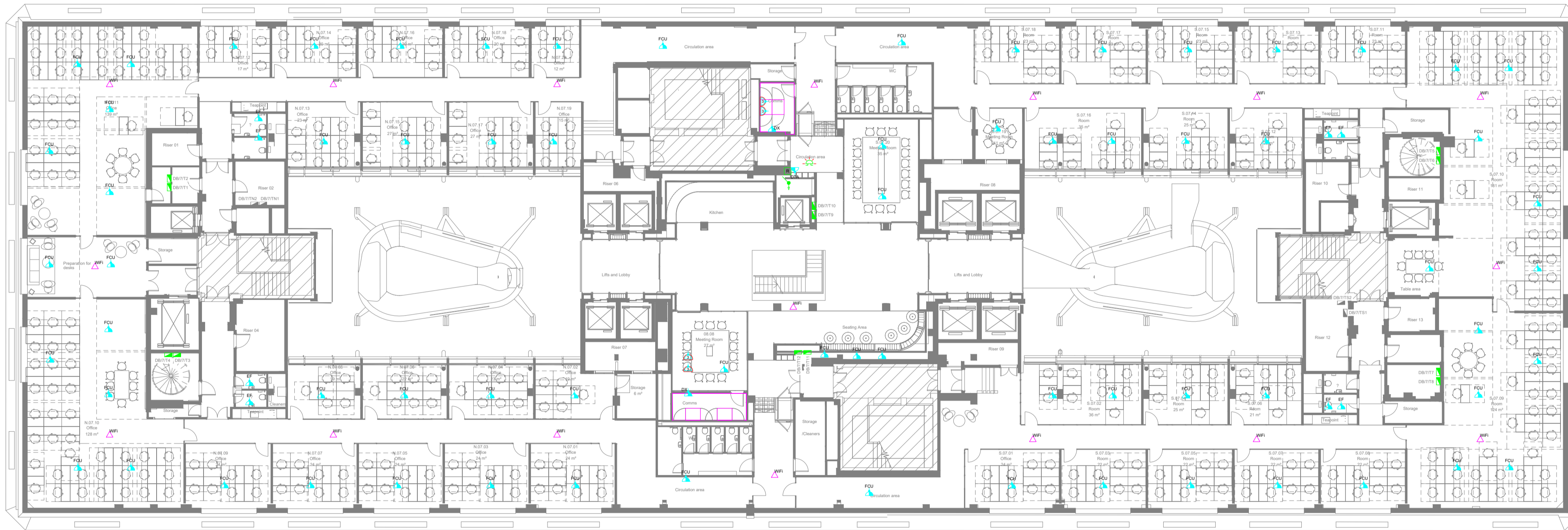


Notes

1. This drawing package is to Developed Design stage as defined in BSRIA BG/6 2018.
2. This drawing package is intended to indicate:
 - 2.1. Approximate locations of horizontal & vertical service runs.
 - 2.2. Sizes and locations of main plant and distribution systems.
 - 2.3. Key principles of systems serving the building through typical room/area details.
3. Sizes, duties and quantities indicated are provisional only and subject to development during Technical Design stage.
4. The final location of the fused connection unit(s) for the AC cassette/ fan coil units shall be local to the unit and standardised. An additional fused connection unit should be allowed per fan coil unit for power to condensate pump (if separate).
5. The proposed MEPH works to these areas are considered to be fit-out installations and are not considered to impact on the Heritage aspects of the work areas of the building.
6. Power and data cabling will be run in the floor void or ceiling void terminating in flush wall outlets or flush floor outlet boxes.
7. Power will be provided to mechanical plant and other ancillary equipment.
8. Ancillary IT equipment such as Wi-Fi outlets will be provided, fixed to the ceiling.
9. Other ancillary electrical equipment may be required. Details to be confirmed.
10. All services installations will need to be supported from the existing structure and fixings will need to be made to the existing slab or steelwork to support interim support systems to support the services installation. This is as per the pre-existing installation.



Legend

- Switched fused connection unit
- FCU - fan coil unit
- DTA - disabled toilet alarm
- DX - comms room air conditioning (direct expansion unit)
- WiFi / Wireless Access Point
- Disabled alarm pull cord
- Disabled alarm reset unit
- Disabled alarm beacon / indicator
- Existing distribution board
- New distribution board

Rev	Date	Description	By	Checked
P1	06/03/2020	Listed Building Application	LB	MB

Architect
HUTCHINSON & PARTNERS

Client
LABTECH

Project
Victoria House Phase 2

Drawing Title
**Electrical Services
Small Power & Ancillaries
Layout High Level
Seventh Floor**



Building Services Engineering | Sustainability | Acoustics
ScotchPartners
137 Farringdon Road
London EC1R 3AD
020 3544 5400
www.scotchpartners.com

Issue	Date	Scale	By	Checked
Stage 3	Jan 20	@ A1	LB	MB

Drawing No. **5228-SP-P2-07-DR-E-410** Rev **P1**