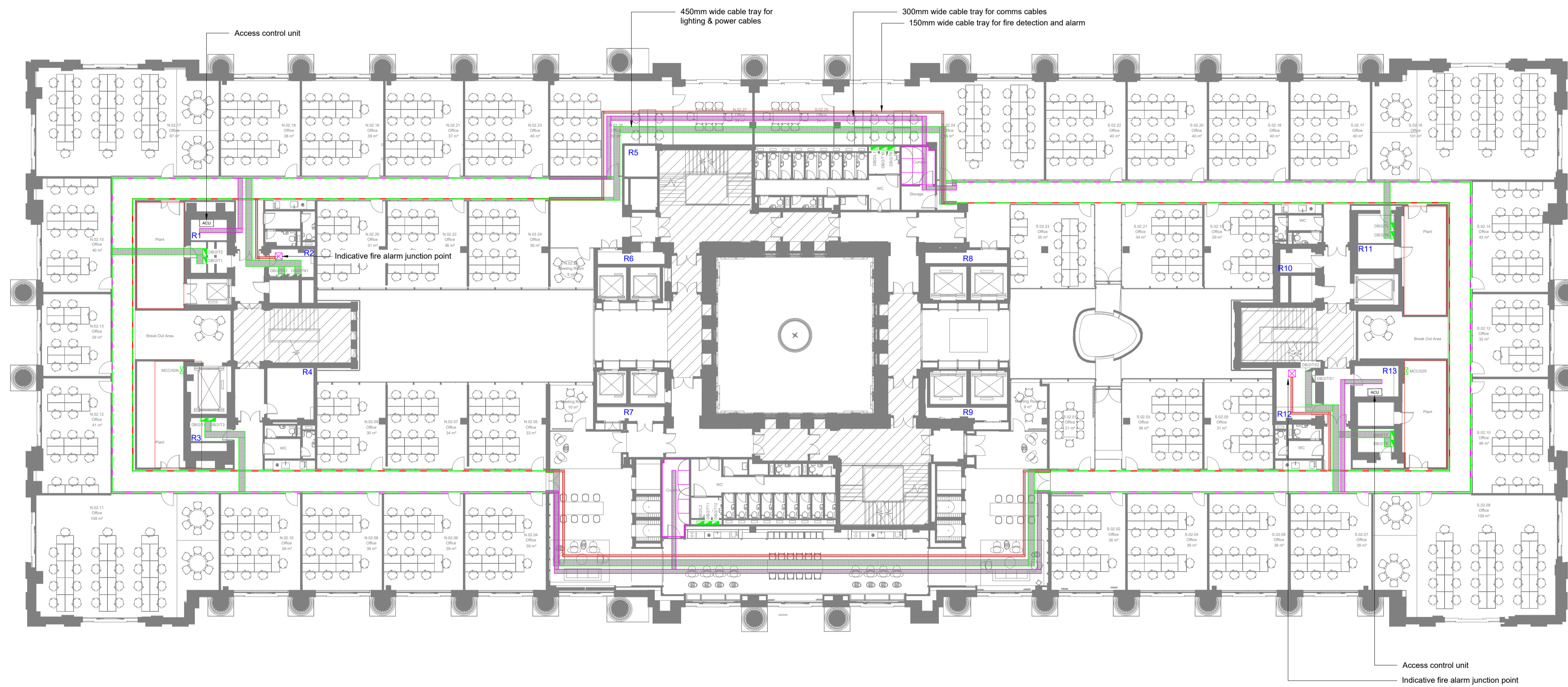


Notes

1. This drawing package is to Developed Design stage as defined in BSRIA BG/6 2018.
2. This drawing package is intended to indicate:
  - 2.1. Approximate locations of horizontal & vertical service runs.
  - 2.2. Sizes and locations of main plant and distribution systems.
  - 2.3. Key principles of systems serving the building through typical room/area details.
3. Sizes, duties and quantities indicated are provisional only and subject to development during Technical Design stage.
4. The proposed MEPH works to these areas are considered to be fit-out installations and are not considered to impact on the Heritage aspects of the work areas of the building.
5. Power and data cabling will be run in the floor void or ceiling void terminating in flush wall outlets or flush floor outlet boxes.
6. Power will be provided to mechanical plant and other ancillary equipment.
7. Ancillary IT equipment such as Wi-Fi outlets will be provided, fixed to the ceiling.
8. Other ancillary electrical equipment may be required. Details to be confirmed.
9. All services installations will need to be supported from the existing structure and fixings will need to be made to the existing slab or steelwork to support interim support systems to support the services installation. This is as per the pre-existing installation.



Legend

- Lighting & Power tray
- Fire detection & alarm tray
- Comms tray
- Lighting & power tray and fire detection & alarm tray mounted in vertical
- Lighting & power tray and comms tray mounted in vertical
- x Fire alarm junction point
- Existing distribution board
- New distribution board
- ACU Existing access control unit

Rev	Date	Description	LB	MB
P1	06/03/2020	Listed Building Application	LB	MB

Architect  
**HUTCHINSON & PARTNERS**

Client  
**LABTECH**

Project  
**Victoria House Phase 2**

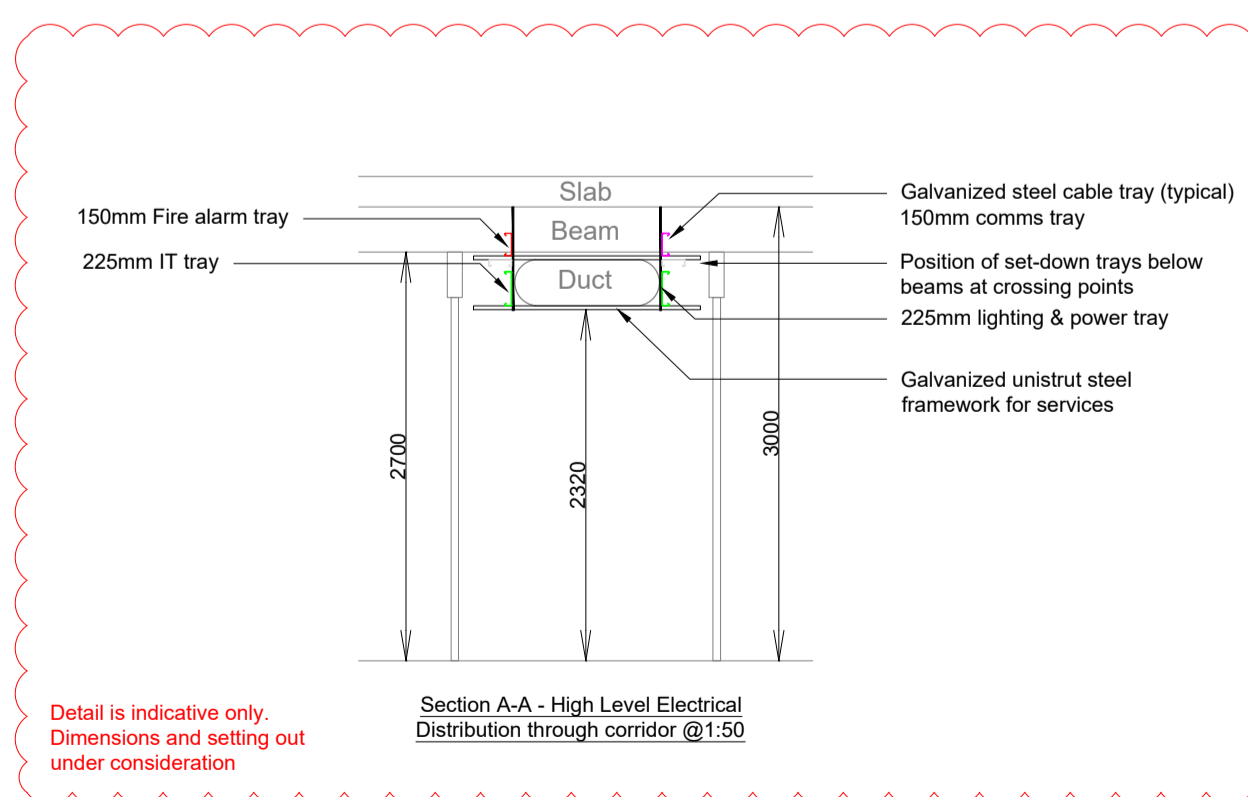
Drawing Title  
**Electrical Services  
Containment  
Layout High Level  
Second Floor**



Building Services Engineering | Sustainability | Acoustics  
ScotchPartners  
137 Farringdon Road  
London EC1R 3AD  
020 3544 5400  
www.scotchpartners.com

Issue	Date	Scale	Stage
1	Jan 20	@ A1	3

Drawn By: LB  
Checked By: MB  
Drawing No.: **5228-SP-P2-02-DR-E-440**  
Rev: **P1**



Detail is indicative only  
Dimensions and setting out  
under consideration