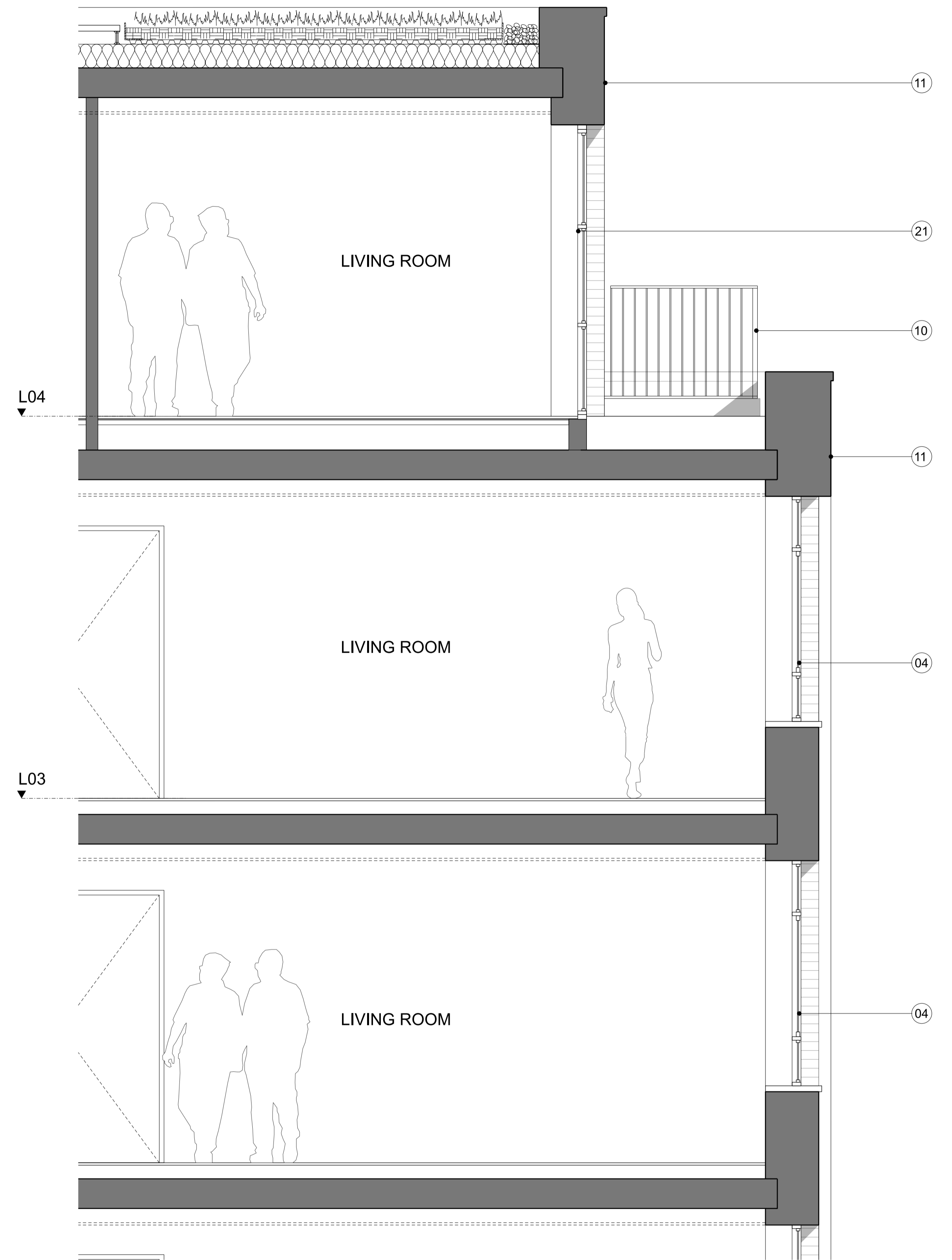




01 BAY ELEVATION: EAST ELEVATION UPPER



02 PARTIAL SECTION

KEY

- |  |   |   |
|--|---|---|
| 01 Existing brick refurbished                  | 08 Full height glazing with bronze colour metal frame | 15 Bifolding doors with metal frame             |
| 02 Fluted concrete/ GRC detailing              | 09 Concrete/ GRC fluted cornice                       | 16 Juliet balcony with painted metal balustrade |
| 03 Ribbed bronze coloured metal header         | 10 Painted metal balustrade                           | 17 Building signage                             |
| 04 Window with bronze colour metal frame       | 11 Pale concrete brick                                | 18 Frosted privacy glass                        |
| 05 Glazed doors with bronze colour metal frame | 12 Louvred metal plant screen                         | 19 Opening vent as part of fire strategy        |
| 06 Vertical concrete/ GRC pillar               | 13 Expressed metal channel                            | 20 Concrete plinth                              |
| 07 Concrete/ GRC detailing                     | 14 Hit and miss brick                                 | 21 Full height glazing                          |
|  |   | 22 Metal louvre                                 |

REV DATE

- |     |          |  |
|-----|----------|--|
| P01 | 21/07/17 | Issue for Planning                               |
| P02 | 30/11/17 | Revised Issue for Planning with amendments       |
| P03 | 02/03/18 | Revised Issue for Planning with amendments       |
| P04 | 25/02/20 | Revised Issue for Planning with minor amendments |

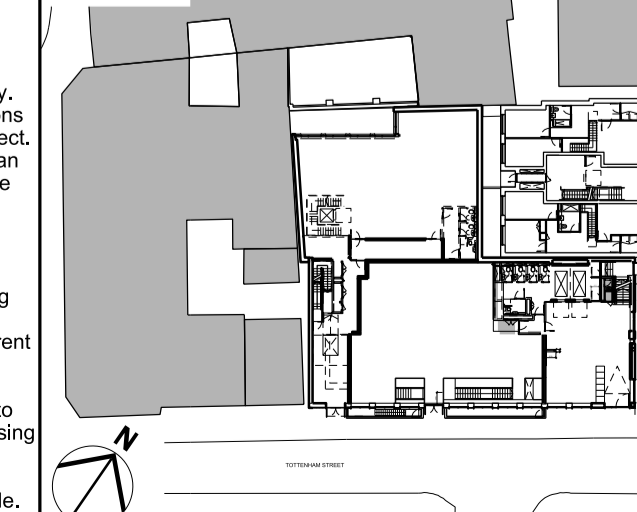
CONSULTANTS

CLIENT:	WESTBROOK PARTNERS/ 1921 Mortimer Investments Limited
STRUCTURAL ENGINEER:	HEYNE TILLET STEEL
MECHANICAL ENGINEER:	THORNTON REYNOLDS
COST CONSULTANT:	LESLIE CLARK
PROJECT MANAGER:	RADCLIFFES CC
FIRE ENGINEER:	AFFINITY FIRE
APPROVED INSPECTOR:	BRCS
PLANNING CONSULTANT:	DP9
DAY LIGHT/ SUNLIGHT:	POINT 2 SURVEYORS
PARTY WALL CONSULTANT:	POINT 2 SURVEYORS
RESIDENTIAL ARCHITECT	COVE BURGESS

NOTE

1. Do not scale from this drawing.  
 2. All dimensions to be checked on site by the contractor and such dimensions to be his responsibility.  
 3. Report all drawing errors, omissions and discrepancies to the architect.  
 4. This document may be issued in an uncontrolled CAD format to enable others to use it as background information to make alterations and/or additions. In that instance the file will be accompanied by a PDF version. It is for those making such alterations and additions to ensure that they make use of current background information.  
 AHMM Ltd accepts no liability for any such alterations or additions to the background information or arising out of changes to background information which occur prior to alterations of additions being made.

LOCATION



ALLFORD HALL MONAGHAN MORRIS

ARCHITECTS Ltd MORELANDS, 5-23 OLD STREET LONDON EC1V 9HL TEL 020 7251 5261 FAX 020 7251 5123 WEB WWW.AHMM.CO.UK			
job title <b>ARTHUR STANLEY HOUSE</b>			
drawing title / location <b>PROPOSED BAY STUDY EAST ELEVATION - RESIDENTIAL UPPER</b>			
drawn by LV	checked GH	scale 1:25@A1; 1:50@A3	status PLANNING
project <b>15068</b>	zone	source	classification <b>(00)_P231 P04</b>