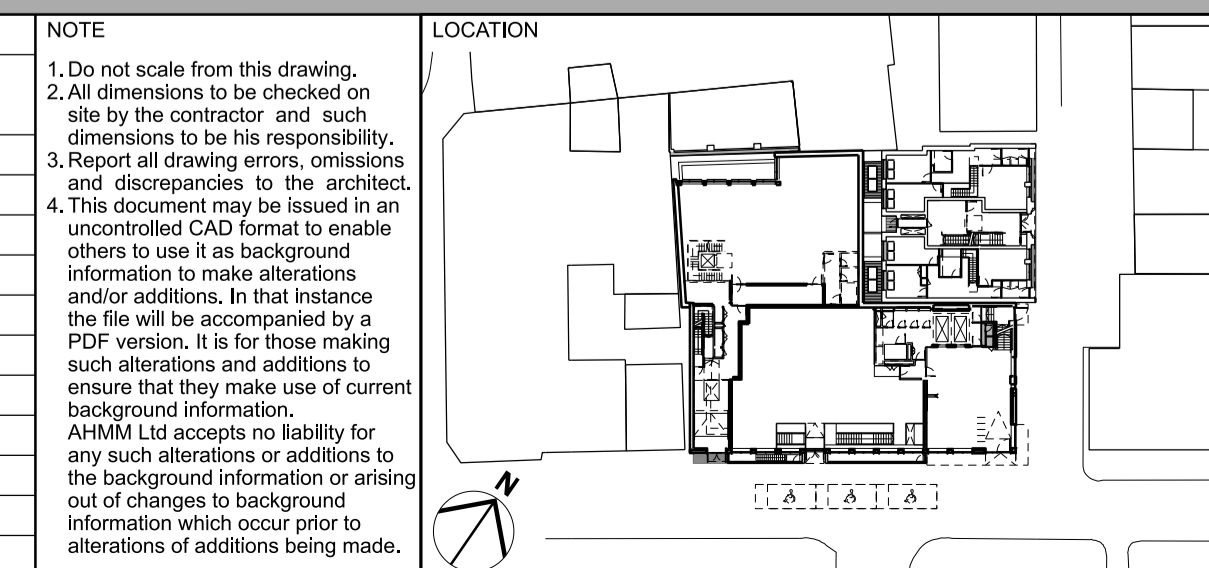


KEY	REV	DATE
	P01	21/07/17 Issue for Planning
	P02	30/11/17 Revised Issue for Planning with amendments
	P03	02/03/18 Revised Issue for Planning with amendments
	P04	25/02/20 Revised Issue for Planning with minor amendments

CONSULTANTS	CLIENT:
STRUCTURAL ENGINEER:	WESTBROOK PARTNERS/ 1921 Mortimer Investments Limited
MECHANICAL ENGINEER:	HEYNE TILLET STEEL
COST CONSULTANT:	THORNTON REYNOLDS
PROJECT MANAGER:	LESLIE CLARK
FIRE ENGINEER:	RADCLIFFES CC
APPROVED INSPECTOR:	AFFINITY FIRE
PLANNING CONSULTANT:	BRCS
DAY LIGHT/ SUNLIGHT:	DP9
PARTY WALL CONSULTANT:	POINT 2 SURVEYORS
RESIDENTIAL ARCHITECT	POINT 2 SURVEYORS
	COVE BURGESS

NOTE
1. Do not scale from this drawing.
2. All dimensions to be checked on site by the contractor and such dimensions to be his responsibility.
3. Report all drawing errors, omissions and discrepancies to the architect.
4. This document may be issued in an uncontrolled CAD format to enable others to use it as background information to make alterations and/or additions. In that instance the file will be accompanied by a PDF version. It is for those making such alterations and additions to ensure that they make use of current background information.
AHMM Ltd accepts no liability for any such alterations or additions to the background information or arising out of changes to background information which occur prior to alterations of additions being made.



ALLFORD HALL MONAGHAN MORRIS					
ARCHITECTS Ltd MORELANDS, 5-23 OLD STREET LONDON EC1V 9HL TEL 020 7251 5261 FAX 020 7251 5123 WEB WWW.AHMM.CO.UK					
job title ARTHUR STANLEY HOUSE					
drawing title / location BASEMENT B2 FLOOR PLAN PROPOSED PLAN					
drawn by LV	checked GH	scale 1:100@A1; 1:200@A3	status PLANNING		
project 15068	zone	source	classification (00)_P098	drawing no.	revision P04