

#### 4.1.4 BAA Brick Slip Example

St Mary at Hill is a completed project by Ben Adams Architects

- Brick slip cladding throughout
- Located in close proximity to listed buildings
- Brick slips wrap around corners
- Deep brick reveals at windows using corner slips





Brick slip example - Leighton Road Residential



Brick slip example - Leighton Road Residential

#### 4.1.5 Other Brick Slip Examples

##### Leighton Road Residential Apartments

- Kentish Town
- On the edge of Kentish Town Conservation Area
- Deep brick reveals at windows
- Brick slip finish and colour in keeping with the local context

##### Furnival Street Apart-Hotel

- City of London
- Within Chancery Lane Conservation Area
- Deep brick reveals at windows
- Variety of brick colours



Brick slip example - Furnival Street Apart-Hotel



Brick slip example - Furnival Street Apart-Hotel

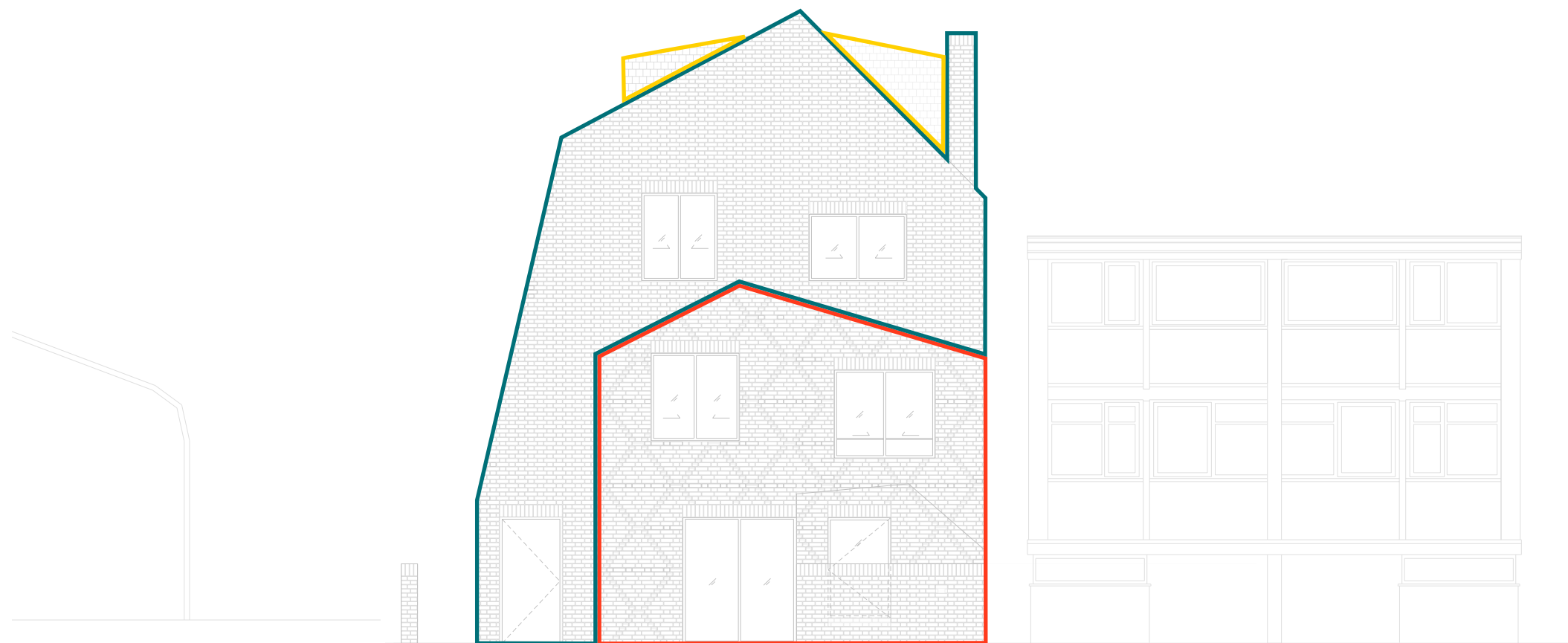


#### 4.1.6 Brick Slip Locations


A combination of facade construction methods are proposed.

- Brick slips
- Traditional brickwork
- Roofing:
  - a) brick
  - b) clay tiles/slate

The following diagrams highlight the locations of the different facade systems.



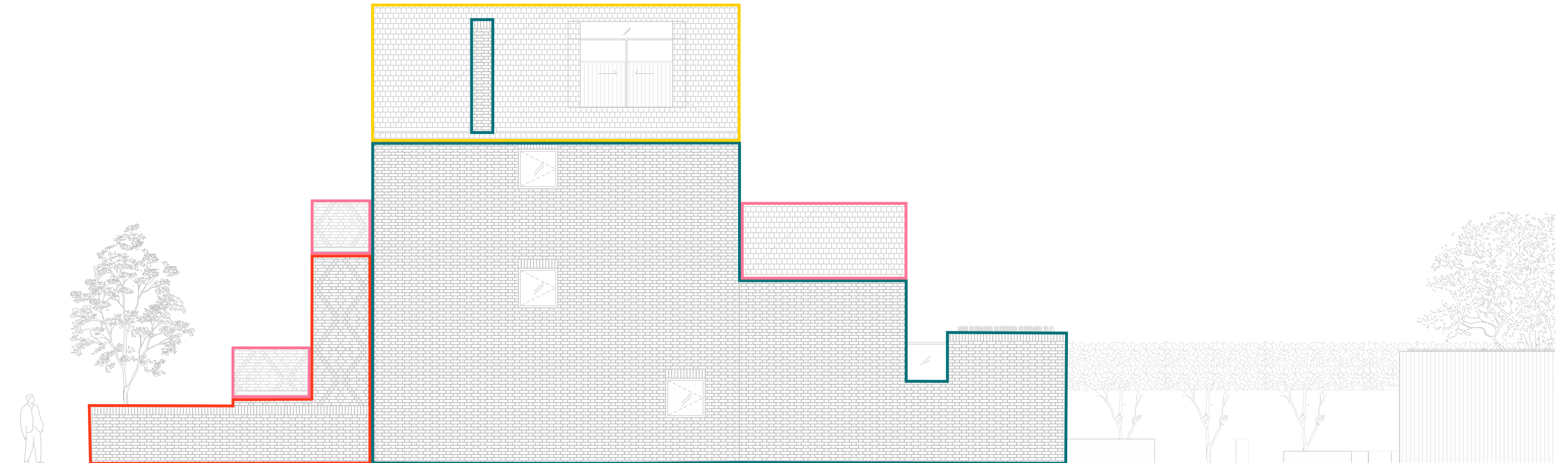
North-east elevation (not to scale)

 Traditional brickwork


 Brick slips

 Slate roof tiles

 Brick roof



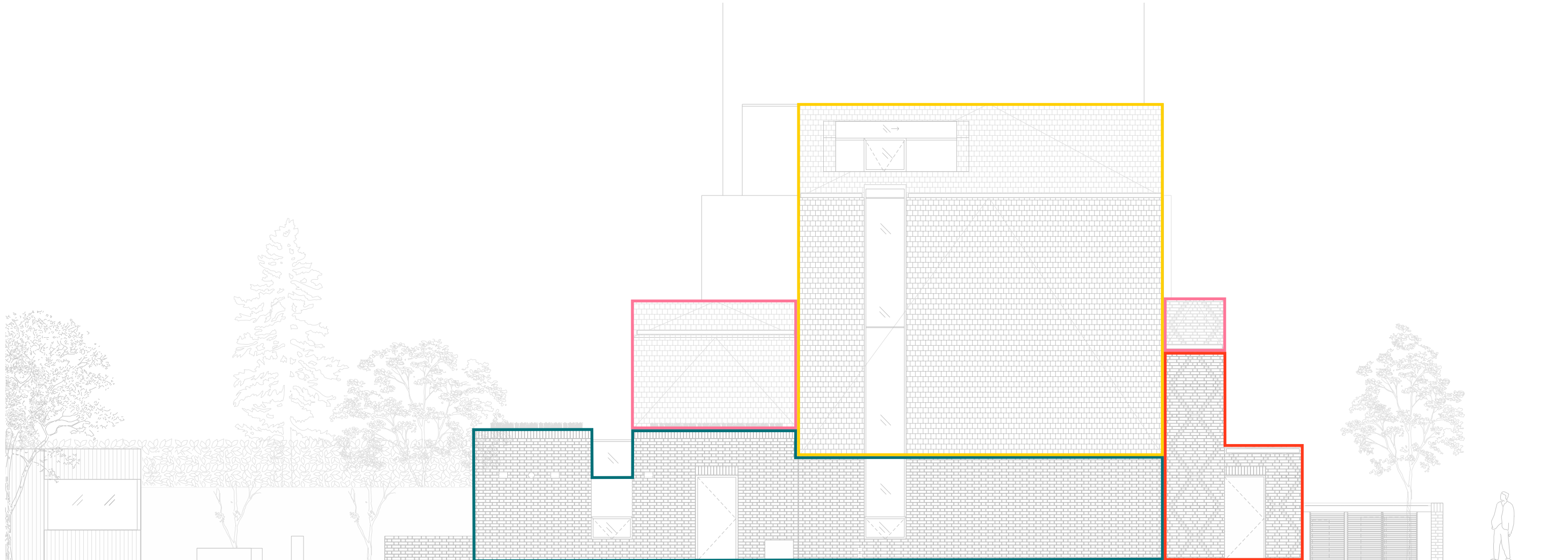
North-west elevation (not to scale)

 Traditional brickwork


 Brick slips

 Slate roof tiles

 Brick roof



South-east elevation (not to scale)

 Traditional brickwork


 Brick slips

 Slate roof tiles

 Brick roof



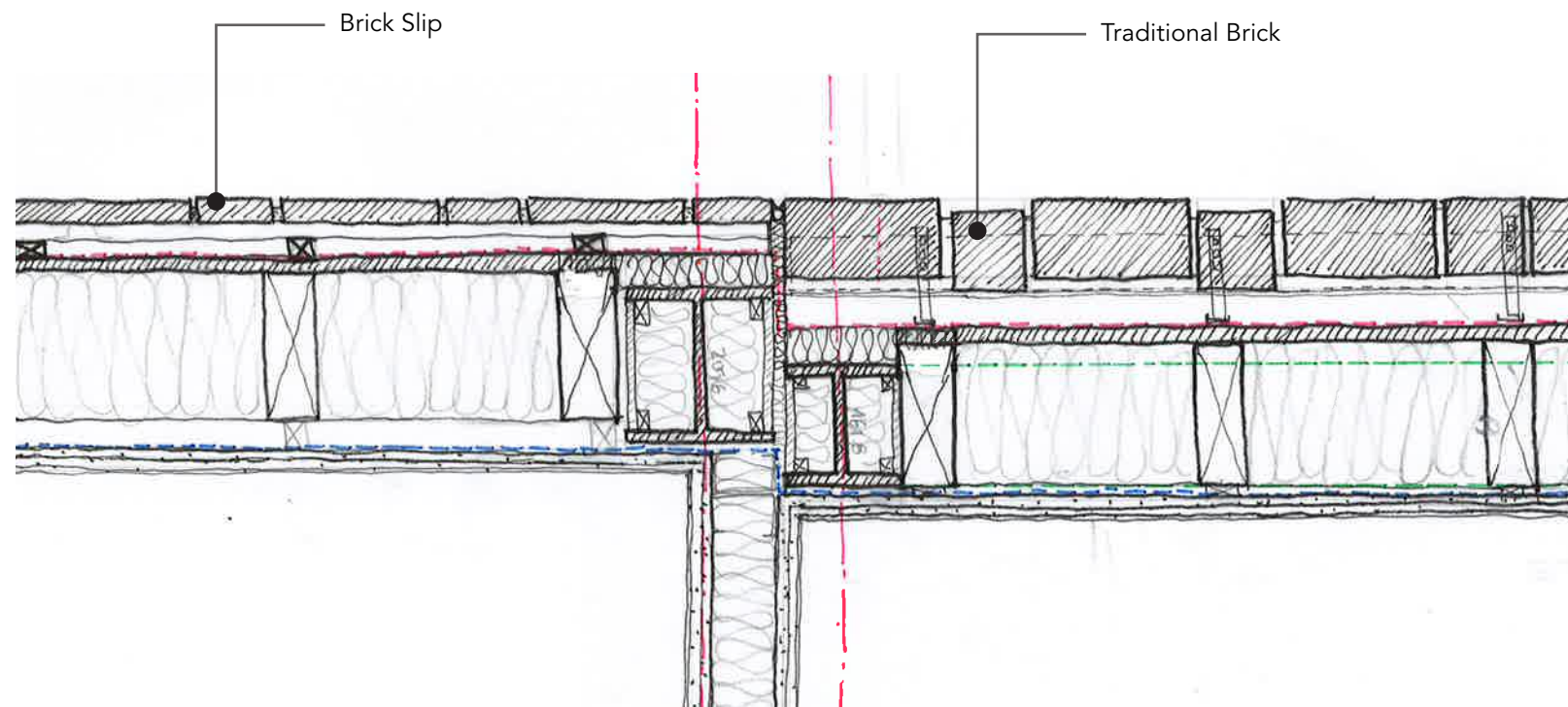
South-west elevation (not to scale)

 Traditional brickwork

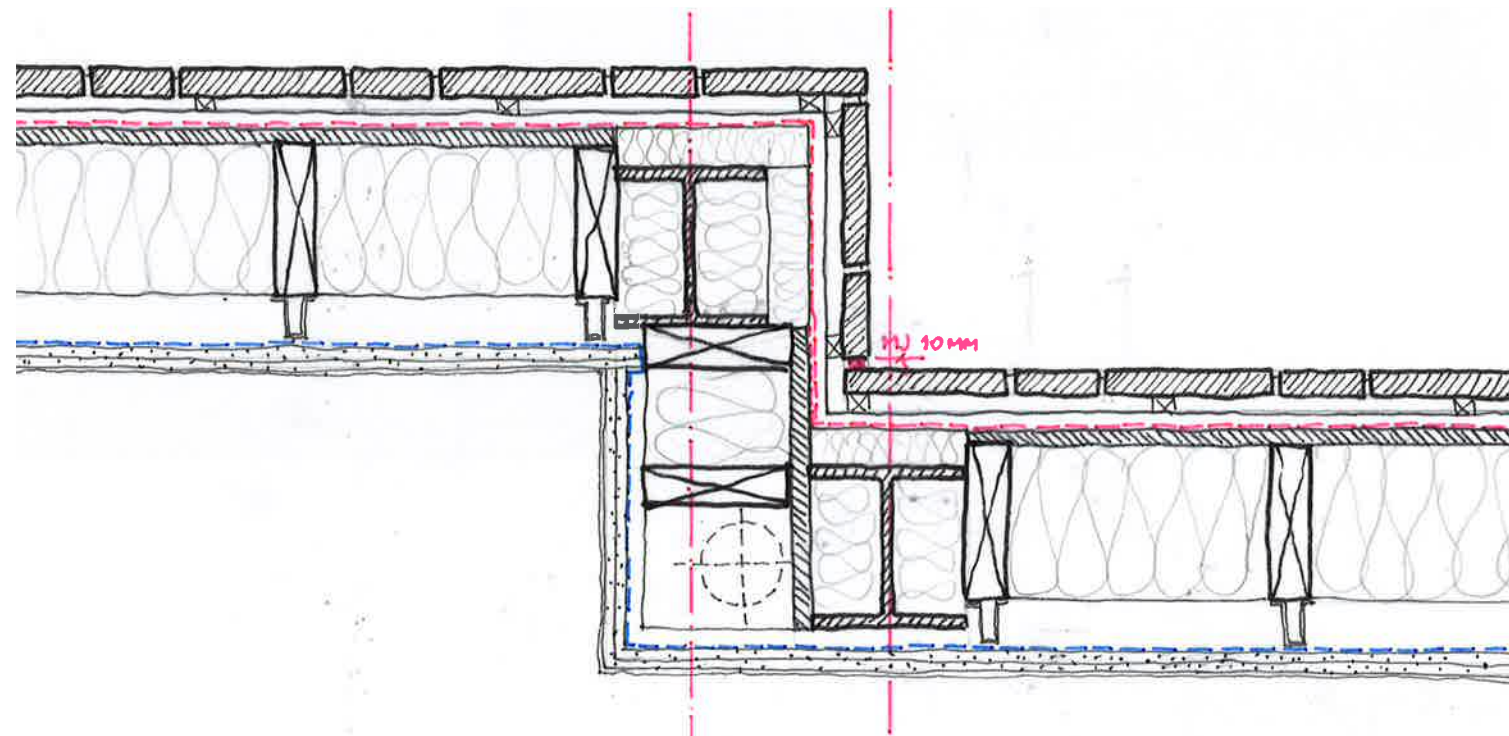
 Brick slips

 Slate roof tiles

 Brick roof



Detail showing change of cladding systems



Detail showing brick slip corner

#### 4.1.7 Brick Cladding Details

The adjacent details show how brick slip junctions will be treated - both at corners and when joining traditional brick.

# Section 5.0

## Garden Room Update





## 5.1 Design Update

The Garden Room is to include a shower room,  
toilet and basin.