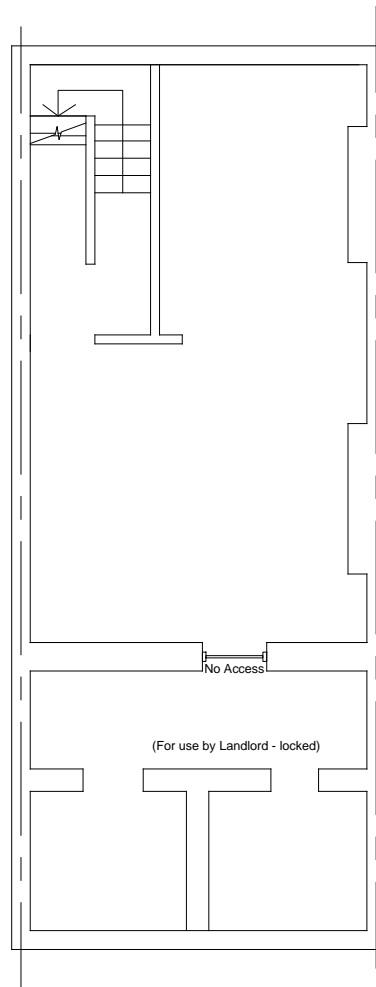
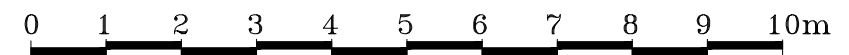


**EXISTING GROUND  
FLOOR PLAN 1:100**



**EXISTING BASEMENT PLAN 1:100**



	Address	Basement of 269 Camden High Street, London NW1 7BX	Scale	1:100@A3	Date	March 2020	<div>Homecraft Design Studios</div> <div>Homecraft Design Studios Group Ltd.</div> <div>3 Pennine Parade, Pennine Drive London, NW2 1NT</div> <div>Mobile: 07801 445580 Email: h768@btinternet.com</div>
	Scheme	Change of use from A1 (retail) to Sui Generis (tattoo parlour)	Drawn by: HS Checked by: Approved by:		Rev.		
	Title	Existing Basement Plan	Drawing No. 202003/269CHS/COS/01				