

EyeKon LED

THORN

96665907 EYE CR LED1350-840 MWS L ANT

LED 16W EYKL_CRLHO4K	EN 55015	IP 65	IK 10		CE		EAC	850 °C	T _a 35	
----------------------	----------	-------	-------	--	----	--	-----	--------	-------------------	--

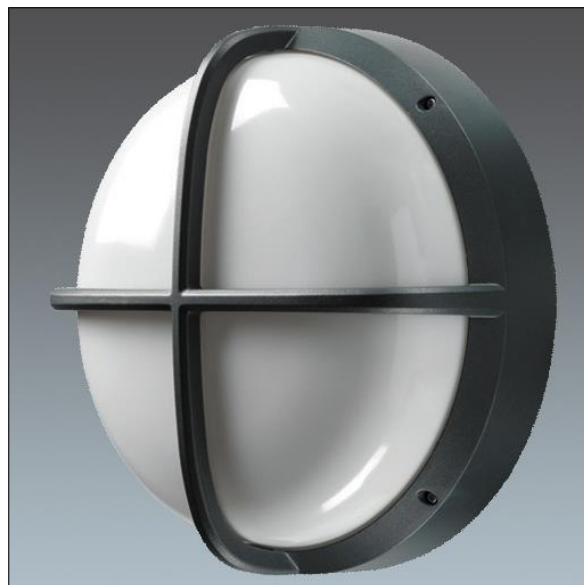
EyeKon LED

Round, impact resistant LED bulkhead luminaire.
Electronic, fixed output control gear. Class I electrical, IP65, IK10. Body: large size, die-cast aluminium (LM6), powder coated anthracite. Diffuser: opal polycarbonate with die-cast aluminium cross feature. Electrical connection via 3 x 2 x 2.5mm² terminal block. With integral motion sensor for on/off control. Complete with 4000K LED

Dimensions: Ø340 x 155 mm

Total power: 16 W

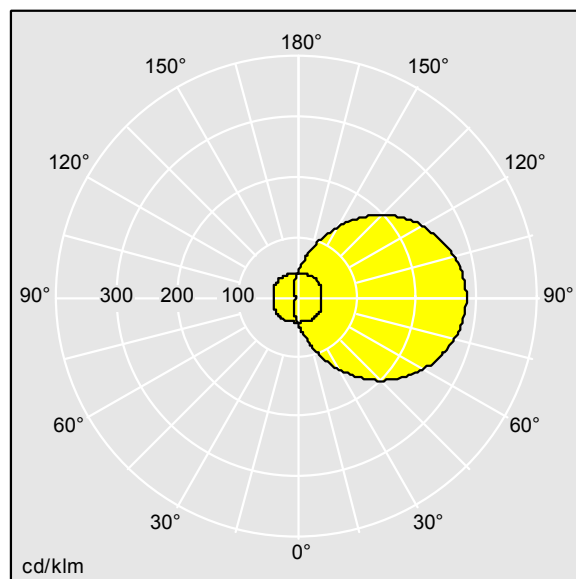
Weight: 3.6 kg



TLG_EYKN_F_LGCRSANTHOP.jpg



TLG_EYKN_M_LGE.wmf



TLG_SP_0042775.ltd

Lamp position: STD - standard

Light Source: LED

Luminaire luminous flux*: 1320 lm

Luminaire efficacy*: 83 lm/W

Lamp efficacy: 82 lm/W

Colour Rendering Index min.: 80

LOR: 1,00 ULOR: 0,50 DLOR: 0,50

Correlated colour temperature*: 4000 Kelvin

Chromaticity tolerance (initial MacAdam)*: 3

Rated median useful life*:

50000h L90 at 25°C

Ballast: 1x EL2 Tridonic LCI

Luminaire input power*: 16 W

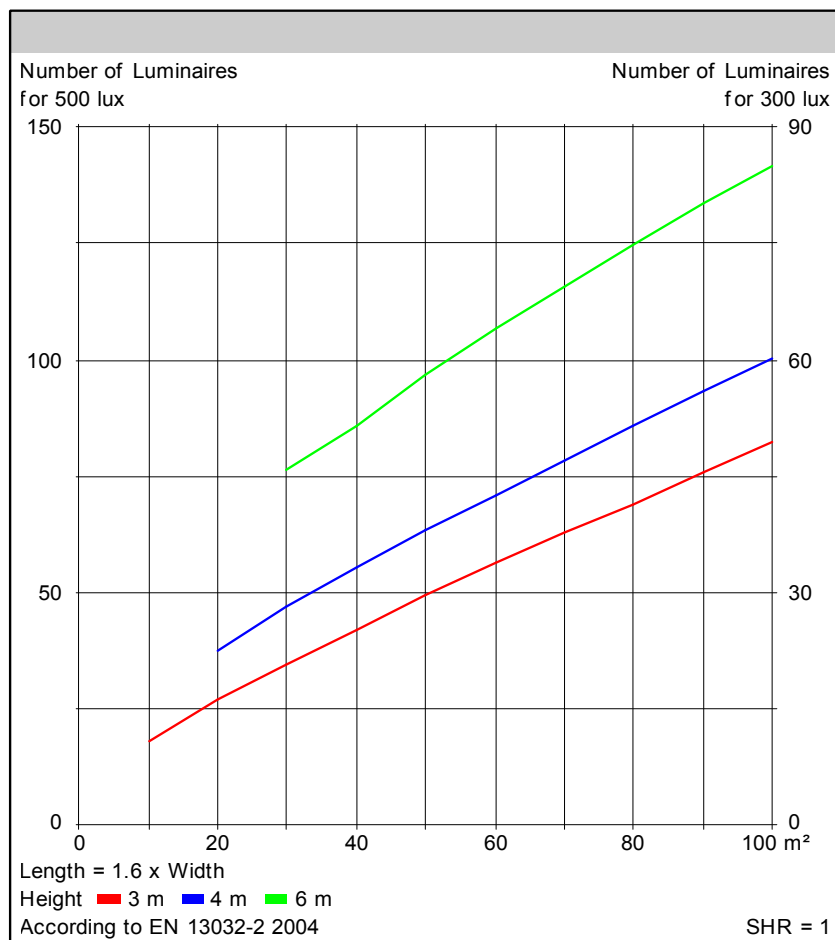
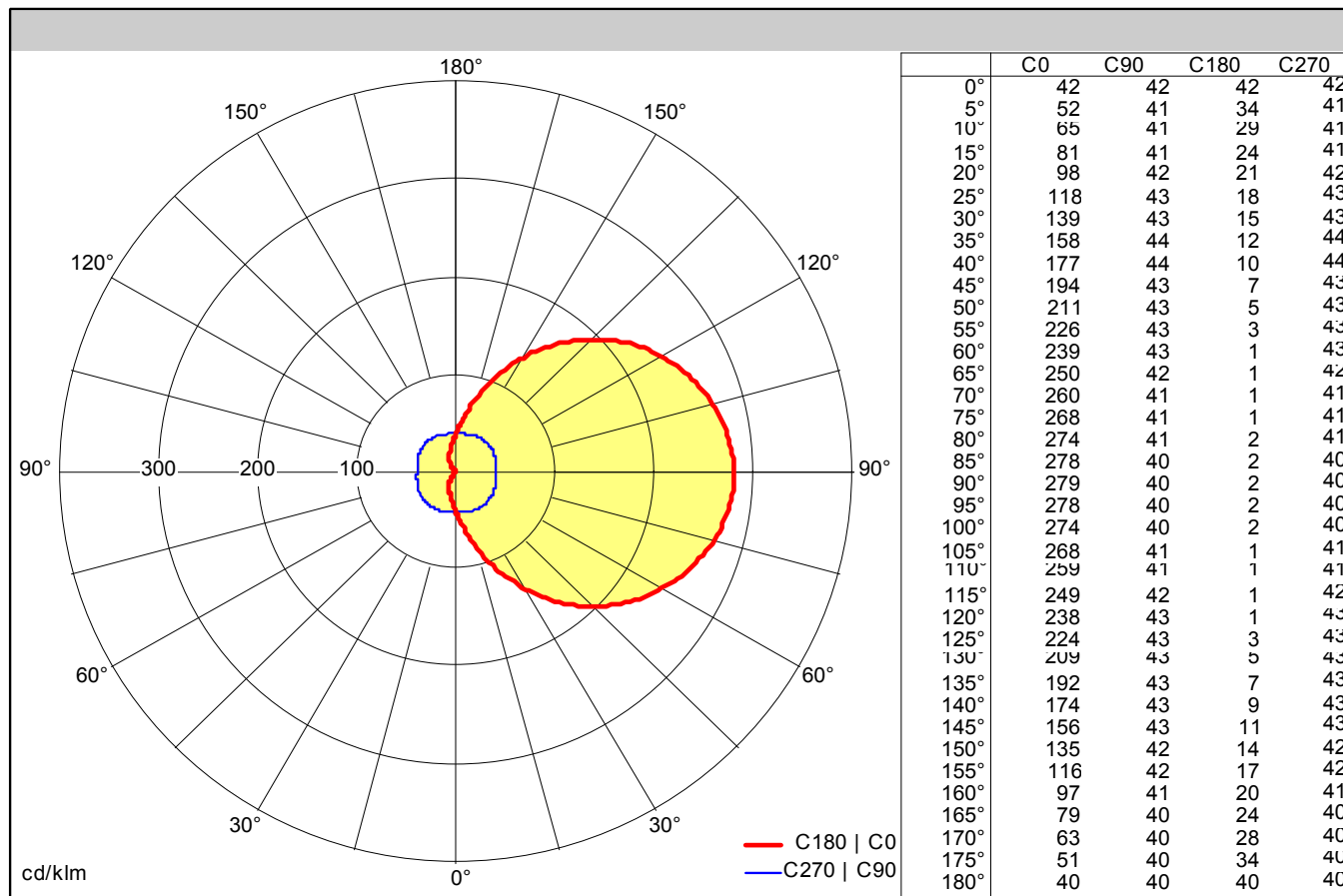
Dimming: FO

All values marked with an * are rated values. Thorn uses tried and tested components from leading suppliers, however there may be isolated instances of technology-related failures of individual LEDs during the rated product lifetime. International standards set the tolerance in initial flux and connected load at $\pm 10\%$. Colour temperature is subject to a tolerance of up to ± 150 Kelvin from the nominal value. Unless stated otherwise, the values apply to an ambient temperature of 25°C.

In most products the failure of one LED point causes no functional impairment to the lighting performance of the luminaire and is therefore no reason for complaint. Unless otherwise stated all Thorn LED products are suitable for unrestricted use (rated RG0 or RG1) with regard photobiological blue light safety (IEC/EN60598-1).

Thorn Lighting is constantly developing and improving its products. The right is reserved to change specifications without prior notification or public announcement.

© Thorn Lighting



Light output ratio

LOR	100 %
ULOR	50 %
DLOR	50 %
FFR	1.00 (50:50)
BLF	1.00

Glare Evaluation

X = 4 H, Y = 8 H	S = 0.25 H
Reflection factors	70/50/20
UGR transversal	<28
UGR axial	<16

Classification

LiTG	C11
EN	
BZ	
UTE	0.50 J + 0.50 T
CIE Flux Codes	18 43 71 50 100

Photometric data file: TLG_SP_0042775.ltd