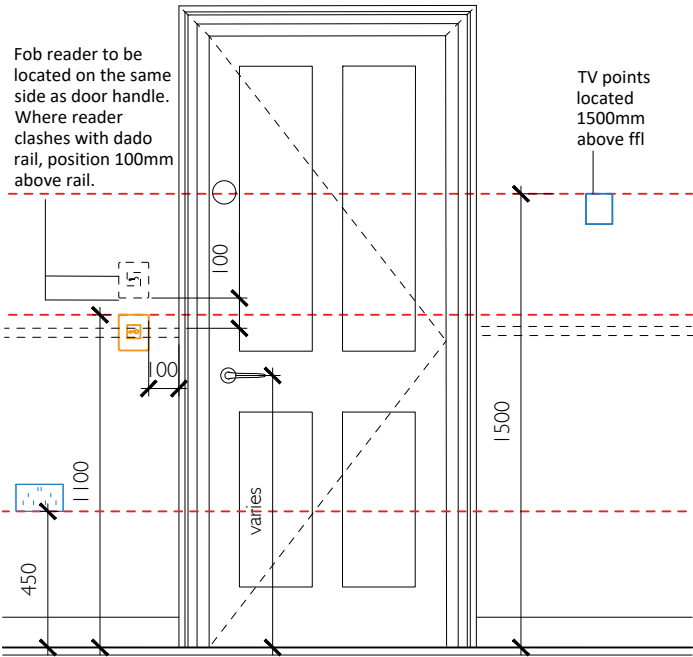


Key:

	Double 13 amp socket outlet
	Double 13 amp socket outlet above counter level
	Fused socket
	Floor box with 3no. double sockets and data
	Floor box with 2no. double sockets and data
	Floor box with double socket and data point for individual office based server.
	Floor box with double socket
	TV point
	Door fob reader
	Electric heat mat



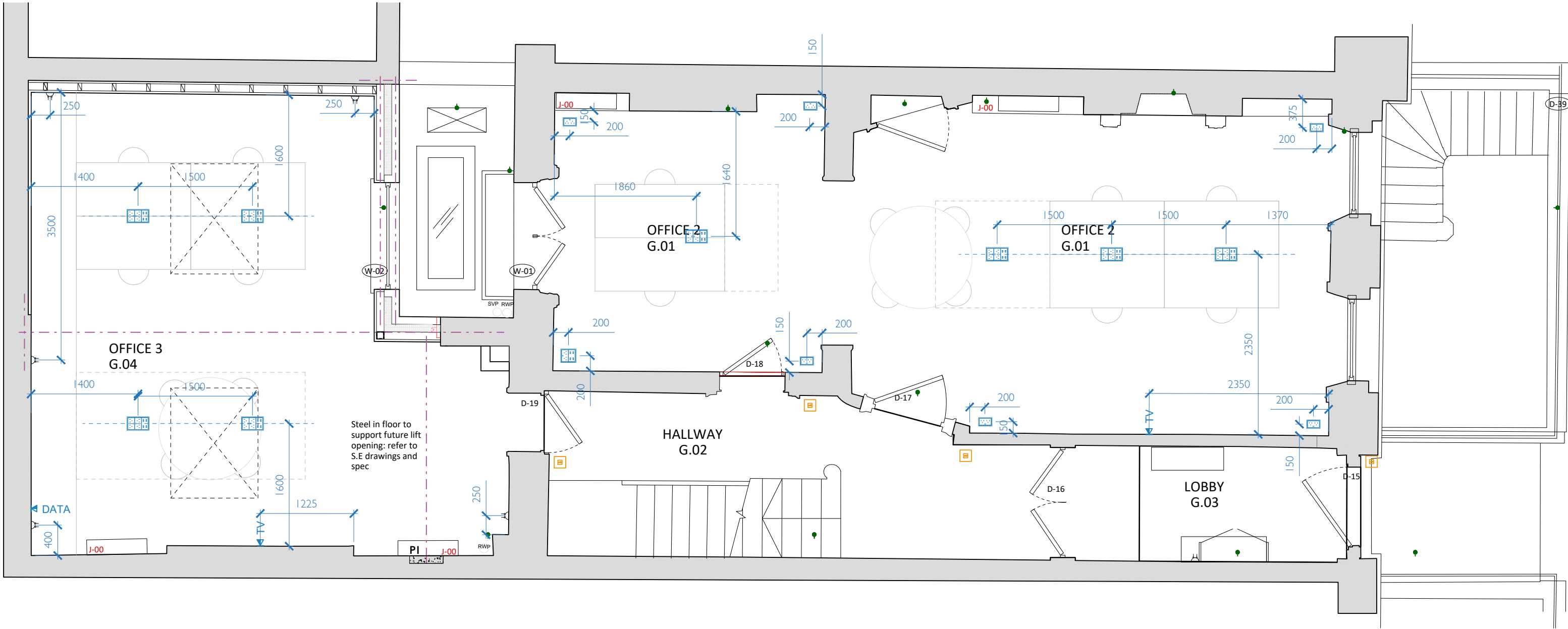
Revisions: Notes: All dimensions in mm.  
A - 14/02/2020 - heat mat / fused spur added

Type  
CONSTRUCTION DRAWING  
Dwg. no. C - 2018.06.800 A

Date: Jan. 2019  
Scale: 1:50@A3  
Drawn/checked: ER / NW  
Client: Fitzroy Square Ltd  
Job title: 28 Fitzroy Square  
Drawing title: LGF Vault Small Power and Data Schematic

NEIL WILSON ARCHITECTS  
37 Montagu Square  
London W1H 2LL  
Office + 44 (0) 20 7723 6630  
Mobile + 44 (0) 7973 657 579  
neil@neilwilsonarchitects.co.uk  
www.neilwilsonarchitects.co.uk



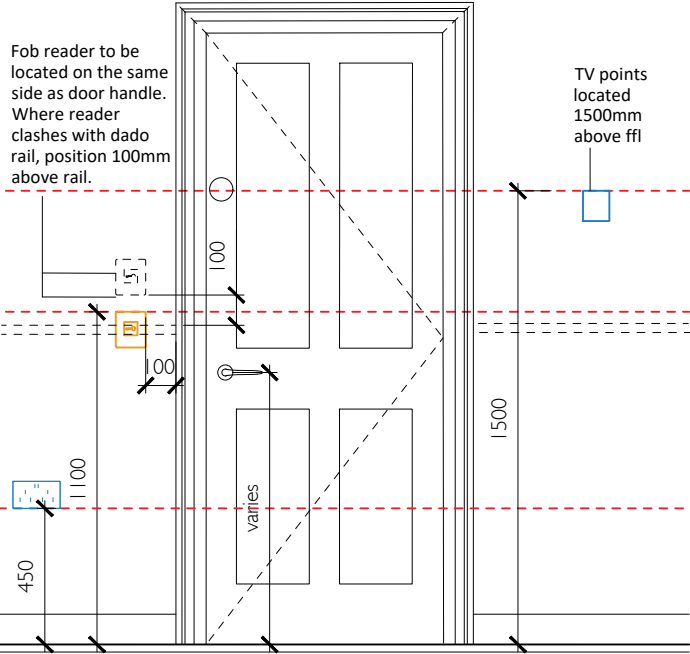


Revisions:  
A - 14/02/2020 - key amended

Notes: All dimensions in mm.

Key:

	Double 13 amp socket outlet
	Double 13 amp socket outlet above counter level
	Fused socket
	Floor box with 3no. double sockets and data
	Floor box with 2no. double sockets and data
	Floor box with double socket and data point for individual office based server.
	Floor box with double socket
	TV point
	Door fob reader
	Electric heat mat



Type  
**CONSTRUCTION DRAWING**  
Dwg. no. **C - 2018.06.802 A**

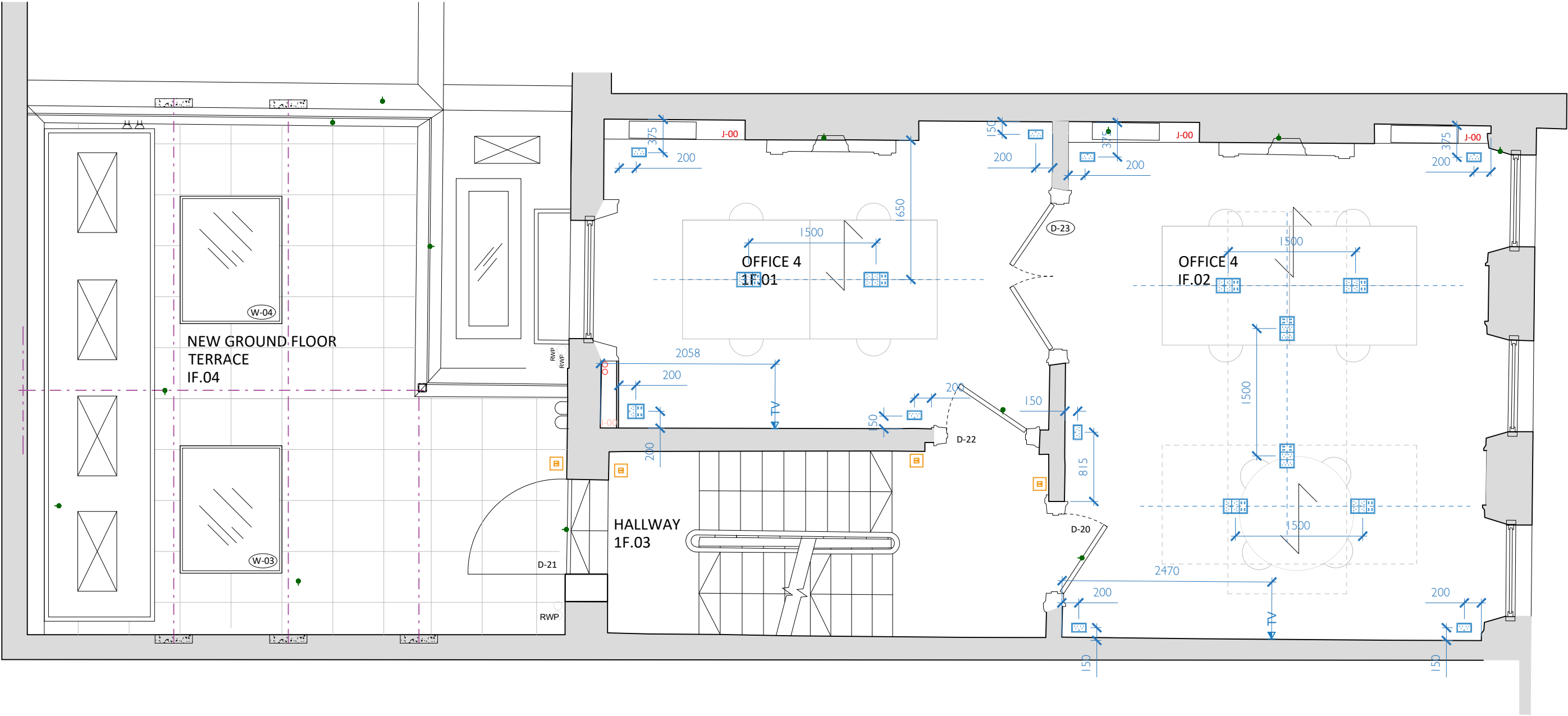
Date: Jan. 2019  
Scale: 1:50@A3  
Drawn/checked: ER / NW  
Client: Fitzroy Square Ltd  
Job title: 28 Fitzroy Square  
Drawing title: GF Small Power and Data Schematic

© Copyright Neil Wilson Architects Limited. Do not scale from this drawing. All dimensions to be checked on site.



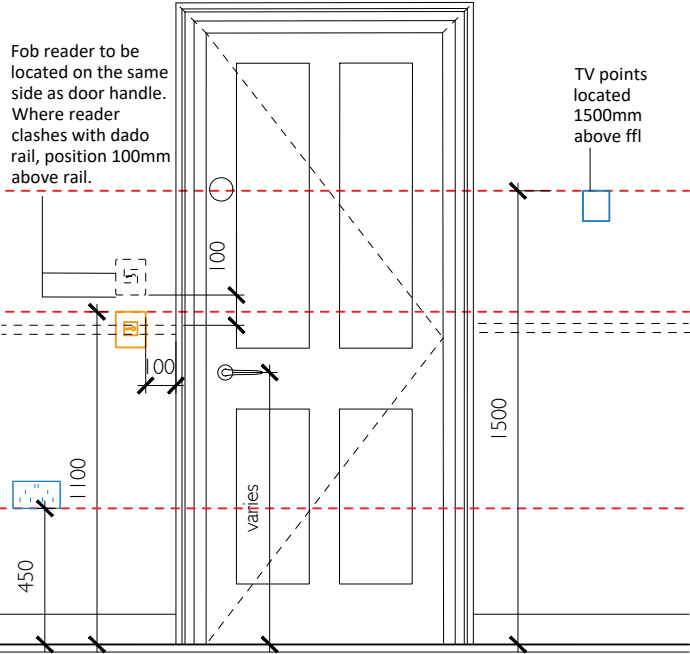
NEIL WILSON ARCHITECTS  
37 Montagu Square  
London W1H 2LL  
Office + 44 (0) 20 7723 6630  
Mobile + 44 (0) 7973 657 579  
neil@neilwilsonarchitects.co.uk

www.neilwilsonarchitects.co.uk



Key:

	Double 13 amp socket outlet
	Double 13 amp socket outlet above counter level
	Fused socket
	Floor box with 3no. double sockets and data
	Floor box with 2no. double sockets and data
	Floor box with double socket and data point for individual office based server.
	Floor box with double socket
	TV point
	Door fob reader
	Electric heat mat



Revisions:

A - 14/02/2020 - key amended

Notes: All dimensions in mm.

Type  
CONSTRUCTION DRAWING

Dwg. no. C - 2018.06.803 A

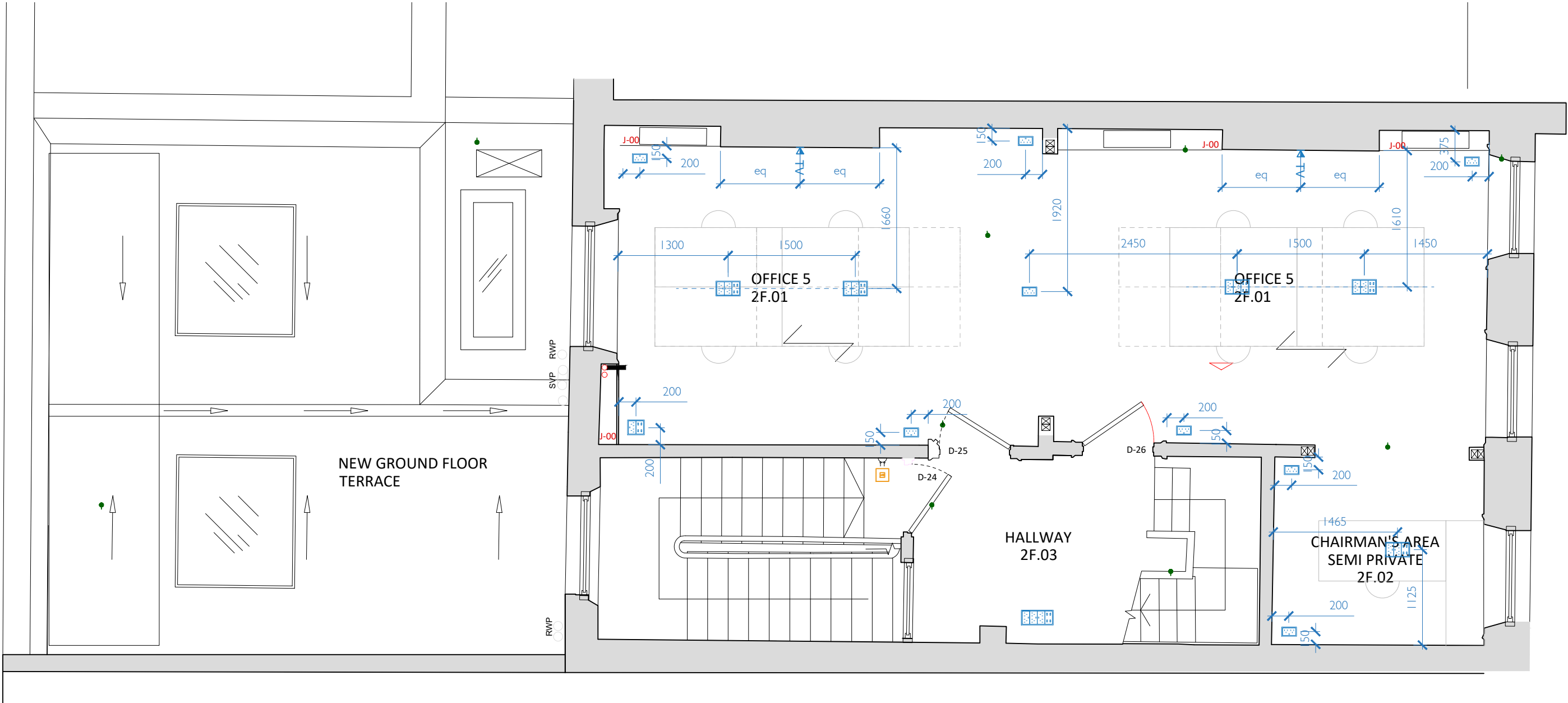
Date: Jan. 2019  
Scale: 1:50@A3  
Drawn/checked: ER / NW  
Client: Fitzroy Square Ltd  
Job title: 28 Fitzroy Square  
Drawing title: IF Small Power and Data Schematic

© Copyright Neil Wilson Architects Limited. Do not scale from this drawing. All dimensions to be checked on site.



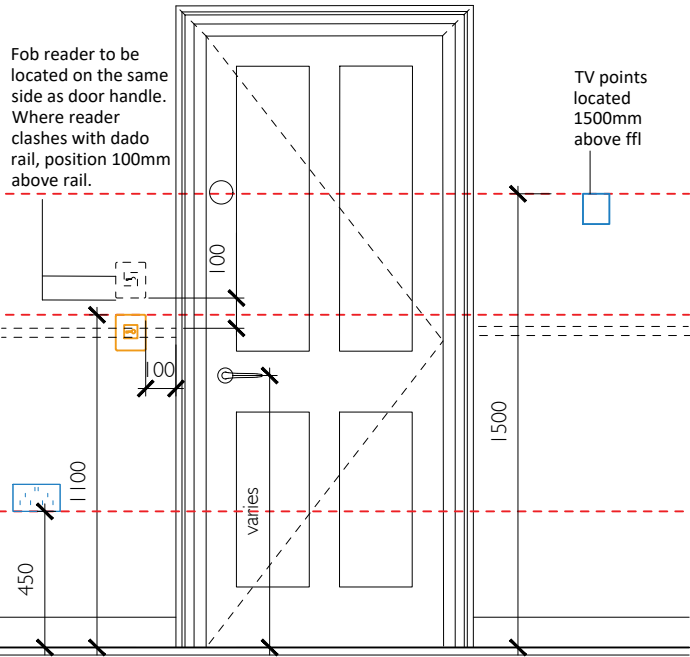
NEIL WILSON ARCHITECTS  
37 Montagu Square  
London W1H 2LL  
Office + 44 (0) 20 7723 6630  
Mobile + 44 (0) 7973 657 579  
neil@neilwilsonarchitects.co.uk

www.neilwilsonarchitects.co.uk



Key:

	Double 13 amp socket outlet
	Double 13 amp socket outlet above counter level
	Fused socket
	Floor box with 3no. double sockets and data
	Floor box with 2no. double sockets and data
	Floor box with double socket and data point for individual office based server.
	Floor box with double socket
	TV point
	Door fob reader
	Electric heat mat



Revisions:  
A - 14/02/2020 - key amended

Notes: All dimensions in mm.

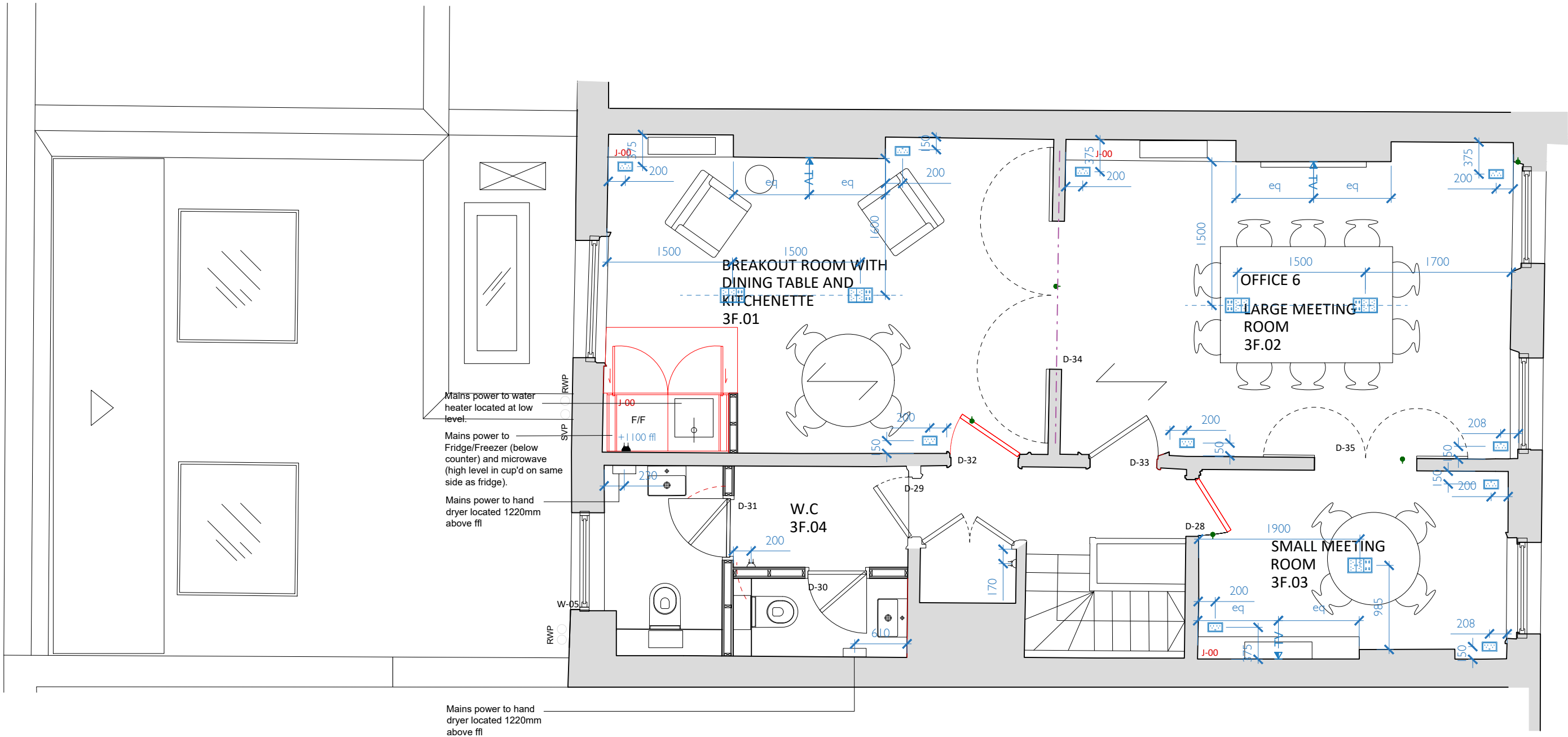
Type  
CONSTRUCTION DRAWING

Dwg. no.  
C - 2018.06.804 A

Date: Jan. 2019  
Scale: 1:50@A3  
Drawn/checked: ER / NW  
Client: Fitzroy Square Ltd  
Job title: 28 Fitzroy Square  
Drawing title: 2F Small Power and Data Schematic

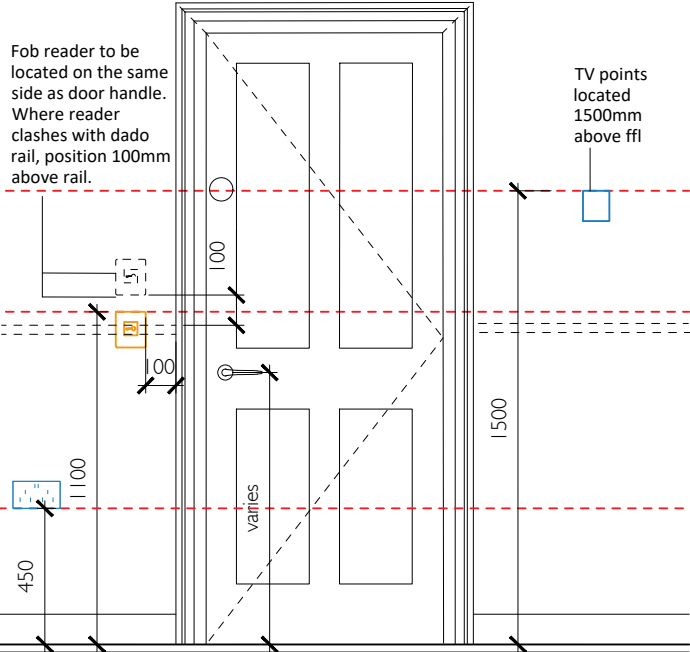
NEIL WILSON ARCHITECTS  
37 Montagu Square  
London W1H 2LL  
Office + 44 (0) 20 7723 6630  
Mobile + 44 (0) 7973 657 579  
neil@neilwilsonarchitects.co.uk  
www.neilwilsonarchitects.co.uk

© Copyright Neil Wilson Architects Limited. Do not scale from this drawing. All dimensions to be checked on site.



Key:

	Double 13 amp socket outlet
	Double 13 amp socket outlet above counter level
	Fused socket
	Floor box with 3no. double sockets and data
	Floor box with 2no. double sockets and data
	Floor box with double socket and data point for individual office based server.
	Floor box with double socket
	TV point
	Door fob reader
	Electric heat mat



Revisions:	Notes: All dimensions in mm.
A 03/02/2020 power: points added to kitchenette	

Type  
CONSTRUCTION DRAWING  
Dwg. no. C - 2018.06.805 A

Date: Jan. 2019  
Scale: 1:50@A3  
Drawn/checked: ER / NW  
Client: Fitzroy Square Ltd  
Job title: 28 Fitzroy Square  
Drawing title: SF Small Power and Data Schematic

© Copyright Neil Wilson Architects Limited. Do not scale from this drawing. All dimensions to be checked on site.

Switches located on same side as handle. Refer to GA's for direction of door swing.

Position of AC controller relative to light switches

The diagram illustrates the placement of electrical controls relative to a door. A vertical dimension line on the left indicates a height of 1200 units. A horizontal dashed red line represents the door handle height. To the left of the door, a light switch is positioned 50 units below the handle line, and an AC controller is positioned 100 units below the handle line. The door itself features a handle, a lock, and two vertical panels. A dashed line indicates the door's swing path. The text 'varies' is written vertically on the lower panel of the door.

Type  
SKETCH

SK - 24

Drawing title: Switch Location

[www.neilwilsonarchitects.co.uk](http://www.neilwilsonarchitects.co.uk)