

LEGEND

- | | | | | |
|--|---|--|--|--|
| 1. ---○--- Recessed track light - FLOS RUNNING MAGNET (allow 120mm recess) | 3. ○ Surface mounted ceiling light FLOS: KAP 80 - Surface Round 2700K - Optic Flood E: Black, I: Gold | 7. □ Decorative Wall light located 1600mm above ffl | 12. ✨ Pendant light fitting. | 17. ✕ Maintained exit box ceiling mounted above door, use existing locations where possible. |
| 2. ---○--- Surface mounted track light FLOS TRACKING MAGNET | 4. ○ Recessed ceiling light FLOS: Easy Kap 80 Fixed 2700K - Optic Flood (B1. White) | 8. □ Decorative Wall light located 1600mm above ffl | 13. — LED LIGHT STRIP IP 57 Colour temperature TBC | 18. □ External wall light |
| | 5. □ Wall light 1700mm above ffl. Sammode - G3 | 9. □ Decorative Wall light located 1600mm above ffl | 14. ○ BASIC UNDERCUPBOARD Surface mounted spotlight Matt white finish | 19. □ External wall light located at low level. TBC on site |
| | 6. □ Decorative Wall light located 1600mm above ffl | 10. □ Decorative Wall light located 1600mm above ffl | 15. ● non maintained emergency luminaire | 20. □ External wall light located at low level. TBC on site |
| | | 11. □ Surface mounted ceiling light | 16. □ Adapted emergency and decorative wall light located 1700mm above ffl | 21. IP SHOWERLIGHT A Recessed bathroom light, IP 54 Matt white finish |

SWITCHES

Switches shown adjacent to be grouped onto single plates with multiple switches where possible.

- | | |
|---------------|-------------------------|
| 1 way switch. | 1 way switch on dimmer. |
| 2 way switch. | 2 way switch on dimmer. |
| 3 way switch. | 3 way switch on dimmer. |

NOTES

All recessed fittings to have smoke hoods to provide 30 mins fire protection.

Supplier to specify appropriate lamp fittings.

Lights in hallway areas to be on a timer with PIR and controls / override in the cup'd next to the front door

Fire Alarm System (refer to contractor plans for details)

- | |
|-----------------------|
| Manual Call Points |
| Smoke Detector |
| Heat Detector |
| Flashing Sound Beacon |

Circuit.

PIR Passive infrared sensor or motion sensor

Revisions:

Notes: All dimensions in mm.

- | |
|---|
| A - 13/01/2020 - fire layer added / lighting amended |
| B - 04/02/2020 - Lighting track amended / various |
| C - 11/02/2020 - Lighting key amended / flashing beacons added WC's |
| D - 14/02/2020 - Lighting amended |
| E - 18/02/2020 - Lighting amended |

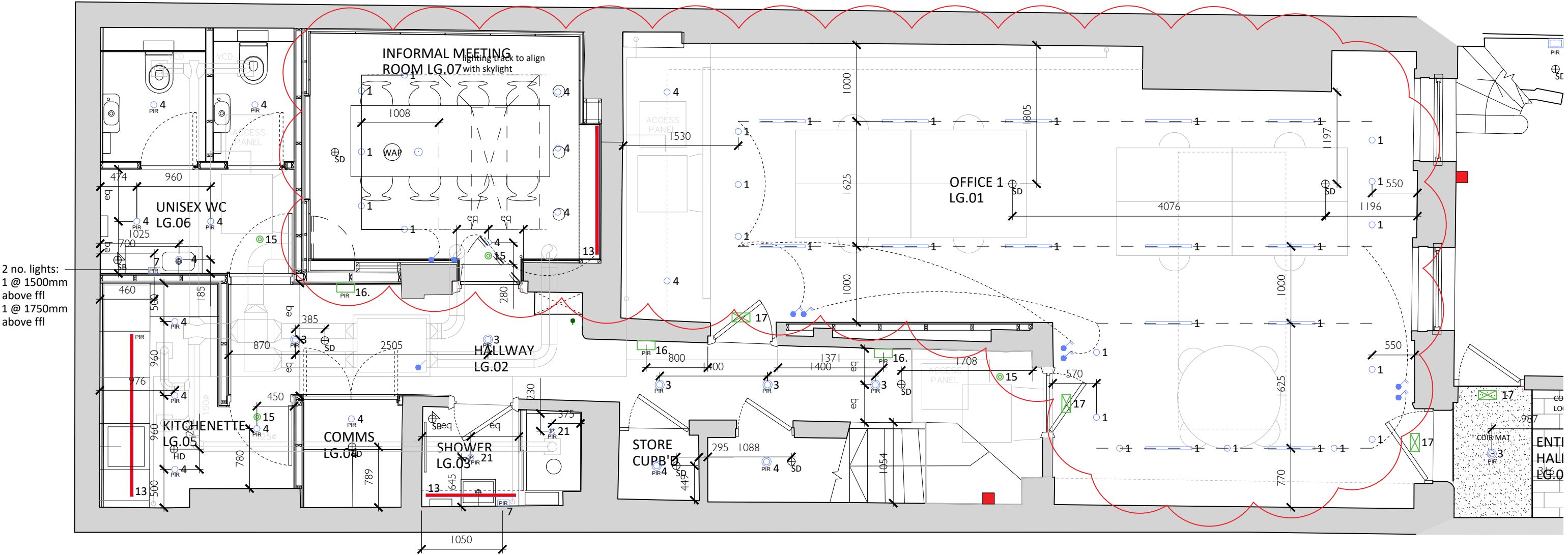
Type
CONSTRUCTION DRAWING

Dwg. no.
C - 2018.06.810 D

Date:	Oct. 2019	NEIL WILSON ARCHITECTS
Scale:	1:50@A3	37 Montagu Square
Drawn/checked:	ER / NW	London W1H 2LL
Client:	Fitzroy Square Ltd	Office + 44 (0) 20 7723 6630
Job title:	Basement Vaults Plan	Mobile + 44 (0) 7973 657 579
Drawing title:	Basement Vaults Plan	neil@neilwilsonarchitects.co.uk
© Copyright Neil Wilson Architects Limited. Do not scale from this drawing. All dimensions to be checked on site.		www.neilwilsonarchitects.co.uk

TRACK LIGHTING UNDER REVIEW BY SUPPLIER

27 Fitzroy
Square



29 Fitzroy
Square

LEGEND

- | | | | | |
|--|---|--|--|--|
| 1. ---○--- Recessed track light - FLOS RUNNING MAGNET (allow 120mm recess) | 3. ○ Surface mounted ceiling light FLOS: KAP 80 - Surface Round 2700K - Optic Flood E: Black, I: Gold | 7. □ Decorative Wall light located 1600mm above ffl | 12. ✨ Pendant light fitting. | 17. ☒ Maintained exit box ceiling mounted above door, use existing locations where possible. |
| 2. ---○--- Surface mounted track light FLOS TRACKING MAGNET | 4. ○ Recessed ceiling light FLOS: Easy Kap 80 Fixed 2700K - Optic Flood (B1. White) | 8. □ Decorative Wall light located 1600mm above ffl | 13. — LED LIGHT STRIP IP 57 Colour temperature TBC | 18. □ External wall light |
| | 5. □ Wall light 1700mm above ffl. Sammode - G3 | 9. □ Decorative Wall light located 1600mm above ffl | 14. ○ BASIC UNDERCUPBOARD Surface mounted spotlight Matt white finish | 19. □ External wall light located at low level. TBC on site |
| | 6. □ Decorative Wall light located 1600mm above ffl | 10. □ Decorative Wall light located 1600mm above ffl | 15. ● non maintained emergency luminaire | 20. □ External wall light located at low level. TBC on site |
| | | 11. □ Surface mounted ceiling light | 16. □ Adapted emergency and decorative wall light located 1700mm above ffl | 21. IP SHOWERLIGHT A Recessed bathroom light, IP 54 Matt white finish |

SWITCHES

Switches shown adjacent to be grouped onto single plates with multiple switches where possible.

- | | |
|---------------|-------------------------|
| 1 way switch. | 1 way switch on dimmer. |
| 2 way switch. | 2 way switch on dimmer. |
| 3 way switch. | 3 way switch on dimmer. |

NOTES

All recessed fittings to have smoke hoods to provide 30 mins fire protection.

Supplier to specify appropriate lamp fittings.

Lights in hallway areas to be on a timer with PIR and controls / override in the cup'd next to the front door

Fire Alarm System (refer to contractor plans for details)

- | | |
|------|-----------------------|
| ■ | Manual Call Points |
| ⊕ SD | Smoke Detector |
| ⊕ HD | Heat Detector |
| ⊕ SB | Flashing Sound Beacon |

Circuit.

PIR Passive infrared sensor or motion sensor

Revisions:

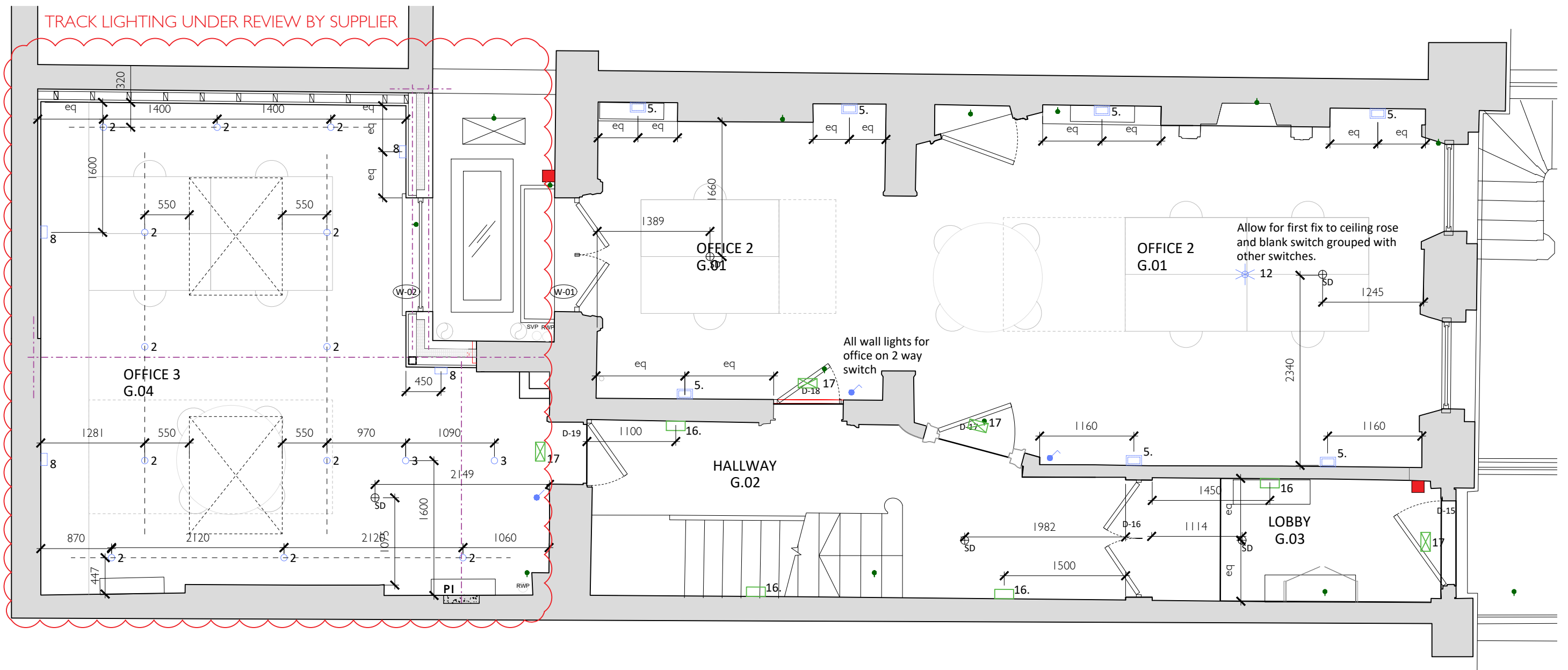
- A - 13/01/2020 - fire layer added / lighting amended
B - 04/02/2020 - Lighting track amended / various
C - 11/02/2020 - Lighting key amended / flashing beacons added WC's
D - 14/02/2020 - Lighting amended

Notes: All dimensions in mm.

Type
CONSTRUCTION DRAWING

Dwg. no. C - 2018.06.81 | D

Date:	Oct. 2019	NEIL WILSON ARCHITECTS 37 Montagu Square London W1H 2LL Office + 44 (0) 20 7723 6630 Mobile + 44 (0) 7973 657 579 neil@neilwilsonarchitects.co.uk www.neilwilsonarchitects.co.uk
Scale:	1:50@A3	
Drawn/checked:	ER / NW	
Client:	Fitzroy Square Ltd	
Job title:	Basement Plan	
Drawing title:	28 Fitzroy Square	
© Copyright Neil Wilson Architects Limited. Do not scale from this drawing. All dimensions to be checked on site.		



LEGEND

- | | | | | |
|--|---|--|---|--|
| 1. ---○--- Recessed track light - FLOS RUNNING MAGNET (allow 120mm recess) | 3. ---○--- Surface mounted ceiling light FLOS: KAP 80 - Surface Round 2700K - Optic Flood E: Black, I: Gold | 7. □ Decorative Wall light located 1600mm above ffl | 12. ✨ Pendant light fitting. | 17. ☒ Maintained exit box ceiling mounted above door, use existing locations where possible. |
| 2. ---○--- Surface mounted track light FLOS TRACKING MAGNET | 4. ○ Recessed ceiling light FLOS: Easy Kap 80 Fixed 2700K - Optic Flood (B1. White) | 8. □ Decorative Wall light located 1600mm above ffl | 13. — LED LIGHT STRIP IP 57 Colour temperature TBC | 18. □ External wall light |
| | 5. □ Wall light 1700mm above ffl. Sammode - G3 | 9. □ Decorative Wall light located 1600mm above ffl | 14. ○ BASIC UNDERCUPBOARD Surface mounted spotlight Matt white finish | 19. □ External wall light located at low level. TBC on site |
| | 6. □ Decorative Wall light located 1600mm above ffl | 10. □ Decorative Wall light located 1600mm above ffl | 15. ● non maintained emergency luminaire | 20. □ External wall light located at low level. TBC on site |
| | 11. □ Surface mounted ceiling light | 16. □ Adapted emergency and decorative wall light located 1700mm above ffl | 21. IP SHOWERLIGHT A Recessed bathroom light, IP 54 Matt white finish | |

SWITCHES

Switches shown adjacent to be grouped onto single plates with multiple switches where possible.

- | | |
|---------------|-------------------------|
| 1 way switch. | 1 way switch on dimmer. |
| 2 way switch. | 2 way switch on dimmer. |
| 3 way switch. | 3 way switch on dimmer. |

NOTES

All recessed fittings to have smoke hoods to provide 30 mins fire protection.

Supplier to specify appropriate lamp fittings.

Lights in hallway areas to be on a timer with PIR and controls / override in the cup'd next to the front door

Fire Alarm System (refer to contractor plans for details)

- | | |
|----|-----------------------|
| ■ | Manual Call Points |
| SD | Smoke Detector |
| HD | Heat Detector |
| SB | Flashing Sound Beacon |

PIR

Passive infrared sensor or motion sensor

Revisions: Notes: All dimensions in mm.

- | |
|---|
| A - 13/01/2020 - fire layer added / lighting amended |
| B - 04/02/2020 - Lighting track amended / various |
| C - 11/02/2020 - Lighting key amended / flashing beacons added WC's |
| D - 14/02/2020 - Lighting amended |

CONSTRUCTION DRAWING

Dwg. no. C - 2018.06.812 D

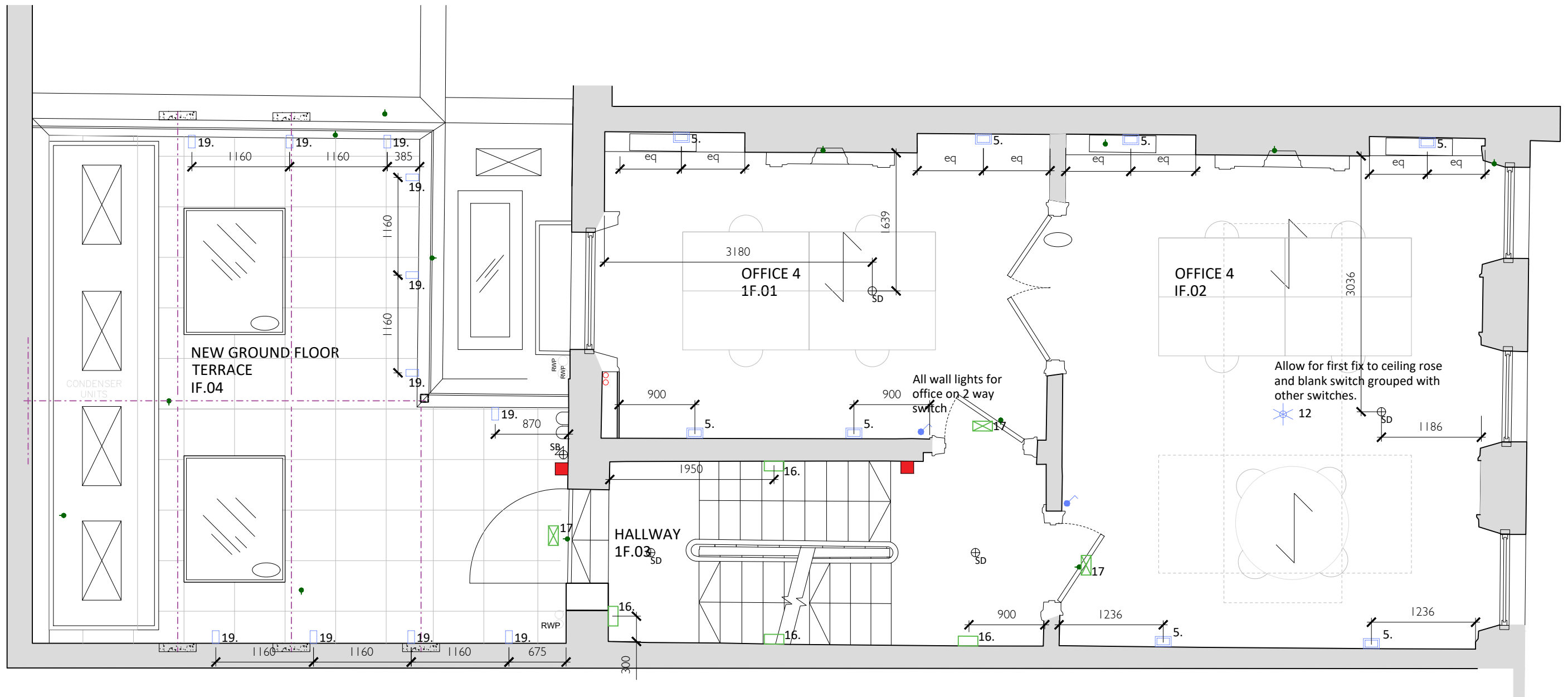
Date:	Oct. 2019
Scale:	1:50@A3
Drawn/checked:	ER / NW
Client:	Fitzroy Square Ltd
Job title:	28 Fitzroy Square
Drawing title:	Ground Floor Plan

© Copyright Neil Wilson Architects Limited. Do not scale from this drawing. All dimensions to be checked on site.



NEIL WILSON ARCHITECTS
37 Montagu Square
London W1H 2LL
Office + 44 (0) 20 7723 6630
Mobile + 44 (0) 7973 657 579
neil@neilwilsonarchitects.co.uk

www.neilwilsonarchitects.co.uk



LEGEND

1. ---○--- Recessed track light - FLOS RUNNING MAGNET (allow 120mm recess)

2. ---○--- Surface mounted track light FLOS TRACKING MAGNET

3. ---○--- Surface mounted ceiling light FLOS: KAP 80 - Surface Round 2700K - Optic Flood E: Black, I: Gold

4. ---○--- Recessed ceiling light FLOS: Easy Kap 80 Fixed 2700K - Optic Flood (B1. White)

5. ---□--- Wall light 1700mm above ffl. Sammode - G3

6. ---□--- Decorative Wall light located 1600mm above ffl

7. ---□--- Decorative Wall light located 1600mm above ffl

8. ---□--- Decorative Wall light located 1600mm above ffl

9. ---□--- Decorative Wall light located 1600mm above ffl

10. ---□--- Decorative Wall light located 1600mm above ffl

11. ---□--- Surface mounted ceiling light

12. ---★--- Pendant light fitting.

13. ---■--- LED LIGHT STRIP I P 57 Colour temperature TBC

14. ---○--- BASIC UNDERCUPBOARD Surface mounted spotlight Matt white finish

15. ---●--- non maintained emergency luminaire

16. ---□--- Adapted emergency and decorative wall light located 1700mm above ffl

17. ---□--- Maintained exit box ceiling mounted above door, use existing locations where possible.

18. ---□--- External wall light

19. ---□--- External wall light located at low level. TBC on site

20. ---□--- External wall light located at low level. TBC on site

21. ---IP--- SHOWERLIGHT A Recessed bathroom light, IP 54 Matt white finish

SWITCHES

Switches shown adjacent to be grouped onto single plates with multiple switches where possible.

- 1 way switch.

2 way switch.

3 way switch.

1 way switch on dimmer.

2 way switch on dimmer.

3 way switch on dimmer.

NOTES

All recessed fittings to have smoke hoods to provide 30 mins fire protection.

Supplier to specify appropriate lamp fittings.

Lights in hallway areas to be on a timer with PIR and controls / override in the cup'd next to the front door

Fire Alarm System (refer to contractor plans for details)

- Manual Call Points

Smoke Detector

Heat Detector

Flashing Sound Beacon

Circuit.

PIR Passive infrared sensor or motion sensor

Revisions: Notes: All dimensions in mm.

- A - 13/01/2020 - fire layer added / lighting amended

B - 04/02/2020 - Lighting track amended / various

C - 11/02/2020 - Lighting key amended / flashing beacons added WC's

D - 14/02/2020 - Lighting amended

Type
CONSTRUCTION DRAWING

Dwg. no.
C - 2018.06.813 D

Date: Oct. 2019

Scale: 1:50@A3

Drawn/checked: ER / NW

Client: Fitzroy Square Ltd

Job title: 28 Fitzroy Square

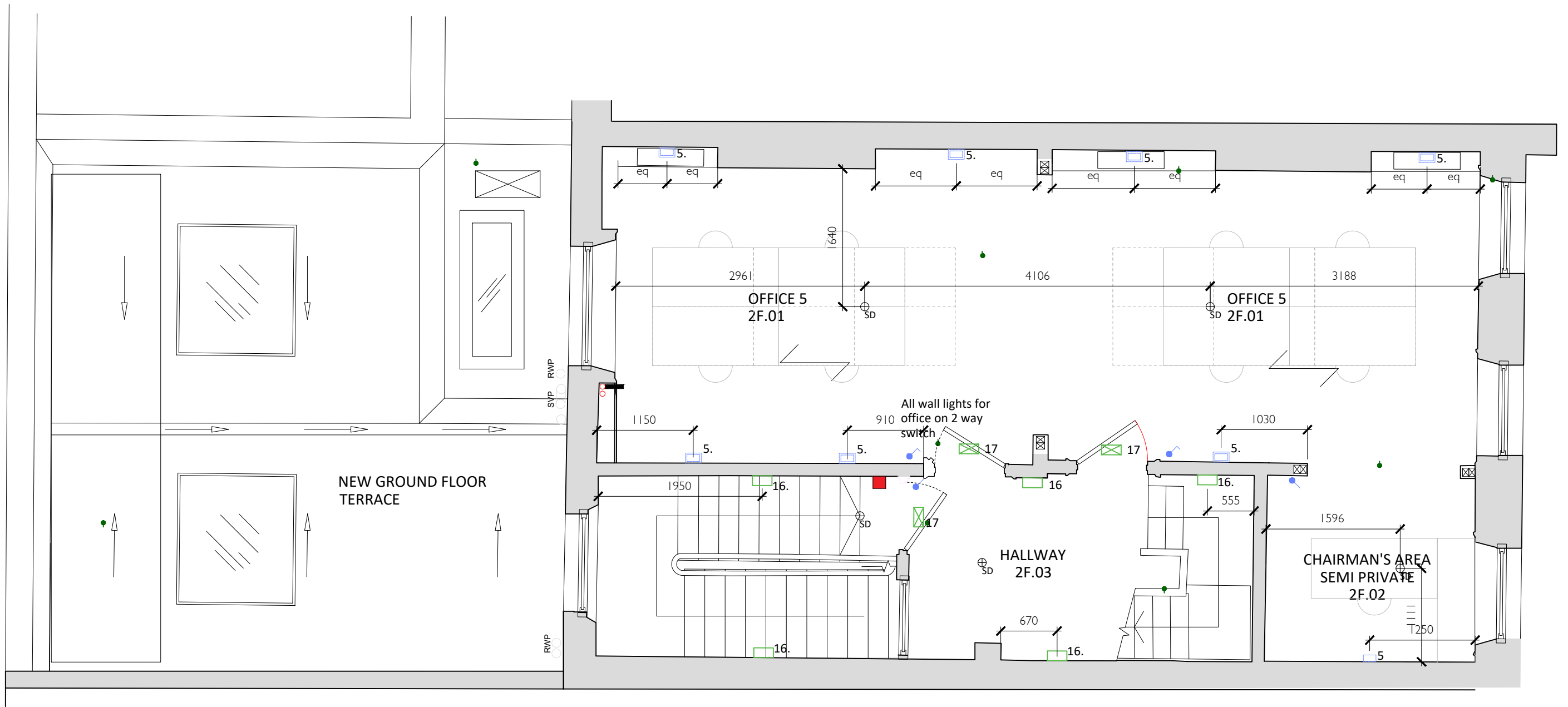
Drawing title: First Floor Plan

© Copyright Neil Wilson Architects Limited. Do not scale from this drawing. All dimensions to be checked on site.



NEIL WILSON ARCHITECTS
37 Montagu Square
London W1H 2LL
Office + 44 (0) 20 7723 6630
Mobile + 44 (0) 7973 657 579
neil@neilwilsonarchitects.co.uk

www.neilwilsonarchitects.co.uk



LEGEND

1. ---○---

Recessed track light -
FLOS RUNNING MAGNET
(allow 120mm recess)
2. ---○---

Surface mounted track light
FLOS TRACKING MAGNET
3. ◎

Surface mounted ceiling light
FLOS: KAP 80 - Surface Round
2700K - Optic Flood
E: Black, I: Gold
4. ○

Recessed ceiling light
FLOS: Easy Kap 80 Fixed
2700K - Optic Flood
(B1. White)
5. □

Wall light 1700mm above ffl.
Sammode - G3
6. □

Decorative Wall light
located 1600mm above ffl

7. □

Decorative Wall light
located 1600mm above ffl
8. □

Decorative Wall light
located 1600mm above ffl
9. □

Decorative Wall light
located 1600mm above ffl
10. □

Decorative Wall light
located 1600mm above ffl
11. □

Surface mounted ceiling light

12. ✨

Pendant light fitting.
13. —

LED LIGHT STRIP
IP 57
Colour temperature TBC
14. ○

BASIC UNDERCUPBOARD
Surface mounted spotlight
Matt white finish
15. ◎

non maintained emergency
luminaire
16. □

Adapted emergency and
decorative wall light located
1700mm above ffl

17. ☒

Maintained exit box
ceiling mounted above door, use existing
locations where possible.
18. □

External wall light
19. □

External wall light
located at low level.
TBC on site
20. □

External wall light
located at low level.
TBC on site
21. IP

SHOWERLIGHT A
Recessed bathroom light,
IP 54 Matt white finish

SWITCHES

Switches shown adjacent to be grouped onto single plates with multiple switches where possible.

- 1 way switch.

1 way switch on dimmer.
- 2 way switch.

2 way switch on dimmer.
- 3 way switch.

3 way switch on dimmer.

NOTES

All recessed fittings to have smoke hoods to provide 30 mins fire protection.

Supplier to specify appropriate lamp fittings.

Lights in hallway areas to be on a timer with PIR and controls / override in the cup'd next to the front door

Fire Alarm System (refer to contractor plans for details)

- Manual Call Points
- Smoke Detector
- Heat Detector
- Flashing Sound Beacon

Circuit.

PIR

Passive infrared sensor or motion sensor

Revisions:

- A - 13/01/2020 - fire layer added / lighting amended
- B - 04/02/2020 - Lighting track amended / various
- C - 11/02/2020 - Lighting key amended / flashing beacons added WC's
- D - 14/02/2020 - Lighting amended

Notes: All dimensions in mm.

Type
CONSTRUCTION DRAWING

Dwg. no. C - 2018.06.814 D

Date: Oct. 2019

Scale: 1:50@A3

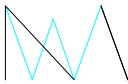
Drawn/checked: ER / NW

Client: Fitzroy Square Ltd

Job title: 28 Fitzroy Square

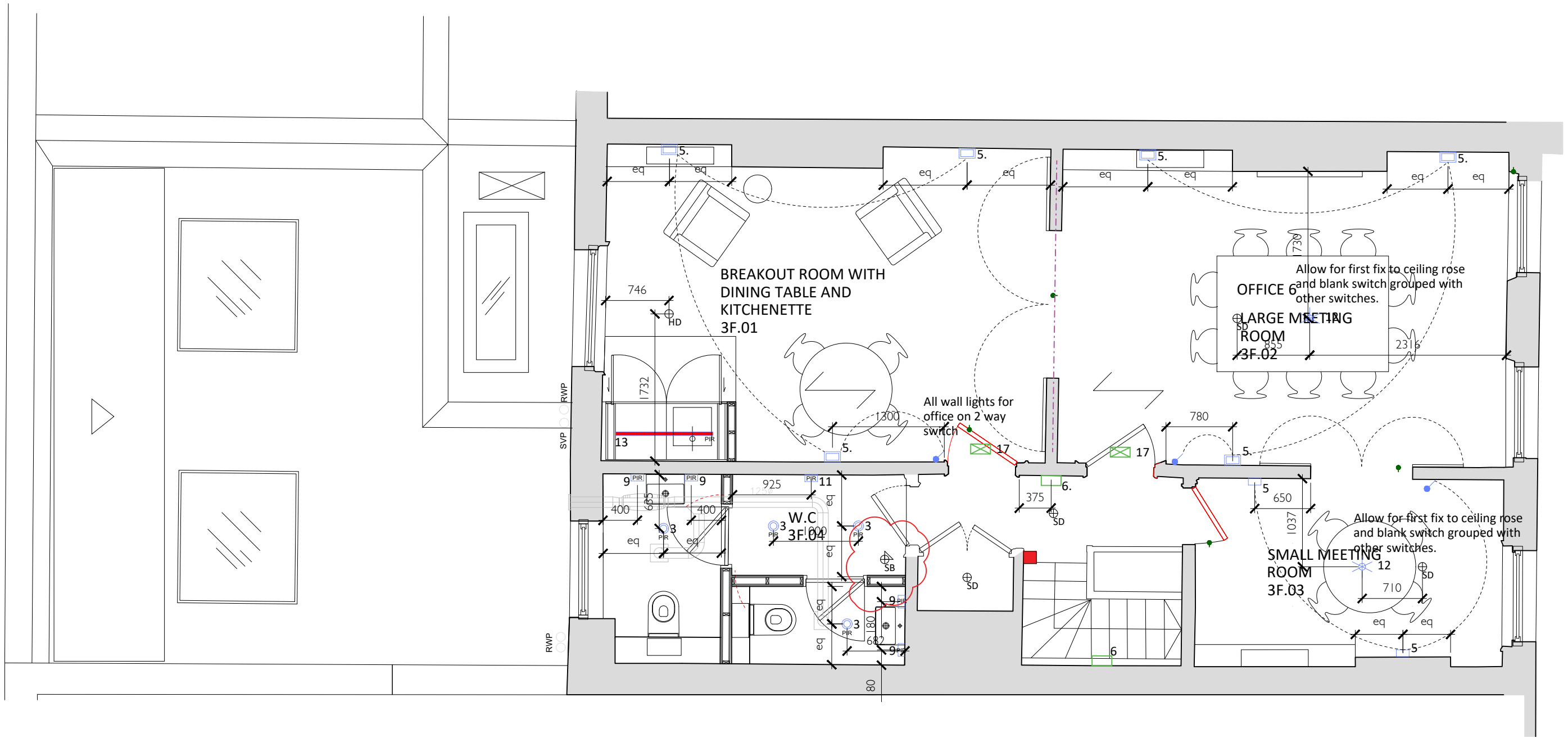
Drawing title: Second Floor Plan

© Copyright Neil Wilson Architects Limited. Do not scale from this drawing. All dimensions to be checked on site.



NEIL WILSON ARCHITECTS
37 Montagu Square
London W1H 2LL
Office + 44 (0) 20 7723 6630
Mobile + 44 (0) 7973 657 579
neil@neilwilsonarchitects.co.uk

www.neilwilsonarchitects.co.uk



LEGEND

1. ---○---

Recessed track light - FLOS RUNNING MAGNET (allow 120mm recess)
2. ---○---

Surface mounted track light FLOS TRACKING MAGNET
3. ◎

Surface mounted ceiling light FLOS: KAP 80 - Surface Round 2700K - Optic Flood E: Black, I: Gold
4. ○

Recessed ceiling light FLOS: Easy Kap 80 Fixed 2700K - Optic Flood (B1. White)
5. □

Wall light 1700mm above ffl. Sammode - G3
6. □

Decorative Wall light located 1600mm above ffl
7. □

Decorative Wall light located 1600mm above ffl
8. □

Decorative Wall light located 1600mm above ffl
9. □

Decorative Wall light located 1600mm above ffl
10. □

Decorative Wall light located 1600mm above ffl
11. □

Surface mounted ceiling light
12. ✨

Pendant light fitting.
13. —

LED LIGHT STRIP IP 57 Colour temperature TBC
14. ○

BASIC UNDERCUPBOARD Surface mounted spotlight Matt white finish
15. ⊙

non maintained emergency luminaire
16. □

Adapted emergency and decorative wall light located 1700mm above ffl
17. ☒

Maintained exit box ceiling mounted above door, use existing locations where possible.
18. □

External wall light
19. □

External wall light located at low level. TBC on site
20. □

External wall light located at low level. TBC on site
21. IP

SHOWERLIGHT A Recessed bathroom light, IP 54 Matt white finish

SWITCHES

Switches shown adjacent to be grouped onto single plates with multiple switches where possible.

- 1 way switch.

1 way switch on dimmer.
- 2 way switch.

2 way switch on dimmer.
- 3 way switch.

3 way switch on dimmer.

NOTES

All recessed fittings to have smoke hoods to provide 30 mins fire protection.

Supplier to specify appropriate lamp fittings.

Lights in hallway areas to be on a timer with PIR and controls / override in the cup'd next to the front door

Fire Alarm System (refer to contractor plans for details)

- Manual Call Points

Smoke Detector

Heat Detector

Flashing Sound Beacon

Circuit.

PIR Passive infrared sensor or motion sensor

Revisions: Notes: All dimensions in mm.

- A - 13/01/2020 - fire layer added / lighting amended
- B - 04/02/2020 - Lighting track amended / various
- C - 11/02/2020 - Lighting key amended / flashing beacons added WC's
- D - 14/02/2020 - Lighting amended

CONSTRUCTION DRAWING

Dwg. no. C - 2018.06.815 D

Date: Oct. 2019

Scale: 1:50@A3

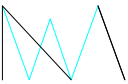
Drawn/checked: ER / NW

Client: Fitzroy Square Ltd

Job title: 28 Fitzroy Square

Drawing title: Third Floor Plan

© Copyright Neil Wilson Architects Limited. Do not scale from this drawing. All dimensions to be checked on site.



NEIL WILSON ARCHITECTS
37 Montagu Square
London W1H 2LL
Office + 44 (0) 20 7723 6630
Mobile + 44 (0) 7973 657 579
neil@neilwilsonarchitects.co.uk

www.neilwilsonarchitects.co.uk