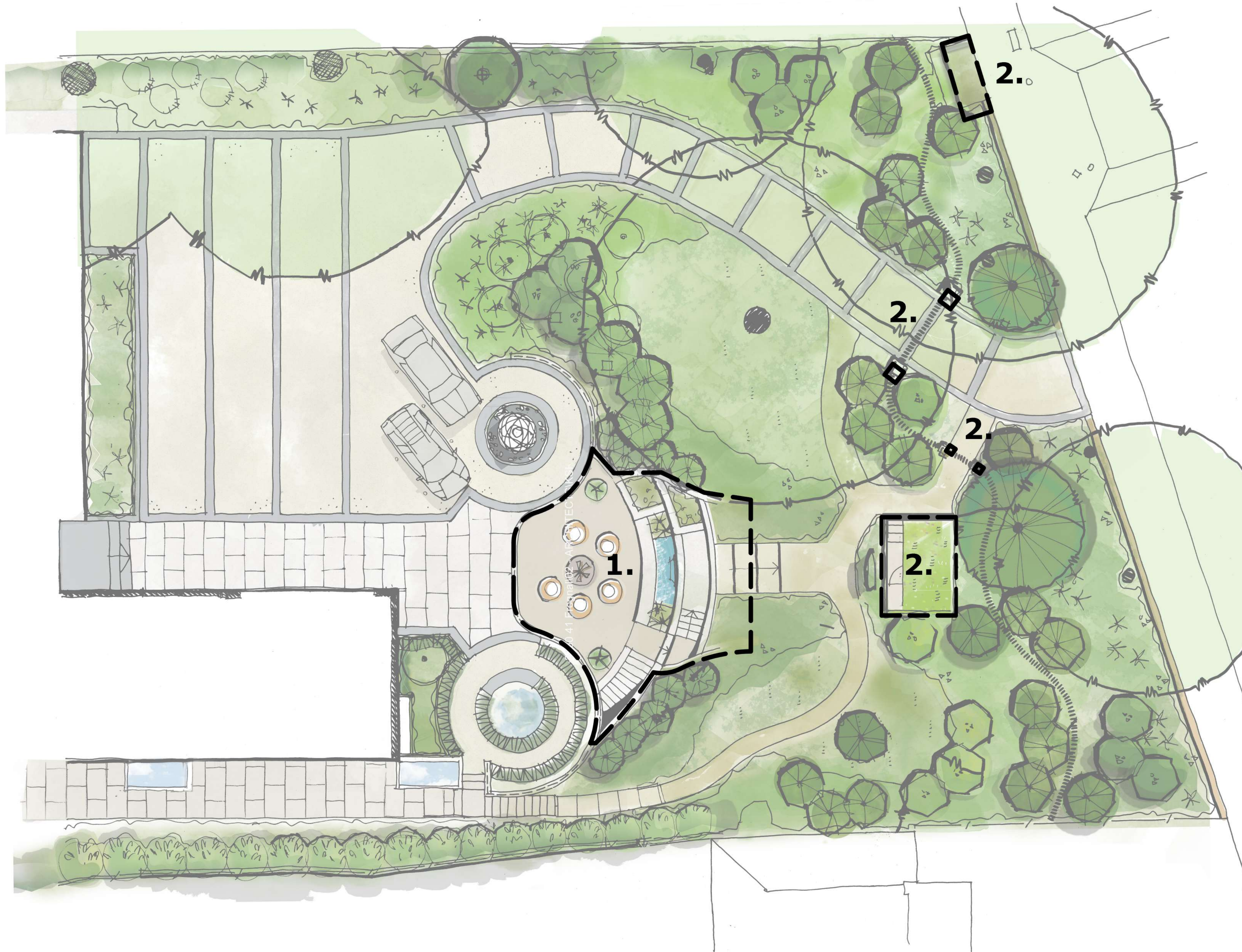


## 41 Frognaal

Current applications and approvals within the front garden proposals



### 1. Lower ground floor courtyard

Hard landscaping works under existing approval  
Ref: 2016/4558/P

### 2. Planning approval subject to discharge of conditions

Garden Store  
Bin Store  
Pedestrian/Vehicular Gates  
Ref: 2019/1979/P

41 Frognal  
Front garden general arrangement

Existing alignment of  
driveway retained

SCULPTURE  
Sculpture to driveway,  
screened from road by tree  
planting

SCULPTURE

STEPS  
Stepped access to lower  
part of garden

KEY LANDSCAPE FEATURES

- 1. Driveway/approach
- 2. Lower ground floor courtyard garden
- 3. Pedestrian footpath (permeable)
- 4. Bin Store
- 5. Pedestrian Entrance
- 6. Garden store

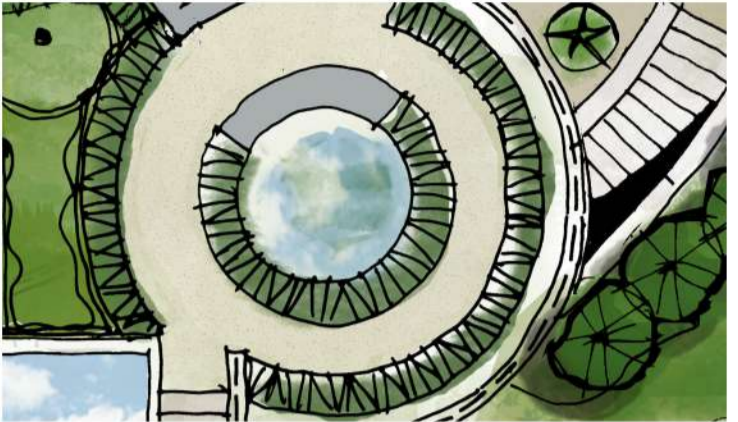
0m 1m 5m 10m



NOTES  
1. Read in conjunction with all relevant Architects, Engineers & design team drawings & specifications  
2. Any discrepancies must be drawn to the attention of the lead consultant in writing  
3. All dimensions are in millimeters unless otherwise noted & are subject to checking on site prior to fabrication or ordering of materials  
4. This drawing is the copyright of Bowles & Wyer (and other consultants where referenced)



Feature sculpture on ground floor level driveway.



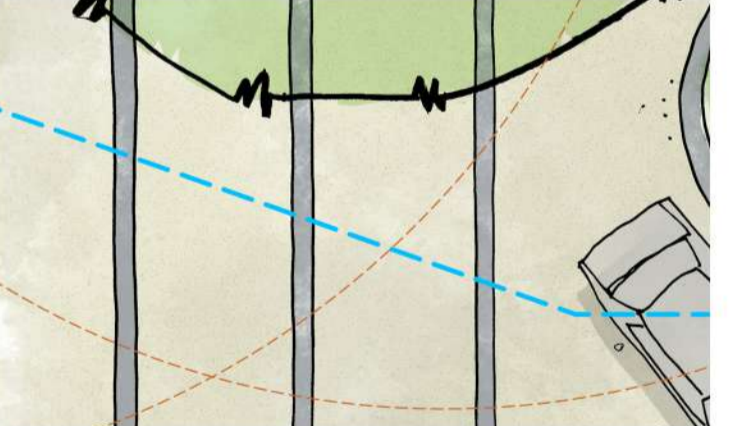
Decorative sculpture planting . Steps/path showing access to front garden from driveway courtyard.



Sunken courtyard with water feature and sculpture focal point at the north east end. Stepped planting beds and steps leading to garden store



Driveway entrance with gate and timber feature fence.



Driveway showing Atlantic gneiss setts with resin bound gravel infill. Thicker dashed line shows extent of basement.

BOWLES & WYER

5 Williams Court, Tunnel Way, Pistone, Nr. Leighton Buzzard, LU7 9GJ  
Tel: 01296 662439 Fax: 01296 663959 Email: admin@bowleswyer.co.uk

project title

41 FROGNAL

drawing

GENERAL ARRANGEMENT - FRONT GARDEN

job number

2160

drawing number

2160-P-02

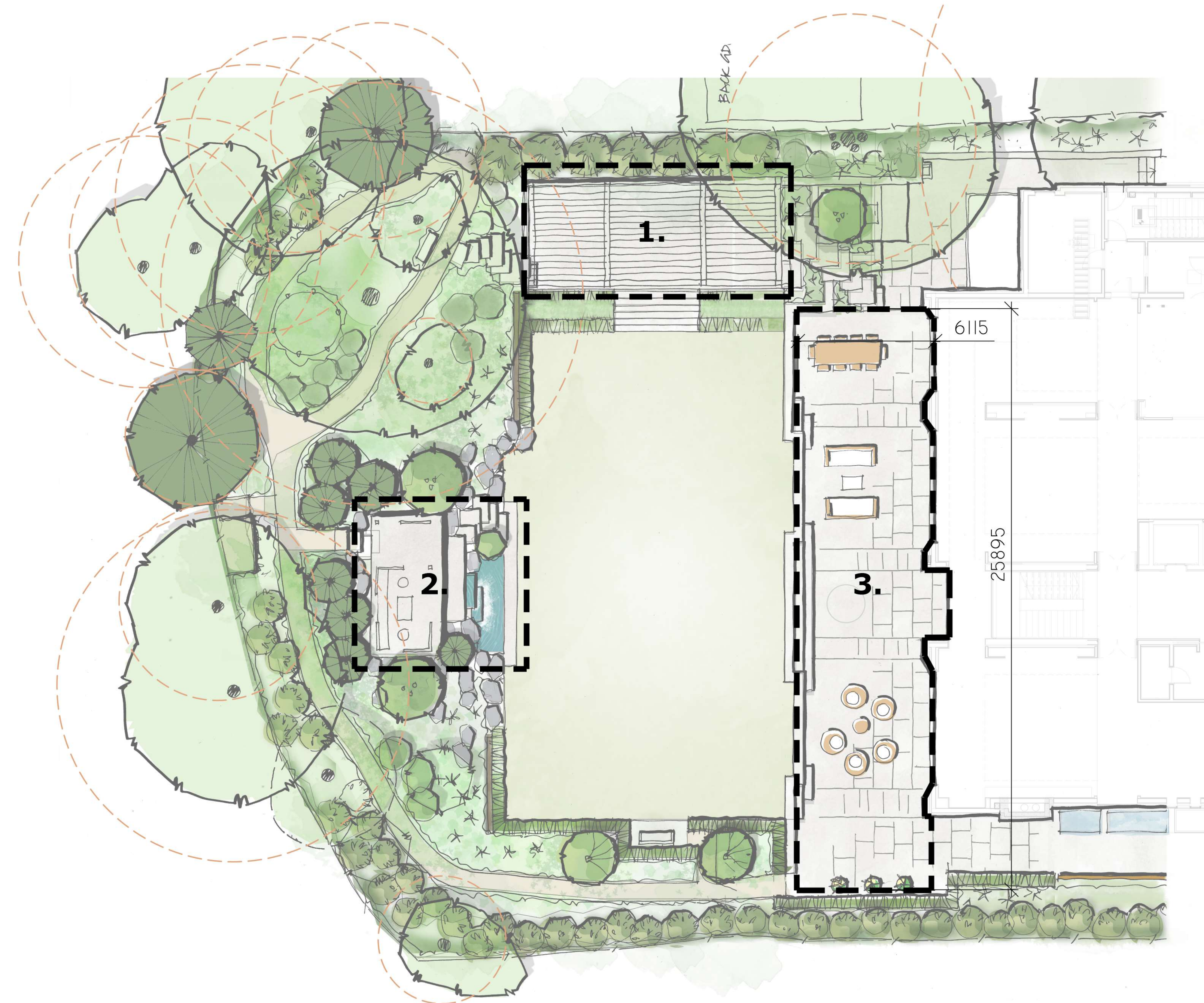
status

PLANNING

scale 1:100 @A1 / 1:200 @A3

## 41 Frognal

Current applications and approvals within the rear garden proposals



### 1. Pergola Terrace

Works being considered under current application  
Ref: 2020/0419

### 2. Teahouse Works

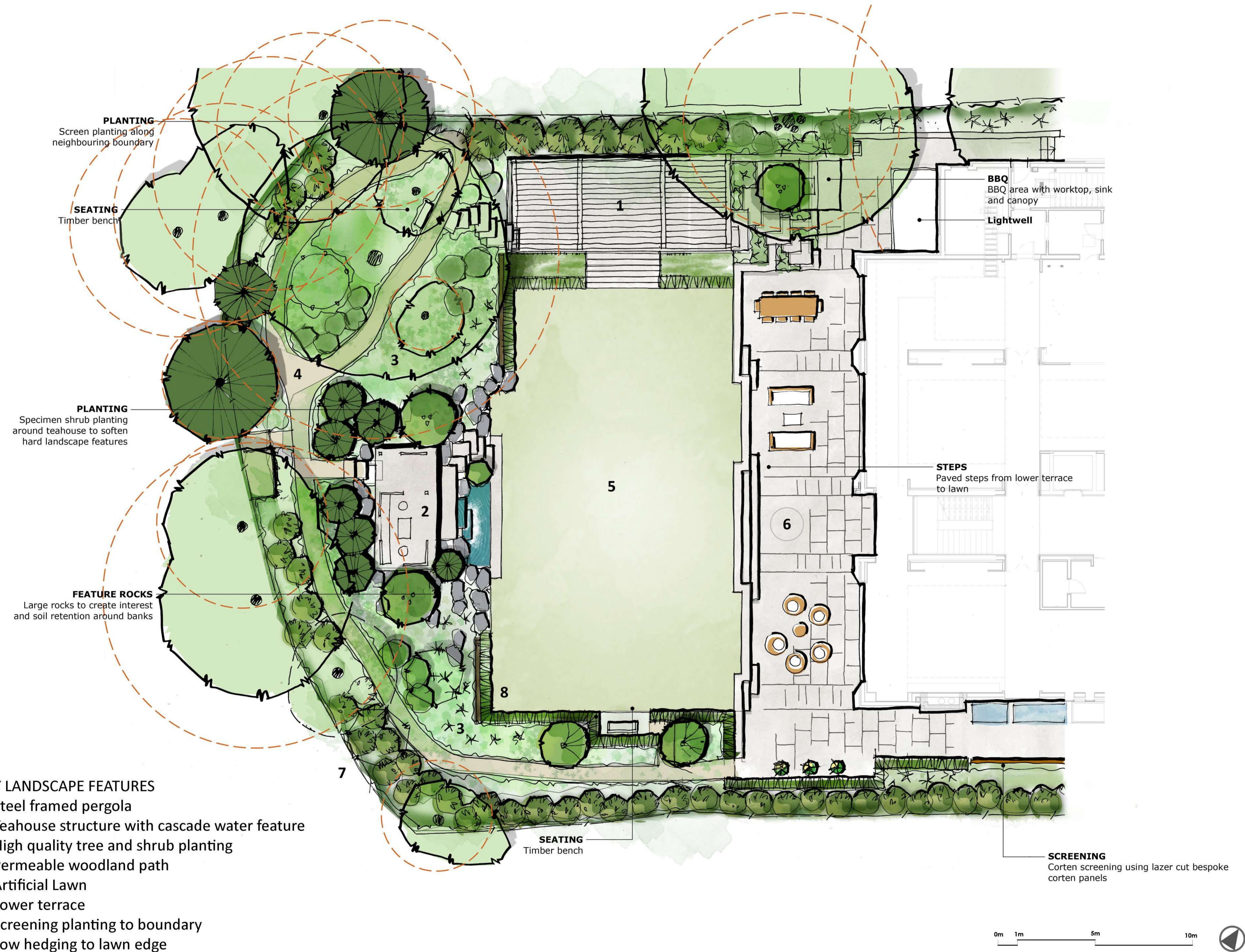
Permitted Development under the GPDO - subject  
to a separate Certificate of Lawfulness application.

### 3. Rear Garden Terrace

Hard landscaping implemented in accordance with  
the current approved consent Ref: 2016/4558/P

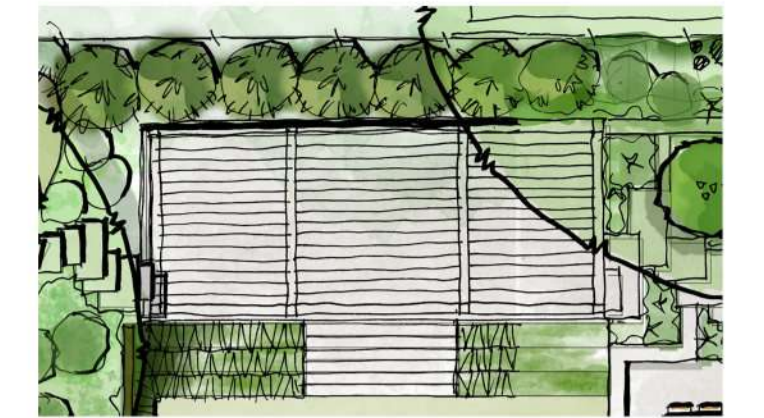
41 Frognal

Back garden general arrangement

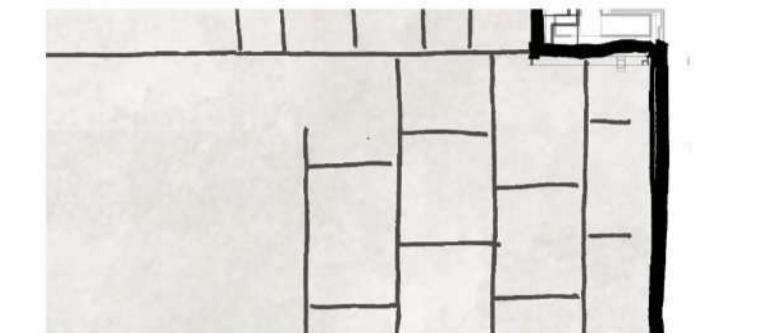


notes

1. Read in conjunction with all relevant Architects, Engineers & design team drawings & specifications
2. Any discrepancies must be drawn to the attention of the lead consultant in writing
3. All dimensions are in millimeters unless otherwise noted & are subject to checking on site prior to fabrication or ordering of materials
4. This drawing is the copyright of Bowles & Wyer (and other consultants where referenced)



Camargue modular patio cover with rotating roof blades by Renson. Outdoor fire place recessed into retaining wall.



1190mm x 1190mm x 12mm thick MADE 2.0 Bush Hammered porcelain slabs from DOMUS. Additional bands in 990mm x 308mm x 50mm thick Grigio Olivio flamed paving from GD Stones.



Timber framed Teahouse pavilion with water fall feature. Series of 'floating' steps leading up to pavilion platform and through to connect resin bound path to lawn area.



Floating steps from terrace leading up to pavilion. Planting pockets around paving to aid visual 'floating' effect.



Existing trees, dashed line shows root protection zone.

rev date by notes

**BOWLES & WYER**

5 Williams Court, Tunnel Way, Pistone, Nr. Leighton Buzzard, LU7 9GJ  
Tel: 01296 662439 Fax: 01296 663959 Email: admin@bowleswyer.co.uk

project title  
**41 FROGNAL**

drawing  
**GENERAL ARRANGEMENT - REAR GARDEN**

job number  
**2160**

drawing number  
**2160-P-01**

status  
**PLANNING**

scale 1:100 @A1 / 1:200 @A3