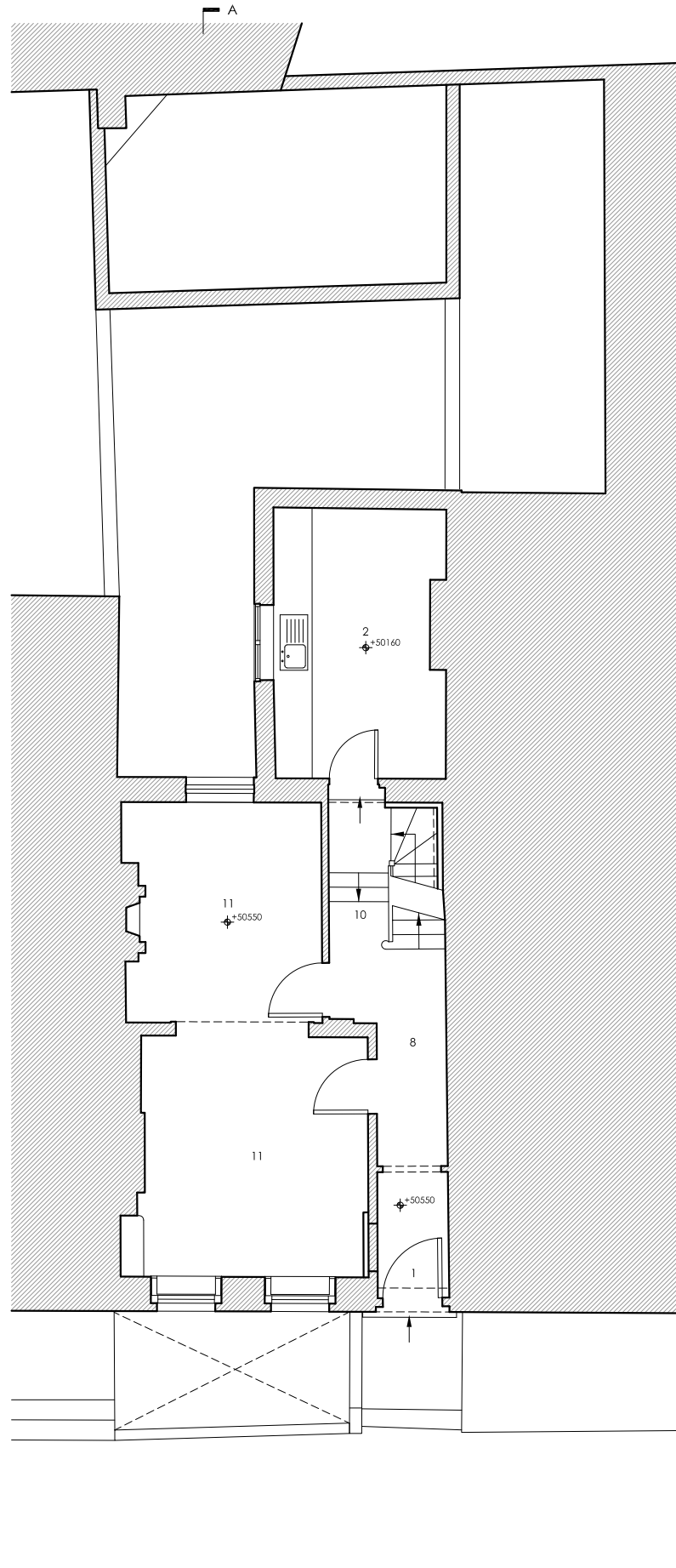


01 ORIGINAL LOWER GROUND FLOOR PLAN
PL001 SCALE 1:100 @ A3



02 ORIGINAL GROUND FLOOR PLAN
PL001 SCALE 1:100 @ A3

Notes

ORIGINAL PLANS ACCORDING TO PLANNING APPLICATION 2008/1723/L BY "ASK PLANNING"



LEGEND

1. Residential entrance
2. Kitchen
3. Garden
4. Bathroom
5. Utility
6. Former service room used for storage
7. Fireplace
8. Corridor
9. Street lightwell
10. Stairwell
11. Bedroom
12. Storage
13. Underground drainage to mains sewer
14. Hot water tank
15. Shower room
16. Mezzanine
17. Manhole

Revision	Date	Reason	Drawn	Check
/	18.02.15	Planning	GM	MF
A	26.04.16	Planning	PS	MF

All dimensions must be checked on site and not scaled from this drawing
© Mark Fairhurst Ltd.

markfairhurstARCHITECTS

48A Union Street, London, SE1 1TD. T 020 7407 7070, E info@mark-fairhurst.co.uk

Project: 9 Leigh Street, London, WC1H Client: Rainbow Properties

Drawing title: Original Lower Ground & Ground Floor Plans

Scale: 1:100@A3; 1:50@A1 Date: Feb. 15 Drawn by: GM

Project number: 1314 Drawing number: PL001

Status: Planning Revision: A

