



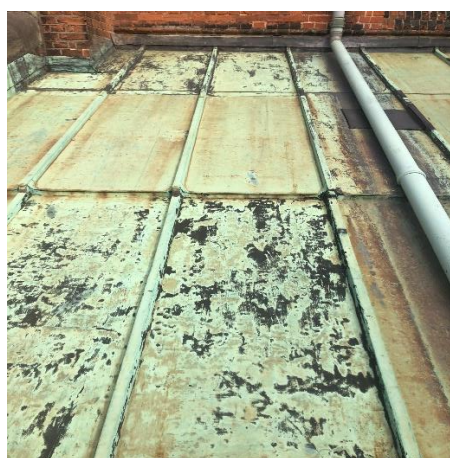
General View



Repaired batten roll end with Mastic



Evidence of rusting from underside corrosion



Evidence of historic bitumen paint



Patch repairs over batten rolls





Large crack in coping



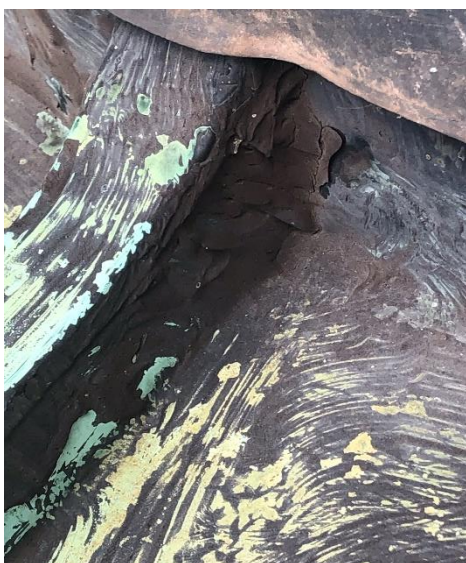
Missing pointing to parapet brickwork



RW pipe unfixed at the bottom, poor brickwork.



Missing pointing above lead flashing



Mastic repair to batten roll



Stainless steel gutter lining