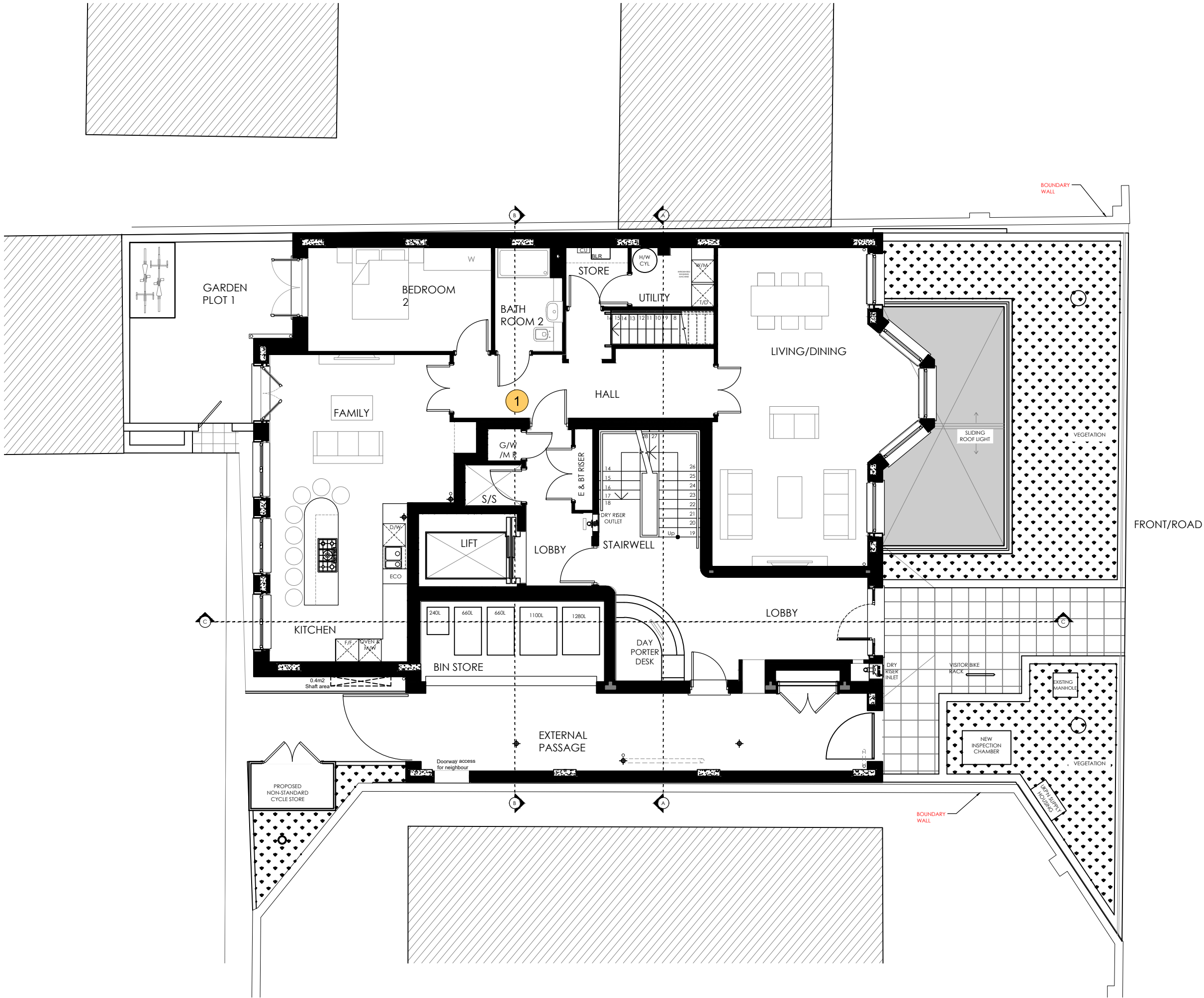


© This drawing and the works depicted contains information that is the copyright of Carlton Design Partnership Ltd. This drawing may also contain copyrighted information of third parties. This drawing or part thereof may not be reproduced, re-used or altered except with the written permission of the originators. No liability will be accepted for amendments made by third parties. Scaled measurements must not be taken from this drawing, other than for planning purposes. Any discrepancy or disparity must be notified to the originator in writing. This drawing may contain Ordnance Survey Data that is subject to Crown Copyright. All Rights reserved.

Rev	Date	Drawn	Checked
P	08/04/19	NH	
PRELIMINARY ISSUE.			
P1	28/06/19	NH	
FLOOR PLANS AMENDED TO CLIENT COMMENTS			
P2	05/12/19	JP	
PLANNING UPDATED TO CLIENT COMMENTS			
P3	20/02/20	RF	
CYCLE STORAGE & LIFT AMENDED. NOTES ADDED.			
P4	03/03/20	RF	
LIFT SIZE & CYCLE STORE AMENDED. CYCLE STORE & UKPN SUPPLY HOUSING ADDED.			
P5	04/03/20	RF	
NON-STANDARD CYCLE STORE AMENDED.			



Project:
ST. JOHN'S WOOD PARK
CAMDEN
LONDON

Drawing Title:
GROUND FLOOR LEVEL



carlton
design partnership
Selwyn House, 32a Castle Way, Southampton, SO14 2AW
023 8011 8866 www.carltondesignpartnership.com

1:100
@A3

Drg No: 1900-SK-02 Rev: P5