

01

Cill Detail

Scale: 1:5@A3

DESIGN NOTE:

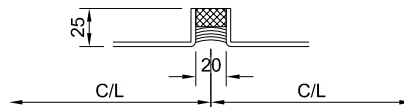
COLOUR CHANGE TO SW206G RAL 9006 (METT SILVER) ON GROUND FLOOR STICK SYSTEMS - AS PER RFI-00137/ CRF-034 RESPONSE - 28.02.19

SCHUCO FW60+ SG CURTAIN WALL SYSTEM
250mm MULLION 336270
INSERT SLEEVE 336280
255mm TRANSOM 493690
COLOUR: SW206G 60microns CLASS 1 D1036 (RAL 9006)

C/WALLING FIXING BRACKET TO BE FABRICATED FROM 6mm AND 8mm THK MILD STEEL PLATE (GRADE S275)
2No. COATS OF GALVAFROID SHOP APPLIED PRIMER
C/WALLING FIXED TO BRACKET WITH:
D933/M16x120mm A4 A4 S/STEEL SET BOLTS
D125/M16 & D127/M16 A4 S/STEEL FLAT/SPRING WASHERS
D934/M16 FULL HEAD A4 A4 S/STEEL NUTS
Tightening Torque for M16 = 140Nm
BRACKETS FIXED TO UPSTAND WITH:
2No. HALFEN HS 50/30 -GV M16x50 8.8 T-BOLT
2No. D934/M16 FULL NUT
2No. D127 M16 SPRING WASHER
2No. HW01 SERRATED WASHER PLATE
BRACKETS ISOLATED FROM STEEL BEAMS WITH 0.75mm CORTEX 0750 EPDM.

2mm THK STAINLESS STEEL CILL FLASHING
Grade 316 ~ Finish: SATIN
6x100mm SLOTS SPACED ACROSS GLAZING EDGE TO TAKE SCHUCO CLIPS. FIXED BACK TO UPSTAND WITH HILTI HUS_HR 6x35mm SELF DRIVE SCREW ANCHORS (Order No.: #290005)
INSTALLATION NOTE: ANY FIXINGS THAT PENETRATE MEMBRANES MUST BE FULLY SEALED WITH SILICONE SEALANT

SECTION X-X



CILL PRESSING JOINT.
20mm TO MATCH GLAZING SYSTEM. SEALED WITH BLACK SILICONE SEALANT ON CLOSED CELL 30mmØ BACKER ROD

0.75mm CORTEX 0750 EPDM MEMBRANE GLAZED INTO BTM TRANSOM & DRESSED & BONDED OVER UPSTAND MEMBRANE
EPDM NOTE:
ALL JOINT/OVERLAPS TO BE A MIN. 150mm & BONDED WITH CORTEX 0775 CONTACT ADHESIVE TO MANUFACTURERS RECOMMENDATIONS
SEE DESIGN NOTES FOR ISSUED TECHNICAL REPORT REFERENCE & NUMBER

U/S OF TRANSOM & FACE OF UPSTAND TO BE FITTED WITH ROCKWOOL RWA45 INSULATION. IF REQ IDP INSULATION FASTENERS TO BE USED TO MANUFACTURERS RECOMMENDATIONS

0.7mm EPDM VAPOUR BARRIER FIXED & SEALED TO TRANSOM WITH USE OF 1.6mm THK MILL FINISH ALUM. VAPOUR BARRIER COVER PRESSING. FIXED WITH D7981/4.8x13mm A4 S/S SCREWS @ 300mm CTS AND BONDED TO FACE OF UPSTAND

IMPORTANT
PBA EAI019 LEVEL ~ AS PER PBA DWG/20227/117/112/02 - REV D (RECEIVED 15/02/19)
GND LVL +27.600

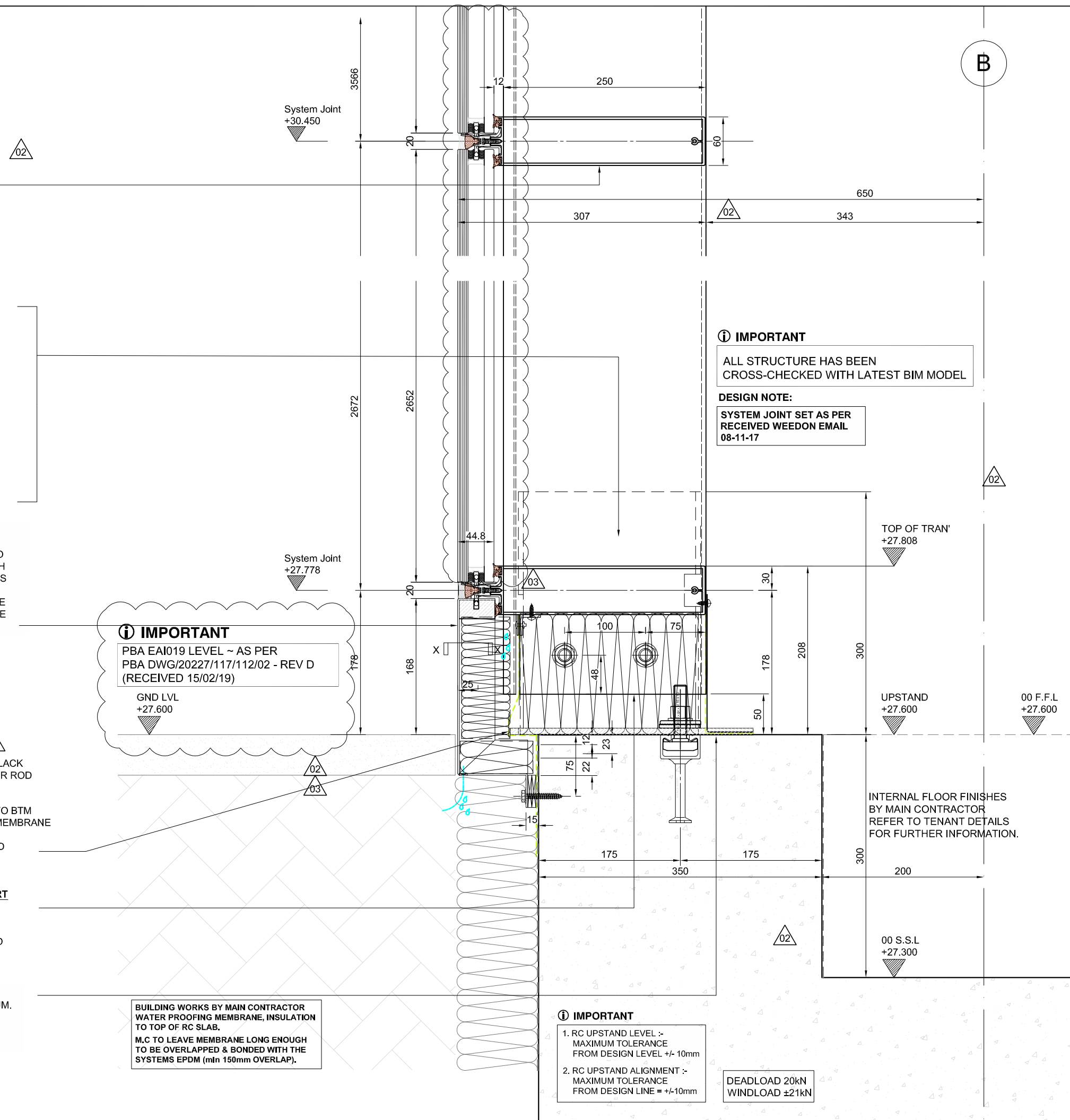
BUILDING WORKS BY MAIN CONTRACTOR WATER PROOFING MEMBRANE, INSULATION TO TOP OF RC SLAB.
M.C TO LEAVE MEMBRANE LONG ENOUGH TO BE OVERLAPPED & BONDED WITH THE SYSTEMS EPDM (min 150mm OVERLAP).

IMPORTANT
1. RC UPSTAND LEVEL :- MAXIMUM TOLERANCE FROM DESIGN LEVEL +/- 10mm
2. RC UPSTAND ALIGNMENT :- MAXIMUM TOLERANCE FROM DESIGN LINE = +/- 10mm

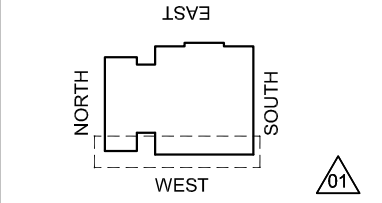
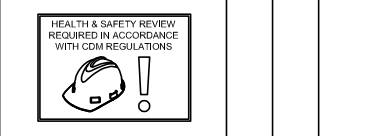
IMPORTANT
ALL STRUCTURE HAS BEEN CROSS-CHECKED WITH LATEST BIM MODEL

DESIGN NOTE:
SYSTEM JOINT SET AS PER RECEIVED WEEDON EMAIL 08-11-17

DEADLOAD 20kN
WINDLOAD ±21kN



CDM Regulations			
Hazards	Date Added	Date Mitigated	Risk Assessment Date
HEAVY GLASS - LOADS INDICATED	05/02/15		



KEY PLAN

DESIGN NOTES: Technical Report list:

DOCUMENT TITLE:	Doc Number:	CONJECT Number
Facade Design & Glass Risk Assessment	3135-TR003	KXC-S1-001-Y-21-TR003
Glass Technical report	3135-TR004	KXC-S1-001-Y-21-TR004
Technical data for H&S fire stop details	3135-TR005	KXC-S1-001-Y-21-TR005
Material data sheet report	3135-TR006	KXC-S1-001-Y-21-TR006
Door schedule & Operation Information	3135-TR007	KXC-S1-001-Y-21-TR007
Facade Airborne Acoustic report	3135-TR008	KXC-S1-001-Y-21-TR008
Facade Vertical & Horizontal Acoustic report	3135-TR009	KXC-S1-001-Y-21-TR009
Accommodation of structural movement	3135-TR012	KXC-S1-001-Y-21-TR012
Halfen channel & Slab edge design	3135-TR013	KXC-S1-001-Y-21-TR013
Thermal Safety Check on Glass	3135-TR022	KXC-S1-001-Y-21-TR022

DO NOT SCALE : IF IN DOUBT ASK!
THIS DRAWING REMAINS THE PROPERTY OF McMULLEN FACADES LTD AND SHOULD NOT BE COPIED NOR ITS CONTENTS DIVULGED WITHOUT PRIOR CONSENT

Signed: SPATTERSON
Date: 04/04/18
Internal Quality Check

No.	Intd	Date	Description	Date
003	DR	28/02/19	ALL COMMENTS RECEIVED - FOR CONSTRUCTION ISSUE	28/02/19
002	DR	19/12/18	THIRD ISSUE	19/12/18
001	SP	20/07/18	ALL COMMENTS RECEIVED	20/07/18
000	SP	04-05-18	FIRST ISSUE	04-05-18

Contract: KINGSCROSS S1
 Architect: MOSSISSIAN
 Main Contractor: BAM
 Drawing: WEST ELEV GND FLOOR BAY STUDY DETAILS
 Drawn By: SPatterson Date: 04/04/18
 Scale: 1:5 @ A3 MFL No.: 3135-501
 DMS Code: KXC-S1-001-Y-3135-21-501 Revision: 003

DRAWING ISSUED FOR: CONSTRUCTION
STATUS OF PREVIOUS RETURN: A (B) C -

McMullen Facades Limited
66 Lurgan Road, Moira, Craigavon, Co. Armagh BT67 0LX
Tel: +44 (0) 28 9261 9688
Fax: +44 (0) 28 9261 9711
Email: design@mcmullenfacades.com