

01

Door Details

Scale: 1:5@A3

SCHUCO FW60+ SG CURTAIN WALL SYSTEM
250mm MULLION 336270
INSERT SLEEVE 336280
255mm TRANSOM 493690
COLOUR: SW206G 60microns CLASS 1 D1036

PERIMETER OF FRAME TO BE SEALED WITH
BEAD OF SILICONE SEALANT ~ Colour: GREY

20mm JOINT SEALED WITH BLACK DOWSIL 791
SEALANT ON CLOSED CELL BACKER ROD

3mm STAINLESS STEEL MILL FINISH CHECKER PLATE CILL
COVER PRESSING.
TO BE FIXED AND SEALED ONTO A BED OF SILICONE SEALANT
ON TOP OF BRACKET. FIXED WITH
D7982/4.8x50mm A4 S/S SELF TAPPERS

100x6mm THK CONTINUOUS ISOLATION PLATE ON TOP OF RSA

M.F.L EPDM LEFT LONG ENOUGH TO BE FOLDED
AROUND AND UNDER BRACKET TO BE OVERLAPPED
AND BONDED TO FACE OF UPSTAND

EPDM NOTE:
ALL JOINT/OVERLAPS TO BE A MIN. 150mm & BONDED
WITH CORTEX 0775 CONTACT ADHESIVE TO
MANUFACTURES RECOMMENDATIONS
**SEE DESIGN NOTES FOR ISSUED TECHNICAL REPORT
REFERENCE & NUMBER**

THRESHOLD SUPPORT FABRICATED FROM
200x100x10mm THK STAINLESS STEEL PLATE (GRADE
316) FIXED TO FACE OF UPSTAND WITH FISCHER
ANCHORS: FAZ-II-10_20_A4 ANCHORS
Order code: 501406

INSTALLATION NOTE: ANY FIXINGS THAT PENETRATE
MEMBRANES MUST BE FULLY SEALED WITH SILICONE
SEALANT

FACE OF UPSTAND TO BE FITTED WITH 100mm
ROCKWOOL DUO SLAB INSULATION FOR DEPTH OF
BRACKET. JDP INSULATION FASTENERS TO BE USED
TO MANUFACTURES RECOMMENDATIONS

DESIGN NOTE:

COLOUR CHANGE TO SW206G
RAL 9006 (METT SILVER) ON
GROUND FLOOR STICK
SYSTEMS - AS PER RFI-00137/
CRF-034 RESPONSE - 28.02.19

PBA EAI019 LEVEL ~ AS PER
PBA DWG/20227/117/112/02
- REV D (RECEIVED 15/02/19)

IMPORTANT

1. RC UPSTAND LEVEL :-
MAXIMUM TOLERANCE
FROM DESIGN LEVEL +/- 10mm
2. RC UPSTAND ALIGNMENT :-
MAXIMUM TOLERANCE
FROM DESIGN LINE = +/-10mm

M.F.L DOOR NOTE:
ALL DOORS CONFORM TO PART M & BS8300 COMPLIANT
PLEASE REFER TO DOOR IRONMONGERY REPORT TR-007
FOR IRONMONGERY & OPERATION OF ALL DOORS

DOOR ref: D12

IMPORTANT

ALL STRUCTURE HAS BEEN
CROSS-CHECKED WITH LATEST BIM MODEL

STEEL FABRICATED BRACKET FIXED TO
UPSTAND WITH
HALFEN-HS50/30_FV8.8_M16x60 BOLTS

VAPOUR BARRIER TO REAR OF SUPPORT
TO BE OVERLAPPED & BONDED TO
SYSTEM VAPOUR BARRIER ACROSS
THRESHOLD AND ATTACHED SCREEN

VISIBLE FIXINGS:
A4 S/S DOME HEAD NUT D1587/M20

**BUILDING WORKS BY MAIN CONTRACTOR
WATER PROOFING MEMBRANE, INSULATION
TO TOP OF RC SLAB.
M.C TO LEAVE MEMBRANE LONG ENOUGH
TO BE OVERLAPPED & BONDED WITH THE
SYSTEMS EPDM (min 150mm OVERLAP).**

FIRE STOP BY OTHERS

2mm MILL FINISH ALUM. EXT. CORNER PRESSING,
FIXED TO MULLION THROUGH 6mm ISOLATION
PACKER WITH D7981/4.8x32mm A4 S/S SELF TAPPERS.
0.75mm CORTEX 0750 EPDM GLAZED INTO SYSTEM
AS SHOWN.

3mm THK P.P.C ALUM. CORNER PRESSING
FIXED BETWEEN MULLIONS WITH USE OF
25x25x3mm ALUM ANGLES & RP25 A4 S/S
TORX SCREWS EQUALLY SPACED AT NMT
250mm CTS. CAVITY FILLED WITH
ROCKWOOL RVA45 SEMI RIGID
INSULATION SLABS. Colour: SA803G
60microns CLASS 1 D1036 ~ CLASS 1
INTERNAL GRADE

19mm JOINT SEALED WITH DOWSIL 791
SEALANT ON CLOSED CELL BACKER ROD

DOOR ref: D12

DOOR LEAF = 1147

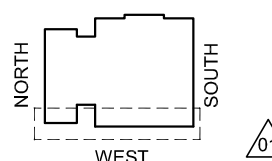
CLEAR PASSAGE @ 90° = 1350

CDM Regulations

Hazards	Date Added	Date Mitigated	Risk Assessment Date
HEAVY GLASS ~ LOADS INDICATED	05/02/15		



TSV3



KEY PLAN

DESIGN NOTES: Technical Report list:

DOCUMENT TITLE	Doc Number	CONJECT Number
Facade Design & Glass Risk Assessment	3135-TR003	KXC-S1-001-Y-21-TR003
Glass Technical report	3135-TR004	KXC-S1-001-Y-21-TR004
Technical data for H&S fire stop details	3135-TR005	KXC-S1-001-Y-21-TR005
Material data sheet report	3135-TR006	KXC-S1-001-Y-21-TR006
Door schedule & Operation Information	3135-TR007	KXC-S1-001-Y-21-TR007
Facade Airborne Acoustic report	3135-TR008	KXC-S1-001-Y-21-TR008
Facade Vertical & Horizontal Acoustic report	3135-TR009	KXC-S1-001-Y-21-TR009
Accommodation of structural movement	3135-TR012	KXC-S1-001-Y-21-TR012
Halfen channel & Slab edge design	3135-TR013	KXC-S1-001-Y-21-TR013
Thermal Safety Check on Glass	3135-TR022	KXC-S1-001-Y-21-TR022

DO NOT SCALE : IF IN DOUBT ASK!

THIS DRAWING REMAINS THE PROPERTY
OF McMULLEN FACADES LTD AND SHOULD
NOT BE COPIED NOR ITS CONTENTS
DIVULGED WITHOUT PRIOR CONSENT

Signed:	SPATTERSON	Internal Quality Check
Date:	04-05-2018	

No.	Intd	Intd	Date		
003	DR	GB	28/02/19	ALL COMMENTS RECEIVED - FOR CONSTRUCTION ISSUE	28/02/19
002	DR	GB	19/12/18	THIRD ISSUE	19/12/18
A/001	SP	SP	20/07/18	ALL COMMENTS RECEIVED	20/07/18
000	SP	SP	04-05-18	FIRST ISSUE	04-05-18

Revision	Check	Description	Date
----------	-------	-------------	------

Contract: KINGSCROSS S1

Architect: MOSSESIAN

Main Contractor: BAM

Drawing: WEST ELEV. GND FLOOR BAY STUDY

Details

Drawn By: SPatterson Date: 04/04/18

Scale: 1:5 @ A3 MFL No.: 3135-505

DMS Code: KXC-S1-001-Y-3135-21-505 Revision: 003

DRAWING ISSUED FOR: STATUS OF PREVIOUS RETURN

CONSTRUCTION A B C -

McMullen Facades Limited

66 Lurgan Road, Moira,

Craigavon, Co. Armagh BT67 0LX

Tel: +44 (0) 28 9261 9688

Fax: +44 (0) 28 9261 9711

Email: design@mcmullenfacades.com