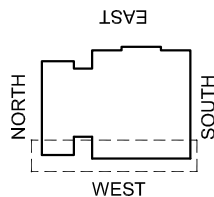


CDM Regulations

Hazards	Date Added	Date Mitigated	Risk Assessment Date
HEAVY GLASS ~ LOADS INDICATED	05/02/15		



KEY PLAN

DESIGN NOTES: Technical Report list:

DOCUMENT TITLE	Doc Number	CONJECT Number
Facade Design & Glass Risk Assessment	3135-TR003	KXC-S1-001-Y-21-TR003
Glass Technical report	3135-TR004	KXC-S1-001-Y-21-TR004
Technical data for HBI fire stop details	3135-TR005	KXC-S1-001-Y-21-TR005
Material data sheet report	3135-TR006	KXC-S1-001-Y-21-TR006
Door schedule & Operation Information	3135-TR007	KXC-S1-001-Y-21-TR007
Facade Airborne Acoustic report	3135-TR008	KXC-S1-001-Y-21-TR008
Facade Vertical & Horizontal Acoustic report	3135-TR009	KXC-S1-001-Y-21-TR009
Accommodation of structural movement	3135-TR012	KXC-S1-001-Y-21-TR012
Halfen channel & Slab edge design	3135-TR013	KXC-S1-001-Y-21-TR013
Thermal Safety Check on Glass	3135-TR022	KXC-S1-001-Y-21-TR022

DO NOT SCALE : IF IN DOUBT ASK!

THIS DRAWING REMAINS THE PROPERTY OF McMULLEN FACADES LTD AND SHOULD NOT BE COPIED NOR ITS CONTENTS DIVULGED WITHOUT PRIOR CONSENT

Signed:	SPATTERSON	Internal Quality Check
Date:	04-05-2018	

No.	Intd	Intd	Date	Revision	Check	Description	Date
002	DR	GB	28/02/19	ALL COMMENTS RECEIVED - FOR CONSTRUCTION ISSUE			28/02/19
001	SP	SP	20/07/18	ALL COMMENTS RECEIVED			20/07/18
000	SP	SP	04-05-18	FIRST ISSUE			04-05-18

Revision	Check	Description	Date
----------	-------	-------------	------

Contract: KINGSCROSS S1

Architect: MOSSESIAN

Main Contractor: BAM

Drawing: WEST ELEV. GND FLOOR BAY STUDY

LEVEL 01 CORNER DETAILS

Drawn By: SPatterson Date: 05/04/18

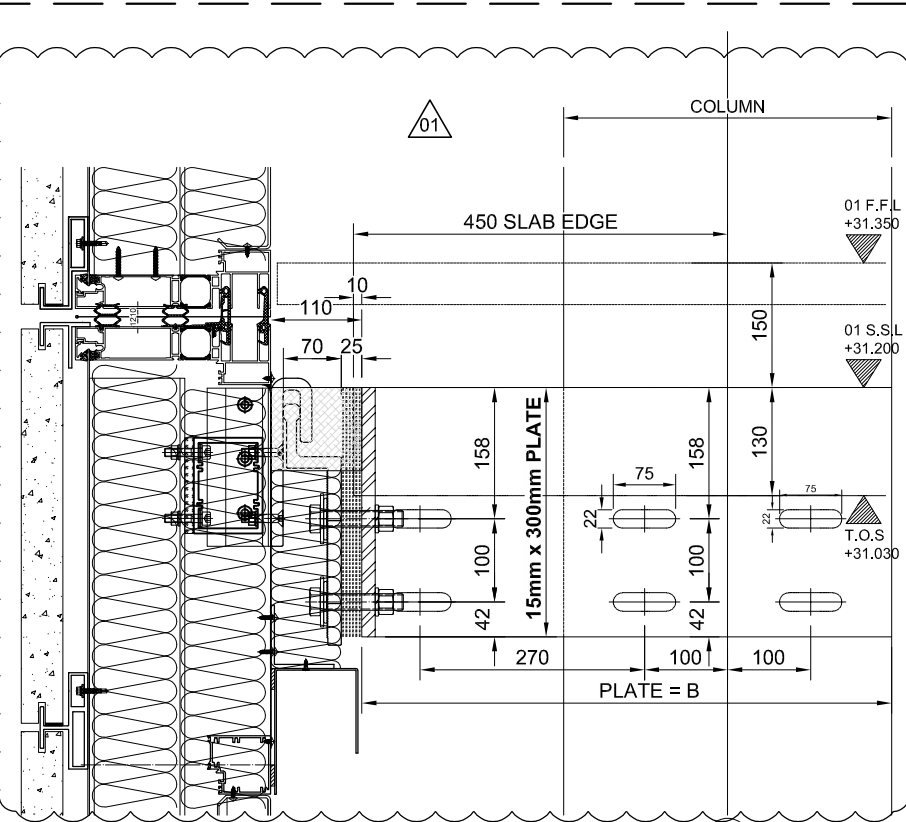
Scale: 1:5 @ A3 MFL No.: 3135-526

DMS Code: KCX-S1-001-Y-3135-21-526 Revision: 002

DRAWING ISSUED FOR: STATUS OF PREVIOUS RETURN

CONSTRUCTION A B C -

McMullen Facades Limited
66 Lurgan Road, Moira,
Craigavon, Co. Armagh BT67 0LX
Tel: +44 (0) 28 9261 9688
Fax: +44 (0) 28 9261 9711
Email: design@mcmullenfacades.com



COLUMN PLATE OUT

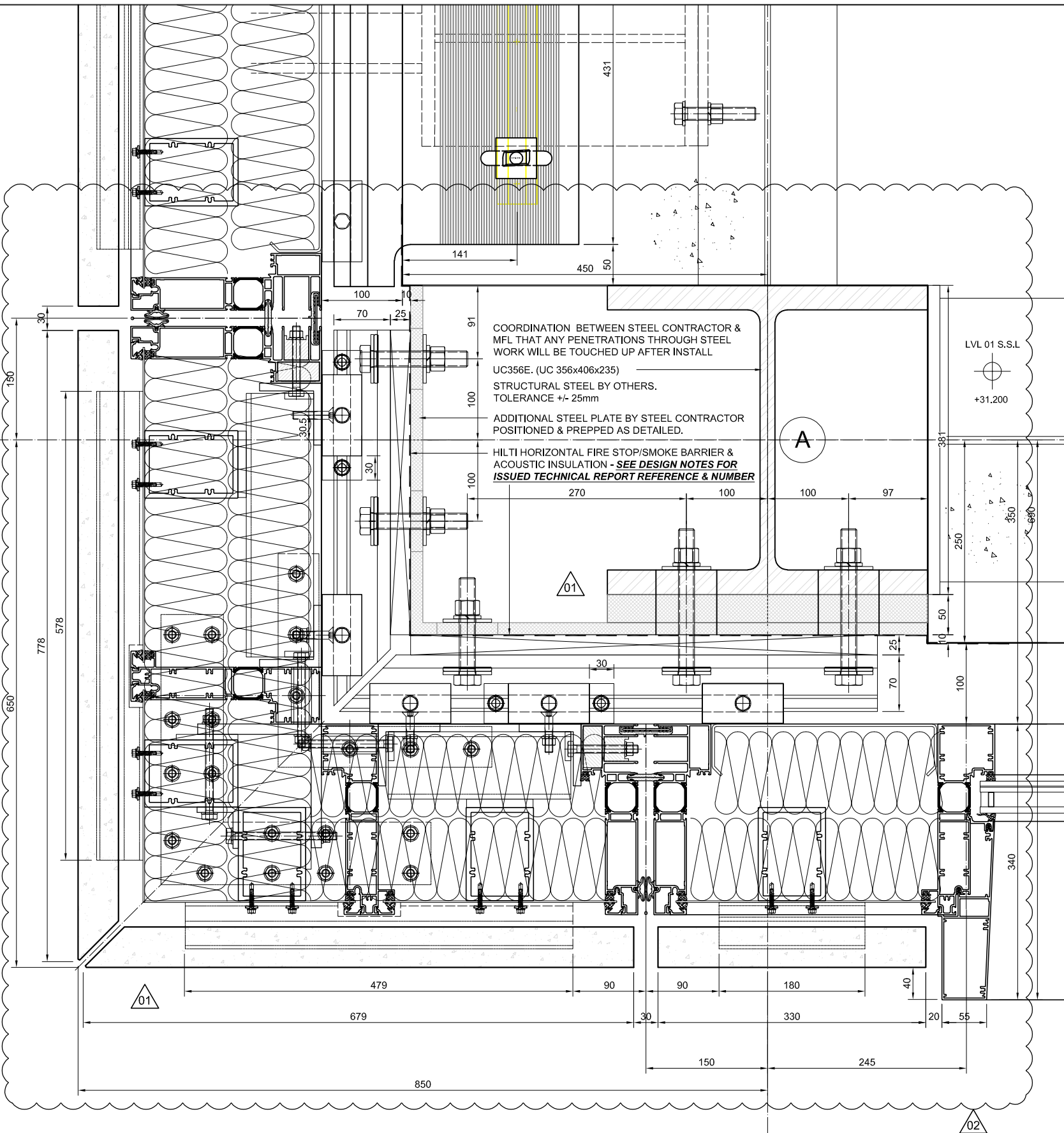
THE DWG INDICATES THE REQUIREMENT TO PLATE OUT THE COLUMNS @ 1st FLOOR LVL TO ACCOMMODATE THE CORNER UN ITS FIXING BRACKETS

MFL PROPOSE 15mm THK STEEL PLATE 300mm DEEP WELDED ACROSS WEB OF COLUMN. PLATE TO BE INSTALLED FLUSH FROM THE SLAB LEVEL AS SHOWN.

ALL COLUMNS & PLATE OUT'S TO BE PRE-DRILLED TO SUIT MFL BRACKETS REQUIREMENTS

HORIZONTAL FIRE STOP & SMOKE BARRIER 110mm ROCKWOOL RW3 INSULATION FITTED UNDER 33% COMPRESSION INTO POSITION. HILTI CFS-SP-WB FIRESTOP SPRAY TO BE APPLIED ON TOP SURFACE OF INSULATION. SPRAY 3mm THICK WITH A MINIMUM OF 13mm OVERLAP UNTO ADJOINING STRUCTURES.

SEE DESIGN NOTES FOR ISSUED TECHNICAL REPORT REFERENCE & NUMBER



UNITISED FIXING BRACKET TO BE FABRICATED FROM 15mm THK MILD STEEL PLATE (GRADE S275) 2No. COATS OF GALVAFROID SHOP APPLIED PRIMER

BRACKETS FIXED TO COLUMN PLATE: D933/M20x90/100mm A4 S/STEEL SET BOLTS D125/M20 & D127/M20 A4 S/STEEL FLAT/SPRING WASHERS D934/M20 FULL HEAD A4 S/STEEL NUTS Tightening Torque for M20 = 273Nm

FULL BRACKET SIZE 2mm GALVANISED PACKING SHIMS PROVIDED TO ALLOW FOR INSTALLATION TOLERANCES

BRACKETS ISOLATED FROM STEEL BEAMS WITH 0.75mm CORTEX 0750 EPDM.

CORNER UNIT HOOK BRACKETS TO BE 'LOCKED' IN POSITION WITH USE OF MODIFIED HOOK SECTION EX-P-19020 @ 30mm WIDE WITH A4 S/S ROLL PIN XXXXXXX

