

IMPORTANT
ALL STRUCTURE HAS BEEN
CROSS-CHECKED WITH LATEST BIM MODEL

COLUMN PLATE OUT

THE DWG INDICATES THE REQUIREMENT TO PLATE OUT THE COLUMNS @ 2nd FLOOR LVL TO ACCOMMODATE THE CORNER UNITS FIXING BRACKETS

MFL PROPOSE 15mm THK STEEL PLATE 310mm DEEP WELDED ACROSS WEB OF COLUMN. PLATE TO BE INSTALLED FLUSH FROM THE SLAB LEVEL AS SHOWN.

ALL COLUMNS & PLATE OUT'S TO BE PRE-DRILLED TO SUIT MFL BRACKETS REQUIREMENTS

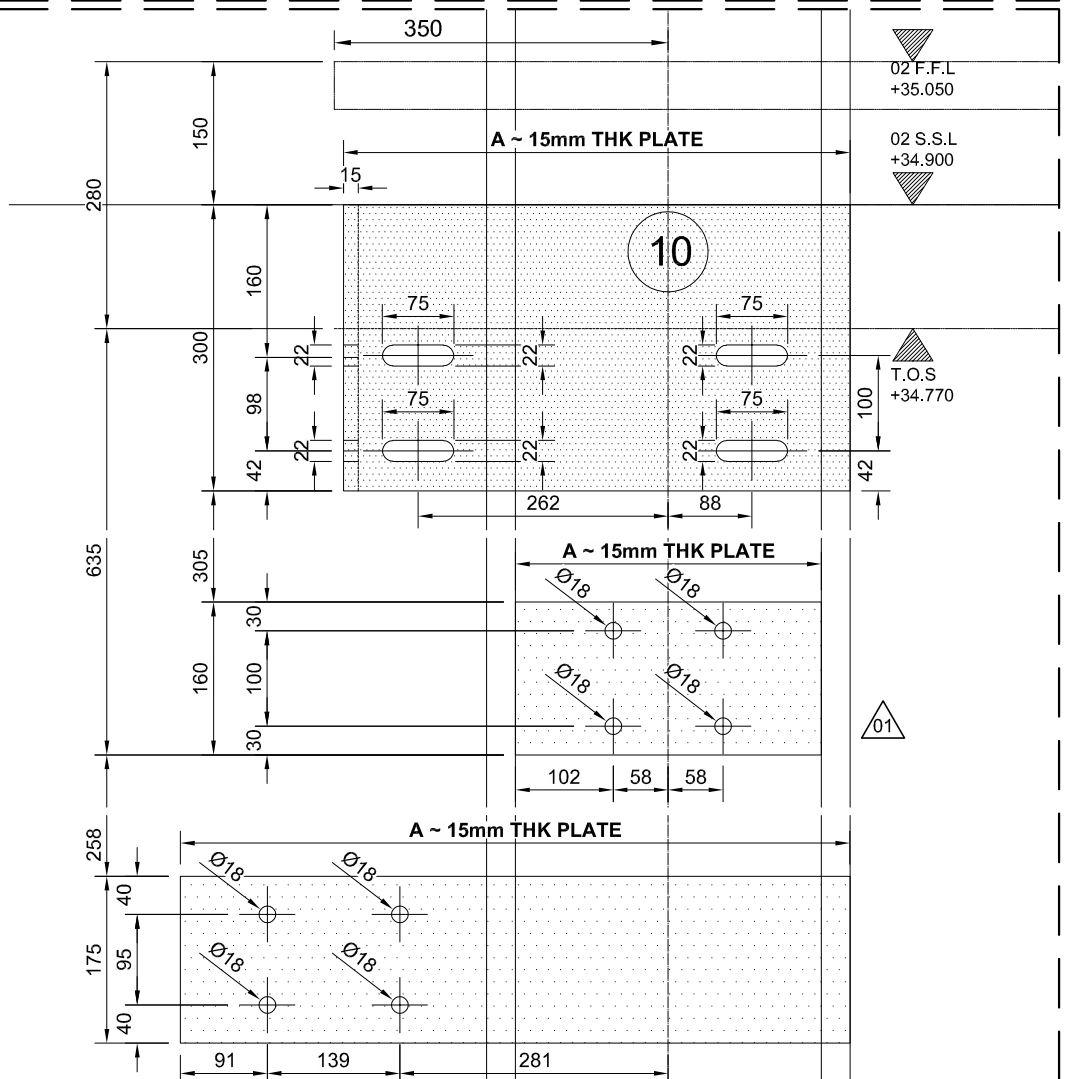
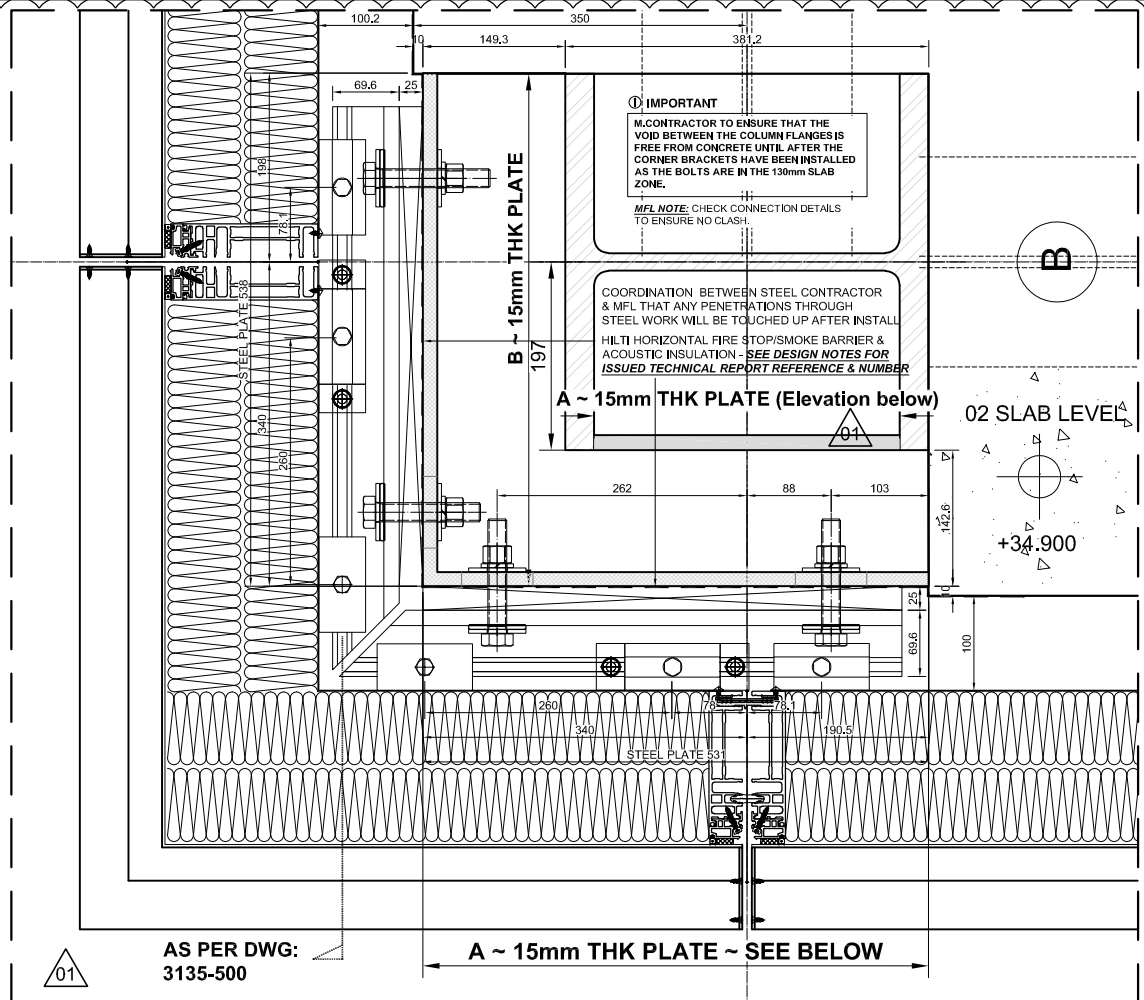
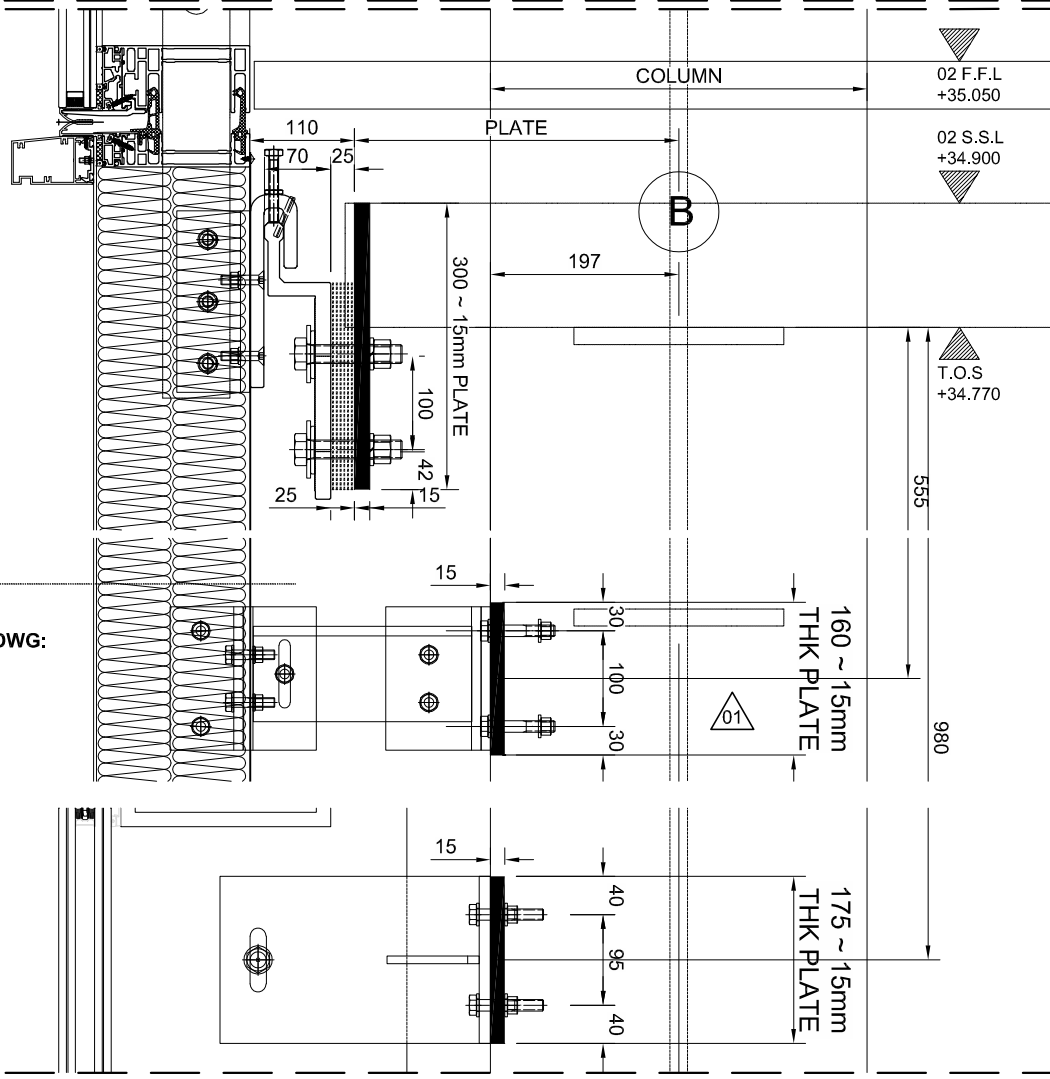
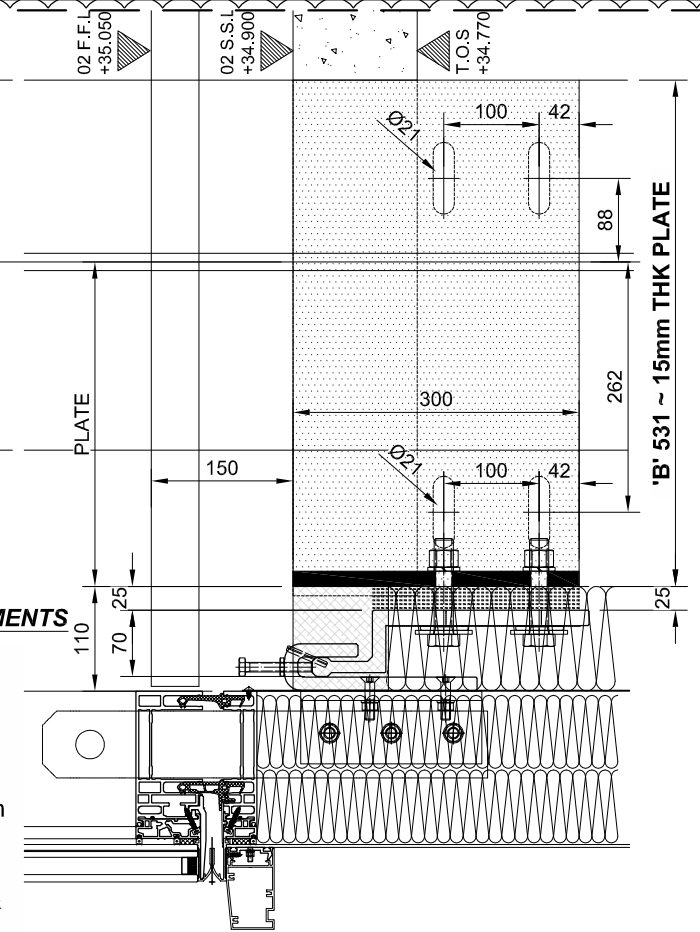
HORIZONTAL FIRE STOP & SMOKE BARRIER 110mm ROCKWOOL RW3 INSULATION FITTED UNDER 33% COMPRESSION INTO POSITION. HILTI CFS-SP-WB FIRESTOP SPRAY TO BE APPLIED ON TOP SURFACE OF INSULATION. SPRAY 3mm THICK WITH A MINIMUM OF 13mm OVERLAP UNTO ADJOINING STRUCTURES.

SEE DESIGN NOTES FOR ISSUED TECHNICAL REPORT REFERENCE & NUMBER

01 Column 'Plate Out' Details

Scale: 1:5@A3

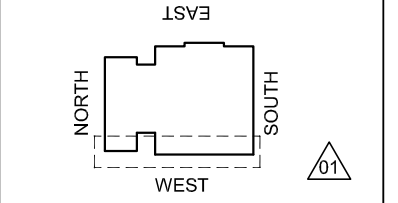
AS PER DWG: 3135-500



CDM Regulations

Hazards	Date Added	Date Mitigated	Risk Assessment Date
HEAVY GLASS - LOADS INDICATED	05/02/15		

HEALTH & SAFETY REVIEW REQUIRED IN ACCORDANCE WITH CDM REGULATIONS



KEY PLAN

DESIGN NOTES: Technical Report list:

DOCUMENT TITLE	Doc Number	CONJECT Number
Facade Design & Glass Risk Assessment	3135-TR003	KXC-S1-001-Y-21-TR003
Glass Technical report	3135-TR004	KXC-S1-001-Y-21-TR004
Technical data for HBI fire stop details	3135-TR005	KXC-S1-001-Y-21-TR005
Material data sheet report	3135-TR006	KXC-S1-001-Y-21-TR006
Door schedule & Operation Information	3135-TR007	KXC-S1-001-Y-21-TR007
Facade Airborne Acoustic report	3135-TR008	KXC-S1-001-Y-21-TR008
Facade Vertical & Horizontal Acoustic report	3135-TR009	KXC-S1-001-Y-21-TR009
Accommodation of structural movement	3135-TR012	KXC-S1-001-Y-21-TR012
Happen channel & Slab edge design	3135-TR013	KXC-S1-001-Y-21-TR013
Thermal Safety Check on Glass	3135-TR022	KXC-S1-001-Y-21-TR022

DO NOT SCALE : IF IN DOUBT ASK!

THIS DRAWING REMAINS THE PROPERTY OF McMULLEN FACADES LTD AND SHOULD NOT BE COPIED NOR ITS CONTENTS DIVULGED WITHOUT PRIOR CONSENT

Signed:	SPATTERSON	Internal Quality Check
Date:	04-05-2018	

No.	Intd	Date	Description	Date
002	DR	28/02/19	ALL COMMENTS RECEIVED - FOR CONSTRUCTION ISSUE	28/02/19
001	SP	20/07/18	ALL COMMENTS RECEIVED	20/07/18
000	SP	04-05-18	FIRST ISSUE	04-05-18

Contract:	KINGSCROSS S1
Architect:	MOSSISSIAN
Main Contractor:	BAM
Drawing:	WEST ELEV. GND FLOOR BAY STUDY DETAILS
Drawn By:	SPatterson
Date:	05/04/18
Scale:	1:5 @ A3
MFL No.:	3135-528
DMS Code:	KCX-S1-001-Y-3135-21-528
Revision:	002

DRAWING ISSUED FOR:	STATUS OF PREVIOUS RETURN
CONSTRUCTION	A (B) C -

McMullen Facades Limited
66 Lurgan Road, Moira,
Craigavon, Co. Armagh BT67 0LX
Tel: +44 (0) 28 9261 9688
Fax: +44 (0) 28 9261 9711
Email: design@mcmullenfacades.com