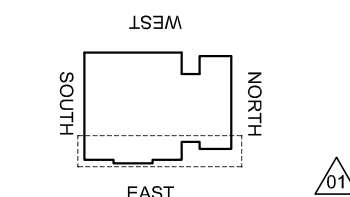


CDM Regulations

Hazards	Date Added	Date Revisited	Risk Assessment Date
HEAVY GLASS - LOADS INDICATED	05/02/15		



KEY PLAN

DESIGN NOTES: Technical Report list:

DOCUMENT TITLE	Doc Number	CONJECT Number
Facade Design & Glass Risk Assessment	3135-TR003	KXC-S1-001-Y-21-TR003
Glass Technical report	3135-TR004	KXC-S1-001-Y-21-TR004
Technical data for H&S fire stop details	3135-TR005	KXC-S1-001-Y-21-TR005
Material data sheet report	3135-TR006	KXC-S1-001-Y-21-TR006
Door schedule & Operation information	3135-TR007	KXC-S1-001-Y-21-TR007
Facade Airborne Acoustic report	3135-TR008	KXC-S1-001-Y-21-TR008
Facade Vertical & Horizontal Acoustic report	3135-TR009	KXC-S1-001-Y-21-TR009
Accommodation of structural movement	3135-TR012	KXC-S1-001-Y-21-TR012
Halfen channel & Slab edge design	3135-TR013	KXC-S1-001-Y-21-TR013
Thermal Safety Check on Glass	3135-TR022	KXC-S1-001-Y-21-TR022

DO NOT SCALE : IF IN DOUBT ASK!

THIS DRAWING REMAINS THE PROPERTY OF McMULLEN FACADES LTD AND SHOULD NOT BE COPIED NOR ITS CONTENTS DIVULGED WITHOUT PRIOR CONSENT

Signed:	S.Patterson	Internal Quality Check
Date:	05/06/2018	

No.	Intd	Intd	Date	Description	Date
002	DR	GB	01-04-19	ALL COMMENTS RECEIVED - FOR CONSTRUCTION ISSUE	01-04-19
001	DR	GB	14-01-19	SECOND ISSUE	14-01-19
000	MJ	MJ	05-06-18	FIRST ISSUE	05-06-18

Revision	Check	Description	Date

Contract: KINGSCROSS S1

Architect: MOSSISSIAN

Main Contractor: BAM

Drawing: EAST ELEVATION GND FLOOR BAY STUDY DETAILS

Drawn By: M.Jess Date: 05/06/2018

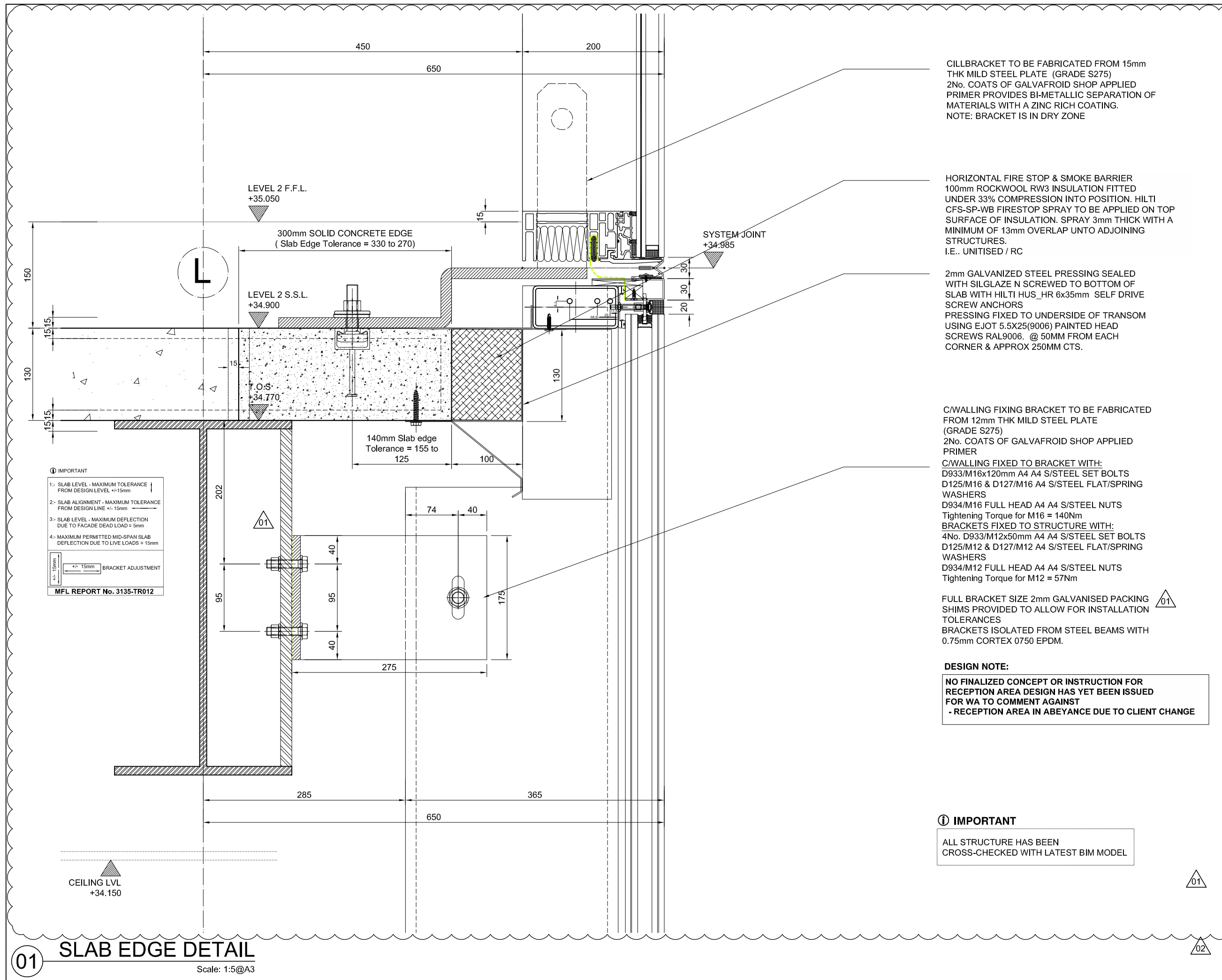
Scale: 1:5 @ A3 MFL No.: 3135-555

DMS Code: KXC-S1-001-Y-3135-21-555 Revision: 002

DRAWING ISSUED FOR: STATUS OF PREVIOUS RETURN

CONSTRUCTION A B © -

McMullen Facades Limited
66 Lurgan Road, Moira,
Craigavon, Co. Armagh BT67 0LX
Tel: +44 (0) 28 9261 9688
Fax: +44 (0) 28 9261 9711
Email: design@mcmmullenfacades.com



CILLBRACKET TO BE FABRICATED FROM 15mm THK MILD STEEL PLATE (GRADE S275)
2No. COATS OF GALVAFROID SHOP APPLIED PRIMER PROVIDES BI-METALLIC SEPARATION OF MATERIALS WITH A ZINC RICH COATING.
NOTE: BRACKET IS IN DRY ZONE

HORIZONTAL FIRE STOP & SMOKE BARRIER
100mm ROCKWOOL RW3 INSULATION FITTED UNDER 33% COMPRESSION INTO POSITION. HILTI CFS-SP-WB FIRESTOP SPRAY TO BE APPLIED ON TOP SURFACE OF INSULATION. SPRAY 3mm THICK WITH A MINIMUM OF 13mm OVERLAP UNTO ADJOINING STRUCTURES.
I.E.. UNITISED / RC

2mm GALVANIZED STEEL PRESSING SEALED WITH SILGLAZE N SCREWED TO BOTTOM OF SLAB WITH HILTI HUS_HR 6x35mm SELF DRIVE SCREW ANCHORS
PRESSING FIXED TO UNDERSIDE OF TRANSOM USING EJOT 5.5X25(9006) PAINTED HEAD SCREWS RAL9006. @ 50MM FROM EACH CORNER & APPROX 250MM CTS.

C/WALLING FIXING BRACKET TO BE FABRICATED FROM 12mm THK MILD STEEL PLATE (GRADE S275)
2No. COATS OF GALVAFROID SHOP APPLIED PRIMER
C/WALLING FIXED TO BRACKET WITH:
D933/M16x120mm A4 A4 S/STEEL SET BOLTS
D125/M16 & D127/M16 A4 S/STEEL FLAT/SPRING WASHERS
D934/M16 FULL HEAD A4 A4 S/STEEL NUTS
Tightening Torque for M16 = 140Nm
BRACKETS FIXED TO STRUCTURE WITH:
4No. D933/M12x50mm A4 A4 S/STEEL SET BOLTS
D125/M12 & D127/M12 A4 S/STEEL FLAT/SPRING WASHERS
D934/M12 FULL HEAD A4 A4 S/STEEL NUTS
Tightening Torque for M12 = 57Nm

FULL BRACKET SIZE 2mm GALVANISED PACKING SHIMS PROVIDED TO ALLOW FOR INSTALLATION TOLERANCES
BRACKETS ISOLATED FROM STEEL BEAMS WITH 0.75mm CORTEX 0750 EPDM.

DESIGN NOTE:
NO FINALIZED CONCEPT OR INSTRUCTION FOR RECEPTION AREA DESIGN HAS YET BEEN ISSUED FOR WA TO COMMENT AGAINST
- RECEPTION AREA IN ABEYANCE DUE TO CLIENT CHANGE

IMPORTANT
ALL STRUCTURE HAS BEEN CROSS-CHECKED WITH LATEST BIM MODEL

- IMPORTANT**
- 1- SLAB LEVEL - MAXIMUM TOLERANCE FROM DESIGN LEVEL +/- 15mm
 - 2- SLAB ALIGNMENT - MAXIMUM TOLERANCE FROM DESIGN LINE +/- 15mm
 - 3- SLAB LEVEL - MAXIMUM DEFLECTION DUE TO FACADE DEAD LOAD = 5mm
 - 4- MAXIMUM PERMITTED MID-SPAN SLAB DEFLECTION DUE TO LIVE LOADS = 15mm
- BRACKET ADJUSTMENT
+/- 15mm
- MFL REPORT No. 3135-TR012

01 **SLAB EDGE DETAIL**
Scale: 1:5@A3