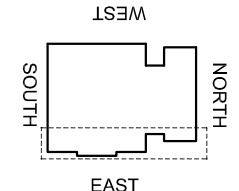


**CDM Regulations**

Hazards	Date Added	Date Mitigated	Risk Assessment Date
HEAVY GLASS - LOADS INDICATED	05/02/15		



**KEY PLAN**

**DESIGN NOTES: Technical Report list:**

DOCUMENT TITLE	Doc Number	CONJECT Number
Facade Design & Glass Risk Assessment	3135-TR003	KXC-S1-001-Y-21-TR003
Glass Technical report	3135-TR004	KXC-S1-001-Y-21-TR004
Technical data for HBI fire stop details	3135-TR005	KXC-S1-001-Y-21-TR005
Material data sheet report	3135-TR006	KXC-S1-001-Y-21-TR006
Door schedule & Operation Information	3135-TR007	KXC-S1-001-Y-21-TR007
Facade Airborne Acoustic report	3135-TR008	KXC-S1-001-Y-21-TR008
Facade Vertical & Horizontal Acoustic report	3135-TR009	KXC-S1-001-Y-21-TR009
Accommodation of structural movement	3135-TR012	KXC-S1-001-Y-21-TR012
Hallen channel & Slab edge design	3135-TR013	KXC-S1-001-Y-21-TR013
Thermal Safety Check on Glass	3135-TR022	KXC-S1-001-Y-21-TR022

**DO NOT SCALE : IF IN DOUBT ASK!**

© THIS DRAWING REMAINS THE PROPERTY OF McMULLEN FACADES LTD AND SHOULD NOT BE COPIED NOR ITS CONTENTS DIVULGED WITHOUT PRIOR CONSENT

Signed:	S.Patterson	Internal Quality Check
Date:	05/06/2018	

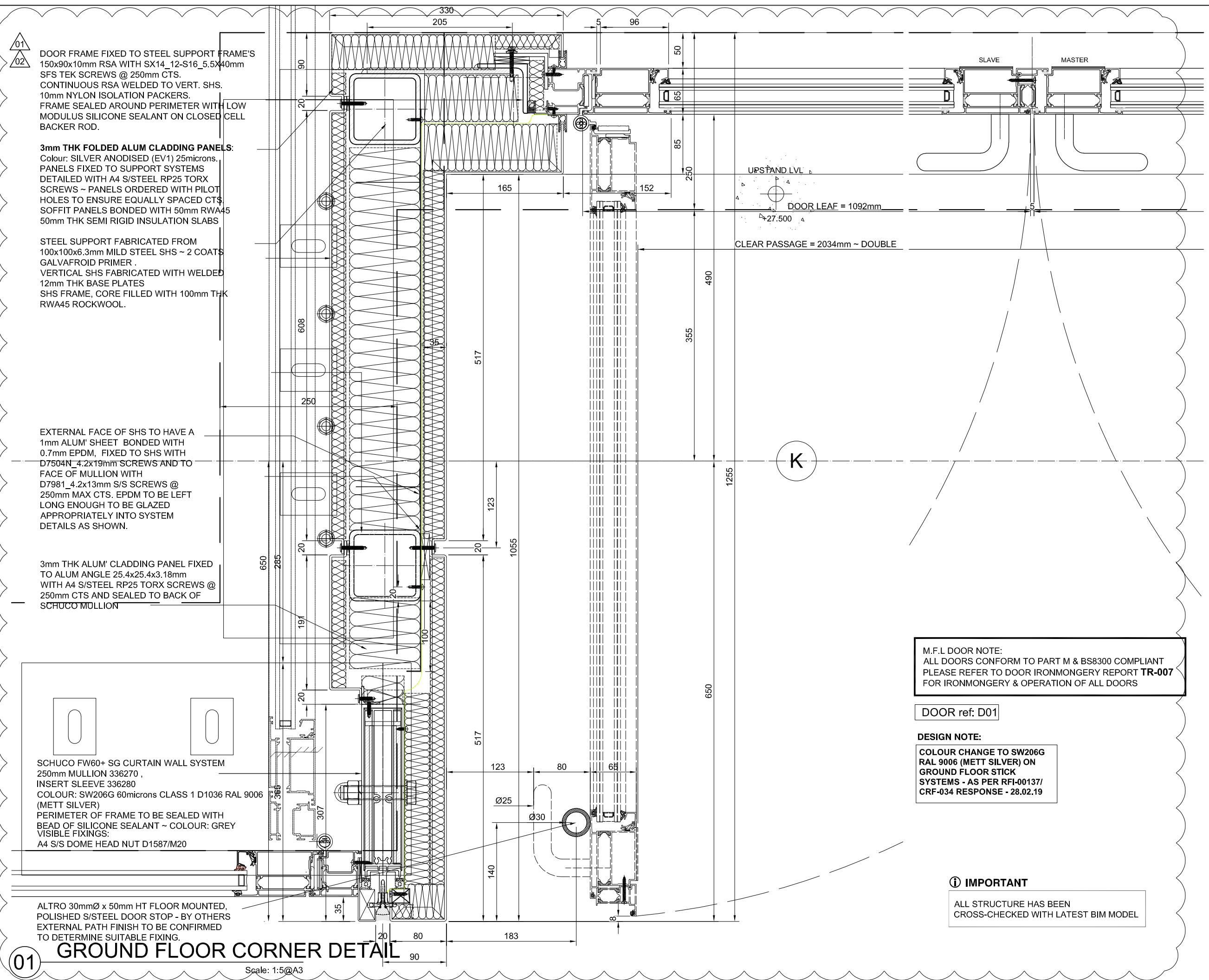
No.	Intd	Date	Description	Date
002	DR	07-03-19	ALL COMMENTS RECEIVED - FOR CONSTRUCTION ISSUE	07-03-19
001	DR	14-01-19	SECOND ISSUE	14-01-19
000	MJ	05-06-18	FIRST ISSUE	05-06-18

Contract:	KINGSCROSS S1
Architect:	MOSSISSIAN
Main Contractor:	BAM
Drawing:	EAST ELEVATION GND FLOOR BAY STUDY DETAILS
Drawn By:	M.Jess
Date:	05/06/2018
Scale:	1:5 @ A3
MFL No.:	3135-558
DMS Code:	KXC-S1-001-Y-3135-21-558
Revision:	002

DRAWING ISSUED FOR:	STATUS OF PREVIOUS RETURN
---------------------	---------------------------

**CONSTRUCTION** A B © -

McMullen Facades Limited  
66 Lurgan Road, Moira,  
Craigavon, Co. Armagh BT67 0LX  
Tel: +44 (0) 28 9261 9688  
Fax: +44 (0) 28 9261 9711  
Email: design@mcmullenfacades.com



01  
02  
DOOR FRAME FIXED TO STEEL SUPPORT FRAME'S 150x90x10mm RSA WITH SX14\_12-S16\_5.5x40mm SFS TEK SCREWS @ 250mm CTS. CONTINUOUS RSA WELDED TO VERT. SHS. 10mm NYLON ISOLATION PACKERS. FRAME SEALED AROUND PERIMETER WITH LOW MODULUS SILICONE SEALANT ON CLOSED CELL BACKER ROD.

**3mm THK FOLDED ALUM CLADDING PANELS:**  
Colour: SILVER ANODISED (EV1) 25microns. PANELS FIXED TO SUPPORT SYSTEMS DETAILED WITH A4 S/STEEL RP25 TORX SCREWS ~ PANELS ORDERED WITH PILOT HOLES TO ENSURE EQUALLY SPACED CTS. SOFFIT PANELS BONDED WITH 50mm RWA45 50mm THK SEMI RIGID INSULATION SLABS

STEEL SUPPORT FABRICATED FROM 100x100x6.3mm MILD STEEL SHS ~ 2 COATS GALVAFROID PRIMER. VERTICAL SHS FABRICATED WITH WELDED 12mm THK BASE PLATES SHS FRAME, CORE FILLED WITH 100mm THK RWA45 ROCKWOOL.

EXTERNAL FACE OF SHS TO HAVE A 1mm ALUM SHEET BONDED WITH 0.7mm EPDM, FIXED TO SHS WITH D7504N\_4.2x19mm S/S SCREWS AND TO FACE OF MULLION WITH D7981\_4.2x13mm S/S SCREWS @ 250mm MAX CTS. EPDM TO BE LEFT LONG ENOUGH TO BE GLAZED APPROPRIATELY INTO SYSTEM DETAILS AS SHOWN.

3mm THK ALUM CLADDING PANEL FIXED TO ALUM ANGLE 25.4x25.4x3.18mm WITH A4 S/STEEL RP25 TORX SCREWS @ 250mm CTS AND SEALED TO BACK OF SCHUCO MULLION

SCHUCO FW60+ SG CURTAIN WALL SYSTEM  
250mm MULLION 336270 ,  
INSERT SLEEVE 336280  
COLOUR: SW206G 60microns CLASS 1 D1036 RAL 9006 (METT SILVER)  
PERIMETER OF FRAME TO BE SEALED WITH BEAD OF SILICONE SEALANT ~ COLOUR: GREY VISIBLE FIXINGS:  
A4 S/S DOME HEAD NUT D1587/M20

ALTRO 30mmØ x 50mm HT FLOOR MOUNTED, POLISHED S/STEEL DOOR STOP - BY OTHERS EXTERNAL PATH FINISH TO BE CONFIRMED TO DETERMINE SUITABLE FIXING.

**GROUND FLOOR CORNER DETAIL**

Scale: 1:5@A3

**M.F.L DOOR NOTE:**  
ALL DOORS CONFORM TO PART M & BS8300 COMPLIANT PLEASE REFER TO DOOR IRONMONGERY REPORT **TR-007** FOR IRONMONGERY & OPERATION OF ALL DOORS

DOOR ref: D01

**DESIGN NOTE:**  
COLOUR CHANGE TO SW206G RAL 9006 (METT SILVER) ON GROUND FLOOR STICK SYSTEMS - AS PER RFI-00137/ CRF-034 RESPONSE - 28.02.19

**IMPORTANT**

ALL STRUCTURE HAS BEEN CROSS-CHECKED WITH LATEST BIM MODEL