

02

01

SCHUCO FW60+ SG CURTAIN WALL SYSTEM
250mm MULLION 336270
INSERT SLEEVE 336280
255mm TRANSOM 493690
COLOUR: SL804G 60microns CLASS 1 D1036
(RAL 7004)

PERIMETER OF FRAME TO BE SEALED
WITH BEAD OF SILICONE SEALANT
~ Colour: GREY

C/WALLING GLASS -
(UNITS AS PER MA AGREED STATEMENT)

K

0.9mm P.P.C GALVANIZED STEEL BACKING SHEET FIXED
AROUND SYSTEM WITH D7981/4.2x13mm SCREWS @
50mm FROM EACH CORNER & APPROX 250mm CTS.

3mm P.P.C ALUM OUTER PANEL FIXED WITH D7981/4.2x16mm
SCREWS @ 50mm FROM EACH CORNER & APPROX 250mm
CTS.
Colour: SILVER ANODISED 25microns

SECTION X

CORNER DETAIL:
CORNER TRANSOM TO HAVE 6mm BUILT UP S/S CLEAT BOLTED TO
TRANSOM WITH 2Nos D931/M10x120 A4-70 BOLTS. CLEAT FIXED TO
TRANSOM WITH 2Nos D7991/M8x80 A4-70 S/S CSK SCREW, M8 CSK
WASHER (KANBAN 205579), D127/M8 SPRING WASHER/D934/M10
HEX NUT.

ALUMINIUM RHS (200x80x6mm), POSITIONED AT 45 DEGREES,
SUPPORTED AT THE CORNERS WITH THE USE OF 2Nos 6mm
BUILT-UP STAINLESS STEEL CLEATS. FIXED TO RHS WITH 2Nos
D931/M10x120 A4-70 BOLTS, D125/127 FLAT/SPRING WASHERS, D934
FULL HEX-NUT.

3mm ALUMINUM COMPRESSED FLASHING SCREW FIXED TO FRONT OF
ALUM RHS 200x80x6mm (GRADE 6060-T6) AT 250mm MAX CENTRES
AND BONDED TO GLASS WITH SITE APPLIED SEALANT USING DOW
CORNING RECOMMENDATIONS: 2No. 16x6mm BITE USING DOWSIL
993

45x45x3mm SILVER ANODISED EDGE ANGLE
1No. D7982/4.2x50mm SECURITY SCREW PER LENGTH
GLASS SEALED AROUND ANGLE WITH DOWSIL 791
& CLOSED CELL BACKER ROD.

01

GROUND FLOOR CORNER DETAIL

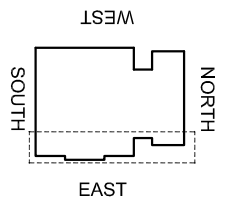
Scale: 1:5@A3

08

JRL
McMULLEN

CDM Regulations

| Hazards | Date Added | Date Mitigated | Risk Assessment Date |
|-------------------------------|------------|----------------|----------------------|
| HEAVY GLASS ~ LOADS INDICATED | 05/02/15 | | |



KEY PLAN

DESIGN NOTES: Technical Report list:

| DOCUMENT TITLE | Doc Number | CONJECT Number |
|--|------------|-----------------------|
| Facade Design & Glass Risk Assessment | 3135-TR003 | KXC-S1-001-Y-21-TR003 |
| Glass Technical report | 3135-TR004 | KXC-S1-001-Y-21-TR004 |
| Technical data for H&S fire stop details | 3135-TR005 | KXC-S1-001-Y-21-TR005 |
| Material data sheet report | 3135-TR006 | KXC-S1-001-Y-21-TR006 |
| Door schedule & Operation Information | 3135-TR007 | KXC-S1-001-Y-21-TR007 |
| Facade Airborne Acoustic report | 3135-TR008 | KXC-S1-001-Y-21-TR008 |
| Facade Vertical & Horizontal Acoustic report | 3135-TR009 | KXC-S1-001-Y-21-TR009 |
| Accommodation of structural movement | 3135-TR012 | KXC-S1-001-Y-21-TR012 |
| Halfen channel & Slab edge design | 3135-TR013 | KXC-S1-001-Y-21-TR013 |
| Thermal Safety Check on Glass | 3135-TR022 | KXC-S1-001-Y-21-TR022 |

DO NOT SCALE : IF IN DOUBT ASK!



THIS DRAWING REMAINS THE PROPERTY
OF McMULLEN FACADES LTD AND SHOULD
NOT BE COPIED NOR ITS CONTENTS
DIVULGED WITHOUT PRIOR CONSENT

| | | |
|---------|-------------|---------------------------|
| Signed: | S.Patterson | Internal Quality Check |
| Date: | 05/06/2018 | |

| No. | Intd | Intd | Date | | |
|----------|-------|-------------|----------|---|----------|
| 002 | DR | GB | 26-03-19 | ALL COMMENTS RECEIVED - FOR CONSTRUCTION ISSUE | 26-03-19 |
| 001 | DR | GB | 14-01-19 | SECOND ISSUE | 14-01-19 |
| 000 | MJ | MJ | 05-06-18 | FIRST ISSUE | 05-06-18 |
| Revision | Check | Description | Date | | |

| | | | |
|--------------------------|--|---|-----------|
| Contract: | | KINGSCROSS S1 | |
| Architect: | | MOSSSESIAN | |
| Main Contractor: | | BAM | |
| Drawing: | | EAST ELEVATION GND FLOOR BAY STUDY DETAILS | |
| Drawn By: | | Date: | |
| M.Jess | | 05/06/2018 | |
| Scale: | | MFL No.: | |
| 1:5 @ A3 | | 3135-559 | |
| DMS Code: | | | Revision: |
| KXC-S1-001-Y-3135-21-559 | | | 002 |

| | |
|---------------------|------------------------------|
| DRAWING ISSUED FOR: | STATUS OF PREVIOUS RETURN |
|---------------------|------------------------------|

| | |
|--------------|---------|
| CONSTRUCTION | A B © - |
|--------------|---------|

McMullen Facades Limited
66 Lurgan Road, Moira,
Craigavon, Co. Armagh BT67 0LX
Tel: +44 (0) 28 9261 9688
Fax: +44 (0) 28 9261 9711
Email: design@mcmullenfacades.com