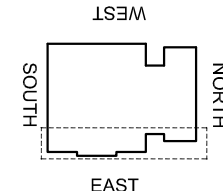


CDM Regulations

Hazards	Date Added	Date Mitigated	Risk Assessment Date
HEAVY GLASS - LOADS INDICATED	05/02/15		



KEY PLAN

DESIGN NOTES: Technical Report list:

DOCUMENT TITLE	Doc Number	CONJECT Number
Facade Design & Glass Risk Assessment	3135-TR003	KXC-S1-001-Y-21-TR003
Glass Technical report	3135-TR004	KXC-S1-001-Y-21-TR004
Technical data for HBI fire stop details	3135-TR005	KXC-S1-001-Y-21-TR005
Material data sheet report	3135-TR006	KXC-S1-001-Y-21-TR006
Door schedule & Operation Information	3135-TR007	KXC-S1-001-Y-21-TR007
Facade Airborne Acoustic report	3135-TR008	KXC-S1-001-Y-21-TR008
Facade Vertical & Horizontal Acoustic report	3135-TR009	KXC-S1-001-Y-21-TR009
Accommodation of structural movement	3135-TR012	KXC-S1-001-Y-21-TR012
Halfen channel & Slab edge design	3135-TR013	KXC-S1-001-Y-21-TR013
Thermal Safety Check on Glass	3135-TR022	KXC-S1-001-Y-21-TR022

DO NOT SCALE : IF IN DOUBT ASK!

© THIS DRAWING REMAINS THE PROPERTY OF McMULLEN FACADES LTD AND SHOULD NOT BE COPIED NOR ITS CONTENTS DIVULGED WITHOUT PRIOR CONSENT

Signed: S.Patterson
Date: 05/06/2018
Internal Quality Check

No.	Intd	Date	Description	Date	
002	DR	GB	04-03-19	ALL COMMENTS RECEIVED - FOR CONSTRUCTION ISSUE	04-03-19
001	DR	GB	14-01-19	SECOND ISSUE	14-01-19
000	MJ	MJ	05-06-18	FIRST ISSUE	05-06-18

Revision: Check Description Date

Contract: KINGSCROSS S1

Architect: MOSSISSIAN

Main Contractor: BAM

Drawing: EAST ELEVATION GND FLOOR BAY STUDY DETAILS

Drawn By: M.Jess Date: 05/06/2018

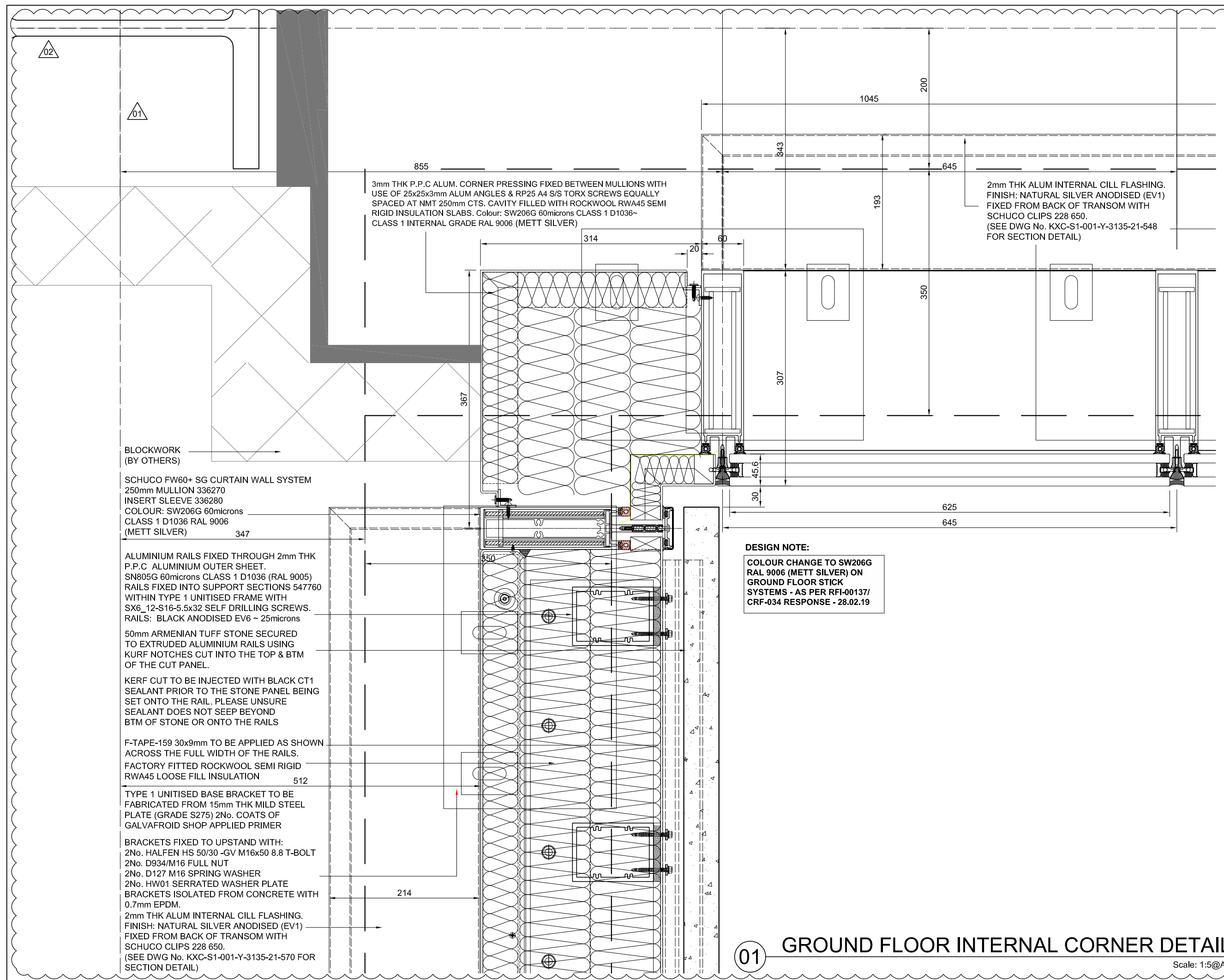
Scale: 1:5 @ A3 MFL No.: 3135-561

DMS Code: KXC-S1-001-Y-3135-21-561 Revision: 002

DRAWING ISSUED FOR: STATUS OF PREVIOUS RETURN

CONSTRUCTION A B © -

McMullen Facades Limited
66 Lurgan Road, Moira,
Craigavon, Co. Armagh BT67 0LX
Tel: +44 (0) 28 9261 9688
Fax: +44 (0) 28 9261 9711
Email: design@mcmullenfacades.com



3mm THK P.P.C ALUM. CORNER PRESSING FIXED BETWEEN MULLIONS WITH USE OF 25x25x3mm ALUM ANGLES & RP25 A4 S/S TORX SCREWS EQUALLY SPACED AT NMT 250mm CTS. CAVITY FILLED WITH ROCKWOOL RWA45 SEMI RIGID INSULATION SLABS. Colour: SW206G 60microns CLASS 1 D1036-CLASS 1 INTERNAL GRADE RAL 9006 (METT SILVER)

2mm THK ALUM INTERNAL CILL FLASHING. FINISH: NATURAL SILVER ANODISED (EV1) FIXED FROM BACK OF TRANSOM WITH SCHUCO CLIPS 228 650. (SEE DWG No. KXC-S1-001-Y-3135-21-548 FOR SECTION DETAIL)

DESIGN NOTE:
COLOUR CHANGE TO SW206G RAL 9006 (METT SILVER) ON GROUND FLOOR STICK SYSTEMS - AS PER RFI-00137/ CRF-034 RESPONSE - 28.02.19

BLOCKWORK (BY OTHERS)
SCHUCO FW60+ SG CURTAIN WALL SYSTEM
250mm MULLION 336270
INSERT SLEEVE 336280
COLOUR: SW206G 60microns
CLASS 1 D1036 RAL 9006 (METT SILVER)

ALUMINIUM RAILS FIXED THROUGH 2mm THK P.P.C ALUMINIUM OUTER SHEET. SN805G 60microns CLASS 1 D1036 (RAL 9005) RAILS FIXED INTO SUPPORT SECTIONS 547760 WITHIN TYPE 1 UNITISED FRAME WITH SX6_12-S16-5.5x32 SELF DRILLING SCREWS. RAILS: BLACK ANODISED EV6 ~ 25microns
50mm ARMENIAN TUFF STONE SECURED TO EXTRUDED ALUMINIUM RAILS USING KURF NOTCHES CUT INTO THE TOP & BTM OF THE CUT PANEL.
KERF CUT TO BE INJECTED WITH BLACK CT1 SEALANT PRIOR TO THE STONE PANEL BEING SET ONTO THE RAIL. PLEASE UNSURE SEALANT DOES NOT SEEP BEYOND BTM OF STONE OR ONTO THE RAILS

F-TAPE-159 30x9mm TO BE APPLIED AS SHOWN ACROSS THE FULL WIDTH OF THE RAILS.
FACTORY FITTED ROCKWOOL SEMI RIGID RWA45 LOOSE FILL INSULATION

TYPE 1 UNITISED BASE BRACKET TO BE FABRICATED FROM 15mm THK MILD STEEL PLATE (GRADE S275) 2No. COATS OF GALVAFROID SHOP APPLIED PRIMER

BRACKETS FIXED TO UPSTAND WITH:
2No. HALFEN HS 50/30 -GV M16x50 8.8 T-BOLT
2No. D934/M16 FULL NUT
2No. D127 M16 SPRING WASHER
2No. HW01 SERRATED WASHER PLATE
BRACKETS ISOLATED FROM CONCRETE WITH 0.7mm EPDM.
2mm THK ALUM INTERNAL CILL FLASHING. FINISH: NATURAL SILVER ANODISED (EV1) FIXED FROM BACK OF TRANSOM WITH SCHUCO CLIPS 228 650. (SEE DWG No. KXC-S1-001-Y-3135-21-570 FOR SECTION DETAIL)

01 GROUND FLOOR INTERNAL CORNER DETAIL Scale: 1:5@A3