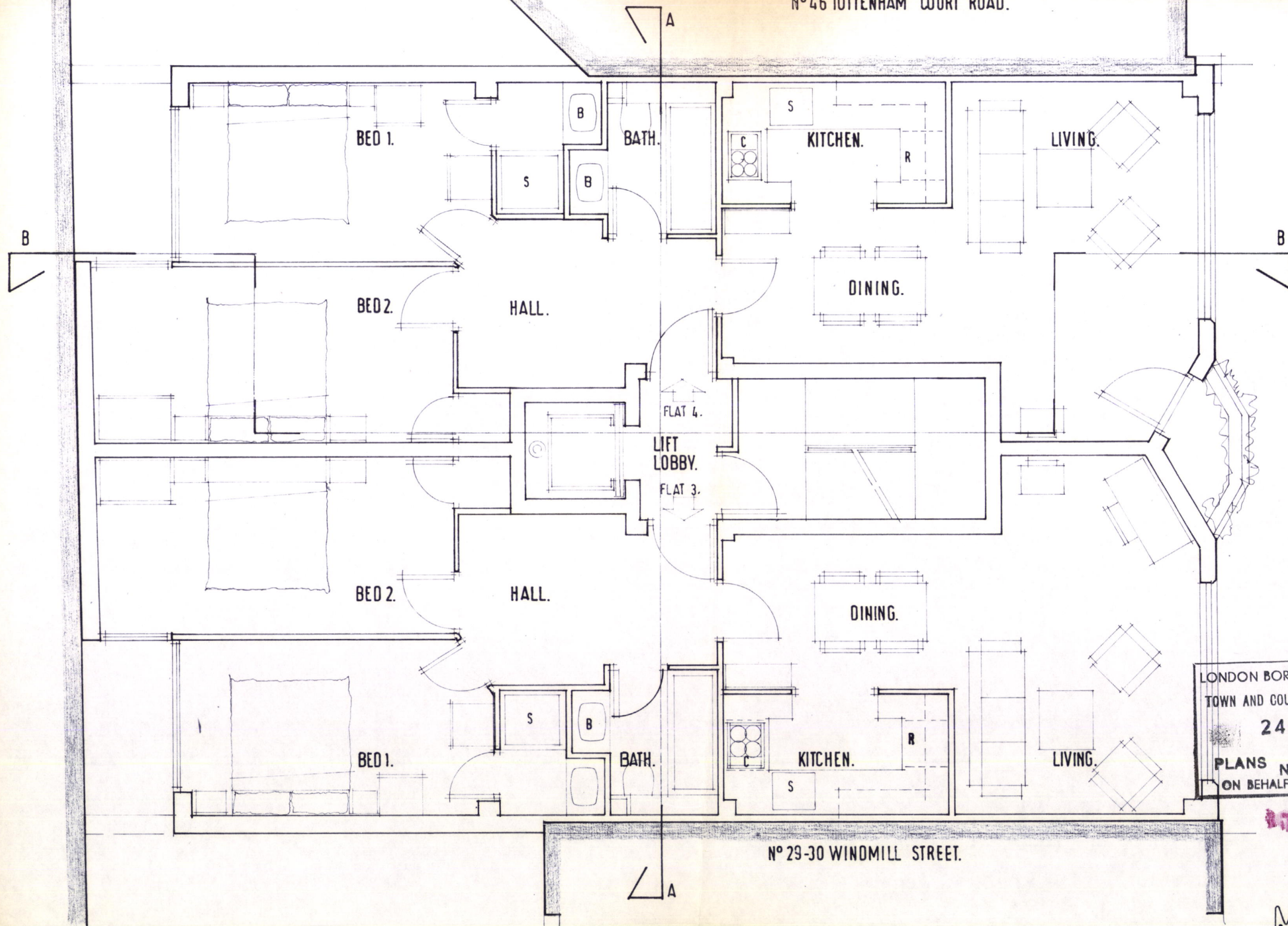


Nº 46 TOTTENHAM COURT ROAD.



WINDMILL STREET.

Nº 29-30 WINDMILL STREET.

SECOND FLOOR.

LONDON BOROUGH OF CAMDEN
 TOWN AND COUNTRY PLANNING ACTS
 24 MAY 1988
 APPROVED
 PLANS ~~NOT APPROVED~~
 ON BEHALF OF THE COUNCIL

RTP 8800033

SCALE 1:50

MHK.
SHEET 2.11.