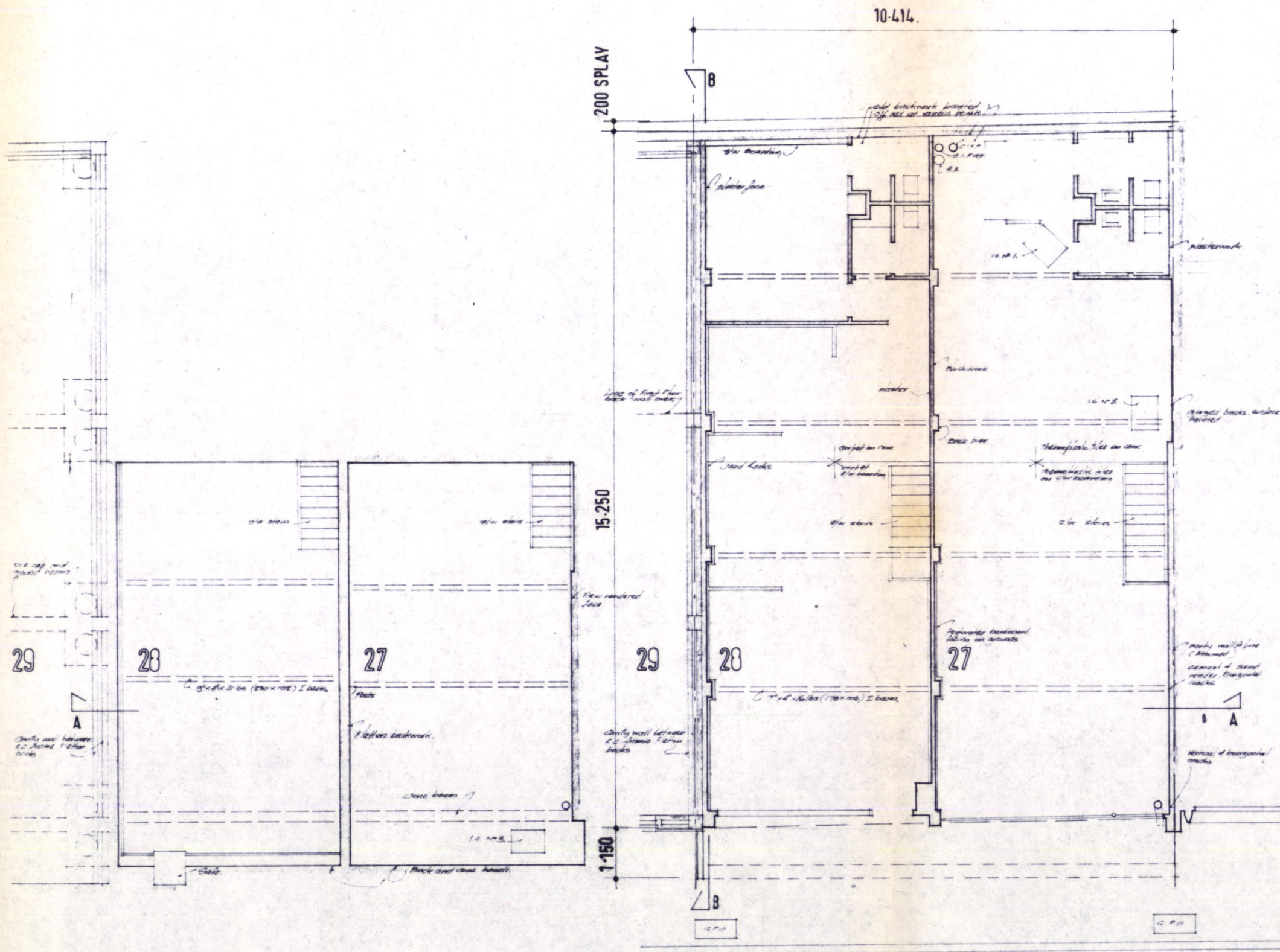


NOTES
 DIMENSIONS RELATING TO CONSTRUCTION ALREADY BUILT ON SITE MUST BE CHECKED BY THE CONTRACTOR



BASEMENT FLOOR PLAN.

GROUND FLOOR PLAN.

GROSS AREA 171.837m² (1850 sq. ft.)
 LONDON BOROUGH OF CAMDEN
 TOWN AND COUNTRY PLANNING ACTS
 24 MAY 1988
 APPROVED
 PLANS NOT APPROVED
 ON BEHALF OF THE COUNCIL

177P8800033
 MKK.
 SHEET 22.

MHK
 MACINTOSH HAINES & KENNEDY
 48 High Street
 Croydon
 Surrey
 CR0 1YB
 Telephone 01886 3931

REVISIONS

Rev.	Detail	Date	Int.

27-28 WINDMILL ST.

TITLE
 SURVEY: BASEMENT
 & GROUND FLOORS

SCALE
 REDUCED FROM 1:50 NOW 1:100
 DATE 6.10.1987 DRAWN

MHK