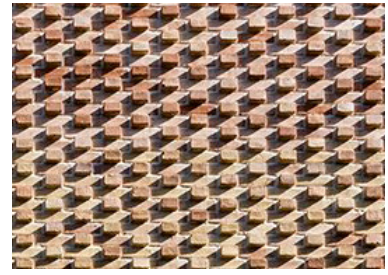


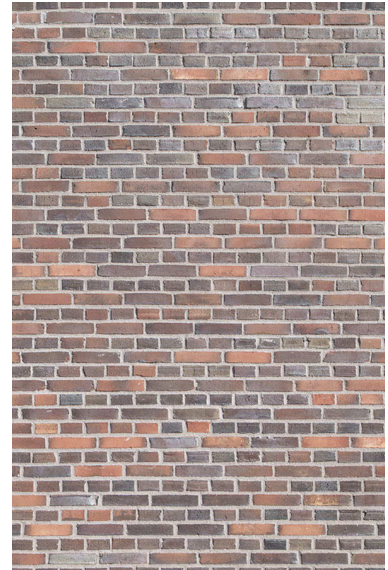
01

Materials Key

- | | |
|--|---|
| 01 Red, blue, brown multi brick in English cross bond - Light grey mortar | 05 Structural pigmented reconstituted stone |
| 02 Projecting red, blue, brown multi brick in Flemish bond - Light grey mortar | 06 'Champagne' anodised aluminium balusters |
| 03 'Champagne' anodised aluminium cladding panels | 07 'Champagne' anodised aluminium window frames |
| 04 Pigmented reconstituted stone cladding | |



02



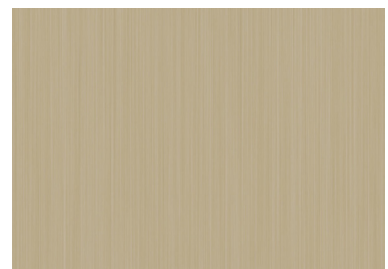
03



04



05



06

- 01 Elevation extract showing materials key
- 02 Example of the proposed projecting brickwork. Bricks to be red, blue, brown multi brick in Flemish bond with a light grey mortar to match the brickwork generally
- 03 Red, blue, brown multi brick in English cross bond - Light grey mortar
- 04 Pigmented reconstituted stone cladding and structural / framing elements to match
- 05 Fluted stone detailing to entrance wall
- 06 'Champagne' anodised aluminium for all metalwork including window frames, cills, balustrades and copings.
- 07 Multi-brick Flemish bond in a coordinated pattern with light grey mortar to 1st floor panels between windows on the North Elevation
- 08 Materials precedent study
- 09 Extract from the East Elevation showing the material composition.

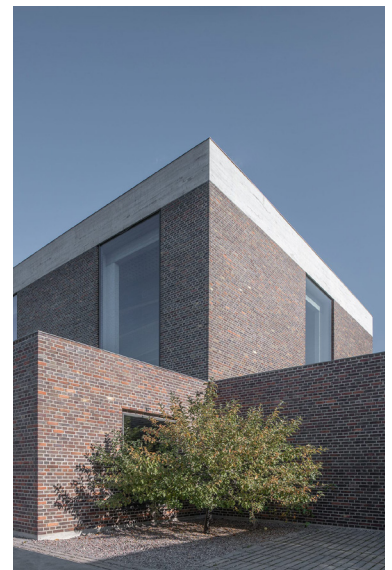
AESTHETICS

The appearance of the house has developed with the aim to create a sophisticated and contemporary Architecture, that enhances and compliments the local character of the area. The proposed form and material palette has been chosen to sit confidently between the blue engineering brick of the Schreiber house and the red brick buildings of Templewood Avenue, whilst being sympathetic to them in both scale and texture. The materiality of the new building works in conjunction with the building forms, creating a considered and unified appearance that celebrates an honest massing and striking openings. A combination of Red, Blue and Brown multi brick and Reconstituted Stone is proposed as the principle materials, situating the new building comfortably between its neighbours while allowing it an individual character.

The buildings entrance hall and oriel window are detailed with projecting brickwork, giving it a striking presence upon arrival. The North elevation is detailed with patterned spandrel panels between bedrooms and sliding screens in the master suite to give a dynamic vertical articulation. The second floor master suite takes on a contrasting language of the thin reconstituted stone colonnade with set back glazing, presenting the appearance of a lightweight structure sitting on top of the heavy base below. Likewise the master suite terrace is formed of deep vertical fins, creating an external space which is private while appearing lightweight and unimposing from the street.



07



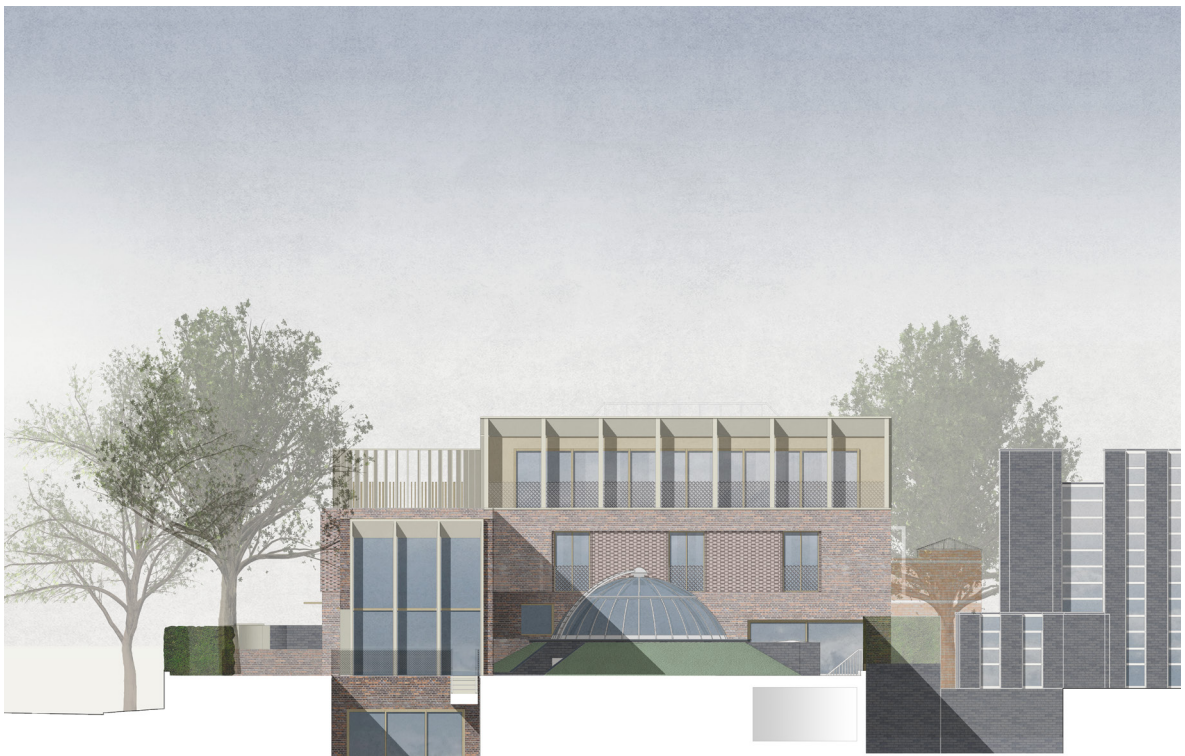
08



09



EAST ELEVATION



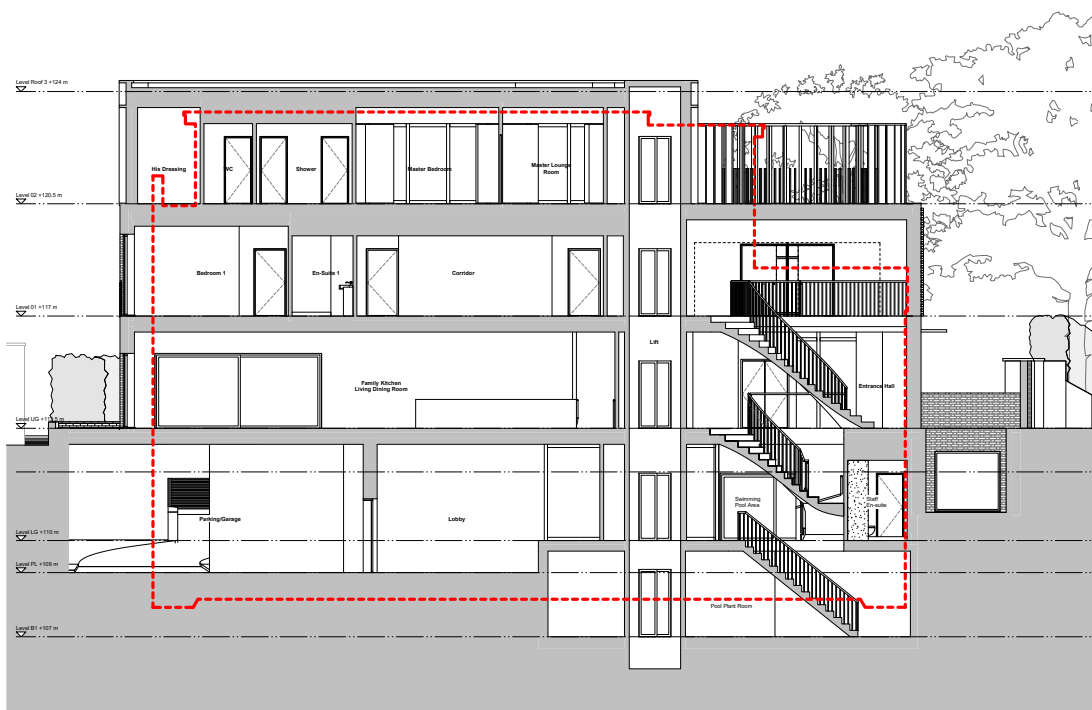
NORTH ELEVATION

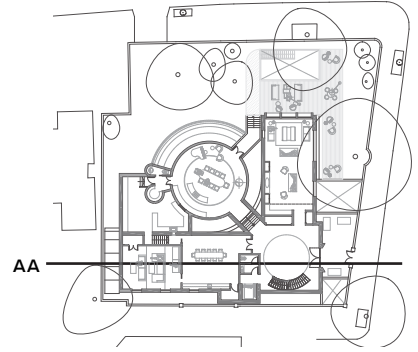


WEST ELEVATION



SOUTH ELEVATION





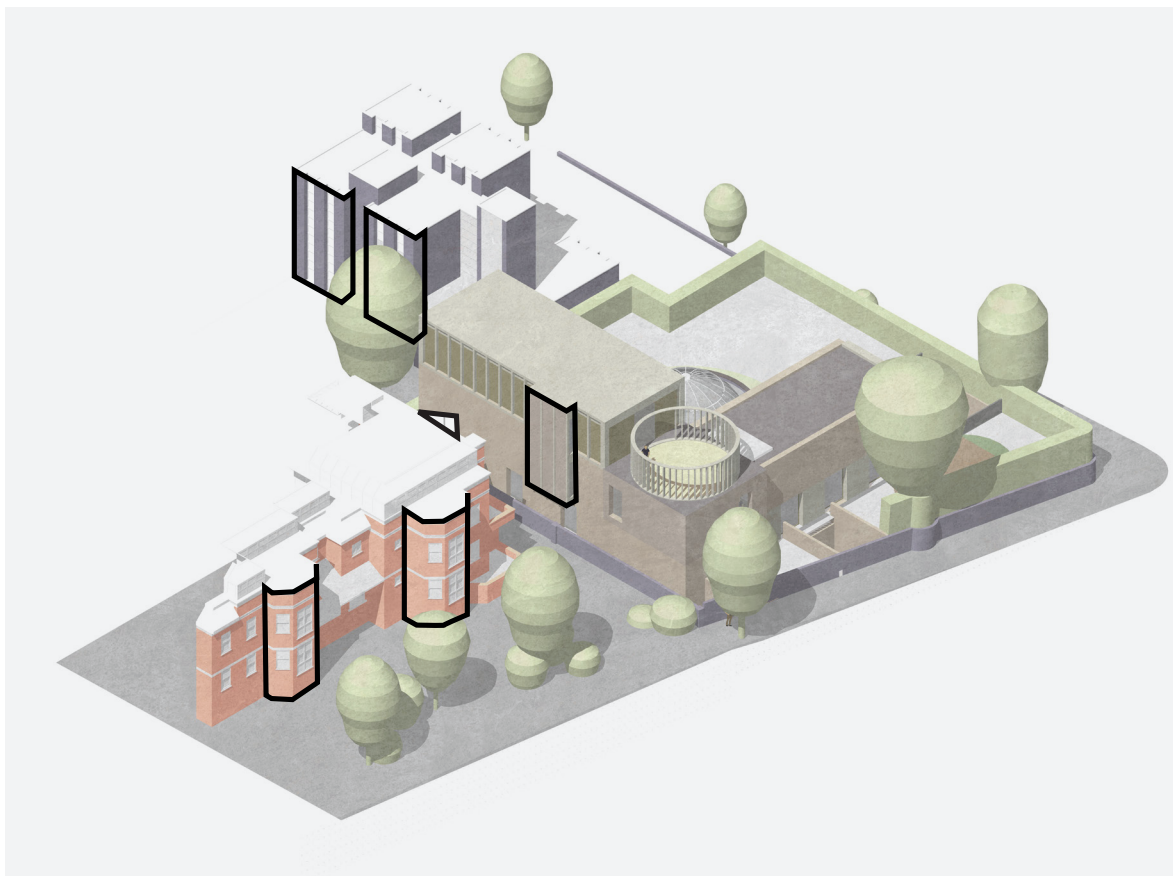
BASEMENT IMPACT

Camden Councils commentary following the previous pre-application (August 2019) states that:

'The proposed basement development would largely comply with the requirements of policy A5 aside from the extra basement level for the plant room. It is recognised that the site levels vary significantly from the north the south; however, this lower level would be double storey when measured from the adjacent ground level and it is recommended that it is removed from future proposals in order to comply with point f above.'

We are proposing that the sub-basement is only used for swimming pool plant, and as such will be compliant with planning policy. The pool plant and lower ground floor above have been reduced in height, meaning that excavations are now broadly the same as the consented scheme. Please see the diagram opposite depicting this. We have introduced other plant areas in the existing space between the Schreiber pool and the new building to accommodate the necessary mechanical plant. This new plant area will be no lower than those same areas within the consented scheme.

We intend to explore this further with regards to the extant consent.



01



02



03

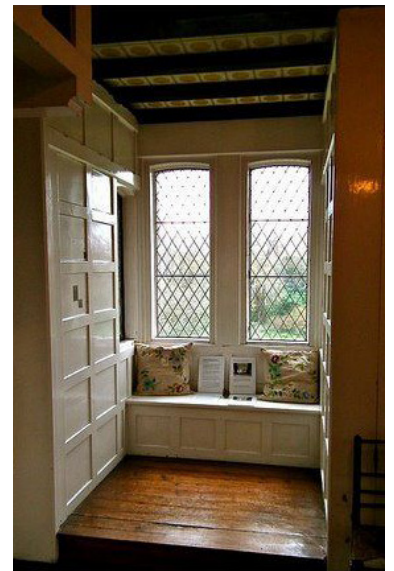


04

ORIEL WINDOW

Since the pre application meeting, we have brought the lift inboard of the mass of the building, which has significantly improved the relationship between the entrance hall and south western wing. This makes readable the clear organisation of the 3 key masses of this wing of the building; the entrance hall, the southwestern bedroom wing and the roof terrace.

In developing this area of the building, we have introduced an oriel window to the south façade, which serves a threefold purpose. It creates a dynamic moment in a long corridor to the bedrooms, in which 1 or 2 people can sit to read a book in the afternoon sun, allows us to bring afternoon/evening light in to the corridor and master suite through clear glazing which is not overlooking 33 Templewood Avenue and references the architectural context of the area which is generally of the art and crafts movement and expresses the vertical elements of the building (as does the Schreiber House).



05

- 01 Overview of scheme and immediate context
- 02 View from Templewood Avenue showing oriel window
- 03 Red House by Phillip Webb and William Morris
- 04 Oriel Window - Red House
- 05 Oriel Window seating - Red House