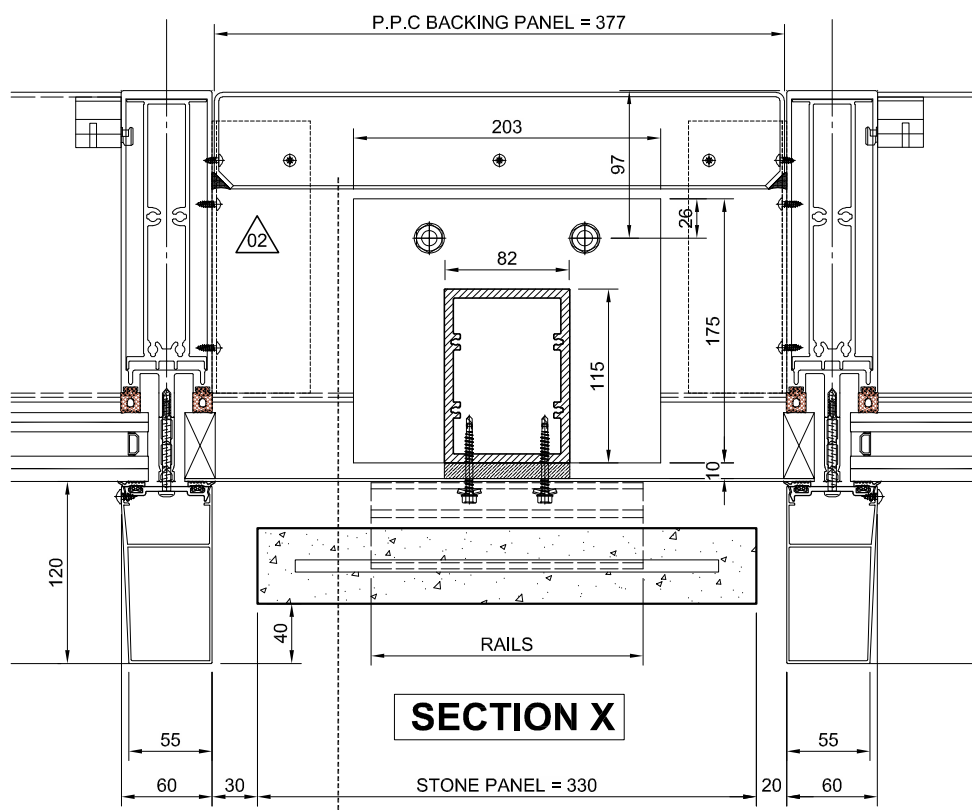


03

3mm P.P.C ALUM BACKING TRAY FIXED WITH D7981/4.2x13mm SCREWS @ 50mm FROM EACH CORNER & APPROX 250mm CTS. NOTCHED TO SUIT BRACKET INSERTS AND/OR FIXINGS
COLOUR CHANGE TO SL804G RAL 7004 (MATT HR) ON GROUND FLOOR STICK SYSTEMS - AS PER RFI-00137/ CRF-034 RESPONSE 505 - 18.03.19

DESIGN NOTE:
ISOLATED PLAN DETAIL INSULATION REMOVED FOR CLARITY



01/600

STONE PANEL SUPPORT FRAME:

FRAME FABRICATED USING HUECK SECTION 547 760, SCREW FIXED TO 10mm THK ALUM. PLATES (TOP & BTM) WITH D7982/5.5x38mm A4 S/S SCREWS. FRAME FIXED INTO TRANSOMS WITH M10 C/SUNK RIV-NUTS & D933/M10x30 A4 S/S BOLTS inc D125/M10 S/S SPRING WASHER (RIV NUTS FACTORY FITTED TO TRANSOMS)
82mm WIDE x 10mm THK FULL HT FARRAT TBK THERMAL BREAK PLATE USED BETWEEN VERTICAL SECTION 547760 AND EXTERNAL OUTER PANEL
HORIZONTAL RAILS FIXED THROUGH INTO VERTICAL RAILS WITH SFS TEK SCREWS T.B.C

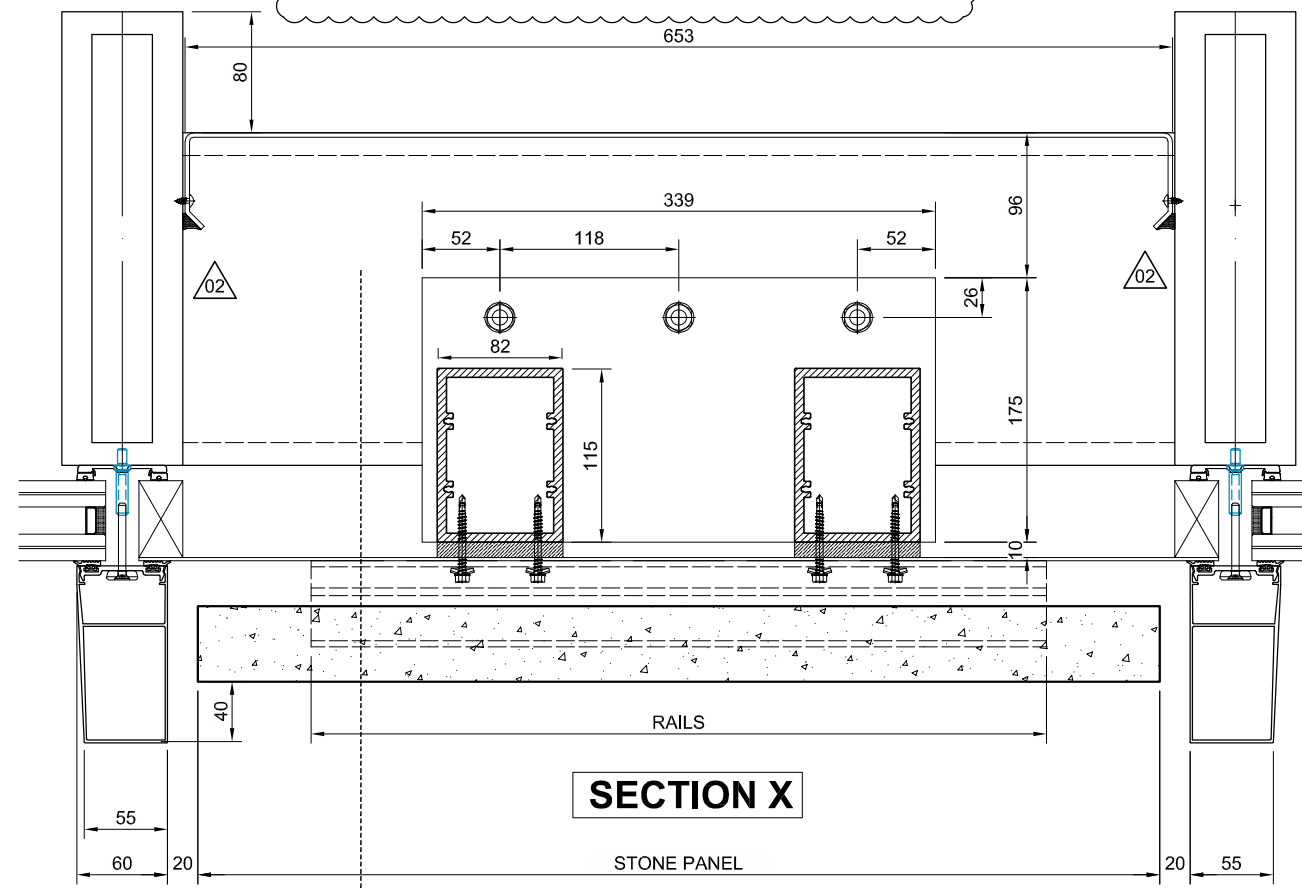
ALUMINIUM RAILS FIXED THROUGH 2mm THK P.P.C ALUMINIUM OUTER SHEET. SN805G 60microns CLASS 1 D1036 (RAL9005)
RAILS FIXED INTO SUPPORT SECTIONS 547760 WITHIN TYPE 1 UNITISED FRAME WITH SFS SELF DRILLING SCREWS
RAILS: BLACK ANODISED EV6 ~ 25microns

INSTALLATION NOTE:
UNDER SIDE OF TRANSOM TO HAVE ADDITIONAL PACKERS COMPRISING OF 10, 8 & 6mm THK MILD STEEL SHIMM PLATES ~ 2 COATS PRIMER

03

3mm P.P.C ALUM BACKING TRAY FIXED WITH D7981/4.2x13mm SCREWS @ 50mm FROM EACH CORNER & APPROX 250mm CTS. NOTCHED TO SUIT BRACKET INSERTS AND/OR FIXINGS
COLOUR CHANGE TO SL804G RAL 7004 (MATT HR) ON GROUND FLOOR STICK SYSTEMS - AS PER RFI-00137/ CRF-034 RESPONSE 505 - 18.03.19

DESIGN NOTE:
ISOLATED PLAN DETAIL INSULATION REMOVED FOR CLARITY



01/602

STONE PANEL SUPPORT FRAME:

FRAME FABRICATED USING HUECK SECTION 547 760, SCREW FIXED TO 10mm THK ALUM. PLATES (TOP & BTM) WITH D7982/5.5x38mm A4 S/S SCREWS. FRAME FIXED INTO TRANSOMS WITH M10 C/SUNK RIV-NUTS & D933/M10x30 A4 S/S BOLTS inc D125/M10 S/S SPRING WASHER (RIV NUTS FACTORY FITTED TO TRANSOMS)
82mm WIDE x 10mm THK FULL HT FARRAT TBK THERMAL BREAK PLATE USED BETWEEN VERTICAL SECTION 547760 AND EXTERNAL OUTER PANEL
HORIZONTAL RAILS FIXED THROUGH INTO VERTICAL RAILS WITH SFS TEK SCREWS T.B.C

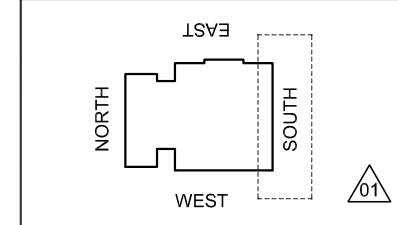
ALUMINIUM RAILS FIXED THROUGH 2mm THK P.P.C ALUMINIUM OUTER SHEET. Colour: SN805G 60microns ~ CLASS 1 D1036 (RAL 9005)
RAILS FIXED INTO SUPPORT SECTIONS 547760 WITHIN TYPE 1 UNITISED FRAME WITH SFS SELF DRILLING SCREWS
RAILS: BLACK ANODISED EV6 ~ 25microns

INSTALLATION NOTE:
UNDER SIDE OF TRANSOM TO HAVE ADDITIONAL PACKERS COMPRISING OF 10, 8 & 6mm THK MILD STEEL SHIMM PLATES ~ 2 COATS PRIMER

CDM Regulations

Hazards	Date Added	Date Revisited	Risk Assessment Date
HEAVY GLASS - LOADS INDICATED	05/02/15		

HEALTH & SAFETY REVIEW REQUIRED IN ACCORDANCE WITH CDM REGULATIONS



KEY PLAN

DESIGN NOTES: Technical Report list:

DOCUMENT TITLE	Doc Number	CONJECT Number
Facade Design & Glass Risk Assessment	3135-TR003	KXC-S1-001-Y-21-TR003
Glass Technical report	3135-TR004	KXC-S1-001-Y-21-TR004
Technical data for H&S fire stop details	3135-TR005	KXC-S1-001-Y-21-TR005
Material data sheet report	3135-TR006	KXC-S1-001-Y-21-TR006
Door schedule & Operation Information	3135-TR007	KXC-S1-001-Y-21-TR007
Facade Airborne Acoustic report	3135-TR008	KXC-S1-001-Y-21-TR008
Facade Vertical & Horizontal Acoustic report	3135-TR009	KXC-S1-001-Y-21-TR009
Accommodation of structural movement	3135-TR012	KXC-S1-001-Y-21-TR012
Halfen channel & Slab edge design	3135-TR013	KXC-S1-001-Y-21-TR013
Thermal Safety Check on Glass	3135-TR022	KXC-S1-001-Y-21-TR022

DO NOT SCALE : IF IN DOUBT ASK!

THIS DRAWING REMAINS THE PROPERTY OF McMULLEN FACADES LTD AND SHOULD NOT BE COPIED NOR ITS CONTENTS DIVULGED WITHOUT PRIOR CONSENT

Signed: S.Patterson
Date: 04-05-2018
Internal Quality Check

THERMAL REPORT FOR GROUND FLOOR SOUTH ISSUED 25/01/2019 (KXC-S1-001-Y-3135-904-TR203)

No.	Intd	Date	Description
003	GC	04-04-19	COLOUR CHANGE ISSUE FOR CONSTRUCTION
002	CC	26-02-19	VCL CLEARLY SHOWN ISSUE FOR CONSTRUCTION
001	DR	07-12-18	SECOND ISSUE
000	SP	04-05-18	FIRST ISSUE

Contract:	KINGSCROSS S1
Architect:	MOSSISSIAN
Main Contractor:	BAM
Drawing:	SOUTH ELEVATION GND - 2ND FLOOR GENERAL SYSTEM DETAILS
Drawn By:	SPatterson
Date:	04-05-2018
Scale:	1:5 @ A3
MFL No.:	3135-615
DMS Code:	KXC-S1-001-Y-3135-21-615
Revision:	003

DRAWING ISSUED FOR: CONSTRUCTION
STATUS OF PREVIOUS RETURN: A B C -

McMullen Facades Limited
66 Lurgan Road, Moira,
Craigavon, Co. Armagh BT67 0LX
Tel: +44 (0) 28 9261 9688
Fax: +44 (0) 28 9261 9711
Email: design@mcmmullenfacades.com