

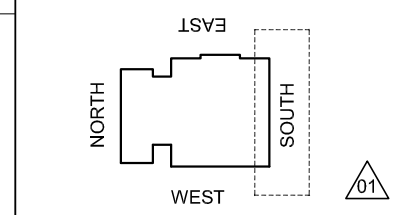
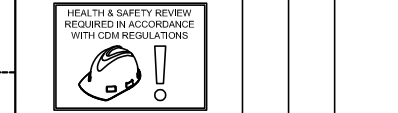
CLADDING SUPPORT FABRICATED FROM SHS 120x120x6mm.
CLADDING FIXED 50mm BOTH ENDS AND 300mm MAX CENTRES

H

3mm THK FOLDED ALUM COLUMN CLADDING PANELS:
Colour: SILVER ANODISED EV1 25microns.
PANELS FIXED WITH A4 S/STEEL RP25 TORX SCREWS ~
PANELS ORDERED WITH PILOT HOLES TO ENSURE EQUALLY
SPACED CTS.

CDM Regulations

Hazards	Date Added	Date Mitigated	Risk Assessment Date
HEAVY GLASS ~ LOADS INDICATED	05/02/15		



DESIGN NOTES: Technical Report list:

DOCUMENT TITLE	Doc Number	CONJECT Number
Facade Design & Glass Risk Assessment	3135-TR003	KXC-S1-001-Y-21-TR003
Glass Technical report	3135-TR004	KXC-S1-001-Y-21-TR004
Technical data for HBI fire stop details	3135-TR005	KXC-S1-001-Y-21-TR005
Material data sheet report	3135-TR006	KXC-S1-001-Y-21-TR006
Door schedule & Operation information	3135-TR007	KXC-S1-001-Y-21-TR007
Facade Airborne Acoustic report	3135-TR008	KXC-S1-001-Y-21-TR008
Facade Vertical & Horizontal Acoustic report	3135-TR009	KXC-S1-001-Y-21-TR009
Accommodation of structural movement	3135-TR012	KXC-S1-001-Y-21-TR012
Hatten channel & Slab edge design	3135-TR013	KXC-S1-001-Y-21-TR013
Thermal Safety Check on Glass	3135-TR022	KXC-S1-001-Y-21-TR022

DO NOT SCALE : IF IN DOUBT ASK!

THIS DRAWING REMAINS THE PROPERTY
OF McMULLEN FACADES LTD AND SHOULD
NOT BE COPIED NOR ITS CONTENTS
DIVULGED WITHOUT PRIOR CONSENT

Signed:	002	Internal Quality Check
Date:	04-05-2018	

THERMAL REPORT FOR GROUND FLOOR SOUTH ISSUED 25/01/2019 (KXC-S1-001-Y-3135-904-TR203)

No.	Intd	Date	Description	Date
003	DR	15-04-19	GLASS WIDTH UPDATED - ISSUE FOR CONSTRUCTION	15-04-19
002	GC	04-04-19	INTERNAL CLADDING SUPPORT ISSUE FOR CONSTRUCTION	04-04-19
001	DR	07-12-18	SECOND ISSUE	07-12-18
000	SP	04-05-18	FIRST ISSUE	04-05-18

Revision	Check	Description	Date

Contract: KINGSCROSS S1

Architect: MOSSISSIAN

Main Contractor: BAM

Drawing: SOUTH ELEVATION GND - 2ND FLOOR
GENERAL SYSTEM DETAILS

Drawn By: SPatterson Date: 04-05-2018

Scale: 1:5 @ A3 MFL No.: 3135-617

DMS Code: KXC-S1-001-Y-3135-21-617 Revision: 003

DRAWING ISSUED FOR: STATUS OF PREVIOUS RETURN

CONSTRUCTION A (B) C -

McMullen Facades Limited
66 Lurgan Road, Moira,
Craigavon, Co. Armagh BT67 0LX
Tel: +44 (0) 28 9261 9688
Fax: +44 (0) 28 9261 9711
Email: design@mcmullenfacades.com

01

02

FOR FULL SECTION & ELEV.
SEE DWG: 3135-212 Section 3 & 4

**SEE DETAIL: 3135-617
FOR STRUCTURE NOTES.**

02

SCHUCO VISS Ixtra LAZER WELDED BESPOKE
STEEL C/WALLING S/G SYSTEM:
MULLION & TRANSOM ~ Steel Grade S 275 J2
COLOUR CHANGE TO SL804G RAL 7004 (MATT HF)
ON GROUND FLOOR STICK SYSTEMS -
AS PER RFI-00137/ CRF-034 RESPONSE 505 -
18.03.19

20mm CLOSED CELL BACKER-ROD SEALED AROUND
PERIMETER WITH SILICONE SEALANT
COLOUR: TBC?

3mm THK P.P.C ALUM. CORNER PRESSING
SILVER ANODISED EV1 ~ 25microns
PRESSING DESIGNED WITH 6x100mm SLOTS SPACED
AROUND THE GLAZING EDGE FOR GLAZING INTO THE
C/WALLING WITH THE USE OF SCHUCO CLIPS
0.7mm EPDM GLAZED INTO SYSTEM AS SHOWN.

3mm THK FOLDED P.P.C ALUM PANELS:
Colour: EV1 SILVER ANODISED 25microns.
PANELS FIXED BETWEEN MULLIONS WITH SCHUCO CLIPS
AND FASTENED WITH D7981 ST4.8X16 A4-70 SCREW AT
250mm MAX CTRS

INSULATED P.P.C ALUM PANEL:
External: 3mm ALUM SKIN ~ SILVER ANODISED EV1
~ 25microns
Core: 37mm ROCKWOOL RWA45 INSULATION

PANEL DESIGNED WITH 6x100mm SLOTS SPACED
AROUND THE GLAZING EDGE FOR GLAZING INTO
THE C/WALLING WITH THE USE OF SCHUCO CLIPS

DESIGN NOTE:
NO FINALIZED CONCEPT OR INSTRUCTION FOR
RECEPTION AREA DESIGN HAS YET BEEN ISSUED
FOR WA TO COMMENT AGAINST
- RECEPTION AREA IN ABEYANCE DUE TO CLIENT
CHANGE

ENTRANCE DOORS

RECORD RST 360 (ROUND AUTOMATIC SLIDER) OVERHEAD
AUTOMATION

TO SUPPLY, INSTALL AND COMMISSION, INTO FULLY PREPARED
OPENINGS, PPC RAL ALUMINIUM DOORS OF 1No. SETS AUTOMATIC
BLASI ROUND SLIDING DOOR SUITE (BI-PARTING VERSION,
WITHOUT EMERGENCY EXIT FUNCTION)

1No. RST 360 (FULLY-ROUND) AUTOMATIC CURVED SLIDING
DOOR-SET
3020mm(W)x3000mm (H) w/300mm OVERHEAD~ CANOPY INCLUDED

8No. STANDARD ACTIVATION AND 4No. SAFETY SENSORS FOR THE
PASSAGE AREA.

SIDE PANELS/DOOR LEAVES/PROTECTIVE DOOR LEAVES ~
APPROX. 9.52mm CLEAR LAMINATED SAFETY GLASS

CANOPY/CEILING~ Watertight roof on outside; 180° / Metal Dust roof
(inside) 180° / 4No. LED spot lights (ceiling integrated)

FLOOR MAT~Inc. Cleaning Mat type Blasi PURUS (multi-part, with rep
and brush. Colour: Anthracite)

Manufactured in accordance to BS EN 16005:2012, EN 13849-1
Performance Level C

DOOR REF: GF-D07