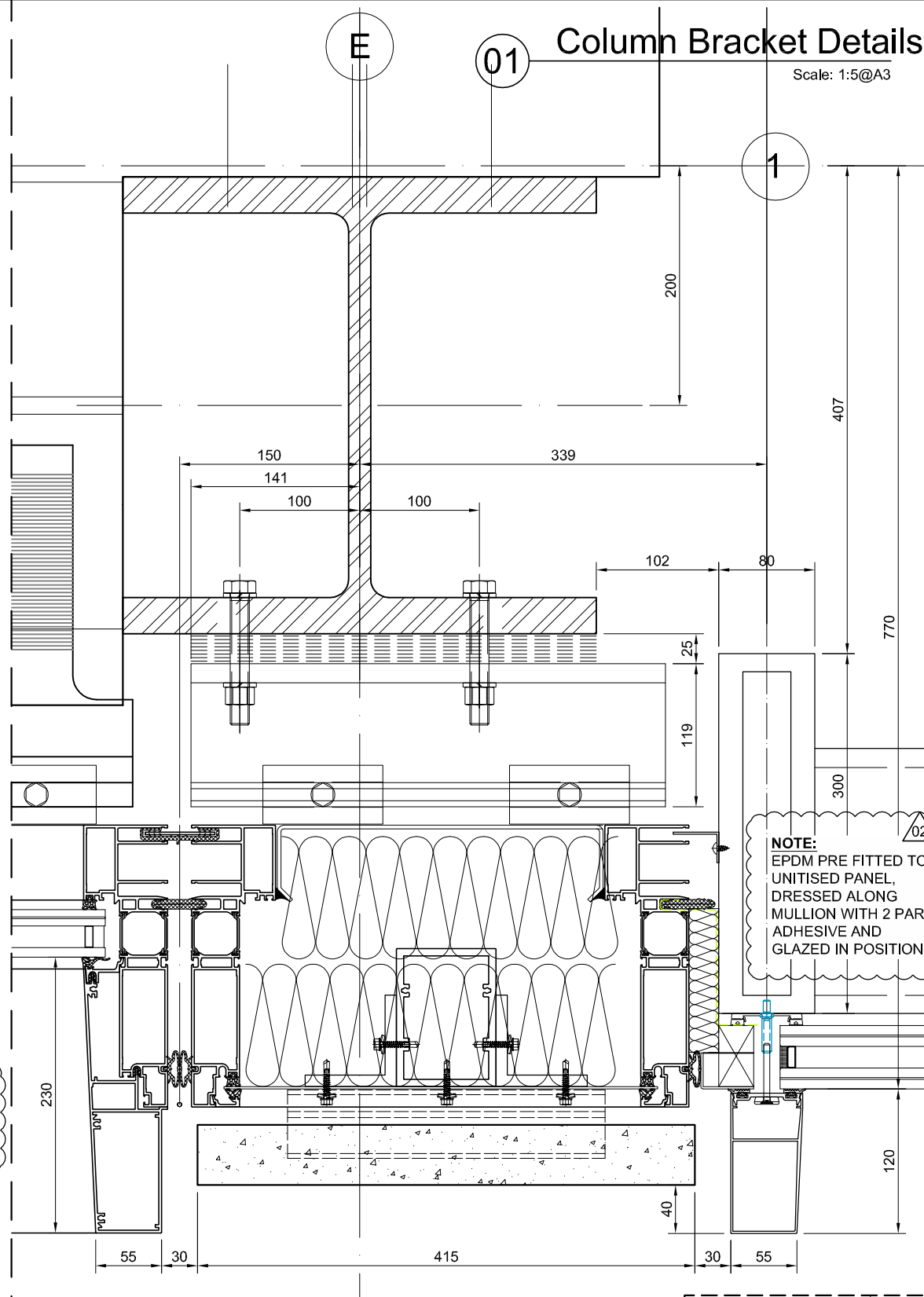
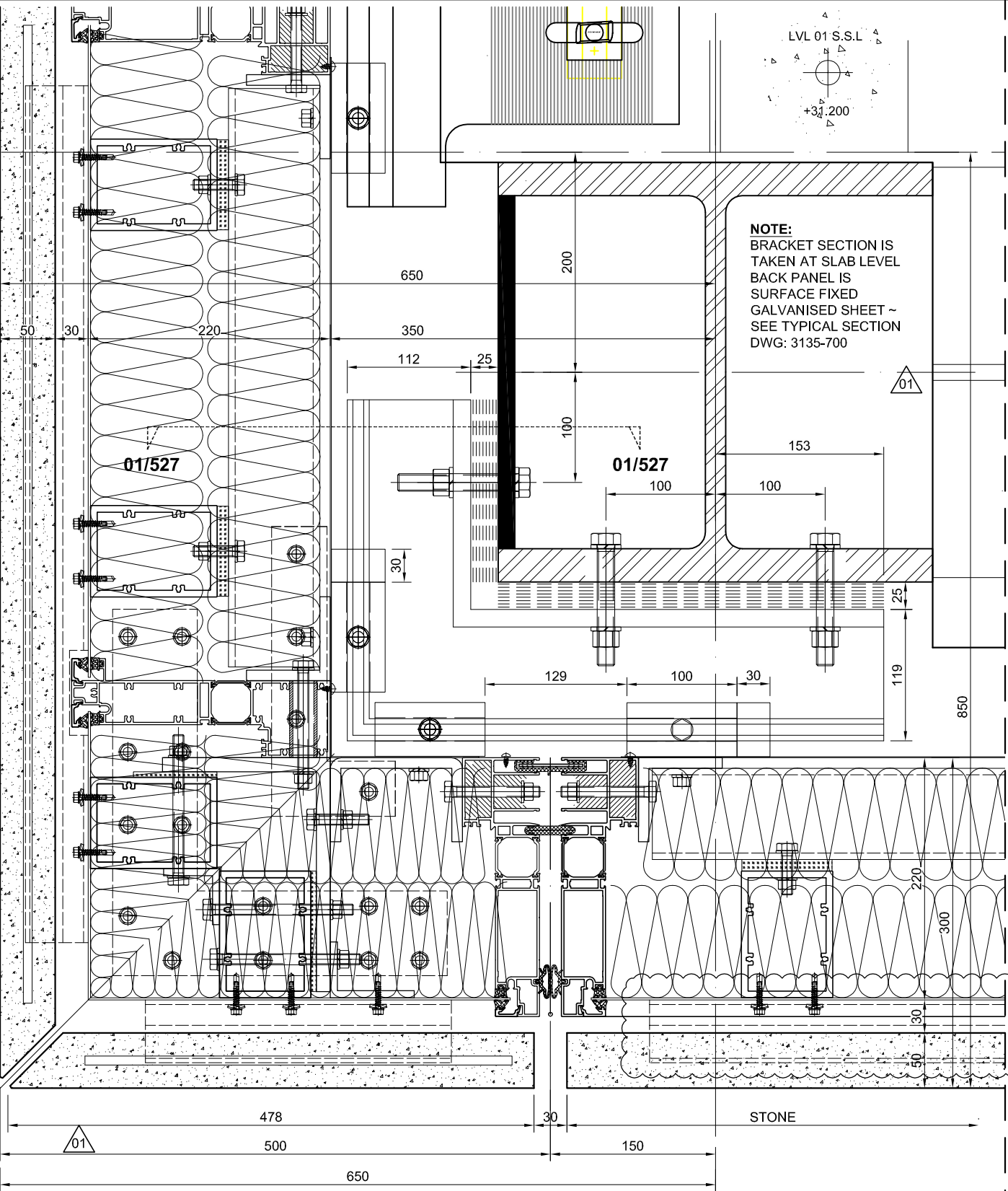
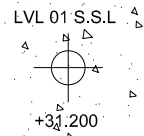


# Column Bracket Details

Scale: 1:5@A3



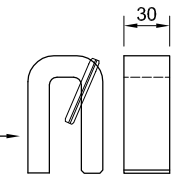
UNITISED FIXING BRACKET TO BE FABRICATED FROM 15mm THK MILD STEEL PLATE (GRADE S275)  
2No. COATS OF GALVAFROID SHOP APPLIED PRIMER

BRACKETS FIXED TO COLUMN PLATE:  
D933/M16x90mm A4 S/STEEL SET BOLTS  
D125/M16 & D127/M16 A4 S/STEEL FLAT/SPRING WASHERS  
D934/M16 FULL HEAD A4 S/STEEL NUTS  
Tightening Torque for M16 = 140Nm

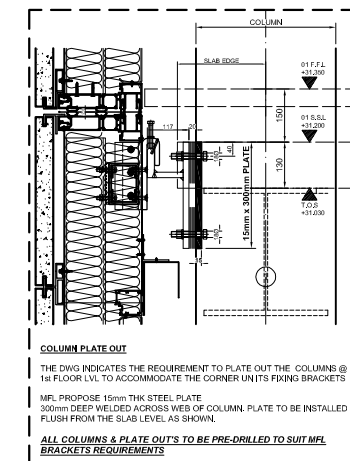
FULL BRACKET SIZE 2mm GALVANISED PACKING SHIMS PROVIDED TO ALLOW FOR INSTALLATION TOLERANCES

BRACKETS ISOLATED FROM STEEL BEAMS WITH 0.7mm EPDM.

CORNER UNIT HOOK BRACKETS TO BE 'LOCKED' IN POSITION WITH USE OF MODIFIED HOOK SECTION EX-P-19020 @ 30mm WIDE WITH A4 S/S ROLL PIN



**IMPORTANT**  
ALL STRUCTURE HAS BEEN CROSS-CHECKED WITH LATEST BIM MODEL

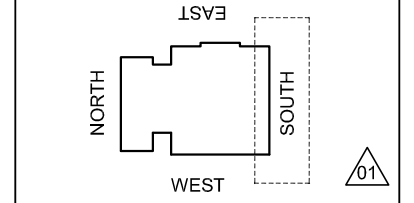
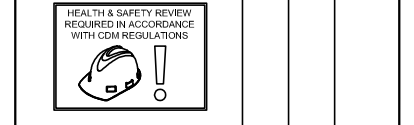


THE DWG INDICATES THE REQUIREMENT TO PLATE OUT THE COLUMNS @ 1st FLOOR LVL TO ACCOMMODATE THE CORNER UNITS FIXING BRACKETS

MFL PROPOSE 15mm THK STEEL PLATE  
300mm DEEP WELDED ACROSS WEB OF COLUMN PLATE TO BE INSTALLED FLUSH FROM THE SLAB LEVEL AS SHOWN

ALL COLUMNS & PLATE CUTS TO BE PRE-DRILLED TO SUIT MFL BRACKETS REQUIREMENTS

CDM Regulations			
Hazards	Date Added	Date Mitigated	Risk Assessment Date
HEAVY GLASS - LOADS INDICATED	05/02/15		



DESIGN NOTES: Technical Report list:

DOCUMENT TITLE	Doc Number	CONJECT Number
Facade Design & Glass Risk Assessment	3135-TR003	KXC-S1-001-Y-21-TR003
Glass Technical report	3135-TR004	KXC-S1-001-Y-21-TR004
Technical data for HBI fire stop details	3135-TR005	KXC-S1-001-Y-21-TR005
Material data sheet report	3135-TR006	KXC-S1-001-Y-21-TR006
Door schedule & Operation information	3135-TR007	KXC-S1-001-Y-21-TR007
Facade Airborne Acoustic report	3135-TR008	KXC-S1-001-Y-21-TR008
Facade Vertical & Horizontal Acoustic report	3135-TR009	KXC-S1-001-Y-21-TR009
Accommodation of structural movement	3135-TR012	KXC-S1-001-Y-21-TR012
Hatten channel & Slab edge design	3135-TR013	KXC-S1-001-Y-21-TR013
Thermal Safety Check on Glass	3135-TR022	KXC-S1-001-Y-21-TR022

DO NOT SCALE : IF IN DOUBT ASK!

© THIS DRAWING REMAINS THE PROPERTY OF McMULLEN FACADES LTD AND SHOULD NOT BE COPIED NOR ITS CONTENTS DIVULGED WITHOUT PRIOR CONSENT

Signed: S.Patterson  
Date: 04-05-2018  
Internal Quality Check

THERMAL REPORT FOR GROUND FLOOR SOUTH ISSUED 25/01/2019 (KXC-S1-001-Y-3135-904-TR203)

No.	Intd	Date	Description
002	CC	26-02-19	DESIGN NOTE ADDED ISSUE FOR CONSTRUCTION
001	DR	07-12-18	ALL COMMENTS RECEIVED
000	SP	04-05-18	FIRST ISSUE

Revision	Check	Description	Date

Contract: KINGSCROSS S1

Architect: MOSSISSIAN

Main Contractor: BAM

Drawing: SOUTH ELEVATION GND - 2ND FLOOR GENERAL SYSTEM DETAILS

Drawn By: SPatterson Date: 04-05-2018

Scale: 1:5 @ A3 MFL No.: 3135-620

DMS Code: KXC-S1-001-Y-3135-21-620 Revision: 002

DRAWING ISSUED FOR: CONSTRUCTION STATUS OF PREVIOUS RETURN: A (B) C -

McMullen Facades Limited  
66 Lurgan Road, Moira,  
Craigavon, Co. Armagh BT67 0LX  
Tel: +44 (0) 28 9261 9688  
Fax: +44 (0) 28 9261 9711  
Email: design@mcmullenfacades.com