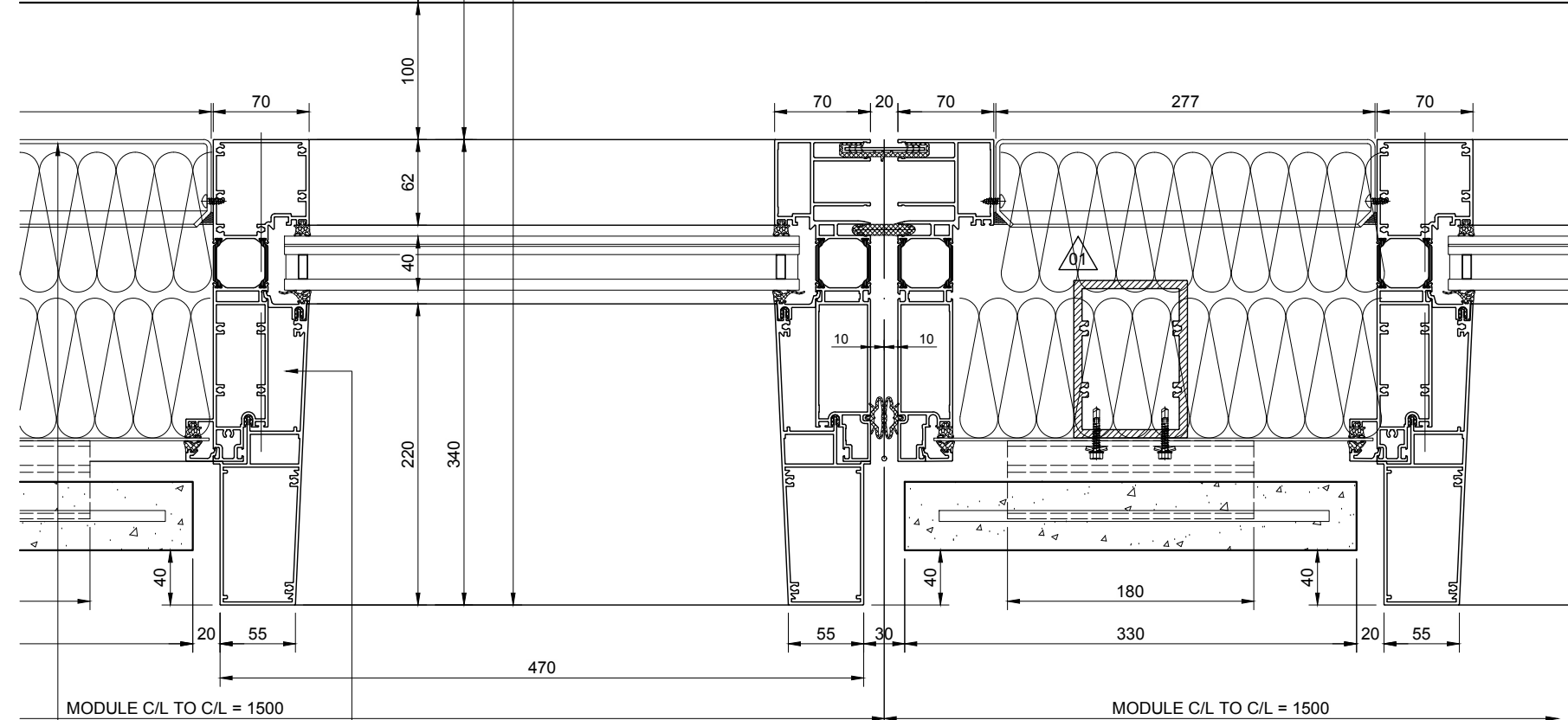
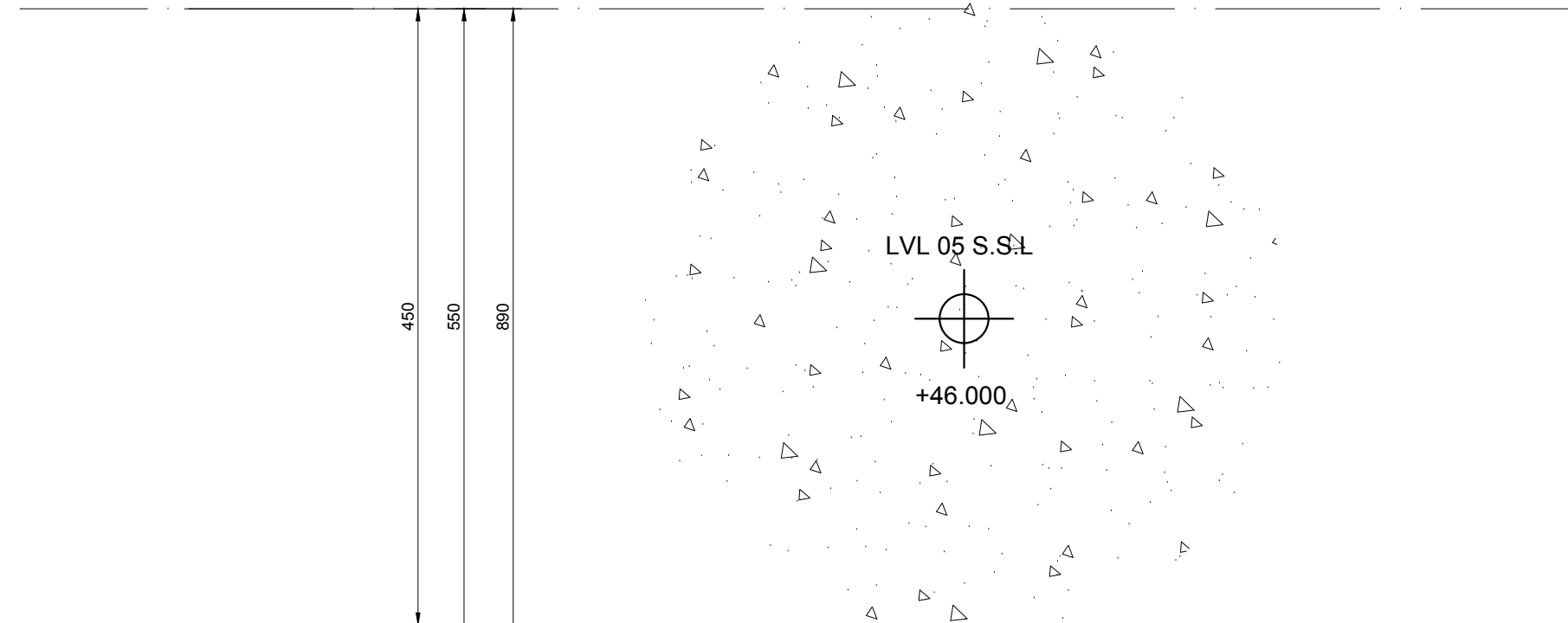


50mm ARMENIAN TUFF STONE
SECURED TO EXTRUDED ALUMINIUM RAILS USING KURF
NOTCHES CUT INTO THE TOP & BTM OF THE CUT PANEL.

ALUMINIUM RAILS FIXED THROUGH 2mm THK P.P.C
ALUMINIUM OUTER SHEET.
Colour: YN205E 60microns ~ CLASS 2 D2525
RAILS FIXED INTO SUPPORT SECTIONS 547760
WITHIN TYPE 1 UNITISED FRAME WITH
SX6_12-S16-5.5x32 SELF DRILLING SCREWS.

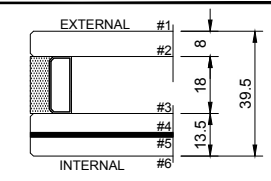
RAILS: BLACK ANODISED EV6 ~ 25microns



TYPE 1 THERMALLY BROKEN UNITISED FRAME
DUAL COLOUR SECTIONS:
INTERNAL: SA803G 60microns ~ CLASS 1 D1036
EXTERNAL: YN205E 60microns ~ CLASS 2 D2525
FACE CAPS: Silver Anodised ~ 25 microns

3mm P.P.C ALUM BACKING TRAY
Colour: SA803G 60microns ~ Class 1 D1036
FIXED WITH D7981/4.2x13mm SCREWS @ 50mm
FROM EACH CORNER & APPROX 250mm CTS.
SEALED AROUND PERIMETER WITH SILICONE
SEALANT

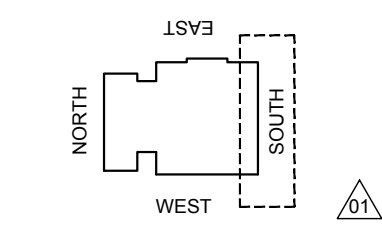
G1 - TYPE 1 VISION ~ 39.5mm THK - 54Kgs/m2
OUTER LEAF: 8mm HEAT STRENGTHENED CLEARLITE IPASOL
LIGHT GREY 60 / 33 SURFACE 2
CAVITY: 18mm CAVITY, BLACK CHROMATECH
ULTRA S/STEEL SPACER BAR, ARGON FILLED,
STANDARD POLYSULPHIDE EDGE SEAL
INNER LEAF: 13.5mm ANNEALED PVB LAMINATE
(6/1.5/6) CLEARLITE



CDM Regulations

Hazards	Date Added	Date Mitigated	Risk Assessment Date
HEAVY GLASS - LOADS INDICATED	05/02/15		

HEALTH & SAFETY REVIEW
REQUIRED IN ACCORDANCE
WITH CDM REGULATIONS



KEY PLAN

DESIGN NOTES: Technical Report list:

DOCUMENT TITLE:	Doc Number:	CONJECT Number
Facade Design & Glass Risk Assessment	3135-TR003	KXC-S1-001-Y-21-TR003
Glass Technical report	3135-TR004	KXC-S1-001-Y-21-TR004
Technical data for Hilti fire stop details	3135-TR005	KXC-S1-001-Y-21-TR005
Material data sheet report	3135-TR006	KXC-S1-001-Y-21-TR006
Door schedule & Operation Information	3135-TR007	KXC-S1-001-Y-21-TR007
Facade Airborne Acoustic report	3135-TR008	KXC-S1-001-Y-21-TR008
Facade Vertical & Horizontal Acoustic report	3135-TR009	KXC-S1-001-Y-21-TR009
Accommodation of structural movement	3135-TR012	KXC-S1-001-Y-21-TR012
Halfen channel & Slab edge design	3135-TR013	KXC-S1-001-Y-21-TR013
Thermal Safety Check on Glass	3135-TR022	KXC-S1-001-Y-21-TR022

DO NOT SCALE : IF IN DOUBT ASK!

THIS DRAWING REMAINS THE PROPERTY
OF McMULLEN FACADES LTD AND SHOULD
NOT BE COPIED NOR ITS CONTENTS
DIVULGED WITHOUT PRIOR CONSENT

Signed: SPatterson
Date: 02-05-2018
Internal Quality Check

No.	Intd	Date	Description
002	DM	22/02/18	ISSUED FOR CONSTRUCTION
001	SP	23/08/18	ALL COMMENTS RECEIVED
00	SP	09-05-18	FIRST ISSUE

Revision	Check	Description	Date

Contract: KINGS CROSS S1

Architect: MOSSESIAN

Main Contractor: BAM

Drawing: TYPICAL TYPE 1 BAY STUDY
ELEVATIONS, SECTIONS & DETAILS

Drawn By: SPatterson Date: 02-05-2018

Scale: 1:5 @ A3 MFL No.: 3135-702

DMS Code: KXC-S1-001-Y-3135-702 Revision: 002

DRAWING ISSUED FOR: CONSTRUCTION STATUS OF PREVIOUS RETURN: A B C -

McMullen Facades Limited
66 Lurgan Road, Moira,
Craigavon, Co. Armagh BT67 0LX
Tel: +44 (0) 28 9261 9688
Fax: +44 (0) 28 9261 9711
Email: design@mcmullenfacades.com