

SLAB BRACKETS:  
EXTRUDED ALUM. SECTION ref: EX-P-19021  
FIXED TO CHANNELS WITH HALFEN HBC-C-N  
M16x60 8.8 F T BOLT inc M16 NUT & HW01  
SERRATED WASHER PLATE.  
JACKING SCREWS D913/M10x70mm  
BRACKET SIZE AND FIXING QTY IS DEPENDANT  
UPON LOCATION & DETAIL.

UNIT FIXED BRACKETS:  
EXTRUDED ALUM HOOK BRACKET EX-P-19020  
inc ALL BRACKET ATTACHMENTS ARE FACTORY  
FITTED WITHIN UNIT FABRICATION

SITE INSTALLED HORIZONTAL GASKETRY TO BE  
INSTALLED & SEALED IN ACCORDANCE TO HUECK  
SYSTEM MANUALS

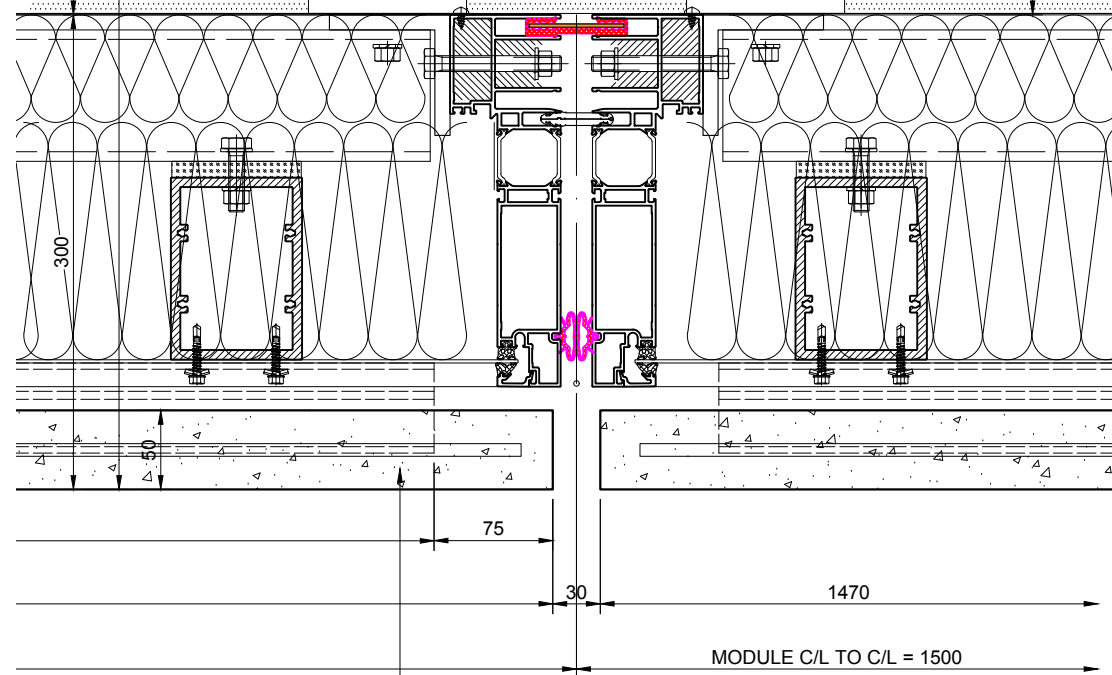
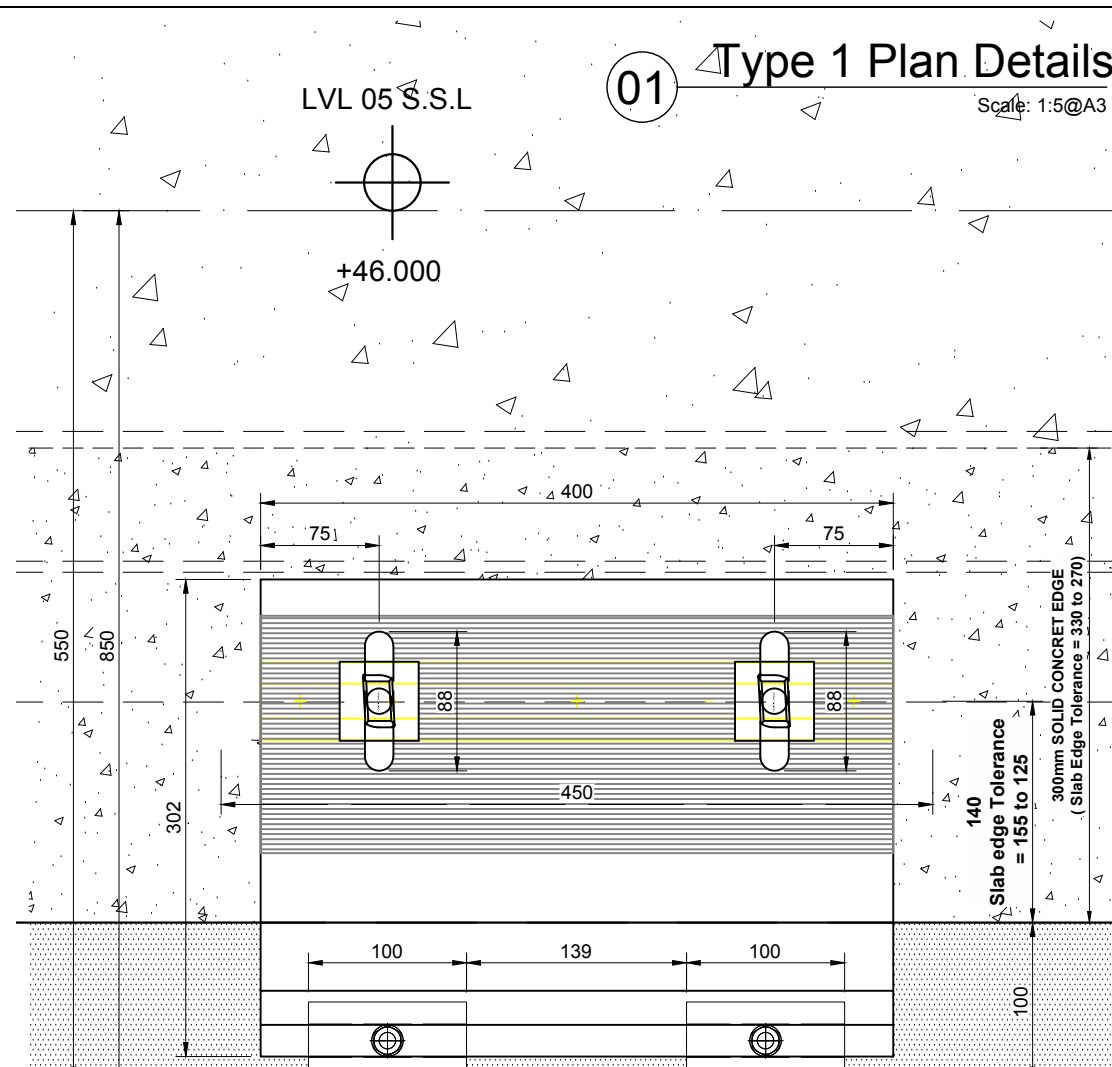
0.9mm GALVANIZED STEEL BACKING SHEET FIXED/SEALED  
AROUND SYSTEM WITH D7981/4.2x13mm SCREWS @ 50mm  
FROM EACH CORNER & APPROX 250mm CTS.

ALUMINIUM RAILS FIXED THROUGH 2mm THK P.P.C  
ALUMINIUM OUTER SHEET.  
Colour: YN205E 60microns ~ CLASS 2 D2525  
RAILS FIXED INTO SUPPORT SECTIONS 547760  
WITHIN TYPE 1 UNITISED FRAME WITH  
SX6\_12-S16-5.5x32 SELF DRILLING SCREWS.

RAILS: BLACK ANODISED EV6 ~ 25microns

FACTORY FITTED ROCKWOOL RWA45 LOOSE FILL  
INSULATION

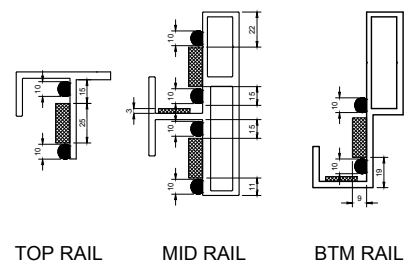
01



50mm ARMENIAN TUFF STONE  
SECURED TO EXTRUDED ALUMINIUM RAILS USING KURF  
NOTCHES CUT INTO THE TOP & BTM OF THE CUT PANEL.

KERF CUT TO BE INJECTED WITH BLACK CT1 SEALANT  
PRIOR TO THE STONE PANEL BEING SET ONTO THE  
RAIL  
PLEASE UNSURE SEALANT DOES NOT SEEP BEYOND  
BTM OF STONE OR ONTO THE RAILS

F-TAPE-159 30x9mm TO BE APPLIED AS SHOWN  
ACROSS THE FULL WIDTH OF THE RAILS.



TOP RAIL MID RAIL BTM RAIL

01 Type 1 Plan Details  
Scale: 1:5@A3

JRL

**McMULLEN**

CDM Regulations

Hazards	Date Assessed	Date Mitigated	Risk Assessment Date
HEAVY GLASS - LOADS INDICATED	05/02/15		

HEALTH & SAFETY REVIEW  
REQUIRED IN ACCORDANCE  
WITH CDM REGULATIONS

EAST  
NORTH  
WEST  
SOUTH

01

KEY PLAN

DESIGN NOTES: Technical Report list:

DOCUMENT TITLE:	Doc Number:	CONJECT Number
Facade Design & Glass Risk Assessment	3135-TR003	KXC-S1-001-Y-21-TR003
Glass Technical report	3135-TR004	KXC-S1-001-Y-21-TR004
Technical data for fire stop details	3135-TR005	KXC-S1-001-Y-21-TR005
Material data sheet report	3135-TR006	KXC-S1-001-Y-21-TR006
Door schedule & Operation Information	3135-TR007	KXC-S1-001-Y-21-TR007
Facade Airborne Acoustic report	3135-TR008	KXC-S1-001-Y-21-TR008
Facade Vertical & Horizontal Acoustic report	3135-TR009	KXC-S1-001-Y-21-TR009
Accommodation of structural movement	3135-TR012	KXC-S1-001-Y-21-TR012
Halfen channel & Slab edge design	3135-TR013	KXC-S1-001-Y-21-TR013
Thermal Safety Check on Glass	3135-TR022	KXC-S1-001-Y-21-TR022

DO NOT SCALE : IF IN DOUBT ASK!

© THIS DRAWING REMAINS THE PROPERTY  
OF McMULLEN FACADES LTD AND SHOULD  
NOT BE COPIED NOR ITS CONTENTS  
DIVULGED WITHOUT PRIOR CONSENT

Signed	SPatterson	Internal Quality Check
Date:	02-05-2018	

No.	Intd	Intd	Date	
002	DM	GB	22/02/19	ISSUED FOR CONSTRUCTION 22/02/19
001	SP	SP	23/08/18	ALL COMMENTS RECEIVED 23/08/18
00	SP	SP	09-05-18	FIRST ISSUE 09-05-18

Revision	Check	Description	Date
Contract:		KINGSCROSS S1	
Architect:		MOSSESIAN	
Main Contractor:		BAM	
Drawing:		TYPICAL TYPE 1 BAY STUDY ELEVATIONS, SECTIONS & DETAILS	
Drawn By:	SPatterson	Date:	02-05-2018
Scale:	X:X @ A3	MFL No.:	3135-703
DMS Code:	KXC-S1-001-Y-3135-703	Revision:	002
DRAWING ISSUED FOR:		STATUS OF PREVIOUS RETURN	
CONSTRUCTION	A	B	C -

McMullen Facades Limited  
66 Lurgan Road, Moira,  
Craigavon, Co. Armagh BT67 0LX  
Tel: +44 (0) 28 9261 9688  
Fax: +44 (0) 28 9261 9711  
Email: design@mcmullenfacades.com