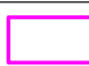



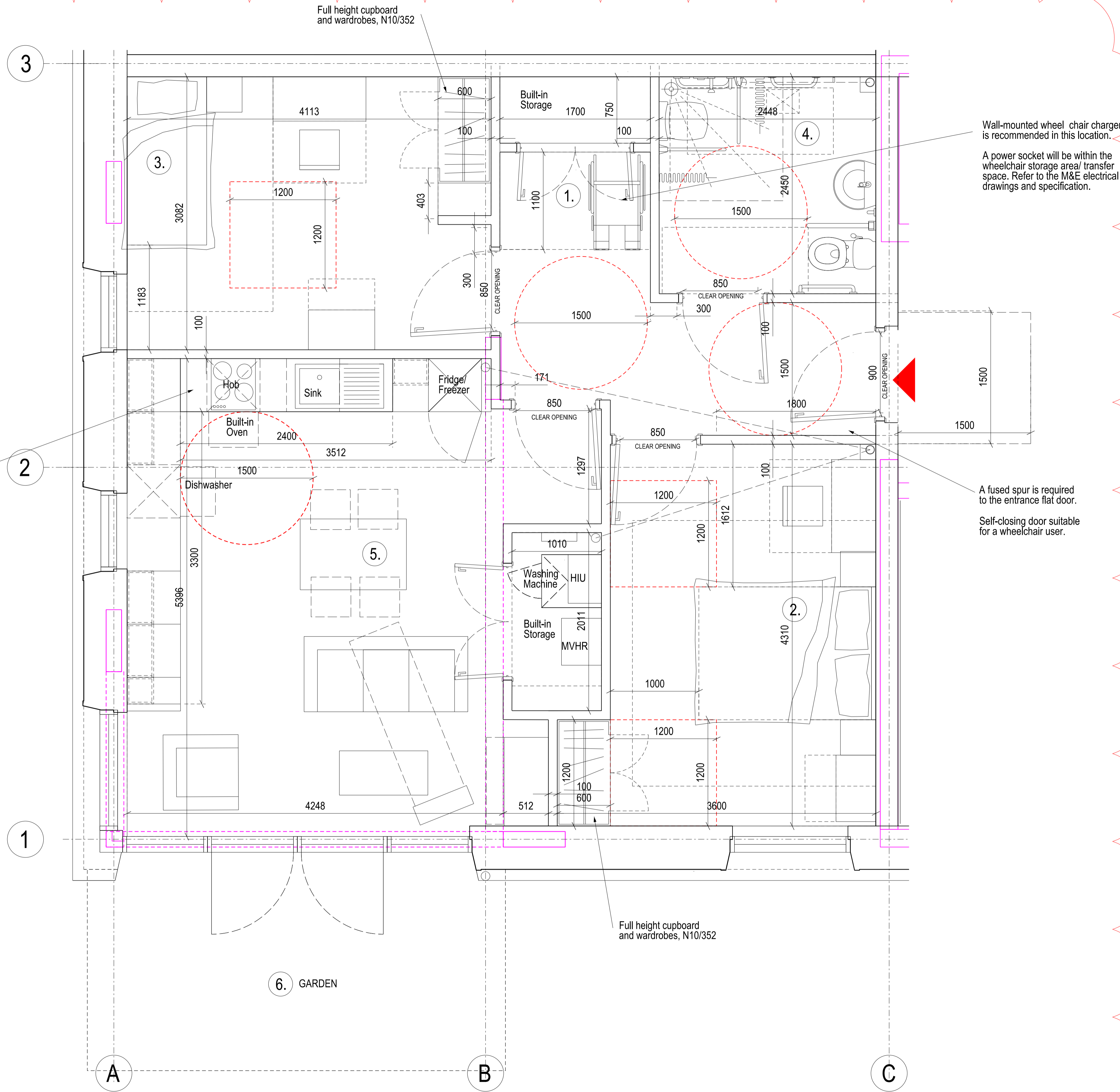
GROSS INTERNAL AREA = 72 m2

PLOT NUMBERS (REFER TO UNIT SCOPING DRAWING P-500):  
AC\_004

| ROOM NAMES AND AREAS                     |         | Min. Requirement |
|--|---------|------------------|
| 1. Hallway, with 1500mm turning circle : |         |                  |
| 2. Principle Double Bedroom :            | 13.6 m2 | 13.5 m2          |
| 3. Single Bedroom :                      | 12.6 m2 | 8.5 m2           |
| 4. Bathroom :                            | 6 m2    |                  |
| 5. Kitchen, Living & Dining :            | 27 m2   | 27 m2            |
| Worktop Length :                         | 6530mm  | 6530mm           |
| Built-in Storage :                       | 2.5 m2  | 2.5 m2           |
| 6. Garden :                              | 40 m2   | 8 m2             |

| KEY   |   |
|---|---|
|  | Structural Columns                                      |
|  | 100mm diameter drainage downpipe (indicative locations) |

Height adjustable or lowerable section of worktop with open leg room below, 2400x600mm.






Wall-mounted wheel chair charger is recommended in this location.

A power socket will be within the wheelchair storage area/ transfer space. Refer to the M&E electrical drawings and specification.

A fused spur is required to the entrance flat door.  
Self-closing door suitable for a wheelchair user.

| SAFETY, HEALTH AND ENVIRONMENTAL INFORMATION:  |                                 |
|--|---------------------------------|
| IN ADDITION TO THE HAZARDS / RISKS IDENTIFIED ABOVE, THE FOLLOWING TYPES OF WORK, DETAIL OR THE DRAWING, NOTE THE FOLLOWING: |                                 |
| Significant Residual Risk:   |                                 |
| Action to be Taken:  | Refer to Health and Safety Plan |

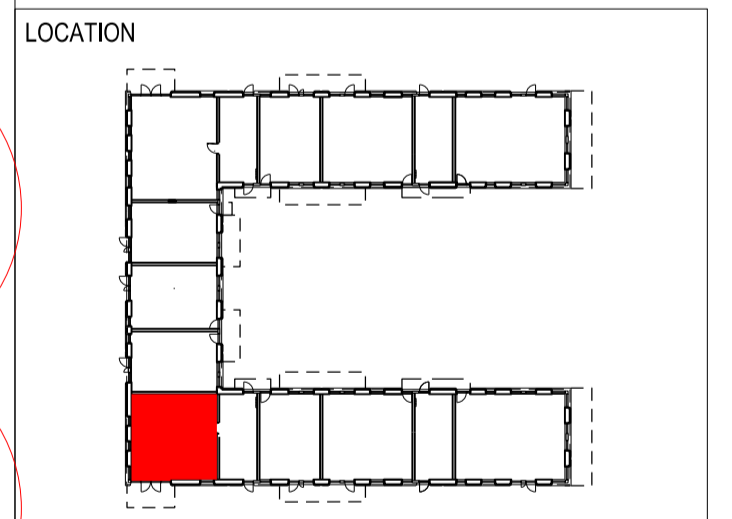
NOTES:

-  COMMUNAL ENTRANCES
-  INDIVIDUAL ENTRANCES
-  SERVICE ENTRANCES

NOTE: INTERNAL LAYOUTS SHOWN FOR ILLUSTRATIVE PURPOSES ONLY  
Note: for landscape proposals and trees to be removed, refer to Landscape Architect's drawings:  
- Trees to be removed/retained - Refer to Arboriculturist Report and Drawing  
- Landscape GA – TM122L03

To be read in conjunction with DAS

| REV  | DATE     | DETAIL                        | DRN | CHK |
|------|----------|-------------------------------|-----|-----|
| PL01 | 6.09.19  | Draft MMA Submission          | HD  | AA  |
| PL02 | 20.09.19 | Draft MMA Submission          | HD  | AA  |
| PL03 | 27.09.19 | MMA Planning Submission       | HD  | AA  |
| PL04 | 24.10.19 | Draft MMA Planning Submission | HD  | AA  |
| PL05 | 07.11.19 | Draft MMA Addendum            | HD  | AA  |
| PL06 | 08.11.19 | MMA Addendum                  | HD  | AA  |
| PL07 | 22.01.20 | MMA Addendum                  | HD  | AA  |



|   |                        |         |
|---|------------------------|---------|
| PROJECT TITLE                                       |                        |         |
| MAITLAND PARK                                       |                        |         |
| DRAWING TITLE                                       |                        |         |
| ASPEN COURT: SOCIAL ACCESSIBLE FLAT 2B3P - MMA 2019 |                        |         |
| DATE  | SCALE                  |         |
| 6/09/19   | 1:25 @ A1<br>1:50 @ A3 |         |
| STATUS  | DRAWN                  | CHECKED |
| Planning  | HD                     | WQ      |

|                |          |
|----------------|----------|
| DRAWING NUMBER | REVISION |
| MPI-P_4532     | PL07     |

**CULLINAN STUDIO**  
5 BALDWIN TERRACE LONDON N1 7RU TEL: 020 7704 1975  
PROJECT EMAIL: mailand@cullinastudio.com

|      |  |
|------|--|
| A    | 2 Bed - 3 Person Wheelchair Accessible Flat Plan |
| 4532 | 1:25 @ A2 / 1:50 @ A3                            |