

GROSS INTERNAL AREA = 92.6 m2



PLOT NUMBERS: (REFER TO UNIT SCOPING DRAWING P-500)

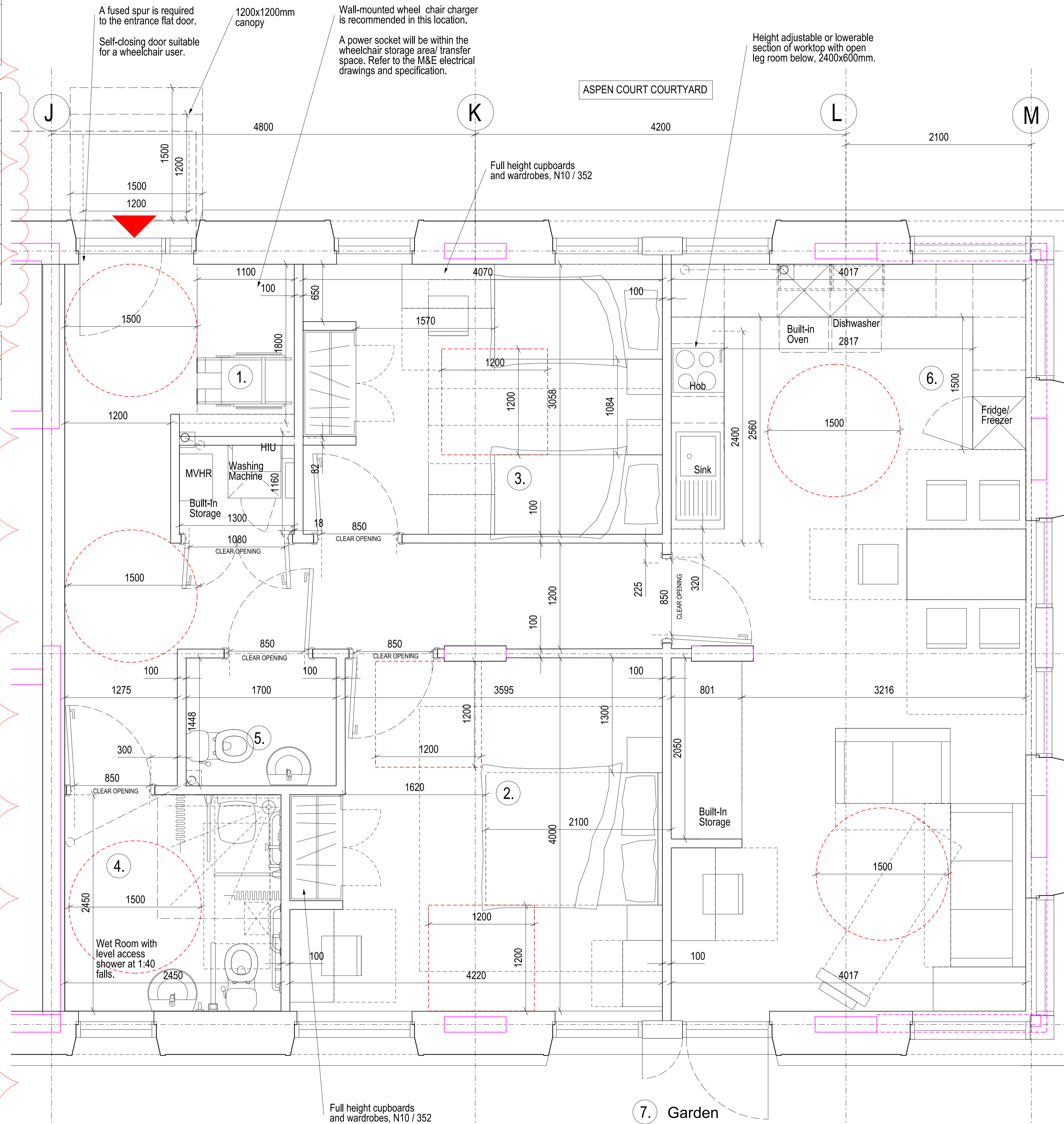
AC_001
AC_011 (same but mirrored)

ROOM NAMES AND AREAS

		Min. Requirement
1. Hallway, with 1500mm turning circle :		
2. Principal Double Bedroom :	15.9 m2	13.5 m2
3. Twin Bedroom :	12.5 m2	12.5 m2
4. Bathroom :	6 m2	
5. WC/ Cloakroom	2.5 m2	
6. Kitchen, Living and Dining Space :	34m2	29m2
Kitchen Worktop Length :	6710mm	6530mm
Built-in Storage :	3m2	3m2
7. Garden :	34.2 m2	8 m2

KEY




	Structural Columns
	100mm diameter drainage downpipe (indicative locations)



SAFETY, HEALTH AND ENVIRONMENTAL INFORMATION:	
IN ADDITION TO THE HAZARDS / RISKS IDENTIFIED ABOVE, THE FOLLOWING TYPES OF WORK ARE IDENTIFIED ON THE DRAWING. NOTE THE FOLLOWING:	
Significant Residual Risk:	
Action to be Taken:	
Refer to Health and Safety Plan	

NOTES:

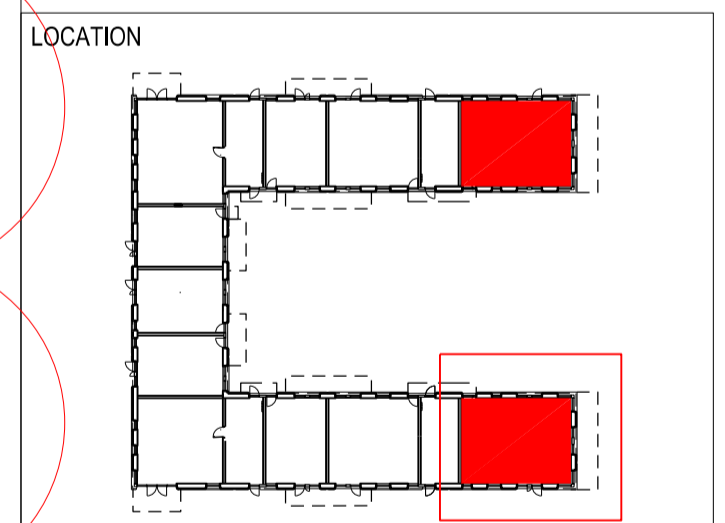
KEY

	COMMUNAL ENTRANCES
	INDIVIDUAL ENTRANCES
	SERVICE ENTRANCES

NOTE: INTERNAL LAYOUTS SHOWN FOR ILLUSTRATIVE PURPOSES ONLY
 Note: for landscape proposals and trees to be removed, refer to Landscape Architect's drawings:
 - Trees to be removed/retained - Refer to Arboriculturist Report and Drawing
 - Landscape GA – TM122L03

To be read in conjunction with DAS

REV	DATE	DETAIL	DRN	CHK
PL01	06.09.19	Draft MMA Submission	HD	AA
PL02	20.09.19	Draft MMA Submission	HD	AA
PL03	27.09.19	MMA Submission	HD	AA
PL04	24.10.19	Draft MMA Submission	HD	AA
PL05	07.11.19	Draft MMA Addendum	HD	AA
PL06	08.11.19	MMA Addendum	HD	AA
PL07	22.01.20	MMA Addendum	HD	AA



PROJECT TITLE
MAITLAND PARK

DRAWING TITLE
ASPEN COURT: SOCIAL ACCESSIBLE FLAT 2B4P

DATE	SCALE	
20/09/19	1:25 @ A1 1:50 @ A3	
STATUS	DRAWN	CHECKED
Planning	HD	WQ

DRAWING NUMBER	REVISION
MPI-P_4530	PL07

CULLINAN STUDIO
 5 BALDWIN TERRACE LONDON N1 7RU TEL: 020 7704 1975
 PROJECT EMAIL: mailand@cullinastudio.com

A	2 Bed - 4 Person Wheelchair Accessible Flat Plan
4530	1:25 @ A1 / 1:50 @ A3