

GROSS INTERNAL AREA = 75 m2

PLOT NUMBERS (REFER TO UNIT SCOPING DRAWING 1100):

AC_002
AC_010 (same but mirrored)

ROOM NAMES AND AREAS

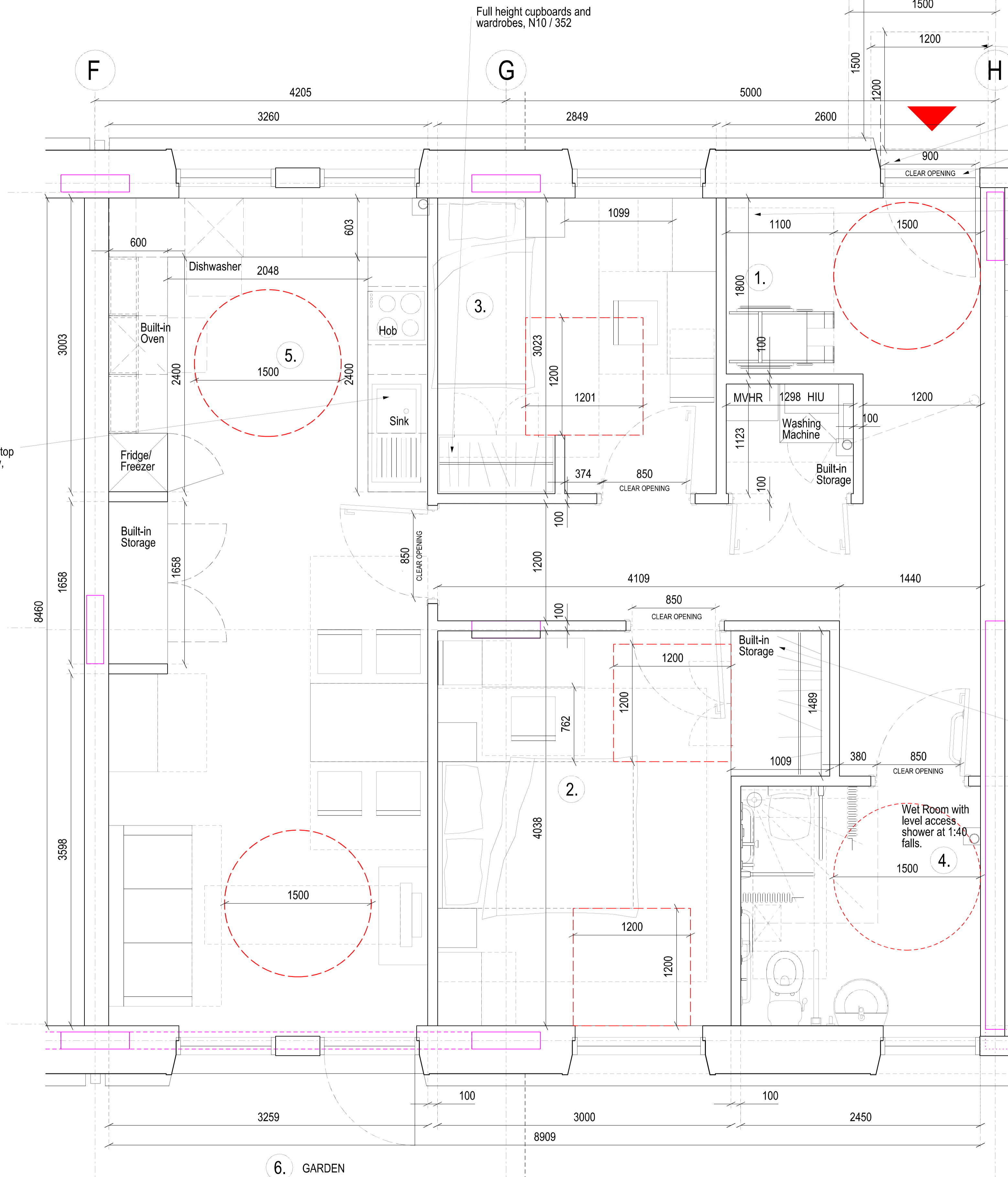
Min. Requirement

1. Wheelchair storage		
2. Principal Double Bedroom :	13.6 m2	13.5 m2
3. Single Bedroom :	8.6 m2	8.5 m2
4. Bathroom :	5.9 m2	
5. Kitchen, Dining & Living:	27.5 m2	27 m2
Kitchen Worktop :	6840 mm	6530 mm
Built-in Storage :	2.9 m2	7.0 m2
6. Outdoor Space: Garden	8 m2	2.5m2

KEY

	Structural Columns
	100mm diameter drainage downpipe (indicative locations)

Height adjustable or lowerable section of worktop with open leg room below, 2400x600mm.



1200 x 1200mm canopy.

A fused spur is required to the entrance flat door.

Self-closing door suitable for a wheelchair user.

Wall-mounted wheel chair charger is recommended in this location.

A power socket will be within the wheelchair storage area/ transfer space. Refer to the M&E electrical drawings and specification.

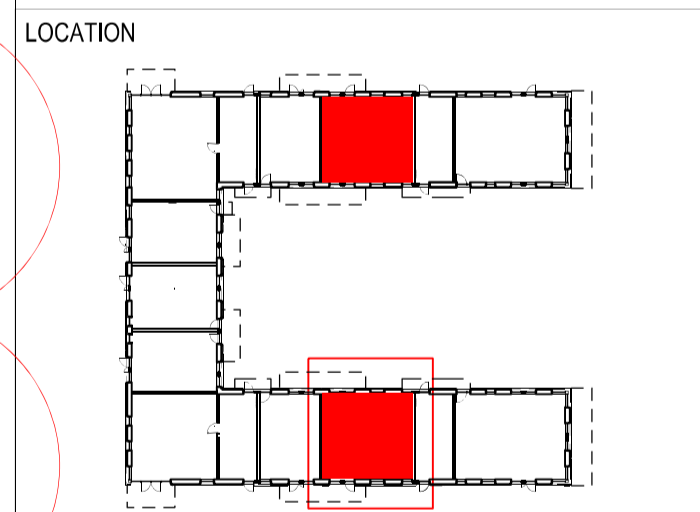
Full height cupboards and wardrobes, N10 / 352

SAFETY, HEALTH AND ENVIRONMENTAL INFORMATION:	
IN ADDITION TO THE HAZARDS / RISKS NORMALLY ASSOCIATED WITH THE TYPES OF WORK DETAILLED ON THE DRAWINGS, NOTE THE FOLLOWING:	
Significant Residual Risks:	
Action to be Taken:	
Refer to Health and Safety Plan	

NOTES:

- For internal door schedule refer MPI-22-22-SC-A-1900
- For GA plans refer 2000 series
- For circulation core drawings refer 4600 series
- For external works/landscaping refer L.A information
- For unit plans refer 1100 series
- For accommodation schedule refer MPI_ZZ_ZZ_SC_A_1900

REV	DATE	DETAIL	DRN	CHK
PL01	6.08.19	Draft MMA Submission	HD	AA
PL02	20.09.19	Draft MMA Submission	HD	AA
PL03	27.09.19	MMA Planning Submission	HD	AA
PL04	24.10.19	Draft MMA Planning Submission	HD	AA
PL05	07.11.19	Draft MMA Addendum	HD	AA
PL06	08.11.19	MMA Addendum	HD	AA



PROJECT TITLE
MAITLAND PARK

DRAWING TITLE
ASPEN COURT: SOCIAL ACCESSIBLE FLAT 2B3P

DATE 20/09/19	SCALE 1:25 @ A1 1:50 @ A3
STATUS Planning	DRAWN HD
	CHECKED WQ

DRAWING NUMBER MPI-P_4520	REVISION PL06
-------------------------------------	-------------------------

CULLINAN STUDIO
5 BALDWIN TERRACE LONDON N1 7RU TEL: 020 7704 1975
PROJECT EMAIL: mailand@cullinastudio.com

A	2 Bed - 3 Person Wheelchair Accessible Flat Plan
4520	1:25 @ A1 / 1:50 @ A3