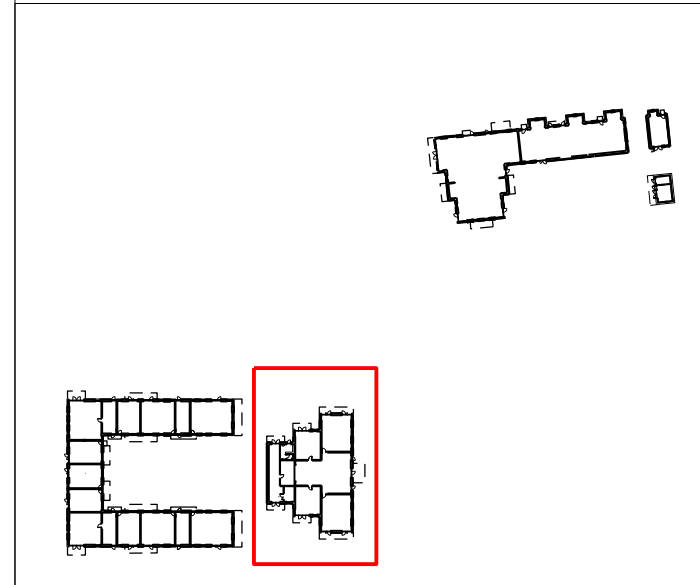


SAFETY, HEALTH AND ENVIRONMENTAL INFORMATION:	
IN ADDITION TO THE HAZARDS / RISKS NORMALLY ASSOCIATED WITH THE TYPES OF WORK DETAILLED ON THE DRAWING, NOTE THE FOLLOWING:	
Significant Residual Risk:	
Action to be Taken:	
Refer to Health and Safety Plan	

NOTES:
 FOR FULL ACCOMMODATION SCHEDULE REFER TO:
 MPI_ZZ_ZZ_SC_A_1900

REV	DATE	DETAIL	DRN	CHK
PL01	25.08.17	MMA Planning Submission	HD	AA
PL02	08.09.19	Draft MMA Planning Submission	HD	AA
PL03	20.09.19	Draft MMA Planning Submission	HD	AA
PL04	27.09.19	MMA Planning Submission	HD	AA
PL05	24.10.19	Draft MMA Planning Submission	HD	AA
PL06	07.11.19	Draft MMA Addendum	HD	AA
PL07	08.11.19	MMA Addendum	HD	AA
PL08	13.02.20	MMA Addendum	HD	AA



PROJECT TITLE
MAITLAND PARK

DRAWING TITLE
**ASPEN VILLAS:
 UNIT AREA SCOPING PLAN
 MMA - 2019**

DATE 20.09.2019	SCALE 1:500 @ A3 1:250 @ A1
STATUS PLANNING	DRAWN HD
	CHECKED AA

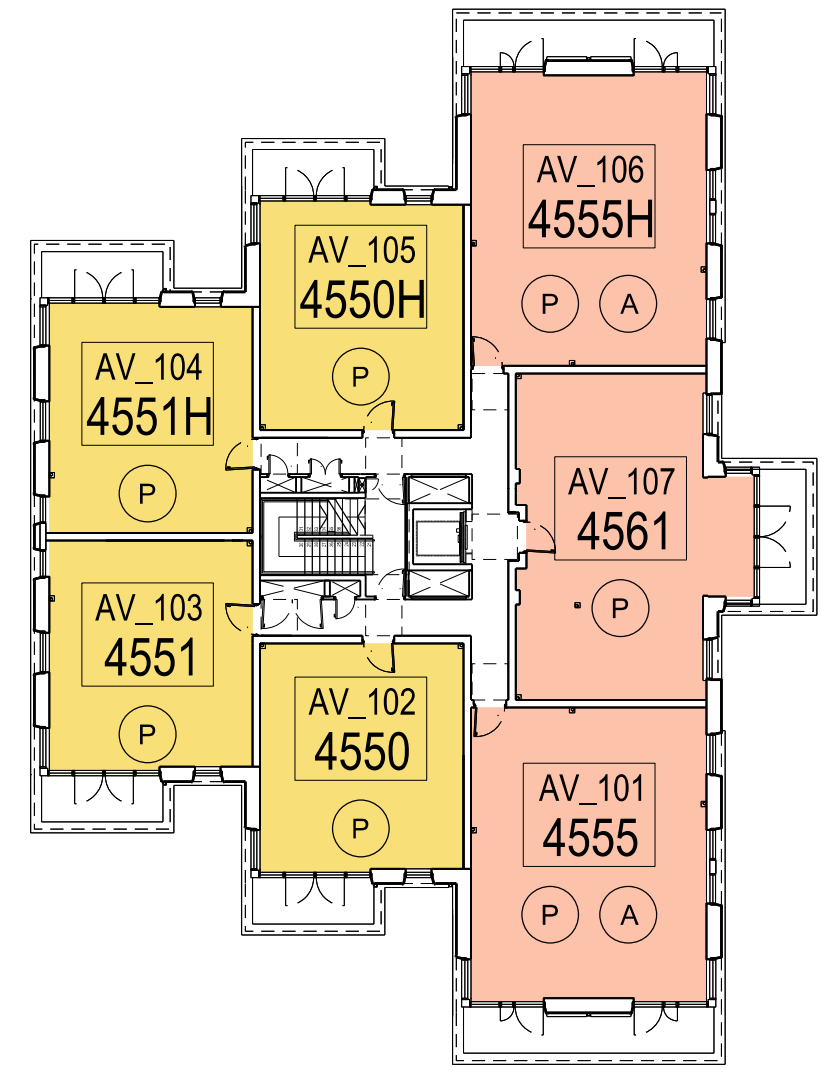
DRAWING NUMBER MPI-P_501	REVISION PL08
------------------------------------	-------------------------

CULLINAN STUDIO
 5 BALDWIN TERRACE LONDON N1 7RU TEL: 020 7704 1975
 PROJECT EMAIL: maitland@cullinanstudio.com

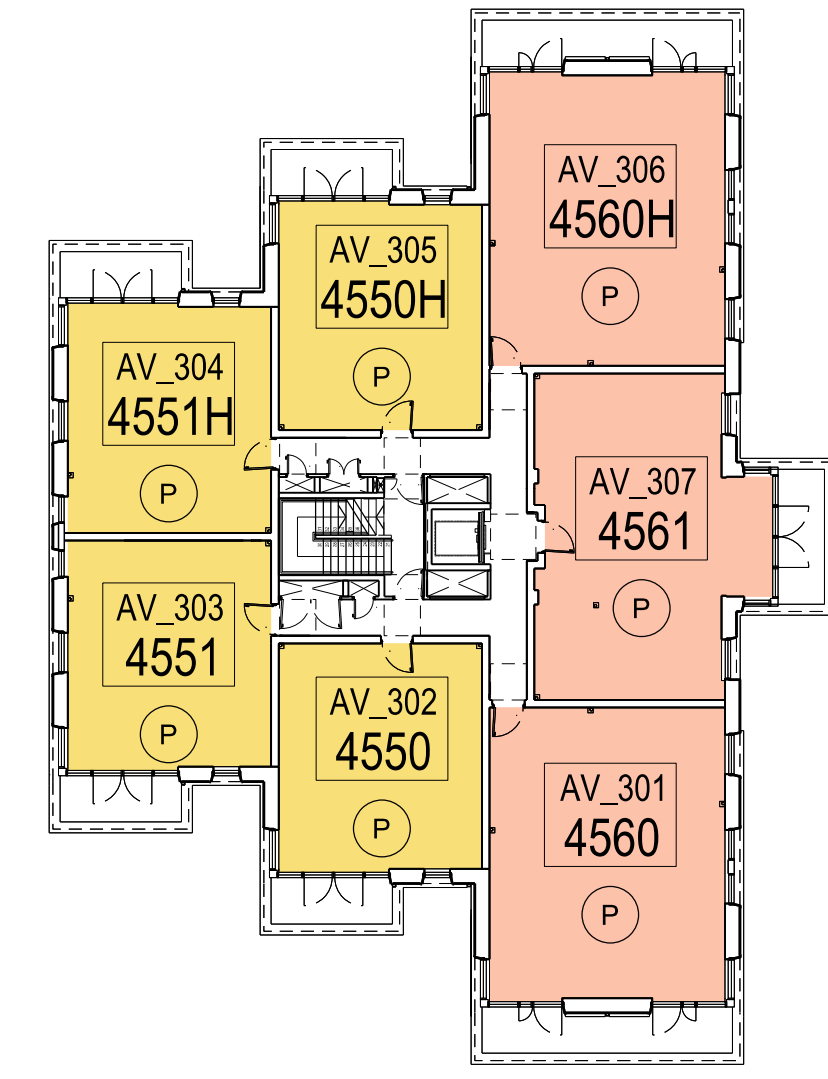
Note. ALL PRIVATE UNITS

no.	KEY
22	1 bed 2 person unit
0	2 bed 3 person unit
17	2 bed 4 person unit
0	3 bed 5 person unit
-	4 bed 5 person unit
-	4 bed 6 person unit
total 39	

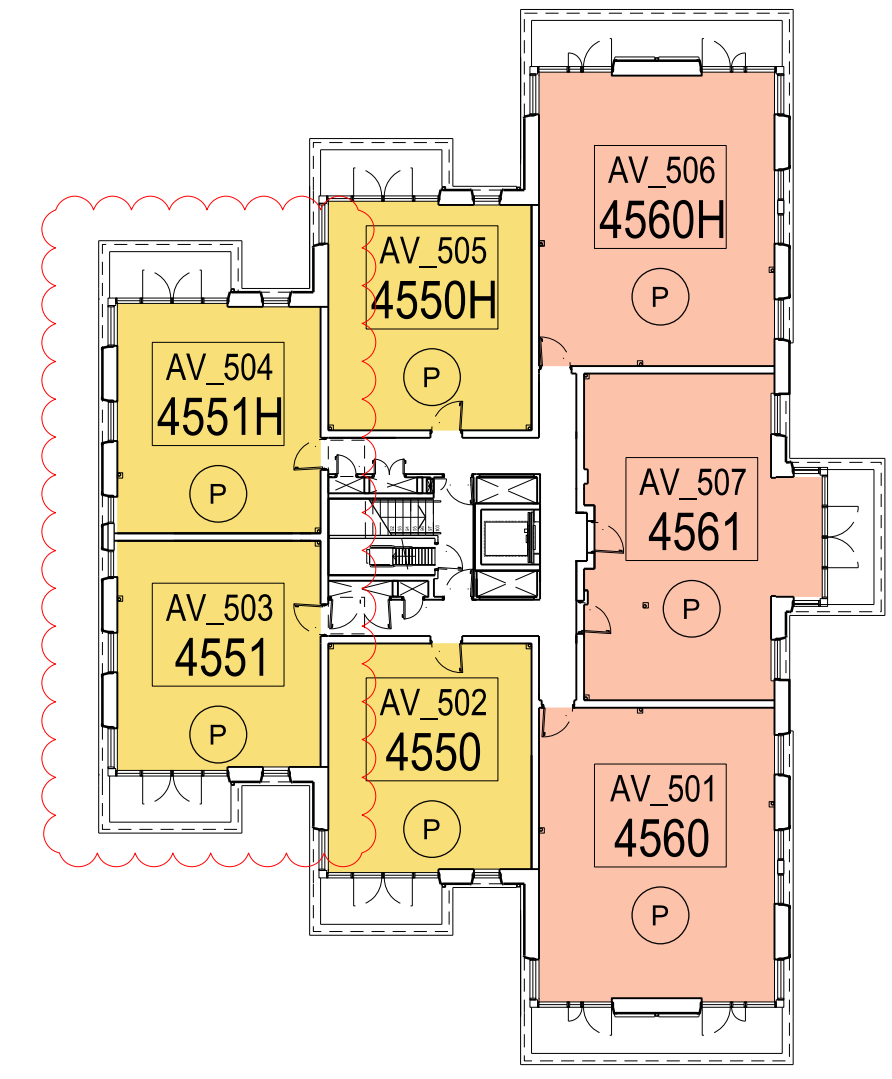
- TRA Hall
- Plant/Service
- (A) Adaptable Wheelchair
- (W) Accessible Wheelchair
- (P) Private Tenure (if not noted then assume Social rent tenure)
- Block ID
- AC 01 Plot No.
- 45xx Sheet Number
- Entrance location



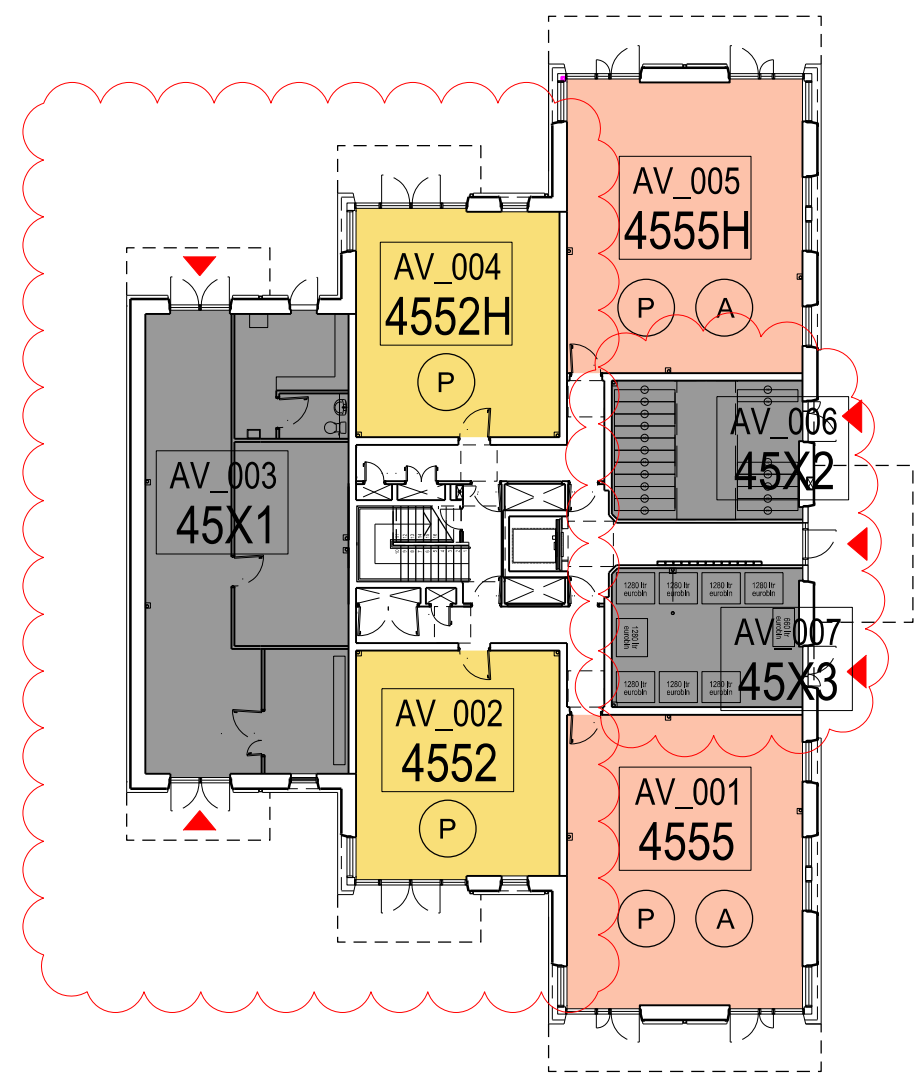
B FIRST FLOOR PLAN
1101



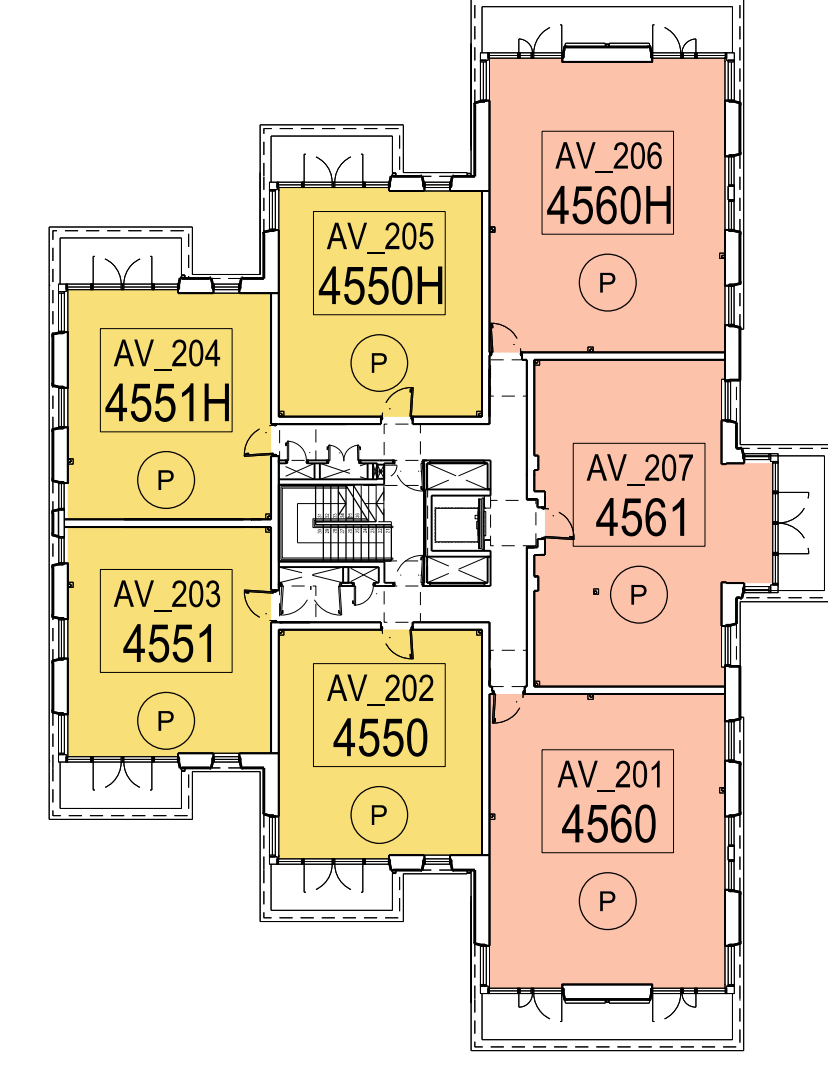
D THIRD FLOOR PLAN
1101



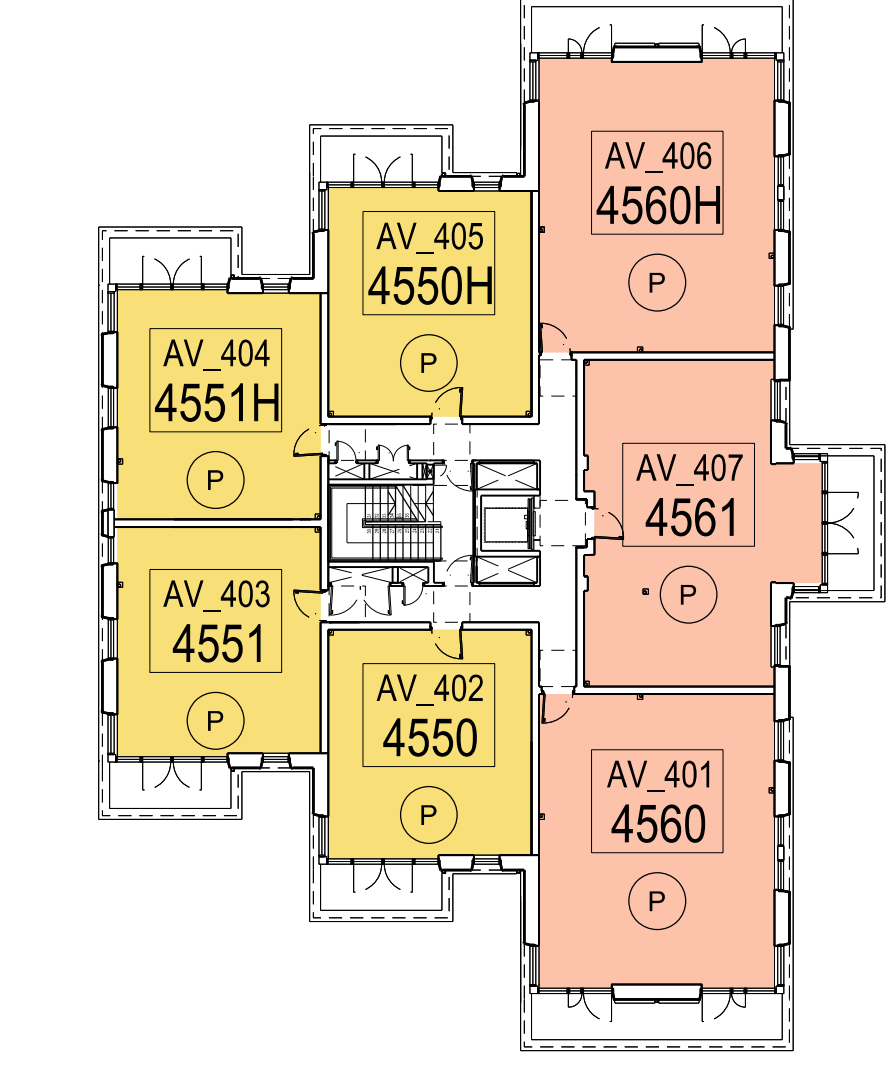
F FIFTH FLOOR PLAN
1101



A GROUND FLOOR PLAN
1101



C SECOND FLOOR PLAN
1101



E FOURTH FLOOR PLAN
1101