

SAFETY, HEALTH AND ENVIRONMENTAL INFORMATION:
 IN ADDITION TO THE HAZARDS / RISKS
 NORMALLY ASSOCIATED WITH THE TYPES
 OF WORK DETAILLED ON THE DRAWING,
 NOTE THE FOLLOWING:
 Significant Residual Risk:
 Action to be Taken:
 Refer to Health and Safety Plan

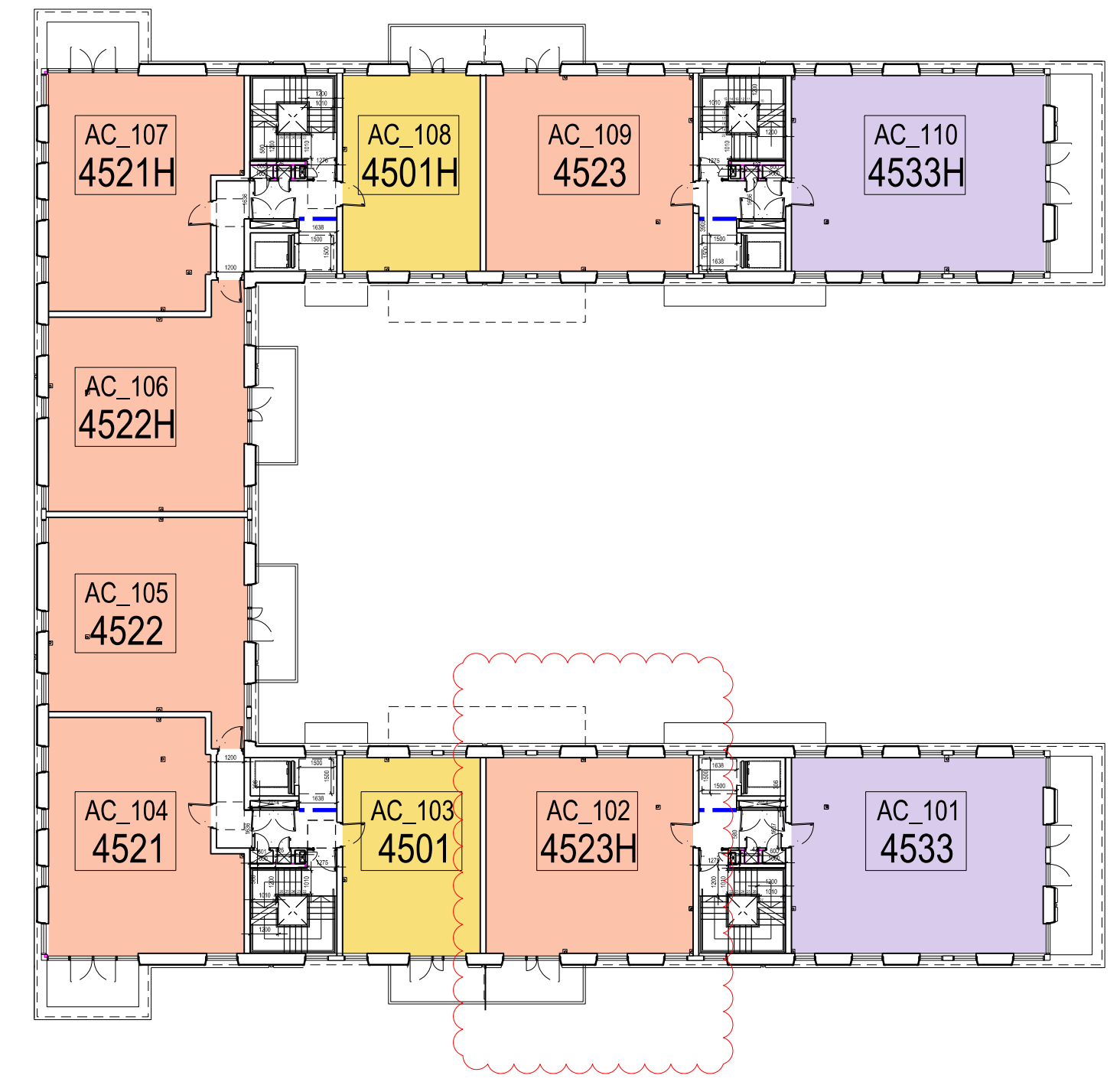
NOTES:
 FOR FULL ACCOMMODATION SCHEDULE
 REFER TO:
 MPI_ZZ_SC_A_1900

REV	DATE	DETAIL	DRN	CHK
PL01	25.06.17	MMA Planning Submission	HD	AA
PL02	09.09.19	Draft MMA Planning Submission	HD	AA
PL03	20.09.19	Draft MMA Planning Submission	HD	AA
PL04	27.09.19	MMA Planning Submission	HD	AA
PL05	24.10.19	Draft MMA Planning Submission	HD	AA
PL06	07.11.19	Draft MMA Addendum	HD	AA
PL07	08.11.19	MMA Addendum	HD	AA
PL08	13.02.20	MMA Addendum	HD	AA

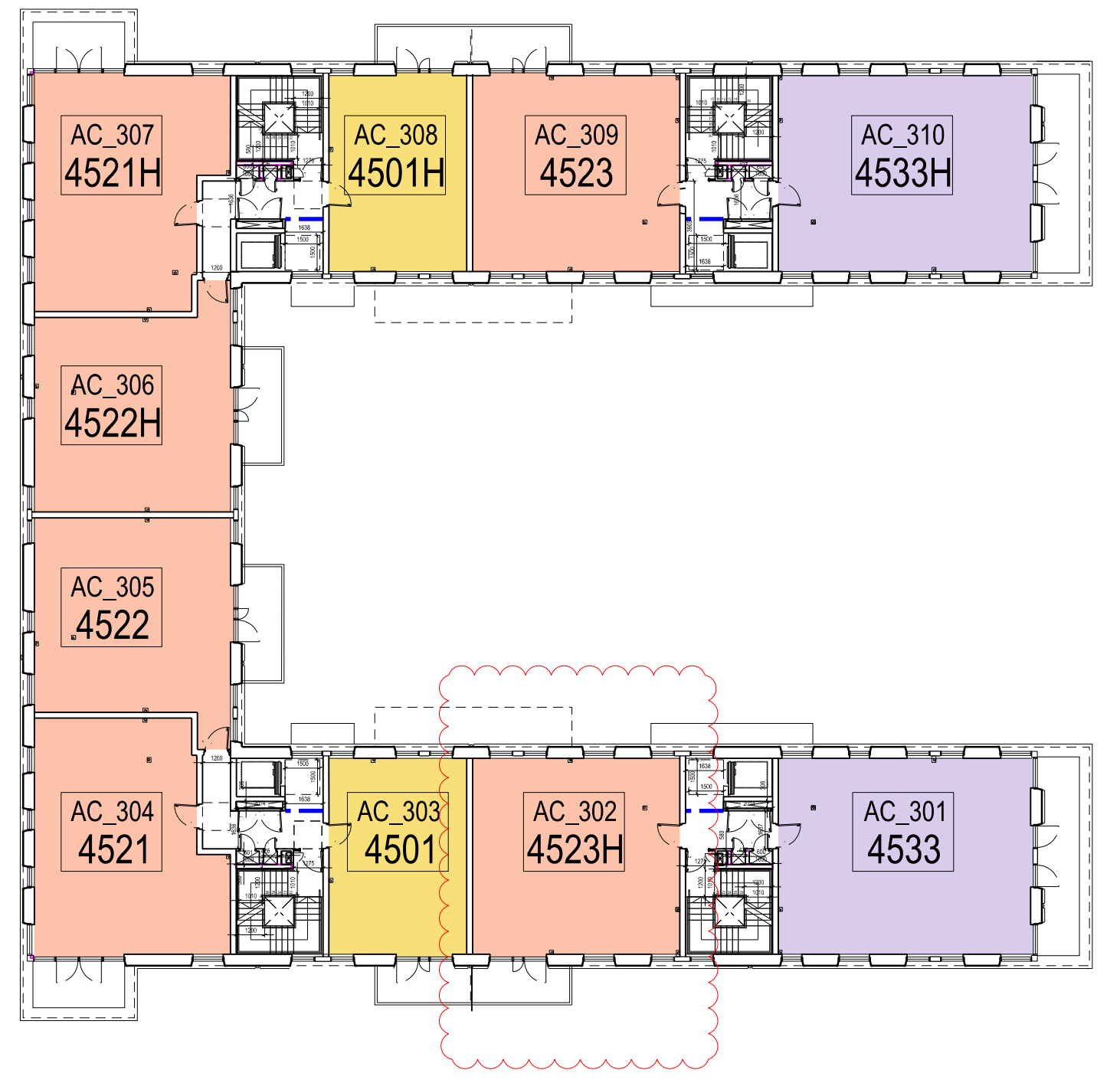
Note. ALL SOCIAL UNITS

no.	KEY
13	1 bed 2 person unit
3	2 bed 3 person unit
29	2 bed 4 person unit
6	3 bed 5 person unit
-	4 bed 5 person unit
-	4 bed 6 person unit
total	51

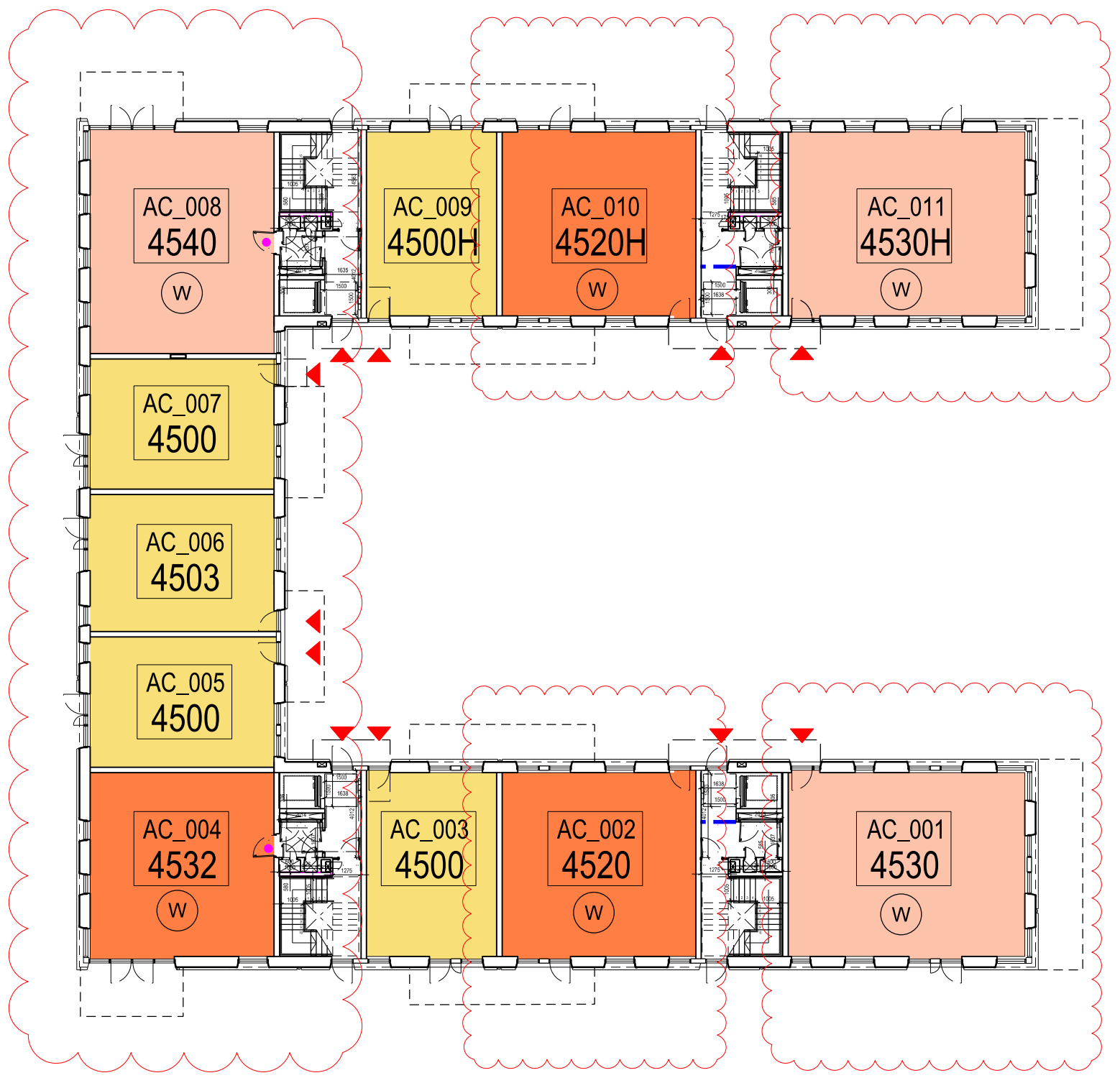
TRA Hall
Plant/Service
(A) Adaptable Wheelchair
(W) Accessible Wheelchair
(P) Private Tenure (if not noted then assume Social rent tenure)
Block ID
AC 01 Plot No.
45xx Sheet Number
Entrance location



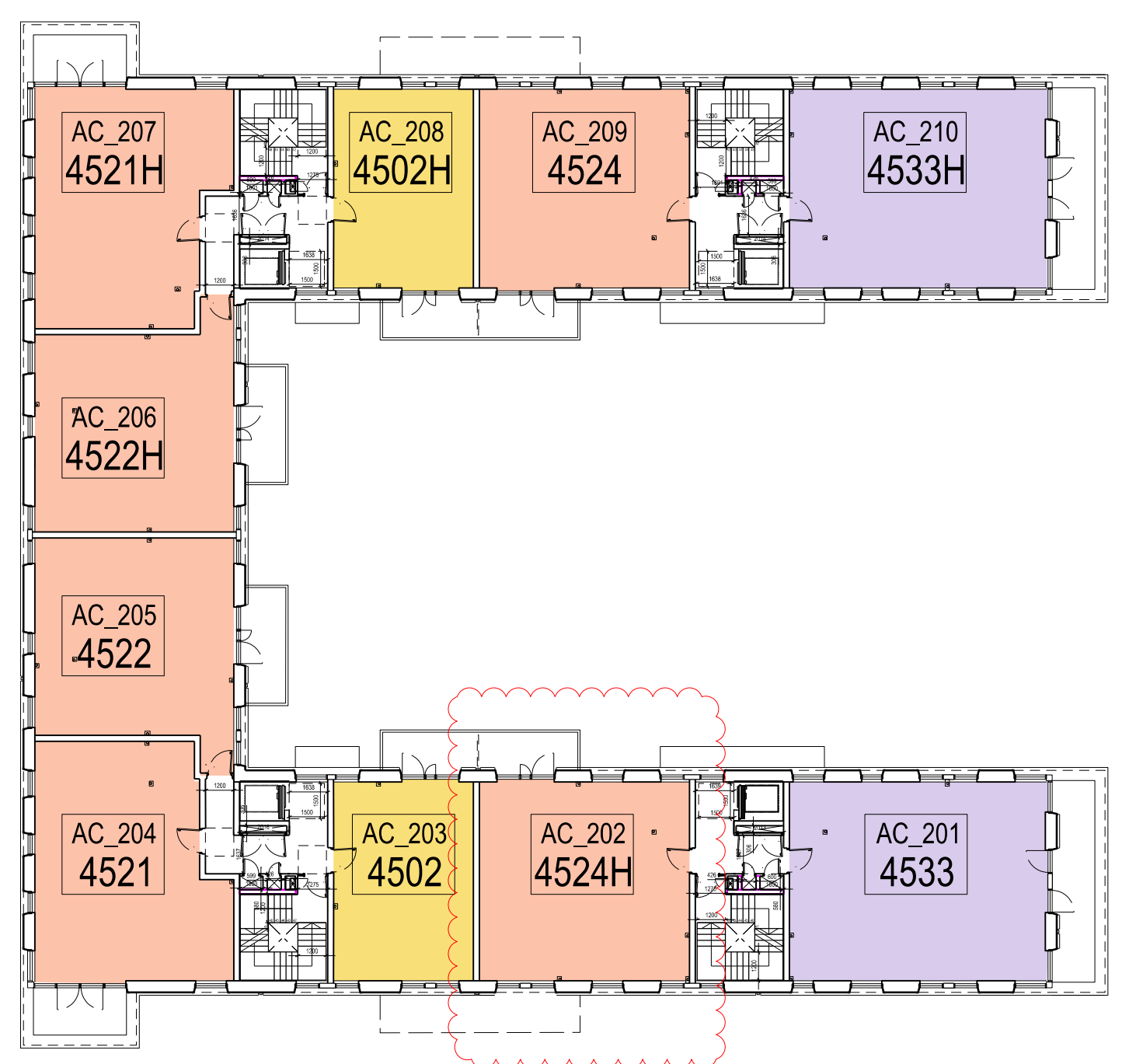
B FIRST FLOOR PLAN
1100



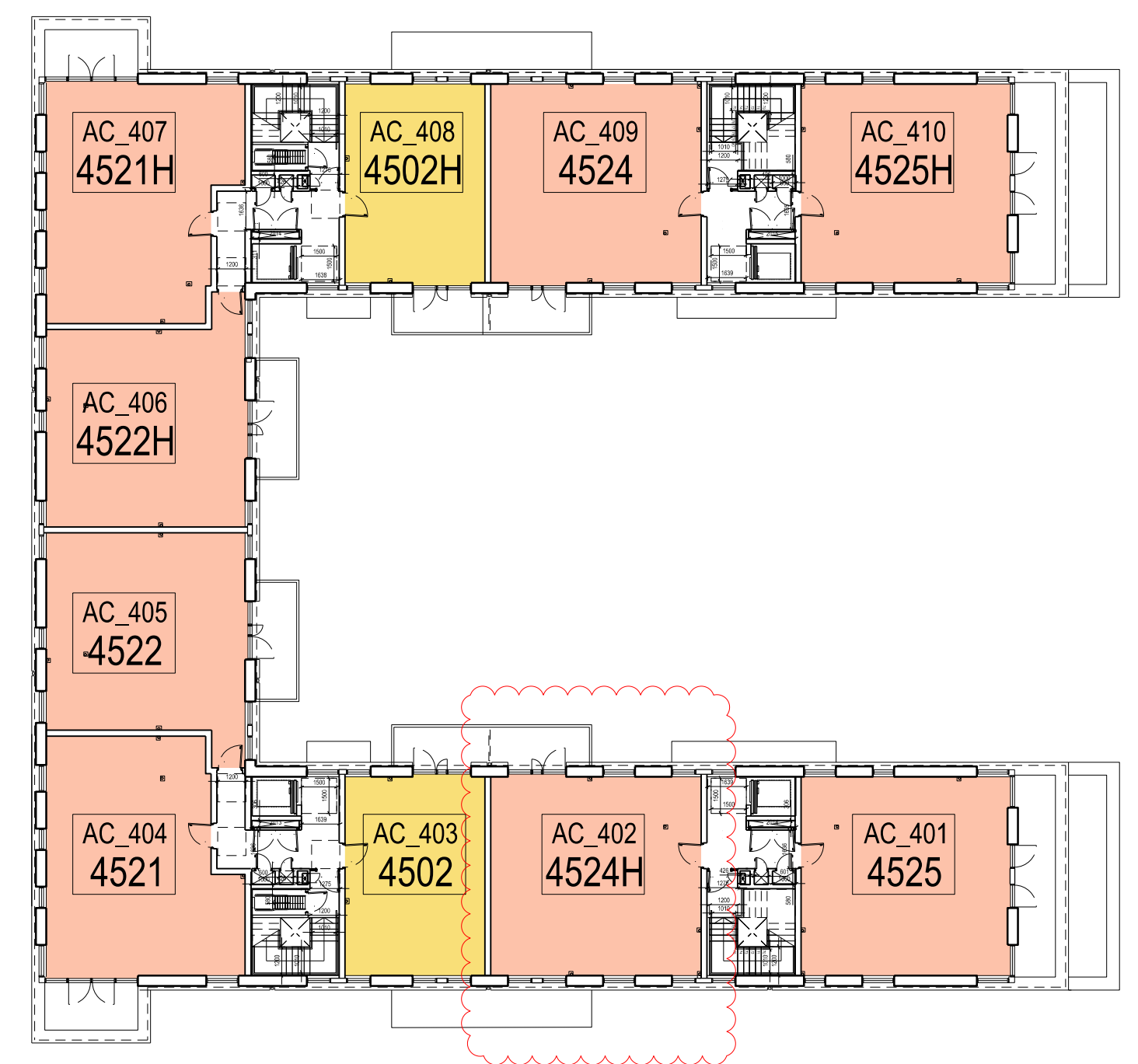
D THIRD FLOOR PLAN
1100



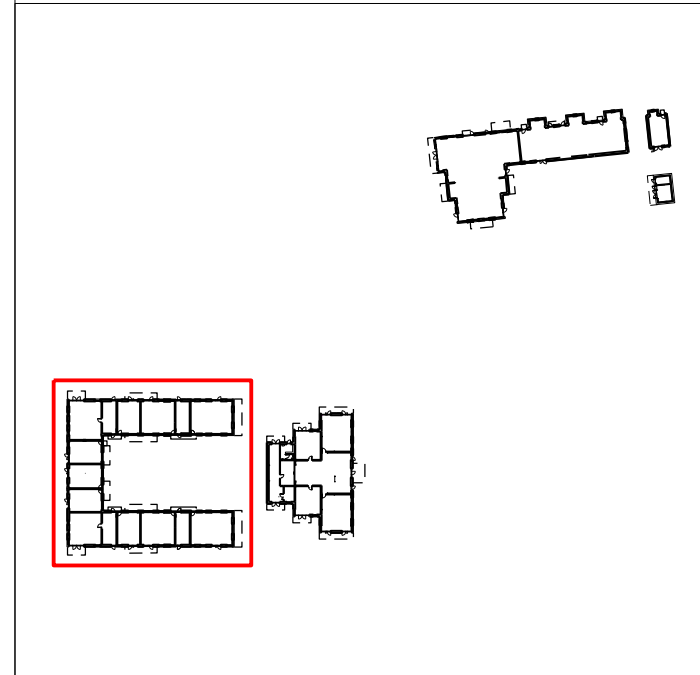
A GROUND FLOOR PLAN
1100



C SECOND FLOOR PLAN
1100



E FOURTH FLOOR PLAN
1100



PROJECT TITLE
 MAITLAND PARK

DRAWING TITLE
 ASPEN COURT:
 UNIT AREA SCOPING PLAN
 MMA - 2019

DATE	20.09.2019	SCALE	1:500 @ A3 1:250 @ A1
STATUS	PLANNING	DRAWN	HD
		CHECKED	AA

DRAWING NUMBER
 MPI-P_500

REVISION
 PL08

CULLINAN STUDIO
 5 BALDWIN TERRACE LONDON N1 7RU TEL: 020 7704 1975
 PROJECT EMAIL: mailand@cullinastudio.com