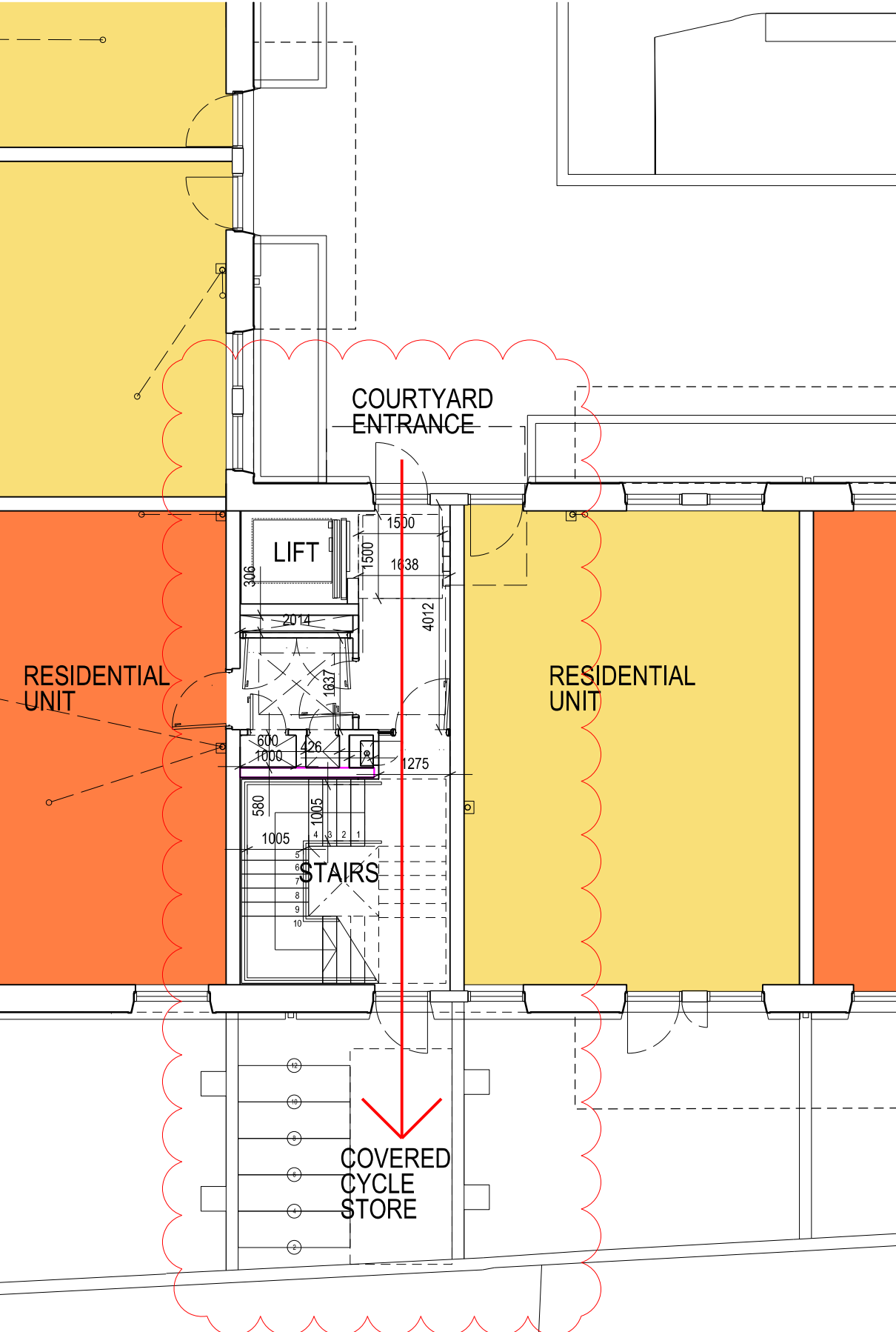
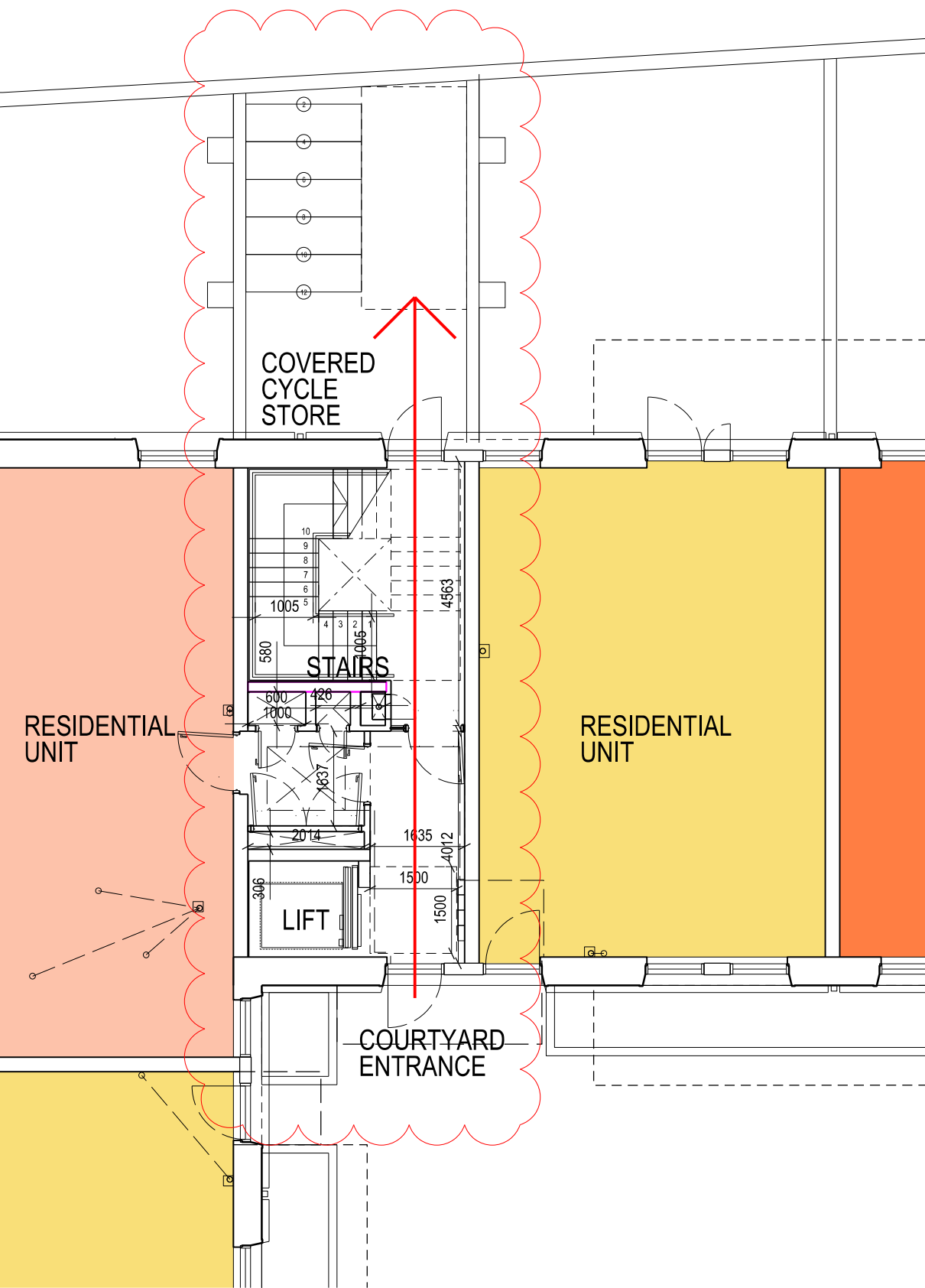
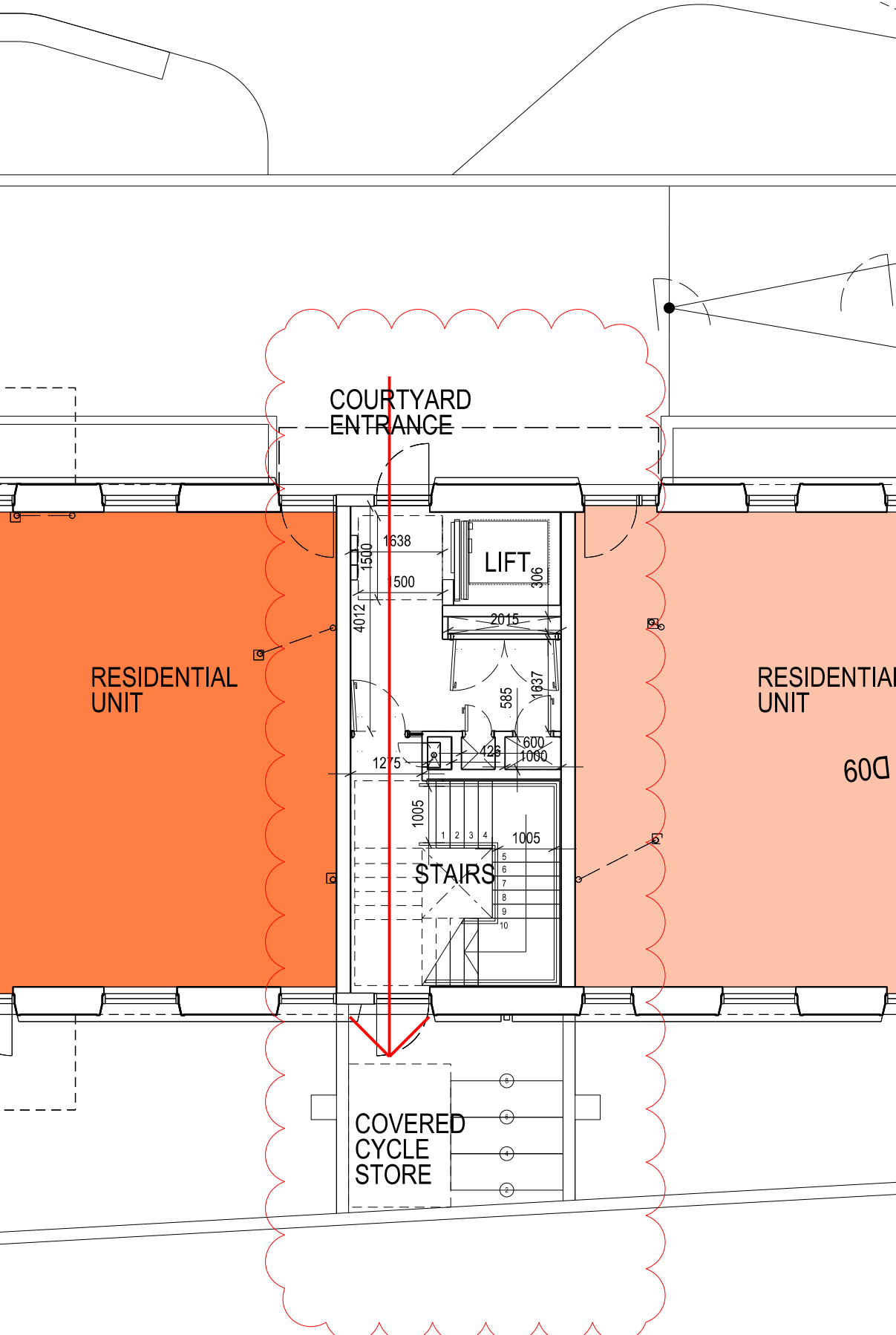
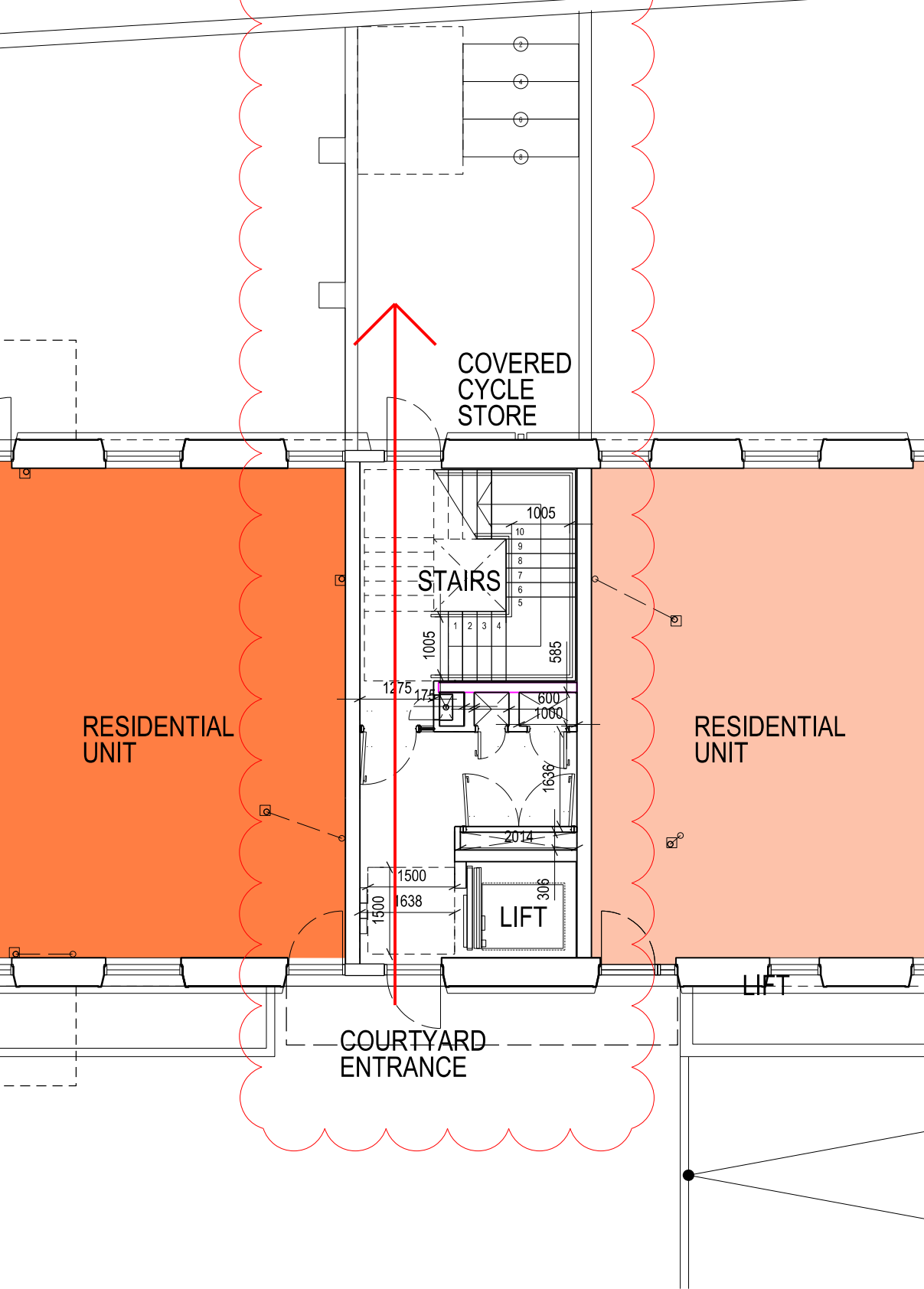


C1 ASPEN COURT - NORTH EAST



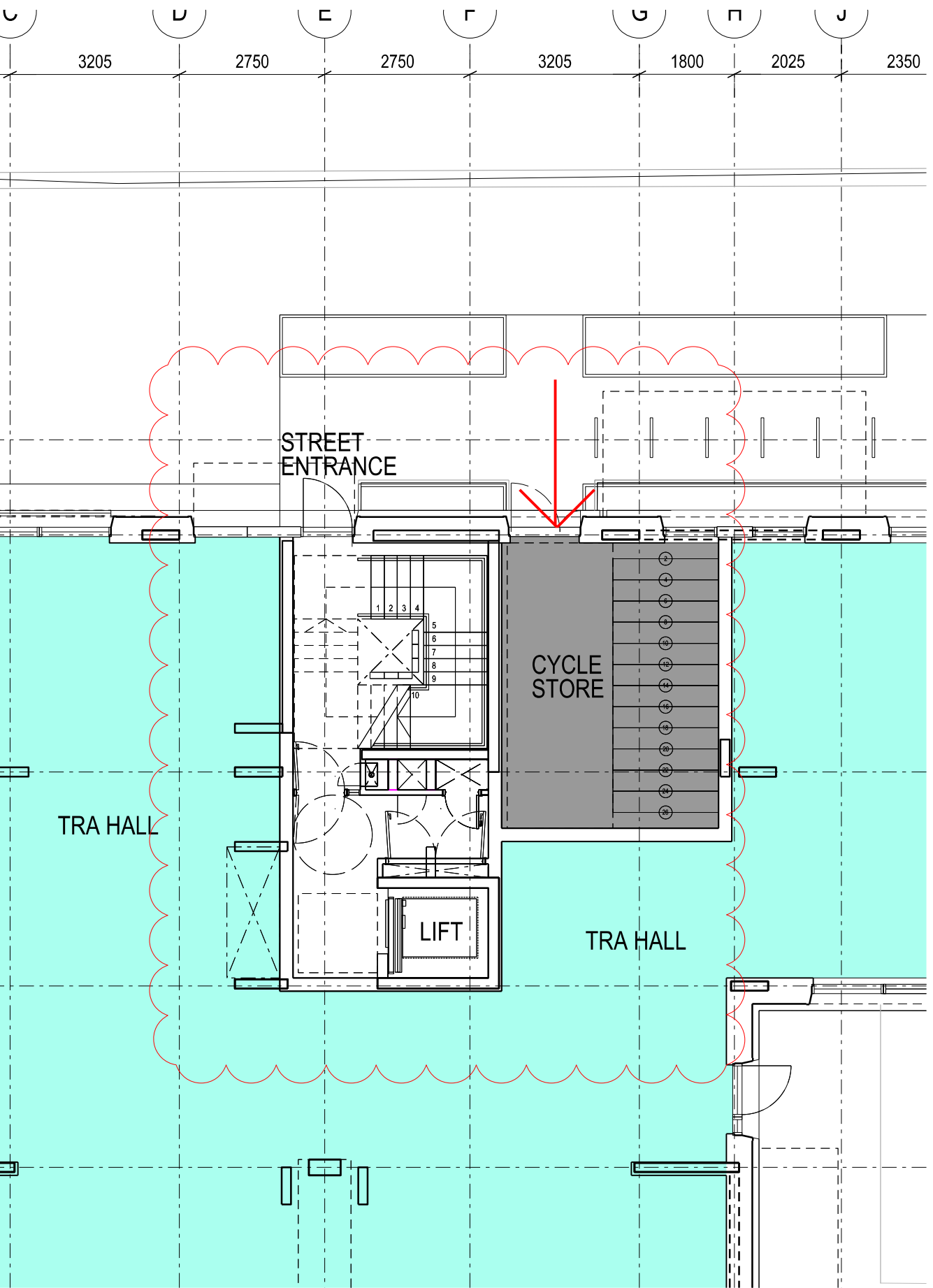
C3 ASPEN COURT - SOUTH EAST

C2 ASPEN COURT - NORTH WEST

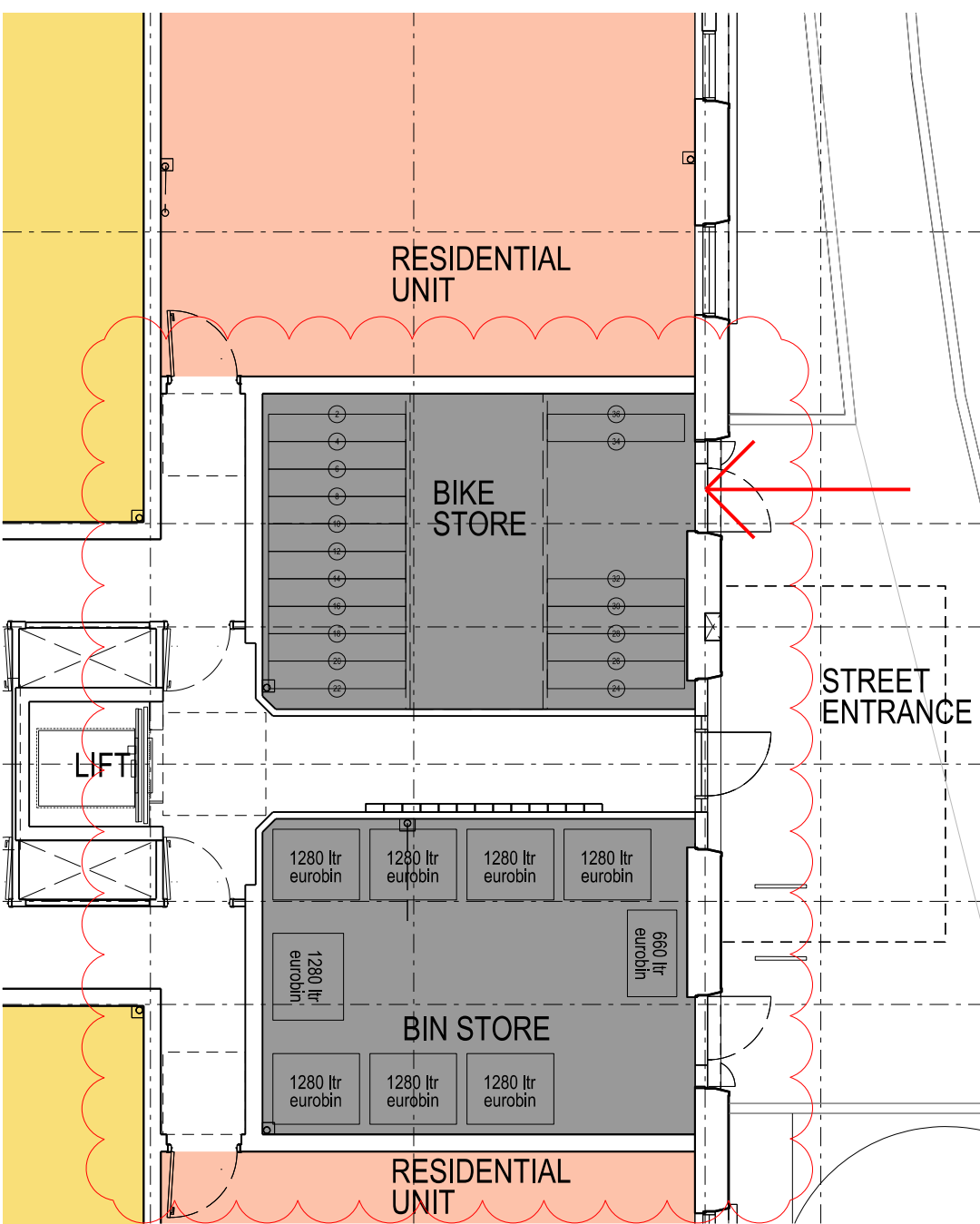


C4 ASPEN COURT - SOUTH WEST

C6 GRAFTON TERRACE



C5 ASPEN VILLA



SAFETY, HEALTH AND ENVIRONMENTAL INFORMATION:	
IN ADDITION TO THE HAZARDS / RISKS IDENTIFIED IN THE PREVIOUS DRAUGHTS, THE FOLLOWING HAVE BEEN IDENTIFIED IN THIS DRAUGHT. NOTE THE FOLLOWING: THIS DRAWING.	
Significant Residual Risks:	
Action to be Taken:	
Refer to Health and Safety Plan	

NOTES:

REFER TO PLANNING DRAWINGS FOR LOCATIONS: P10, P20 & P30

THESE DRAWING HAVE BEEN PREPARED IN ACCORDANCE WITH CAMDEN POLICY

CAMDEN POLICY GUIDANCE TRANSPORT 7:

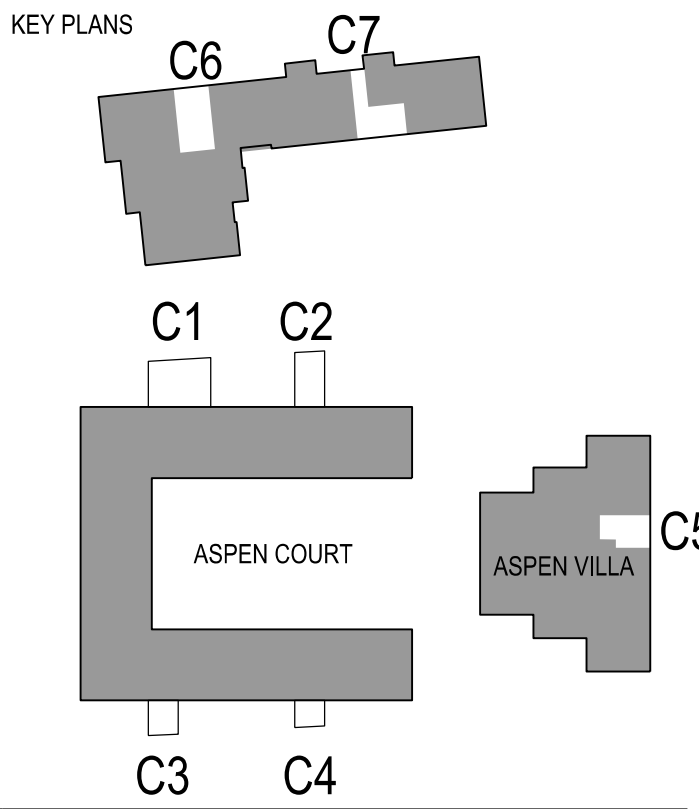
REFER TO AREA SCHEDULE IN DAS FOR QUANTITY OF ONSITE ALLOCATIONS

Item 9 Cycling Facilities:

- Cycle parking is provided off-street, within the boundary of the site.
- It is covered, accessible and secure
- The route to cycle parking from street level is step free at the entrance level of the building
- The Josta two tier cycle parking with a headroom of 2500mm has been used (or similar approved)
- The Josta two tier cycle parking with a headroom of 2700mm has been used (or similar approved) in layout C5/C6/C7.

Ground floor units assumed to keep cycles within their dwellings or gardens

REV	DATE	DETAIL	DRN	CHK
PL03	30.10.14	Door position to Grafton Terrace communal entrance adjusted to suit Secure by Design Requirements. Canopies added to Grafton Terrace.	AA	KR
PL04	08.01.15	Entrance to Aspen Villa amended	GN	AA
PL05	02.03.17	MMA Planning Submission	KR	AA
PL06	06.05.19	Draft MMA Submission	KR	AA
PL07	20.09.19	Draft MMA Submission	KR	AA
PL08	27.09.19	MMA Planning Submission	HD	AA
PL09	24.10.19	Draft MMA Planning Submission	HD	AA
PL10	07.11.19	Draft MMA Addendum	HD	AA
PL11	08.11.19	MMA Addendum	HD	AA



PROJECT TITLE		
MAITLAND PARK		
DRAWING TITLE		
ASPEN COURT ASPEN VILLA GRAFTON TERRACE CYCLE STORAGE LAYOUT - MMA 2019		
DATE	SCALE	
20/09/2019	1:100 @ A1 1:200 @ A3	
STATUS	DRAWN	CHECKED
PLANNING	HD	AA

DRAWING NUMBER	REVISION
MPI-P_150	PL11

CULLINAN STUDIO
5 BALDWIN TERRACE LONDON N1 7RU TEL: 020 7704 1975
PROJECT EMAIL: mailand@cullinstudio.com