

ALL HEIGHTS ABOVE AOD.  
NOT FOR APPROVAL. FOR INDICATIVE PURPOSES ONLY

SAFETY, HEALTH AND ENVIRONMENTAL INFORMATION:	
IN ADDITION TO THE HAZARDS / RISKS IDENTIFIED AND ASSOCIATED WITH THE TYPES OF WORK DETAILLED ON THE DRAWINGS, NOTE THE FOLLOWING:	
Significant Residual Risks:	
Action to be Taken:	
Refer to Health and Safety Plan	

NOTES:

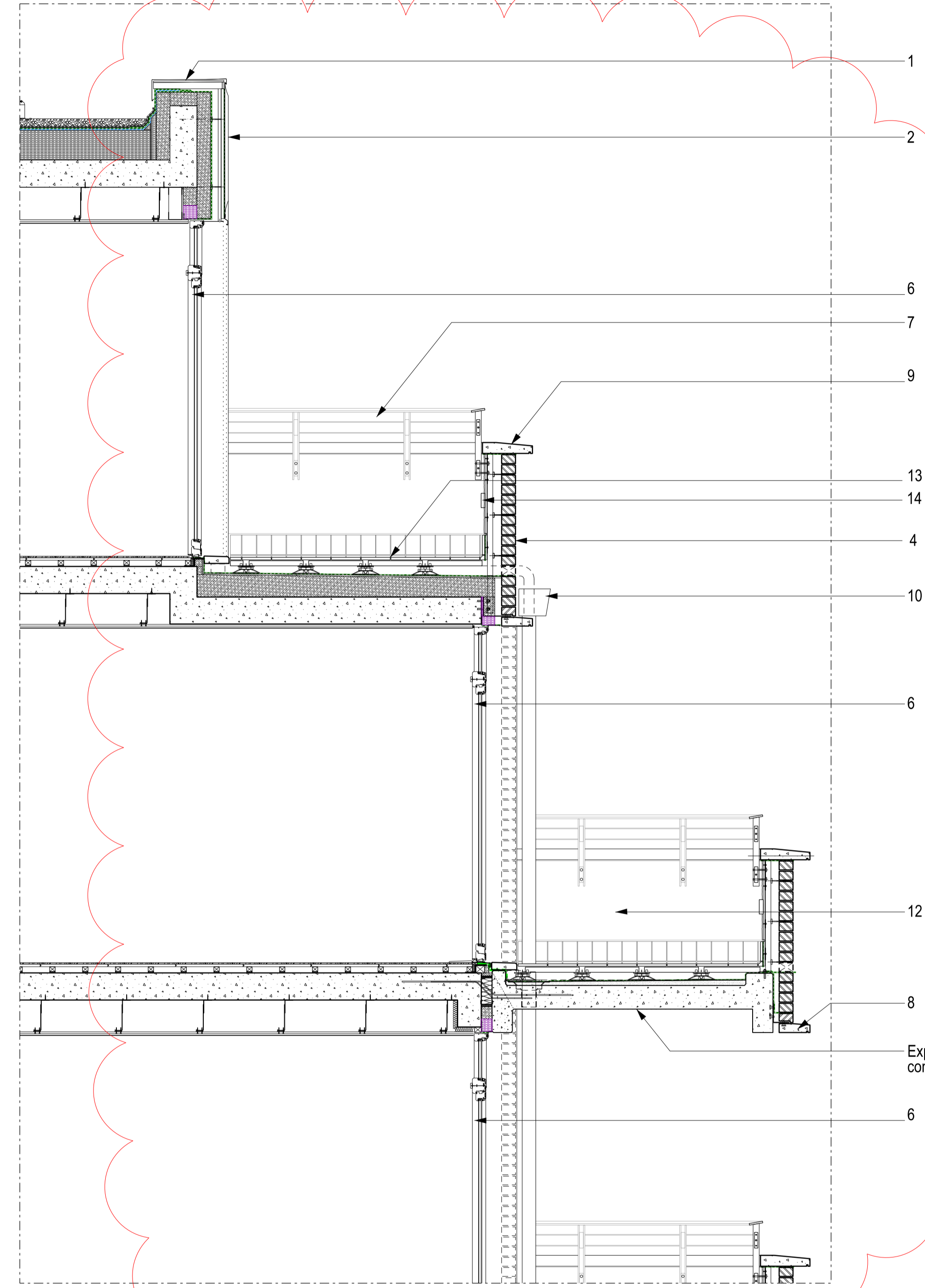
**KEY**

1. Pre oxidised copper coloured metal coping
2. Horizontal band of Pre oxidised copper coloured metal standing seam cladding
3. Vertical standing seam pre oxidised copper coloured metal cladding
4. Half lap stretcher bond brick (Randers TEGL RT 102 or similar approved) & pale grey mortar
5. Herringbone bond brick (Randers TEGL RT 102 or similar approved) & pale grey mortar.
6. Dark coloured metal clad composite windows, doors and spandrel panels
7. PPC steel flat balustrade
8. Pre cast white concrete to head of windows & doors within Herringbone coursing
9. Pre-cast white concrete sills & copings
10. Copper rainwater downpipes and hoppers
11. Half Lap Bond Ketley Brown Brindle Brick Base or similar approved with dark grey mortar.
12. White Render Finish to Balcony Upstand
13. Composite decking boards to balconies
14. L.L Light
15. Metal MVHR intake / extract grilles (PPC to match brickwork)
16. PPC dark coloured metal sliding single glazing to winter garden
17. PPC dark coloured metal canopy
18. Binstores, garden walls as item 11 - refer Landscape Architect's information
19. Moveable or fixed dark coloured perforate metal screens to TRA Hall (pre-oxidised copper coloured).
20. Moveable or fixed pre-oxidised copper coloured perforate metal screens to TRA Hall.
21. Pre-oxidised copper coloured metal acoustic screen to rooftop plant.

REV	DATE	DETAIL	DRN	CHK
PL03	20/11/14	UPDATED FOLLOWING PLANNING COMMENTS	GN	WR
PL04	01/12/14	UPDATED FOLLOWING PLANNING COMMENTS	GN	WR
PL05	25/01/17	MMA Planning Submission	HD	AA
PL06	06/05/19	Draft MMA Planning Submission	HD	AA
PL07	20/09/19	Draft MMA Planning Submission	HD	AA
PL08	27/09/19	MMA Planning Submission	HD	AA
PL09	24/10/19	Draft MMA Planning Submission	HD	AA
PL10	07/11/19	Draft MMA Assentum	HD	AA
PL11	08/11/19	MMA Assentum	HD	AA



A Entrance Elevation to Aspen Court  
P\_100 1:50



B Part Section  
P\_100 1:25



C Material References  
P\_100 NTS



Key Ref No. 4/5 Randers Tegl RT102 (or similar) light brick with light grey mortar



Key Ref No. 4 Half lap stretcher bond



Key Ref No. 5 Herringbone Brick Coursing



Key Ref No. 3. Pre-oxidised copper coloured standing seam cladding



Key Ref No. 6. Dark coloured metal clad composite doors and windows

PROJECT TITLE  
**MAITLAND PARK**

DRAWING TITLE  
**Aspen Court Scoping Section + Elevation Sheet 1 - MMA 2019**

DATE 20/09/2019	SCALE 1:25 @ A1 1:50 @ A3
STATUS PLANNING	CHECKED AA

DRAWING NUMBER <b>MPI- P_100</b>	REVISION <b>PL11</b>
-------------------------------------	-------------------------

**CULLINAN STUDIO**  
5 BALDWIN TERRACE LONDON N1 7RU TEL: 020 7704 1975  
PROJECT EMAIL: mailand@cullinastudio.com

© CULLINAN STUDIO LTD 2017