

TREES			
Name	Girth	Height	
T1 Liquidamber styraciflua	30-35cm	min. 6m	
T2 Liquidamber styraciflua	20-25cm	min. 4.5m	
T3 Sorbus aria 'Luesscens'	20-25cm	min. 4.5m	
T4 Prunus serrulata 'Kanzan'	20-25cm	min. 4m	
T5 Acer rubrum	20-25cm	min. 4.5m	
T6 Acer platanoides 'Emerald Queen'	20-25cm	min. 4.5m	
T7 Prunus avium 'Plena'	20-25cm	min. 4m	
T8 Tilia cordata 'Greenspire'	20-25cm	min. 4.5m	
T9 Pyrus calleryana 'Chanticleer'	20-25cm	min. 4.5m	
T10 Sorbus aucuparia	20-25cm	min. 4m	
T11 Acer platanoides	20-25cm	min. 4.5m	
T12 Betula utilis 'Jaquemontii'	Multi-stem	min. 4m	

All trees to be underground guyed and installed with aeration and irrigation pipes

PLANTING			
Name	Size	Density	%age
H1 Cornus alba 'Aurea'	5l	5/m2	100%
PL1 Alchemilla mollis	2l	7/m2	10%
Anemone x hybrida 'Honorine Jobert'	2l	6/m2	10%
Cornus stolonifera 'Flavireama'	5l	5/m2	20%
Miscantus sinensis 'Kielme Fontane'	2l	6/m2	20%
Perovskia 'Blue spire'	2l	6/m2	10%
Rudbeckia fulgida	2l	8/m2	5%
Stipa tenuissima	2l	6/m2	20%
Verbena bonariensis	2l	5/m2	5%
Allium 'Globemaster'	8+ (topsize) 15 m/2		
Narcissus sp.	7+ (topsize) 30/m2		
PL2 Alchemilla mollis	2l	6 m/2	20%
Cornus alba 'Aurea'	5l	5/m2	50%
Anemone x hybrida 'Whirlwind'	2l	6/m2	15%
Hakonechloa macro 'Aureola'	2l	6/m2	15%
PL3 Anemone x hybrida 'Honorine Jobert'	3-4l	5 m/2	10%
Cornus stolonifera 'Flavireama'	5l	5/m2	100%
Deschampsia cespitosa	3-4l	6/m2	5%
Euphorbia aygdaoides var. Robbiae	3l	5/m2	5%
Rudbeckia fulgida	1.5-2l	8/m2	15%
Sedum x telephium 'Autumn Joy'	3l	6/m2	15%
Stipa tenuissima	3l	6/m2	15%
Allium 'Globemaster'	8+ (topsize) 15 m/2		
Narcissus sp.	7+ (topsize) 25/m2		
PL4 Anemone nemorosa	1.5-2l	8/m2	5%
Asplenium scolopendrium	2l	6/m2	15%
Dryopteris cristata	2l	6/m2	10%
Dryopteris filix-mas	2l	6/m2	15%
Euphorbia aygdaoides var. Robbiae	3l	5/m2	5%
Geranium 'Plaeum'	1.5-2l	6/m2	10%
Luzula sylvatica 'Marginata'	2l	6/m2	10%
Polystichum aculeatum	2l	6/m2	10%
Vinca minor 'Alba'	1.5-2l	8/m2	20%
Galanthus nivalis	6+ (topsize) 35/m2		

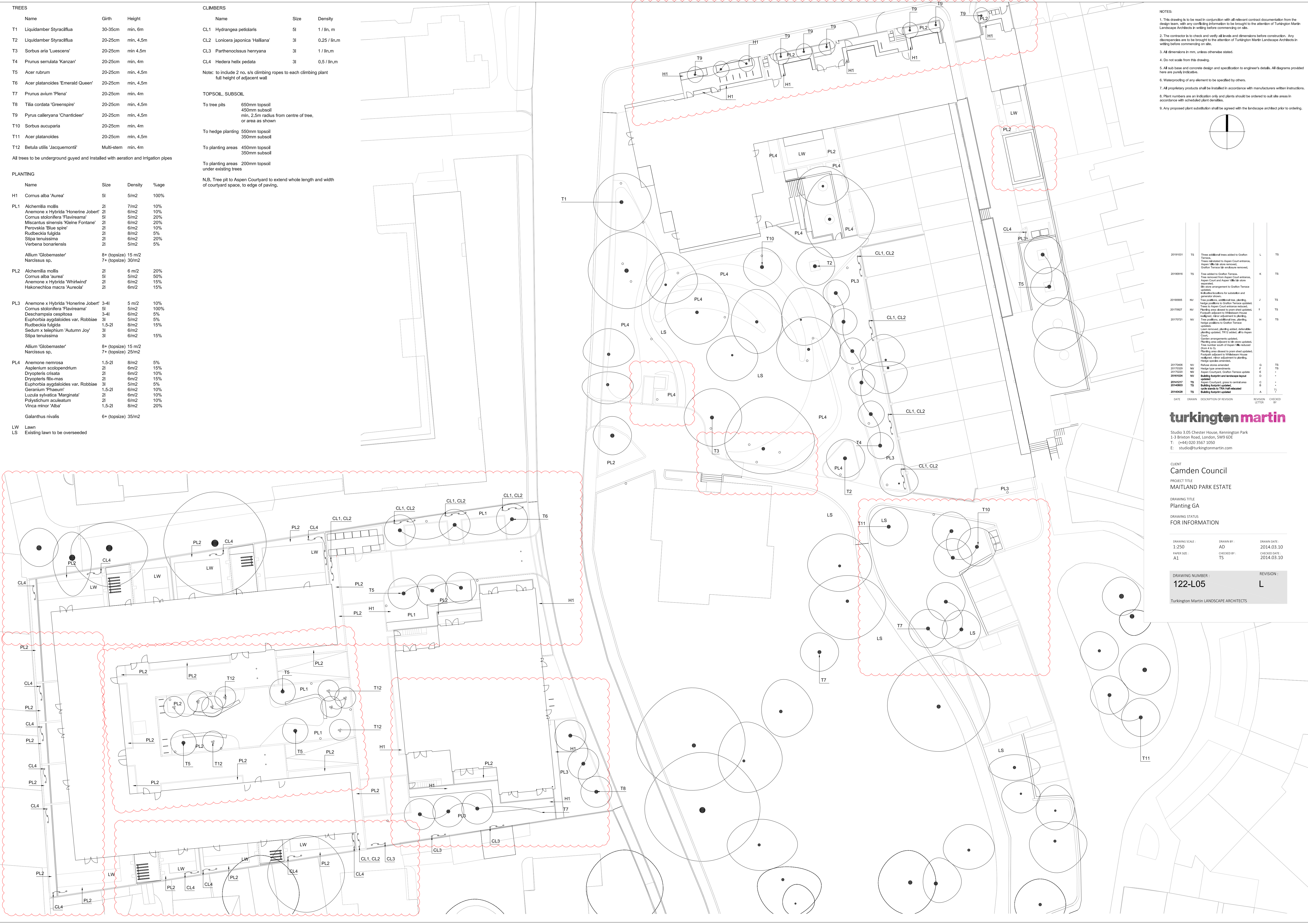
LW Lawn
LS Existing lawn to be overseeded

CLIMBERS			
Name	Size	Density	
CL1 Hydrangea petiolaris	5l	1 / lin. m	
CL2 Lonicera japonica 'Halliana'	3l	0.25 / lin.m	
CL3 Parthenocissus henryana	3l	1 / lin.m	
CL4 Hedera helix pedata	3l	0.5 / lin.m	

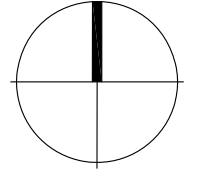
Note: to include 2 no. of climbing ropes to each climbing plant full height of adjacent wall

TOPSOIL, SUBSOIL			
To tree pits	650mm topsoil	450mm subsoil	min. 2.5m radius from centre of tree, or area as shown
To hedge planting	550mm topsoil	350mm subsoil	
To planting areas	450mm topsoil	350mm subsoil	
To planting areas	200mm topsoil		under existing trees

N.B. Tree pit to Aspen Courtyard to extend whole length and width of courtyard space, to edge of paving.



- NOTES:
- This drawing is to be read in conjunction with all relevant contract documentation from the design team, with any conflicting information to be brought to the attention of Turkington Martin Landscape Architects in writing before commencing on site.
 - The contractor is to check and verify all levels and dimensions before construction. Any discrepancies are to be brought to the attention of Turkington Martin Landscape Architects in writing before commencing on site.
 - All dimensions in mm, unless otherwise stated.
 - Do not scale from this drawing.
 - All sub base and concrete design and specification to engineer's details. All diagrams provided here are purely indicative.
 - Waterproofing of any element to be specified by others.
 - All proprietary products shall be installed in accordance with manufacturers written instructions.
 - Plant numbers are an indication only and plants should be ordered to suit site areas in accordance with scheduled plant details.
 - Any proposed plant substitution shall be agreed with the landscape architect prior to ordering.



DATE	DRAWN	DESCRIPTION OF REVISION	REVISION LETTER	CHECKED BY
20190101	TS	Three additional trees added to Griffin Terrace. Tree pits to Aspen Courtyard entrance, Aspen Villa site stone removal, Griffin Terrace site embankment removed.	L	TS
20190916	TS	Tree added to Griffin Terrace. Tree removed from Aspen Courtyard entrance, Aspen Courtyard and Aspen Villa site stone separated. Site stone arrangement to Griffin Terrace updated. Individual locations for substitution and general plantings.	K	TS
20190905	NV	Tree positions, additional tree planting, hedge positions to Griffin Terrace updated. Trees to Aspen Courtyard entrance reduced. Planting area added to grass area updated. Footpath adjacent to Whitehouse House realigned, minor adjustment to planting.	J	TS
20190907	NV	Tree positions, additional tree planting, hedge positions to Griffin Terrace updated. Lawn removed, planting added, ornamentals planting updated, T12 added. All to Aspen Court. Garden arrangements updated.	I	TS
20190721	NV	Tree positions, additional tree planting, hedge positions to Griffin Terrace updated. Lawn removed, planting added, ornamentals planting updated, T12 added. All to Aspen Court. Garden arrangements updated. Planting area adjacent to site stone updated. Tree number south of Aspen Villa reduced (from 4 to 3). Planting area added to grass area updated. Footpath adjacent to Whitehouse House realigned, minor adjustment to planting. Hedge location amended.	H	TS
20190408	NV	Retain stone amended.	G	TS
20190328	NV	Hedge line amendments.	F	TS
20190320	NV	Aspen Courtyard, Griffin Terrace update.	E	-
20190304	NV	Building footprint and driveway layout updated.	D	-
20190217	TS	Aspen Courtyard, grass to central area updated.	C	-
20190603	TS	Building footprint updated, cycle stands to T12 realigned.	B	-
20190429	TS	Building footprint updated.	A	T2

turkington martin
 Studio 3.05 Chester House, Kennington Park
 1-3 Brixton Road, London, SW9 6DE
 T: (+44) 020 3567 1050
 E: studio@turkingtonmartin.com

CLIENT
Camden Council

PROJECT TITLE
MAITLAND PARK ESTATE

DRAWING TITLE
Planting GA

DRAWING STATUS
FOR INFORMATION

DRAWING SCALE: 1:250	DRAWN BY: AD	DRAWING DATE: 2014.03.10
PAPER SIZE: A1	CHECKED BY: TS	CHECKED DATE: 2014.03.10

DRAWING NUMBER:
122-L05

REVISION:
L

Turkington Martin LANDSCAPE ARCHITECTS