



# 1 TRITON SQUARE

PLANNING CONDITION 5D  
COMMERCIAL TERRACES

JANUARY 2020





# 5D COMMERCIAL TERRACES

NO WORKS SHALL TAKE PLACE ON RELEVANT PARTS OF THE DEVELOPMENT UNTIL FULL DETAILS OF HARD AND SOFT LANDSCAPE AND MEANS OF ENCLOSURE OF ALL UN-BUILT, OPEN AREAS WITHIN THAT ELEMENT HAVE BEEN SUBMITTED TO AND APPROVED BY THE LOCAL PLANNING AUTHORITY IN WRITING. SUCH DETAILS SHALL INCLUDE PLANTING FOR BIODIVERSITY AND HABITAT FEATURES, AS OUTLINED IN THE SUSTAINABILITY ASSESSMENT HEREBY APPROVED AND SHALL INCLUDE:

COMMERCIAL ELEMENT  
D) COMMERCIAL TERRACES

[NB. PARTS E) AND F) (RESIDENTIAL ELEMENT) INTENTIONALLY OMITTED FROM SCHEDULE.]

THE RELEVANT PART OF THE WORKS SHALL NOT BE CARRIED OUT OTHERWISE THAN IN ACCORDANCE WITH THE DETAILS THUS APPROVED.

REASON: TO ENSURE THAT THE DEVELOPMENT ACHIEVES A HIGH QUALITY OF LANDSCAPING WHICH CONTRIBUTES TO THE VISUAL AMENITY AND CHARACTER OF THE AREA IN ACCORDANCE WITH THE REQUIREMENTS OF POLICIES A2, A3 AND D1 OF THE LONDON BOROUGH OF CAMDEN LOCAL PLAN 2017.

### 1.0 PLAN TO SHOW LOCATION AND EXTENT OF DECKING TO THE LEVEL SIX TERRACES

Plan showing the extent of the Hawwoods Trekker Vulcan Grooved Composite Decking 22x143mm to the level 6 terraces.

— — — — — Extent of Decking

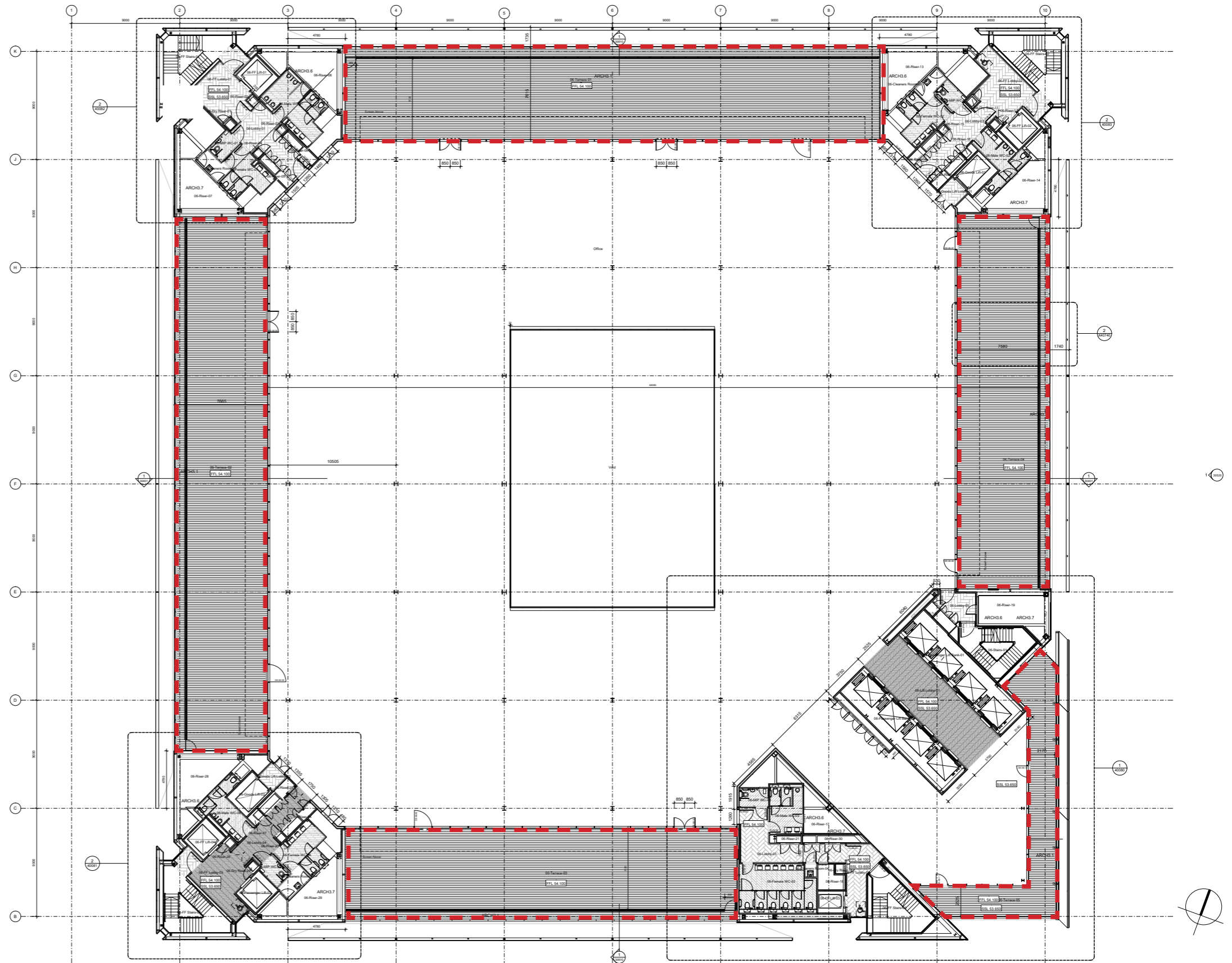


Figure No.5. 1: Level 6 GA Plan

### 1.1 PLAN TO SHOW LOCATION AND EXTENT OF DECKING TO LEVEL 2-5 BALCONIES

Plan showing the extent of the Hawwoods Trekker Vulcan Grooved Composite Decking 22x143mm to the level 2-5 balconies.

— — — — — Extent of Decking

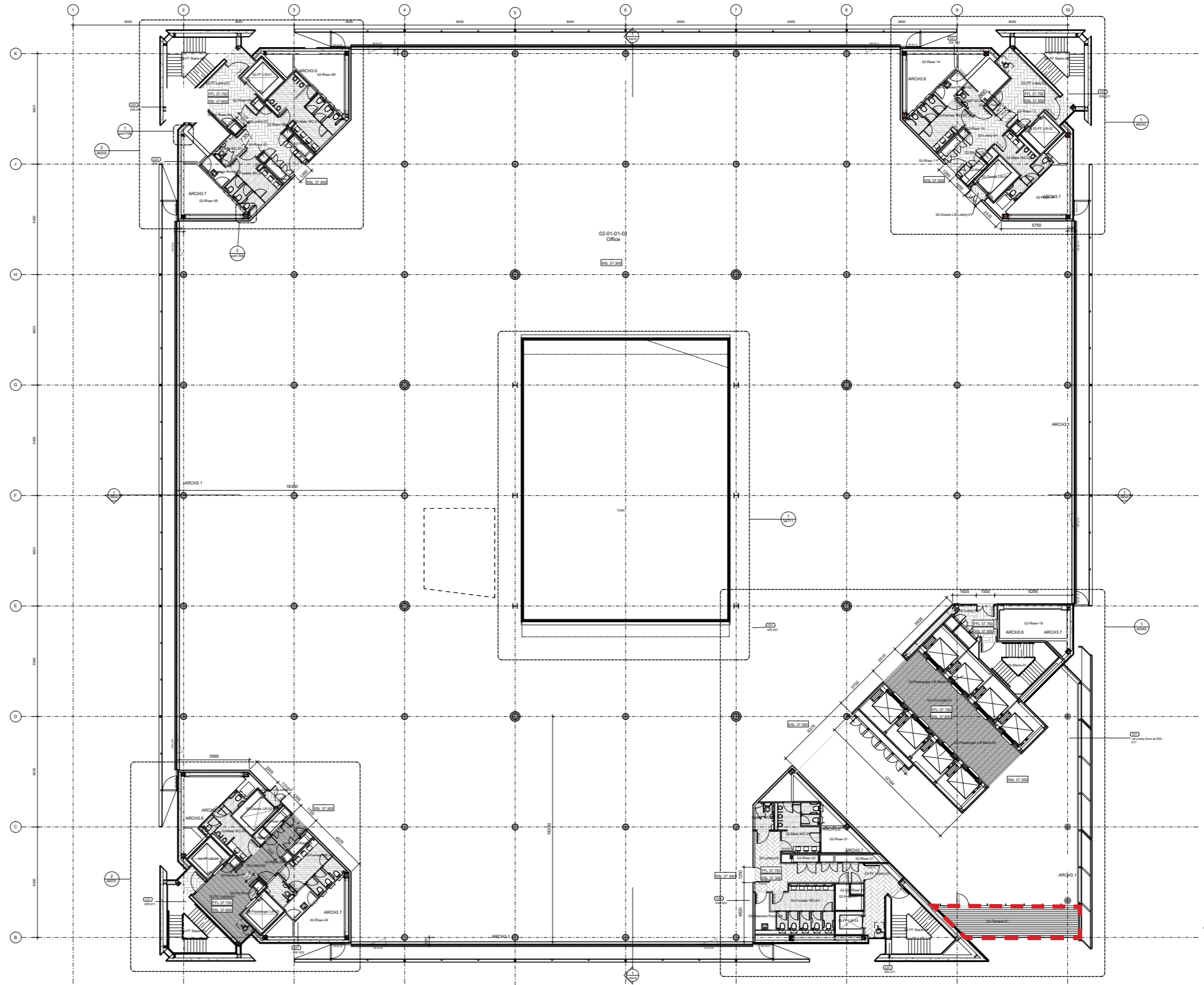


Figure No.5. 2: Level 2-5 GA Plan



1.1 DECKING PRODUCT -  
HAVWOODS TREKKER.

Decking to be used on the terraces and balconies is to be Havwoods  
Trekker Vulcan Grooved Composite Decking, 22x143mm.

