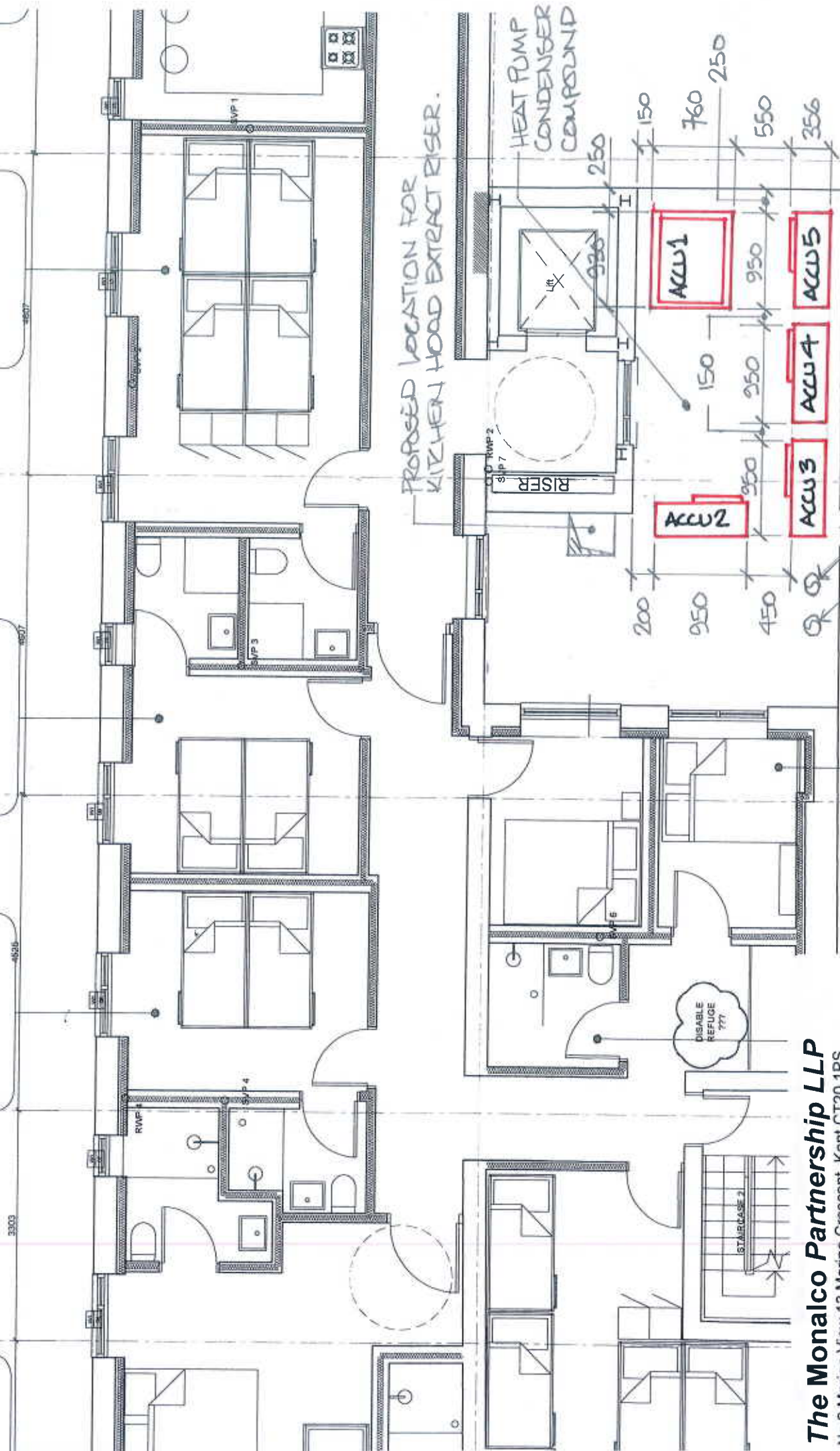


3303
E BED 1

3303
BUNK BEDS 4

4526
BUNK BEDS 4

4527
BUNK BEDS 8



PROPOSED LOCATION FOR
KITCHEN HOOD EXTRACT RISER.

HEAT PUMP
CONDENSER
COMPOUND

ACCU 1

ACCU 2

ACCU 4

ACCU 3

ACCU 5

FLUES FOR GAS FIRED
HOT WATER HEATERS
IN PLANTROOM BELOW.

LOCK HOTEL CAMDEN
1ST FLOOR ROOF PLANT

MICRO ROOM

MICRO ROOM

The Monalco Partnership LLP

No.2 Marina View, 13 Marine Crescent, Kent CT20 1PS
T 01303 248662 F 01303 248457 email: tmp@monal.co.uk

Drawn By: **PAN** Checked By: **FB**

Date: **20.10.2019** Scale: **1:50**

Drawing No: **19/112 - SK A/C RP1**

LG UK MULTI V 5 Specification Data

ARUM080LTE5

Multi V Outdoor Unit

Type	Air Cooled Heat Pump / Heat Recovery	
Colour	Warm Grey/Dawn Grey (RAL NL503K/NL507K)	
Power Supply	Ø, V, Hz	3, 380-415, 50

Performance

Capacity	Cooling	kW ¹⁾	22.4
		kW ²⁾	16.6
Heating	kW ¹⁾	22.4	
	kW ²⁾	22.4	
Heating (Max)	kW	25.2	
	Cooling	kW ¹⁾	4.49
kW ²⁾		2.91	
Heating	kW ¹⁾	3.97	
	kW ²⁾	4.85	
Heating (Max)	kW	4.78	

Efficiency

EER	Rated ¹⁾	4.99
	UK ²⁾	3.70
ESEER	Rated	8.41
	UK Complete System	10.28
ESEER (SLC)	Rated	9.46
	Rated ¹⁾	5.64
COP	UK ²⁾	4.62
	Max (at max capacity above)	5.27

Design Data

Pipe Connections For Heat Recovery	Liquid	mm(inch)	9.52(3/8)
	Low Pressure Gas	mm(inch)	19.05(3/4)
	High Pressure Gas	mm(inch)	15.88(5/8)
Pipe Connections For Heat Pump	Liquid	mm(inch)	9.52(3/8)
	Gas	mm(inch)	19.05(3/4)
Dimensions (W x H x D)		mm	930 x 1,690 x 760
Net Weight		kg	198 x 1
Sound Pressure Level	Cooling	dB(A)	58.0
	Heating	dB(A)	59.0
Sound Power Level	Cooling	dB(A)	77.0
	Heating	dB(A)	78.0
Communication Cable (VCTF-SB)		No. x mm ²	2C x 1.0 ~ 1.5
Refrigerant Name			R410A
Precharged Amount		kg	7.5
TCO _{2eq}			2087.5
GWP			15.7
Maximum Starting Current		(A)	4.3
Maximum Running Current		(A)	18.2
Maximum Fuse Amperes		(A)	20
Number of Maximum Connectable Indoor Units			13(20)

The numbers in parentheses mean maximum connectable indoor units in relation to outdoor unit combination. (refer to PDB for more information)

NOTES:

This product contains Fluorinated Greenhouse Gases R410A
Nominal performance tested under EN14511

1) Rated

Cooling - Indoor temp. 27°C DB / 19°C WB, Outdoor temp. 35°C DB / 24°C WB
Heating - Indoor temp. 20°C DB / 15°C WB, Outdoor temp. 7°C DB / 6°C WB
Interconnecting piping length 7.5m, Level Difference of zero

2) UK

Cooling - Indoor temp. 21°C DB / 15°C WB, Outdoor temp. 27°C DB / 19°C WB
Heating - Indoor temp. 20°C DB / 15°C WB, Outdoor temp. 0°C DB / 0.7°C WB
Interconnecting piping length 7.5m, Level Difference of zero

Seasonal Efficiencies

Rated - calculated on EN14511-3 methodology to give consistent season efficiency figures throughout product range
UK Complete System - calculated based on EN14511-3 methodology outdoor ambient temperatures along with UK indoor temperature of 21°C with all indoor units operational to indicate a complete system efficiency; indoor unit power consumption included.

SLC (Smart Load Control) - Automatic regulation of evaporative temperatures based on temperature and humidity direct monitoring

MULTI V 5



Accu 1
1-NO



1) participate in the EEP programme for EUROVENT AC products.
Check ongoing validity of accreditation www.eurovent-certification.com

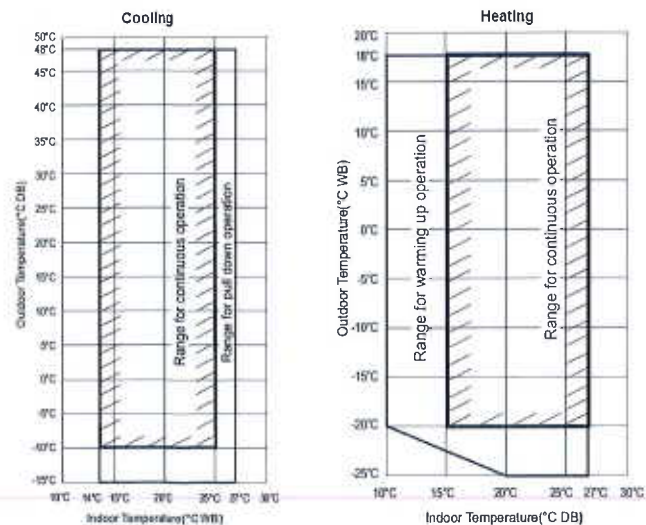
Features

Compressor	High Sided Shell	✓
	High Pressure Oil Return	✓
	Real Time Oil Monitoring	✓
	Vapour Injection	✓
	Enhanced Engineering PEEK Bearing Material	✓
	Over Compression Protection	✓
Control and Monitoring	Active Path Control	✓
	Refrigerant Quantity Control	✓
	Dual Sensing Control (Temperature and Humidity)	✓
	Smart Load Control	✓
Corrosion Resistance	Comfort Cooling	✓
	Ocean Black Fin	✓
Operation	Test Cooling / Heating	✓
	Automatic Refrigerant Charging	✓
	Automatic Refrigerant Quantity Judging	✓
	Automatic Fault Diagnosis	✓
	Partial Defrost	✓
Connectivity	No Loss in Heating Capacity Above -7°C	✓
	LG MV / LG MV Mobile	✓

Connectable Indoor Unit Ranges

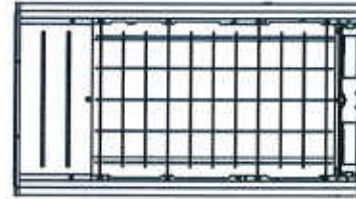
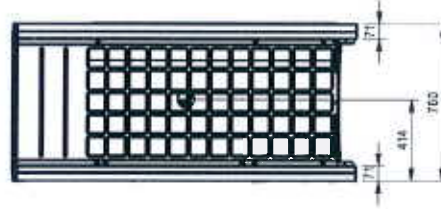
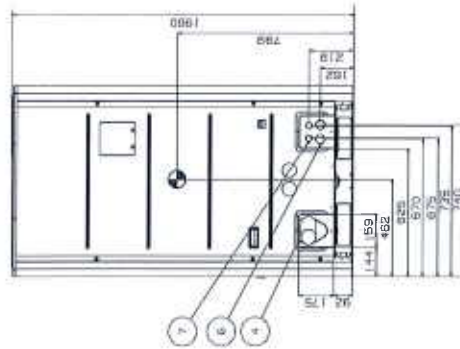
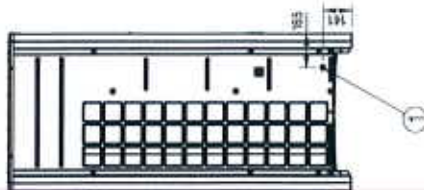
IDU Fan Coil Range	Hydro Kit
AHU Communication Kits	ERV DX

Operating Range



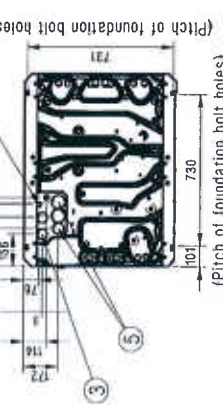
[Unit: mm]

● Gravity point



[mm.(inch)]

System	Heat Recovery		Heat Pump	
	Liquid pipe	Gas pipe	Liquid pipe	Gas pipe
8	Ø 9.52 (3/8)	Ø 19.05 (3/4)	Ø 9.52 (3/8)	Ø 19.05 (3/4)
10	Ø 9.52 (3/8)	Ø 22.2 (7/8)	Ø 9.52 (3/8)	Ø 22.2 (7/8)
12	Ø 12.7 (1/2)	Ø 28.58 (1-1/8)	Ø 12.7 (1/2)	Ø 28.58 (1-1/8)



- Note
1. Unit should be installed in compliance with the installation manual in the product box.
 2. Unit should be grounded in accordance with the local regulations or applicable national codes.
 3. All electrical components and materials to be supplied from the site must comply with the local regulations or international codes.
 4. Electrical characteristics chapter should be considered for electrical work and design. Especially the power cable and circuit breaker should be selected in accordance with that.

No.	Part Name	Description
7	Wire routing hole(front)	2- Ø 30
6	Power cord routing hole(front)	2- Ø 45
5	Pipe routing hole(bottom)	2- Ø 66, Ø 53.88
4	Pipe routing hole(front)	-
3	Power cord routing hole(bottom)	2- Ø 50
2	Wire routing hole(bottom)	2- Ø 22.2
1	Leakage test hole(side)	Ø 22.2

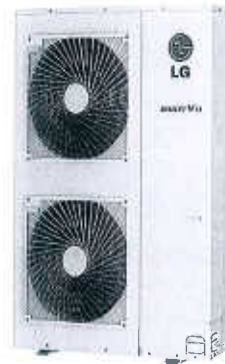
LG UK MULTI V S HR Specification Data

MULTI V S
Heat Recovery

ARUB060GSS4

Multi V Outdoor Unit

Type	Air Cooled Heat Recovery	
Colour	Warm Grey (RAL NL503K)	
Power Supply	Ø, V, Hz	1, 220-240, 50



ACCU 2-5
4-Nº



LG participates in the EUF program for EUROVENT AC products. Check copyright validity of certification. www.eurovent-certification.com

Performance

Capacity	Cooling	kW ¹⁾	15.5
		Heating	kW ²⁾
Cooling	kW ¹⁾		18.0
	Heating	kW ²⁾	18.0
Input		Cooling	kW ¹⁾
	kW ²⁾		2.00
	Heating	kW ¹⁾	4.10
		kW ²⁾	5.01

Efficiency

EER	Rated ¹⁾	3.90
	UK ²⁾	5.75
ESEER	Rated	7.17
	UK Complete System	7.64
ESEER (SLC)	Rated	7.97
	Rated ¹⁾	4.39
COP	Rated ¹⁾	4.39
	UK ²⁾	3.59

Design Data

Pipe Connections For Heat Recovery	Liquid	mm(inch)	9.52(3/8)
	Low Pressure Gas	mm(inch)	19.05(3/4)
	High Pressure Gas	mm(inch)	15.88(5/8)
Dimensions (W x H x D)	mm	950 x 1,380 x 330	
Net Weight	kg	118	
Sound Pressure Level	Cooling	dB(A)	56
	Heating	dB(A)	58
Sound Power Level	Cooling	dB(A)	69
	Heating	dB(A)	71
Max External Static Pressure	Pa	50	
Communication Cable (VCTF-SB)	No.xmm ²	2C x 1.0 ~ 1.5	
	Refrigerant Name	R410A	
	Precharged Amount	kg	3.5
	GWP	2087.5	
	TCO2eq	7.3	
Maximum Starting Current	(A)	4	
Maximum Running Current	(A)	36.0	
Maximum Fuse Amperes	(A)	40	
Power Factor (Rated)		0.93	
Number of Maximum Connectable Indoor Units		13	
Maximum Connection Index		160%	

NOTES:

This product contains Fluorinated Greenhouse Gases R410A
Nominal performance tested under EN14511

1) Rated

Cooling - Indoor temp. 27°C DB / 19°C WB, Outdoor temp. 35°C DB / 24°C WB
Heating - Indoor temp. 20°C DB / 15°C WB, Outdoor temp. 7°C DB / 6°C WB
Interconnecting piping length 7.5m, Level Difference of zero

2) UK

Cooling - Indoor temp. 21°C DB / 15°C WB, Outdoor temp. 27°C DB / 19°C WB
Heating - Indoor temp. 20°C DB / 15°C WB, Outdoor temp. 0°C DB / 0.7°C WB
Interconnecting piping length 7.5m, Level Difference of zero

Seasonal Efficiencies

Rated - calculated on EN14511-3 methodology to give consistent season efficiency figures throughout product range
UK Complete System - calculated based on EN14511-3 methodology outdoor ambient temperatures along with UK indoor temperature of 21°C with all indoor units operational to indicate a complete system efficiency indoor unit power consumption included.

SLC (Smart Load Control) - Automatic regulation of evaporative temperatures based on temperature and humidity direct monitoring

Features

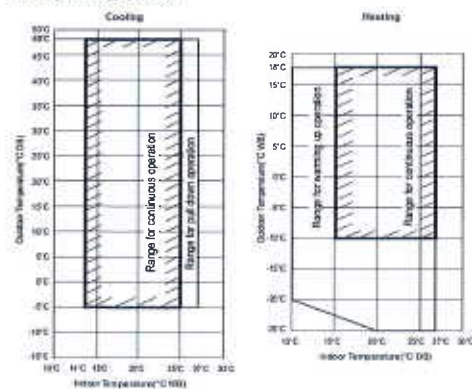
Compressor	High Sided Shell	✓
	Enhanced Engineering PEEK Bearing Material	✓
	Over Compression Protection	✓
Control and Monitoring	Dual Sensing Control (Temperature and Humidity)	✓
	Smart Load Control	✓
	Comfort Cooling	✓
	Optimal Path Heat Exchanger	✓
Corrosion Resistance	Refrigerant Cooled PCB	✓
	Gold Fin	✓
Operation	Test Cooling / Heating	✓
	Automatic Fault Diagnosis	✓
	No Loss in Heating Capacity Above -7°C	✓
Connectivity	LG MV / LG MV Mobile	✓

Connectable Indoor Unit Ranges

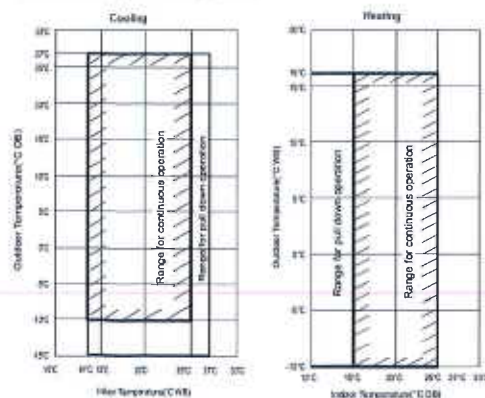
IDU Fan Coil Range	Hydro Kit
AHU Communication Kits	ERV DX

Operating Range

Cooling / Heating Operation

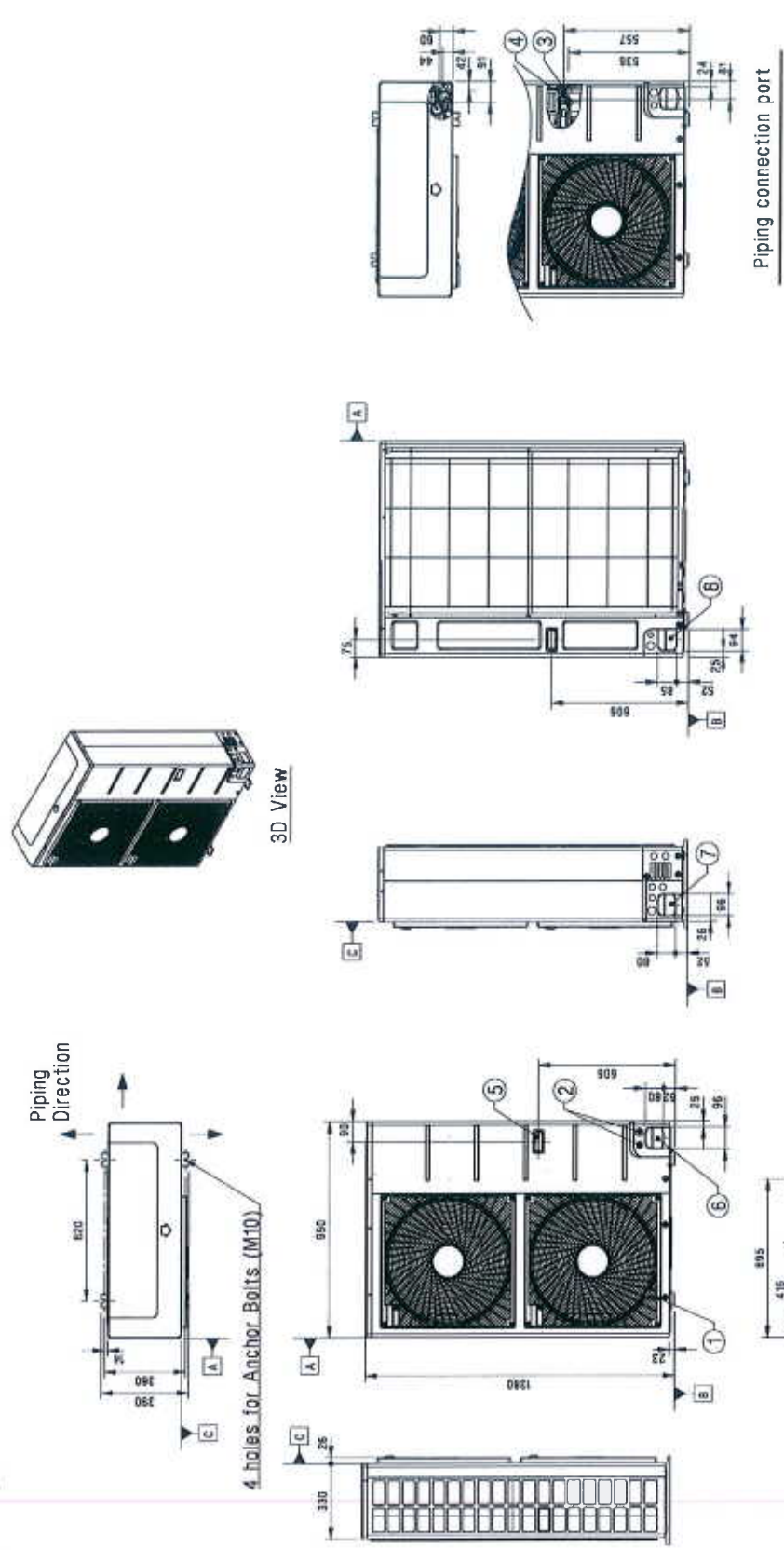


Simultaneous Cooling / Heating Operation



LG Business Solutions

[Unit: mm]



No.	Part Name	Description
1	Air Outlet	-
2	Power and communication cable Hole	-
3	Gas Pipe Connection	Welding joint
4	Liquid Pipe Connection	Welding joint
5	Handle	-
6	Pipe routing hole (front)	-
7	Pipe routing hole (side)	-
8	Pipe routing hole (back)	-

Note

- Unit should be installed in compliance with the installation manual in the product box.
- Unit should be grounded in accordance with the local regulations or applicable national codes.
- All electrical components and materials to be supplied from the site must comply with the local regulations or international codes.
- Electrical characteristics chapter should be considered for electrical work and design. Especially the power cable and circuit breaker should be selected in accordance with that.

Symbols

→ Piping Direction

▲ Datum line