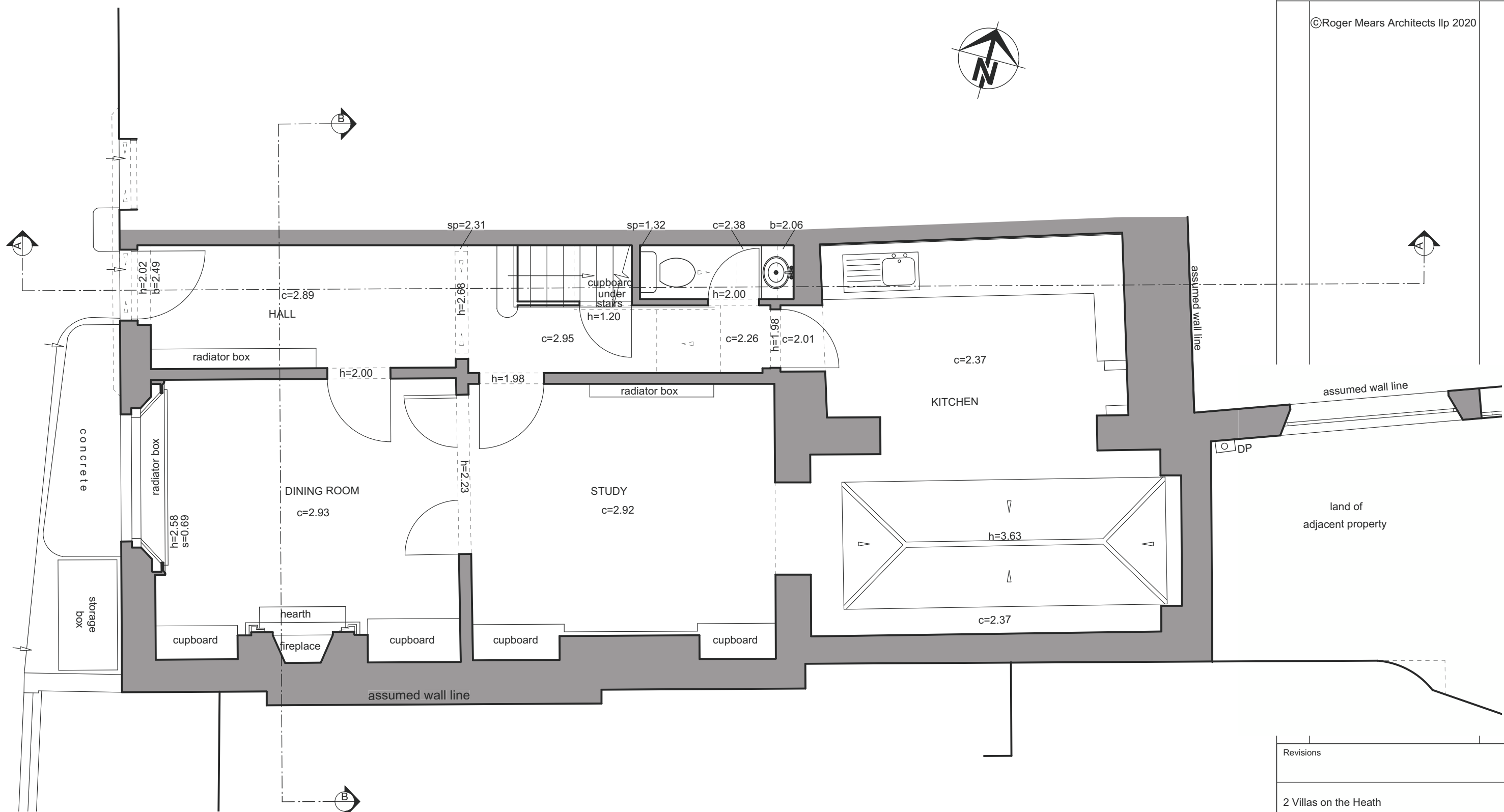


Notes DO NOT SCALE - Use Figure Dimensions Only IF IN DOUBT - ASK

©Roger Mears Architects llp 2020



Revisions

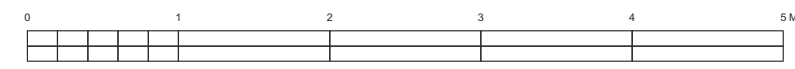
2 Villas on the Heath
Hampstead NW3 1BA

Existing Ground Floor Plan

ROGER MEARS ARCHITECTS LLP
2 Compton Terrace London N1 2UN

rma@rogermears.co.uk tel 020 7359 8222
www.rmears.co.uk fax 020 7354 5208

Date	Scale	Job No.	Code	Dwg No.
27.11.19	1:25@A1 1:50@A3	1902		01



01 Existing Ground Floor Plan
01 1:50@A3; 1:25@A1