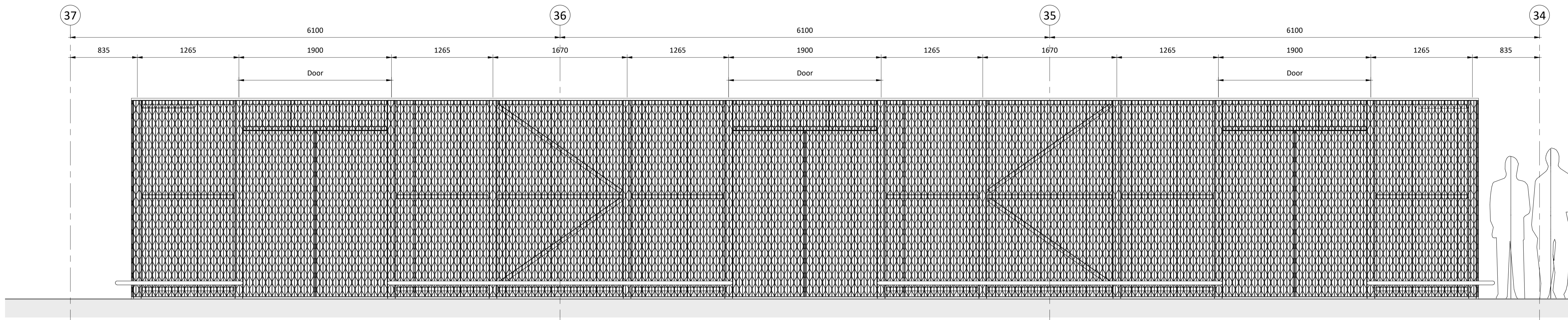


Elevation Detail 1

Scale: 1 : 25 @ A1



Elevation Detail 2

Scale: 1 : 25 @ A1

Detailing and fixing of cladding

All cladding (galvanised steel diamond pattern grating) is to be set out carefully and detailed with grating edges carefully set out to coordinate with grating pattern and the primary frame. Grating to be 25mm thick diamond pattern grating by Steelway or equal approved. Minor set out adjustments are to be made to the primary frame if appropriate / as necessary to suit the grating pattern. Grating to be fixed to 100x50x10 PFC members with recessed anti-tamper fixings. Fixings are to be set out regularly and evenly in a balanced fashion across the structure. All grating panel details and fixing positions are to be designed and set out in conjunction with final design of the primary steel frame prior to approval and fabrication.



Access doors

All access doors to be paired 900mm wide doors (1800mm total width) fabricated from 50x50 SHS framing (hot dip galvanised) with hot dip galvanised steel diamond pattern grating as cladding. Hinges: 3 No. heavy duty fabricated (made up) hinges (as detailed) per leaf. Gate bolts to secondary leaf: Hot dip galvanised steel shut bolts top and bottom to secondary leaf with provision to door head rail and steel sleeve to platform. Door latch and lock: to be provided and detailed to suit specification to be agreed with Network Rail. Doors to open 90° onto platform: Galvanised steel door stays to be fitted to all leaves (to hold doors open and safe at 90°).

Bump rails

Bump rails are to be provided at low level around the full perimeter of the enclosure: 50mm diameter tubular stainless steel bump rail system to match that in use at the station generally, centre of tube set 200mm above platform level and offset 200mm from face of cladding; support sizing, baseplate details and setting out / spacing to be determined to ensure structural adequacy and set out regularly and evenly in a balanced fashion around the structure.

Date	Rev	Description	By	Chkd
29.06.18	P01	F001 Issue	ARH	JP



STUDIO ONE

Client
Network Rail

Contractor
Colt Construction

Project
Kings Cross Station
Platform 1
New Cleaners Compound

Title
Proposed Architectural Elevations

Status
FOR APPROVAL

Studio One Project Number	Revision	Scale @ A1
016-96	P01	1:25
Drawing Number		
016-96-SO-XX-ZZ-DR-S-0007		