

View from the north



Existing view

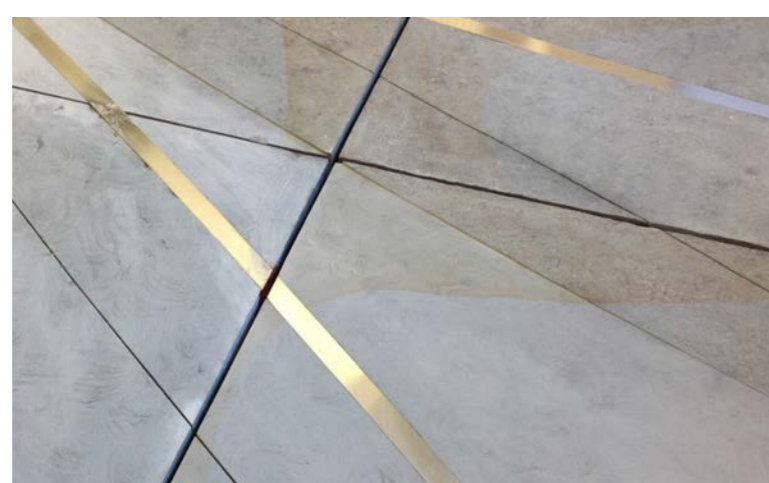


Proposed view

Proposed Materials



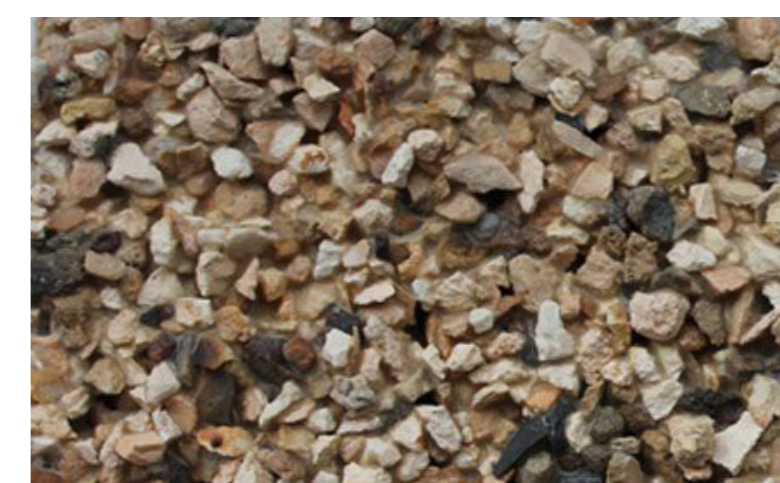
Granite paving to all areas, subtle blend to complement surrounding architecture



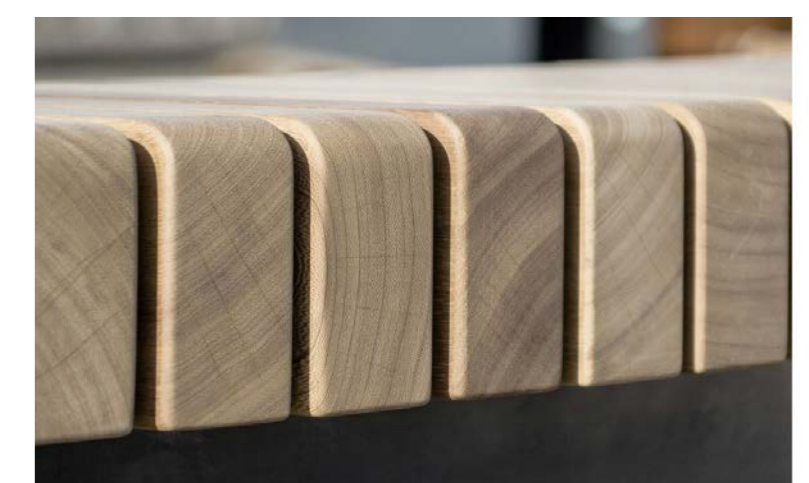
Bronze effect edging to denote distinctive triangular pattern



Bronze effect steel to all metalwork such as armrests, bicycle stands, lighting columns and litter bins.



Resin bonded surface dressing to denote different character to the 'Woodland Glade'



Timber to seating edges and decked platform (with arm rests and anti-skate protection)

View from the south



Existing view



Proposed view

Indicative Planting Palette

Planting objectives:

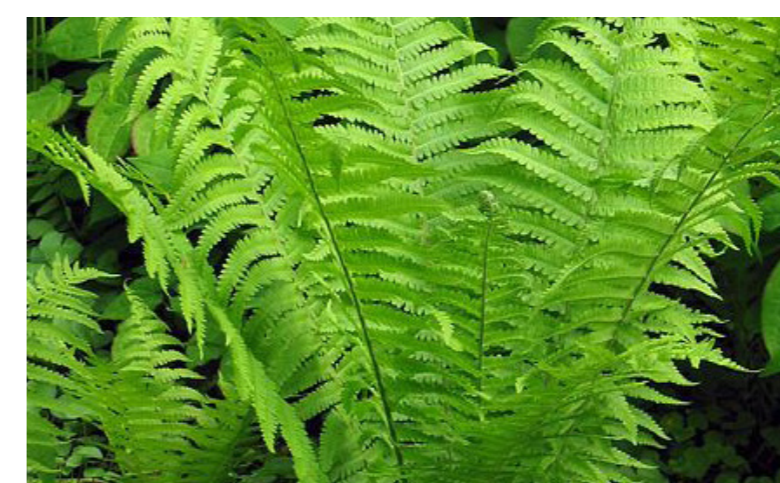
- To provide an oasis of green for people and wildlife.
- To reinforce a powerful woodland character.
- To provide a sustainable drainage function.
- Be shade tolerant and use whites and light colours to enhance character.



Asplenium scolopendrium



Astrantia 'Shaggy'



Matteuccia struthiopteris



Galium odoratum

View South West: Through the 'Woodland Glade'



Existing view



Proposed evening view



Proposed view



Allium ampeloprasum white cloud



Epimedium x yougianum 'Niveum'



Blechnum spicant



Tiarella cordifolia



Asplenium trichomanes