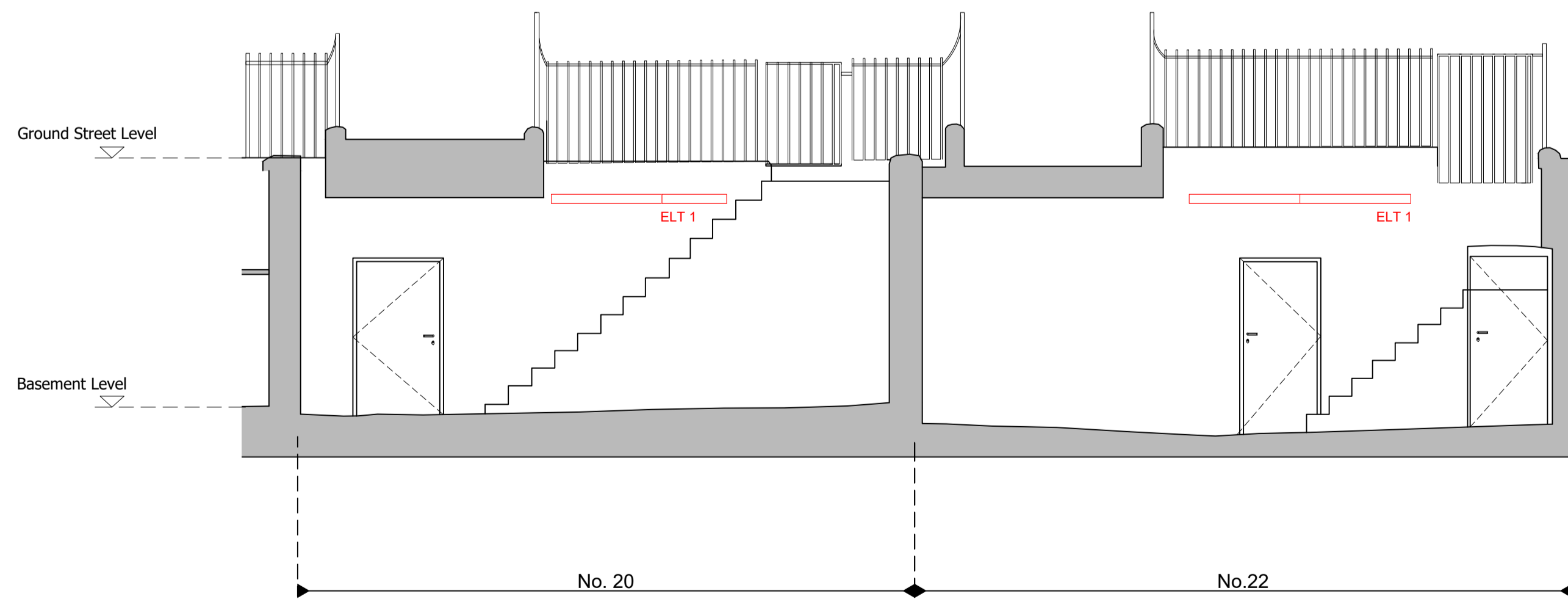
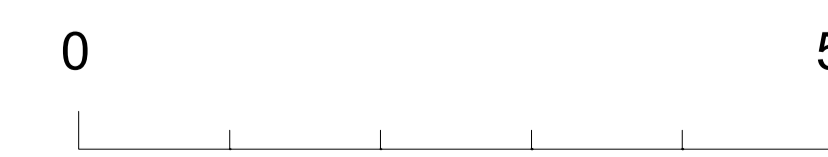


01 Proposed Sections - Lightwell Lighting for No.12-18



02 Proposed Sections - Lightwell Lighting for No.20-22



Notes

- Do not scale from this drawing.
- Dimensions are in millimeters unless stated otherwise.
- Levels are in metres above AOD unless stated otherwise.
- All drawings to be read in conjunction with relevant specifications, all relevant engineers and specialists' drawings and specifications + any other documents as specified by Thirdway Architecture.
- Report any discrepancies in writing to Thirdway Architecture.
- All dimensions are subject to site survey and are to be verified on site by the contractor before proceeding.

© Thirdway Architecture Ltd

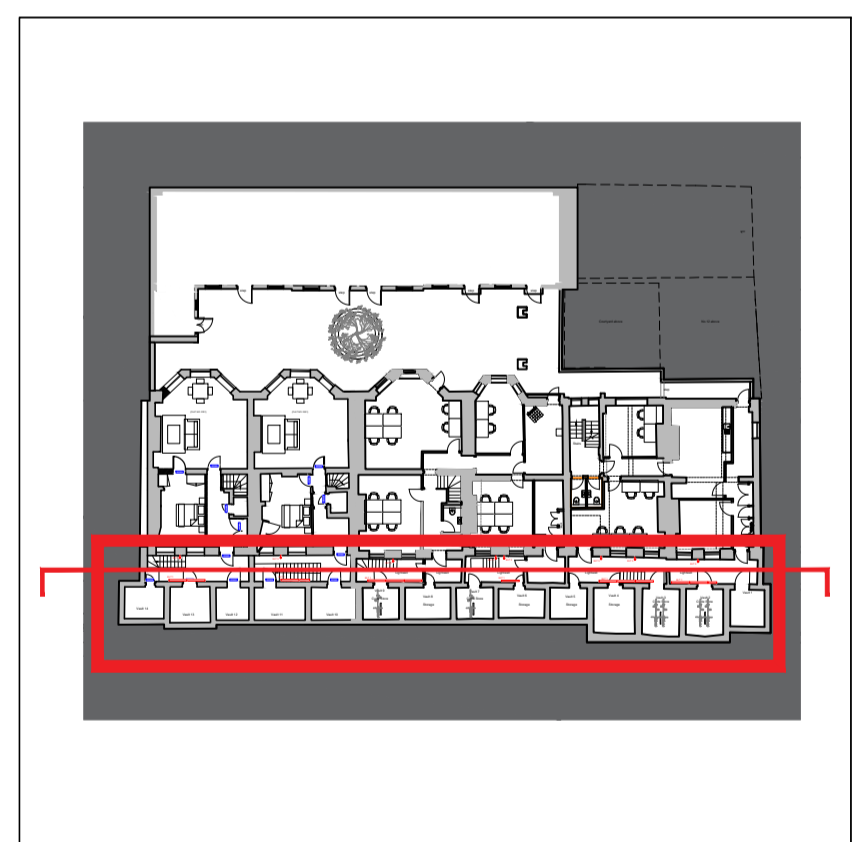
Key

1. Linear lighting (ELT-01) within lightwell, to uplight facade to provide gentle glow. (Guzzine Linealuce Mini 47 or sim approved)
2. Wall mounted traditional light (ELT-02), Belgrave Carriage Light or sim approved
3. Wall mounted light within lightwell (ELT03), Astina slim up and down light or sim approved

Refer to Design Statement for lighting specifications

Rev.	Date	Description
-	11/02/20	FOR PLANNING

Key



Project
12-22 Theobalds Road
 Client
Fernglen Properties Ltd.
 Drawing Title
Proposed Lightwell Sections - Lighting
 Scale @ A1
1:50
 Scale @ A3
1:100



Morelands 5-23 Old Street London EC1V9HL www.thirdwayarchitecture.com 020 7054 1145

Number
017-TWA-XX-B1-DR-AX-45102
 Revision
-