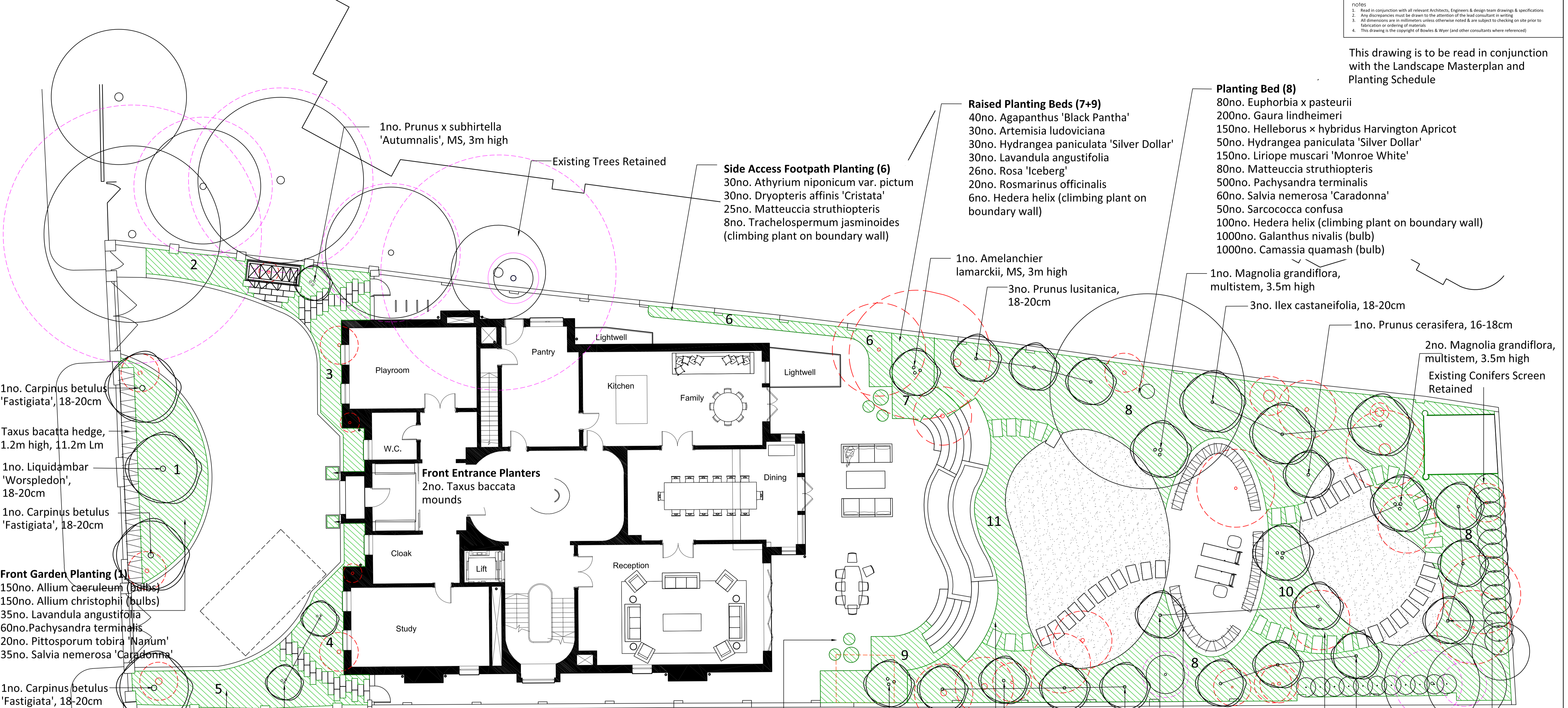


notes  
 1. Read in conjunction with all relevant Architects, Engineers & design team drawings & specifications  
 2. Any discrepancies must be drawn to the attention of the lead consultant in writing  
 3. All dimensions are in millimeters unless otherwise noted & are subject to checking on site prior to fabrication or ordering of materials  
 4. This drawing is the copyright of Bowles & Wyer (and other consultants where referenced)

This drawing is to be read in conjunction with the Landscape Masterplan and Planting Schedule



1no. Prunus x subhirtella 'Autumnalis', MS, 3m high

Existing Trees Retained

**Side Access Footpath Planting (6)**  
 30no. Athyrium niponicum var. pictum  
 30no. Dryopteris affinis 'Cristata'  
 25no. Matteuccia struthiopteris  
 8no. Trachelospermum jasminoides (climbing plant on boundary wall)

**Raised Planting Beds (7+9)**  
 40no. Agapanthus 'Black Pantha'  
 30no. Artemisia ludoviciana  
 30no. Hydrangea paniculata 'Silver Dollar'  
 30no. Lavandula angustifolia  
 26no. Rosa 'Iceberg'  
 20no. Rosmarinus officinalis  
 6no. Hedera helix (climbing plant on boundary wall)

**Planting Bed (8)**  
 80no. Euphorbia x pasteurii  
 200no. Gaura lindheimeri  
 150no. Helleborus x hybridus Harvington Apricot  
 50no. Hydrangea paniculata 'Silver Dollar'  
 150no. Liriope muscari 'Monroe White'  
 80no. Matteuccia struthiopteris  
 500no. Pachysandra terminalis  
 60no. Salvia nemerosa 'Caradonna'  
 50no. Sarcococca confusa  
 100no. Hedera helix (climbing plant on boundary wall)  
 1000no. Galanthus nivalis (bulb)  
 1000no. Camassia quamash (bulb)

1no. Amelanchier lamarckii, MS, 3m high  
 3no. Prunus lusitanica, 18-20cm

1no. Magnolia grandiflora, multistem, 3.5m high  
 3no. Ilex castaneifolia, 18-20cm

1no. Prunus cerasifera, 16-18cm

2no. Magnolia grandiflora, multistem, 3.5m high  
 Existing Conifers Screen Retained

1no. Carpinus betulus 'Fastigiata', 18-20cm  
 Taxus baccata hedge, 1.2m high, 11.2m Lm  
 1no. Liquidambar 'Worspleton', 18-20cm  
 1no. Carpinus betulus 'Fastigiata', 18-20cm

**Front Garden Planting (1)**  
 150no. Allium caeruleum (bulbs)  
 150no. Allium christophii (bulbs)  
 35no. Lavandula angustifolia  
 60no. Pachysandra terminalis  
 20no. Pittosporum tobira 'Nanum'  
 35no. Salvia nemerosa 'Caradonna'

1no. Carpinus betulus 'Fastigiata', 18-20cm

**Front Entrance Planters**  
 2no. Taxus baccata mounds

1no. Amelanchier lamarckii, MS, 3m high  
 1no. Carpinus betulus, 18-20cm

Taxus baccata hedge, 0.5m high, 19.2Lm  
 2no. Prunus cerasifera, 16-18cm

3no. Carpinus Detulus, 18-20cm

3no. Ligustrum japonicum, 18-20cm

**Front Garden Planting (2,3,4,5)**  
 40no. Artemisia ludoviciana  
 300no. Camassia quamash (bulbs)  
 40no. Euphorbia x pasteurii  
 300no. Galanthus nivalis (bulbs)  
 50no. Lavandula angustifolia  
 100no. Pachysandra terminalis  
 50no. Salvia nemerosa 'Caradonna'  
 10no. Trachelospermum jasminoides (climbing plant on boundary wall)

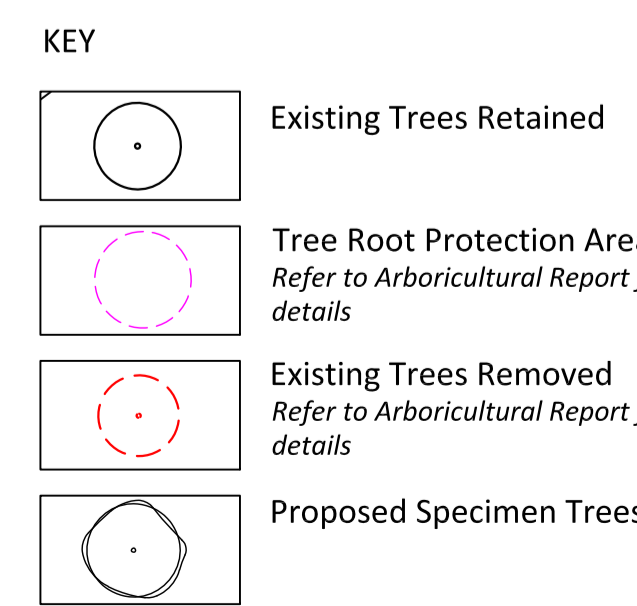
2no. Prunus x subhirtella 'Autumnalis', MS, 3m high

**Terrace Pots (seasonal plants)**  
 10no. Astrantia 'Buckland'  
 10no. Erigeron karvinskianus  
 6no. Nepeta fasennii  
 10no. Mentha spicata  
 6no. Rosmarinus officinalis

**Planting Bed (11)**  
 25no. Artemisia ludoviciana  
 40no. Lavandula angustifolia  
 30no. Hylotelephium 'Matrona'  
 30no. Rosa 'Iceberg'  
 20no. Rosmarinus officinalis  
 30no. Sanguisorba canadensis  
 6no. Taxus baccata topiary mounds

3no. Prunus lusitanica, 18-20cm

**Planting Bed (10)**  
 10no. Artemisia ludoviciana  
 15no. Gaura lindheimeri  
 15no. Lavandula angustifolia  
 50no. Pachysandra terminalis  
 15no. Pittosporum tenuifolium  
 10no. Rosmarinus officinalis  
 15no. Sanguisorba canadensis



**Planting Specification Notes:**  
 All new trees to have underground guying to provide adequate support.  
 Proposed shrub planting in 3-5L pots  
 Proposed herbaceous planting in 2-3L pots, planted to an approximate density of 6/m2.

A	11.02.20	AP	JS	Planting numbers added
Orig	30.01.20	AP	JS	n/a
rev	date	by	chk	notes

**BOWLES & WYER**  
 5 Williams Court, Tunnel Way, Pitstone, Nr. Leighton Buzzard, LU7 9GJ  
 Tel: 01296 662439 Fax: 01296 663959 Email: admin@bowleswyer.co.uk

project title  
**16 Avenue Road**

drawing  
**Indicative Planting Plan**

job number <b>2719</b>	drawing number <b>2719-16-01</b>	north 
---------------------------	-------------------------------------	-----------

status  
**PLANNING**

scale 1:100@A1