



© Architon LLP 2014

This drawing is the property of Architon LLP and must not be divulged to anyone, copied or reproduced, or used for marketing, advertising or promotional purposes without the express written permission of Architon LLP.

All dimensions are to be checked on site and not scaled from this drawing. Contractors must verify all dimensions on site before setting out, commencing work or preparing shop drawings. Any discrepancies on this drawing with other contract documentation to be reported immediately for clarification.

DRAWINGS ARE BASED ON INFORMATION PROVIDED BY UCL.

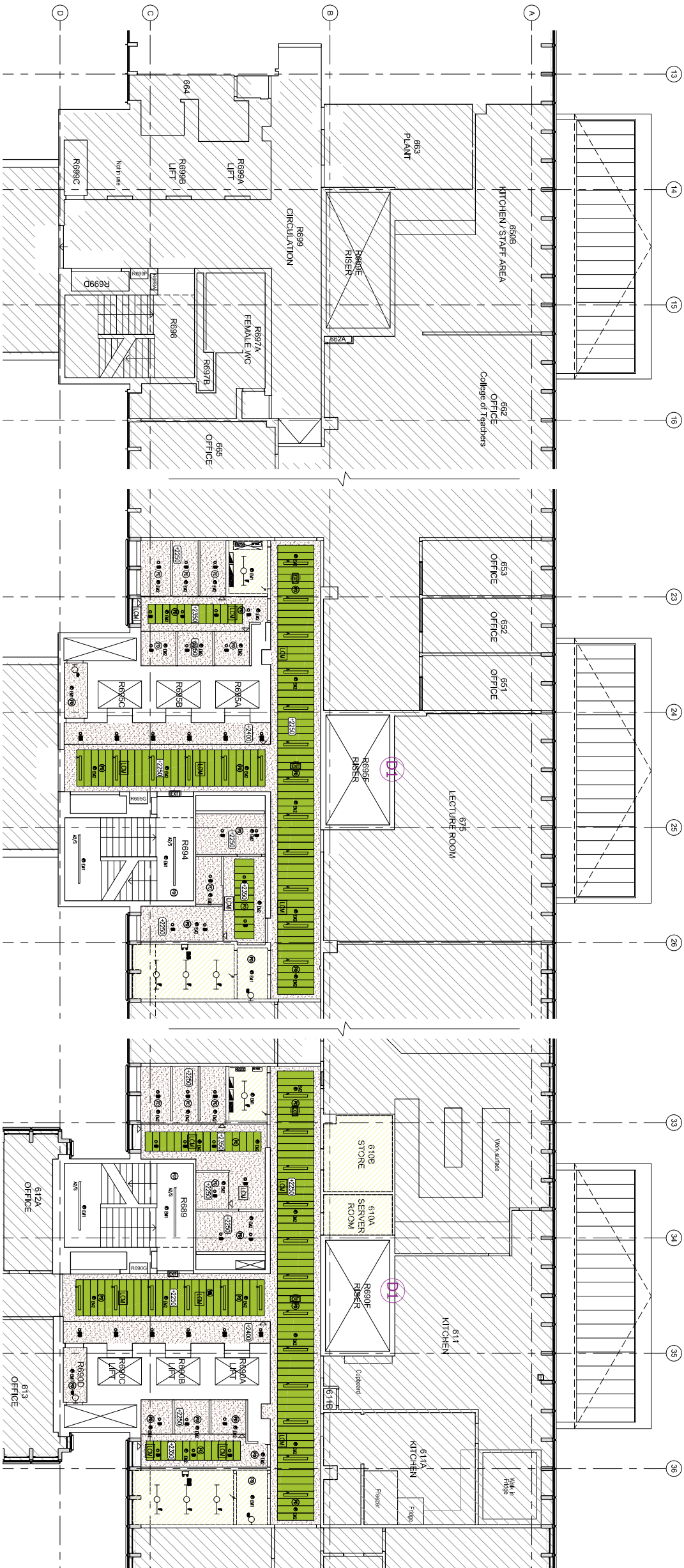
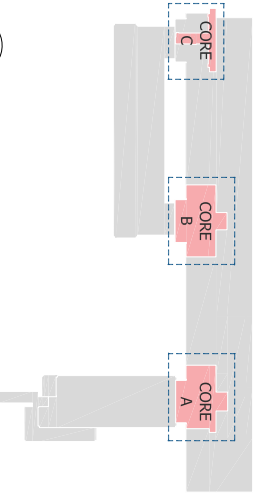
DRAWINGS TO BE READ IN CONJUNCTION WITH:

- ARCHITECTURAL SCHEDULES AND SPECIFICATIONS.
 - STRUCTURAL DRAWINGS AND SPECIFICATIONS.
 - M&E DRAWINGS AND SPECIFICATIONS.
 - ACOUSTIC REPORTS.
 - FIRE STRATEGY.
- WORKS AREAS NOT SURVEYED.

1 LEVEL 6 - KEY PLAN

FOR REFERENCE

NTS



2 LEVEL 6 - CORE C

REFLECTED CEILING FINISHES

1:100

3 LEVEL 6 - CORE B

REFLECTED CEILING FINISHES

1:100

4 LEVEL 6 - CORE A

REFLECTED CEILING FINISHES

1:100

LEGEND

AREA OUTSIDE SCOPE OF WORKS, EXCEPT FOR MAKING GOOD WHERE DISTURBED

NOTE: APPLY PAINT FINISH TO ALL EXPOSED INTERNAL SOFFITS, TO INCLUDE ABOVE ALL M&E SERVICES AND ACOUSTIC PANELS.

PAINT FINISH TO EXPOSED SOFFITS, COLOUR - 'LINEN' TO MATCH PHASE 1

PLASTERBOARD SUSPENDED CEILING SYSTEM, PAINT FINISH, COLOUR WHITE

METAL SUSPENDED CEILING - PLANKS, COLOUR WHITE PPC

ACOUSTIC RAFT WITH INTEGRATED SERVICES

LINE / FACE OF BULKHEAD / LOWERED SOFFIT

DUST SEAL TO SOFFIT ONLY

CEILING TYPE

NOTIONAL CEILING HEIGHT

NEW RISER ACCESS DOOR - LOCATION TO BE CONFIRMED TO SUIT LOCATION OF NEW AND EXISTING SERVICES

NOTE:

FOR ALL CEILING FINISH REFERENCES REFER TO FINISHES SCHEDULE 3147-SCH04 AND NBS SPECIFICATIONS.

CONTRACTOR TO CHECK LIGHT SETTING OUT ON SITE TO CONFIRM ANY FURTHER WALL CLASHES PRIOR TO CONSTRUCTION.

REFER TO M&E CONSULTANT'S DRAWINGS AND SCHEDULES FOR ALL M&E LAYOUTS, SYMBOLS & LIGHTING REFERENCES. ALL LEVELS SHOWN NOMINAL AND TO BE CHECKED AGAINST EXISTING LEVELS ON SITE.

REFER TO COORDINATED REFLECTED CEILING PLAN FOR SETTING-OUT OF ALL CEILING-LEVEL ARCHITECTURAL, MECHANICAL, ELECTRICAL AND AV ITEMS.

NOTES

1. ALL FINISHES SHALL BE READ IN CONJUNCTION WITH THE ARCHITECTURAL SCHEDULES, SPECIFICATIONS & NBS SPECIFICATIONS.

2. THE FINISHES SCHEDULES, SPECIFICATIONS & NBS SPECIFICATIONS SHALL BE USED TO DETERMINE THE FINISHES TO BE APPLIED TO THE EXISTING SERVICES SPACE SHALL BE COMBINED WITH THE FINISHES SCHEDULES, SPECIFICATIONS & NBS SPECIFICATIONS.

3. THE FINISHES SCHEDULES, SPECIFICATIONS & NBS SPECIFICATIONS SHALL BE USED TO DETERMINE THE FINISHES TO BE APPLIED TO THE EXISTING SERVICES SPACE SHALL BE COMBINED WITH THE FINISHES SCHEDULES, SPECIFICATIONS & NBS SPECIFICATIONS.

4. THE FINISHES SCHEDULES, SPECIFICATIONS & NBS SPECIFICATIONS SHALL BE USED TO DETERMINE THE FINISHES TO BE APPLIED TO THE EXISTING SERVICES SPACE SHALL BE COMBINED WITH THE FINISHES SCHEDULES, SPECIFICATIONS & NBS SPECIFICATIONS.

5. THE FINISHES SCHEDULES, SPECIFICATIONS & NBS SPECIFICATIONS SHALL BE USED TO DETERMINE THE FINISHES TO BE APPLIED TO THE EXISTING SERVICES SPACE SHALL BE COMBINED WITH THE FINISHES SCHEDULES, SPECIFICATIONS & NBS SPECIFICATIONS.

6. THE FINISHES SCHEDULES, SPECIFICATIONS & NBS SPECIFICATIONS SHALL BE USED TO DETERMINE THE FINISHES TO BE APPLIED TO THE EXISTING SERVICES SPACE SHALL BE COMBINED WITH THE FINISHES SCHEDULES, SPECIFICATIONS & NBS SPECIFICATIONS.

7. THE FINISHES SCHEDULES, SPECIFICATIONS & NBS SPECIFICATIONS SHALL BE USED TO DETERMINE THE FINISHES TO BE APPLIED TO THE EXISTING SERVICES SPACE SHALL BE COMBINED WITH THE FINISHES SCHEDULES, SPECIFICATIONS & NBS SPECIFICATIONS.

8. THE FINISHES SCHEDULES, SPECIFICATIONS & NBS SPECIFICATIONS SHALL BE USED TO DETERMINE THE FINISHES TO BE APPLIED TO THE EXISTING SERVICES SPACE SHALL BE COMBINED WITH THE FINISHES SCHEDULES, SPECIFICATIONS & NBS SPECIFICATIONS.

9. THE FINISHES SCHEDULES, SPECIFICATIONS & NBS SPECIFICATIONS SHALL BE USED TO DETERMINE THE FINISHES TO BE APPLIED TO THE EXISTING SERVICES SPACE SHALL BE COMBINED WITH THE FINISHES SCHEDULES, SPECIFICATIONS & NBS SPECIFICATIONS.

10. THE FINISHES SCHEDULES, SPECIFICATIONS & NBS SPECIFICATIONS SHALL BE USED TO DETERMINE THE FINISHES TO BE APPLIED TO THE EXISTING SERVICES SPACE SHALL BE COMBINED WITH THE FINISHES SCHEDULES, SPECIFICATIONS & NBS SPECIFICATIONS.

11. THE FINISHES SCHEDULES, SPECIFICATIONS & NBS SPECIFICATIONS SHALL BE USED TO DETERMINE THE FINISHES TO BE APPLIED TO THE EXISTING SERVICES SPACE SHALL BE COMBINED WITH THE FINISHES SCHEDULES, SPECIFICATIONS & NBS SPECIFICATIONS.

12. THE FINISHES SCHEDULES, SPECIFICATIONS & NBS SPECIFICATIONS SHALL BE USED TO DETERMINE THE FINISHES TO BE APPLIED TO THE EXISTING SERVICES SPACE SHALL BE COMBINED WITH THE FINISHES SCHEDULES, SPECIFICATIONS & NBS SPECIFICATIONS.

13. THE FINISHES SCHEDULES, SPECIFICATIONS & NBS SPECIFICATIONS SHALL BE USED TO DETERMINE THE FINISHES TO BE APPLIED TO THE EXISTING SERVICES SPACE SHALL BE COMBINED WITH THE FINISHES SCHEDULES, SPECIFICATIONS & NBS SPECIFICATIONS.

14. THE FINISHES SCHEDULES, SPECIFICATIONS & NBS SPECIFICATIONS SHALL BE USED TO DETERMINE THE FINISHES TO BE APPLIED TO THE EXISTING SERVICES SPACE SHALL BE COMBINED WITH THE FINISHES SCHEDULES, SPECIFICATIONS & NBS SPECIFICATIONS.

15. THE FINISHES SCHEDULES, SPECIFICATIONS & NBS SPECIFICATIONS SHALL BE USED TO DETERMINE THE FINISHES TO BE APPLIED TO THE EXISTING SERVICES SPACE SHALL BE COMBINED WITH THE FINISHES SCHEDULES, SPECIFICATIONS & NBS SPECIFICATIONS.

16. THE FINISHES SCHEDULES, SPECIFICATIONS & NBS SPECIFICATIONS SHALL BE USED TO DETERMINE THE FINISHES TO BE APPLIED TO THE EXISTING SERVICES SPACE SHALL BE COMBINED WITH THE FINISHES SCHEDULES, SPECIFICATIONS & NBS SPECIFICATIONS.

17. THE FINISHES SCHEDULES, SPECIFICATIONS & NBS SPECIFICATIONS SHALL BE USED TO DETERMINE THE FINISHES TO BE APPLIED TO THE EXISTING SERVICES SPACE SHALL BE COMBINED WITH THE FINISHES SCHEDULES, SPECIFICATIONS & NBS SPECIFICATIONS.

18. THE FINISHES SCHEDULES, SPECIFICATIONS & NBS SPECIFICATIONS SHALL BE USED TO DETERMINE THE FINISHES TO BE APPLIED TO THE EXISTING SERVICES SPACE SHALL BE COMBINED WITH THE FINISHES SCHEDULES, SPECIFICATIONS & NBS SPECIFICATIONS.

19. THE FINISHES SCHEDULES, SPECIFICATIONS & NBS SPECIFICATIONS SHALL BE USED TO DETERMINE THE FINISHES TO BE APPLIED TO THE EXISTING SERVICES SPACE SHALL BE COMBINED WITH THE FINISHES SCHEDULES, SPECIFICATIONS & NBS SPECIFICATIONS.



Job title
University College London
Institute of Education
Phase 2
20 Bedford Way, WC1H 0AL

Drawing title
Level 6
Reflected Ceiling Finishes

Scale	Date	Drawn
1:100 @ A1	Dec 19	CM



CHARTERED ARCHITECTS - DESIGN
BUILDING COST MANAGEMENT
REGENCY HOUSE
17 WEST STREET
EPCOM KT13 7RL Email: info@architon.com

Drawing No
3147-P1-2604 C

ARCHITON LLP
certified to:
BS EN ISO 9001
BS EN ISO 14001
IP Accreditation