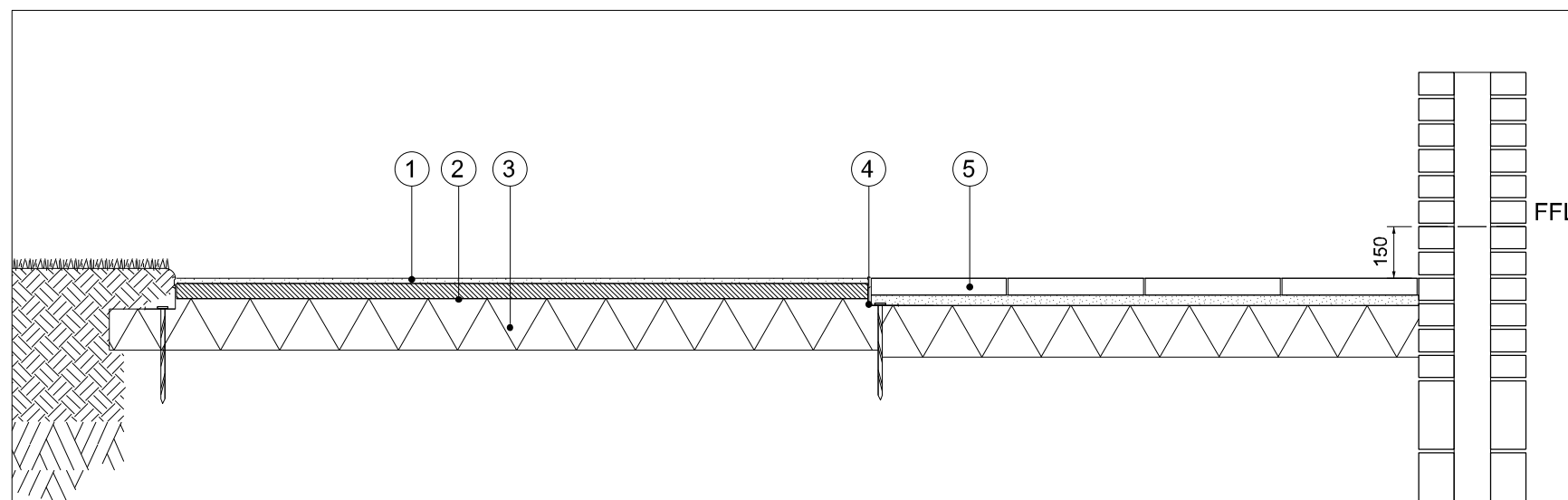


Plan 1:50 @A3

1. Safety surface wearing course, Q26.
2. Safety surface base course, Q26.
3. Granular base.
4. Flexible edge, Q10.
5. Exposed aggregate slabs, Q25.



Section AA 1:20 @ A3

amendments

drawing status: Tender

project:
Mayford Centre
Camden

job number:
LP2184

drawing title:
Safety Surface

drawing number:
LP2184-FIRA-D6-D-4006

revision	scale	date
-	1:20 @ A3	19/11/2019

for information	drawn	auth	date
for construction	VP	JP	

fira
The Jewellery Business Centre
95 Spencer Street
BIRMINGHAM B18 6DA.
Tel: 0121 523 1033
Fax: 0121 523 1034
fira landscape architecture and urban design