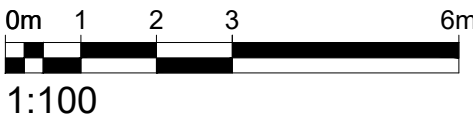


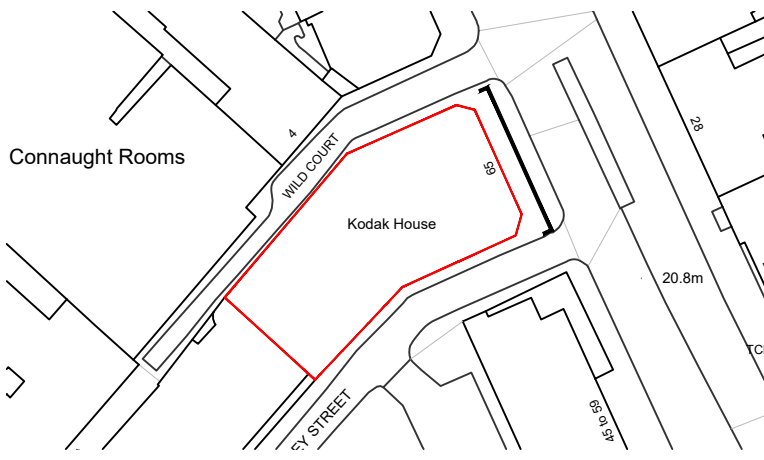
- Note:
- Existing portland stone facade cleaned and repaired
 - New double glazed crittal style metal slim line windows. Black colour. Includes all replacement windows.
 - Existing historic entrance door, gate and features restored, new bronze signage and new backlit soffit with black metal framing. Existing stone entrance floor cleaned.
 -
 -
 - New metal terrace balustrade. Bronze colour finish.
 - New 7th floor mansard storey. Standing seam zinc cladding - bronze colour.
 - New metal framed, double glazed full height windows. Black colour.
 -
 - New louvered metal plant screen. PPC Grey colour.
 -
 - New vertical core extension. Glazed bricks to match existing Wild Court facade.
 - New black metal frame windows to 6th floor 1920s facade.
 - Existing 1920's bronze facade and canopy detail restored.
 - Existing bronze spandrel panels restored throughout facade.

Not in project scope

Existing roof profile



P5	Issued for Planning	AC	04.02.20
First floor window design amended			
P4	Issued for Planning	AC	28.11.19
Rev.	Description.	By	Date



Client
Kings Keeley Limited C/o Clearbell Capital LLP

Project
65 Kingsway - Base Scheme

Title
Proposed Kingsway Elevation

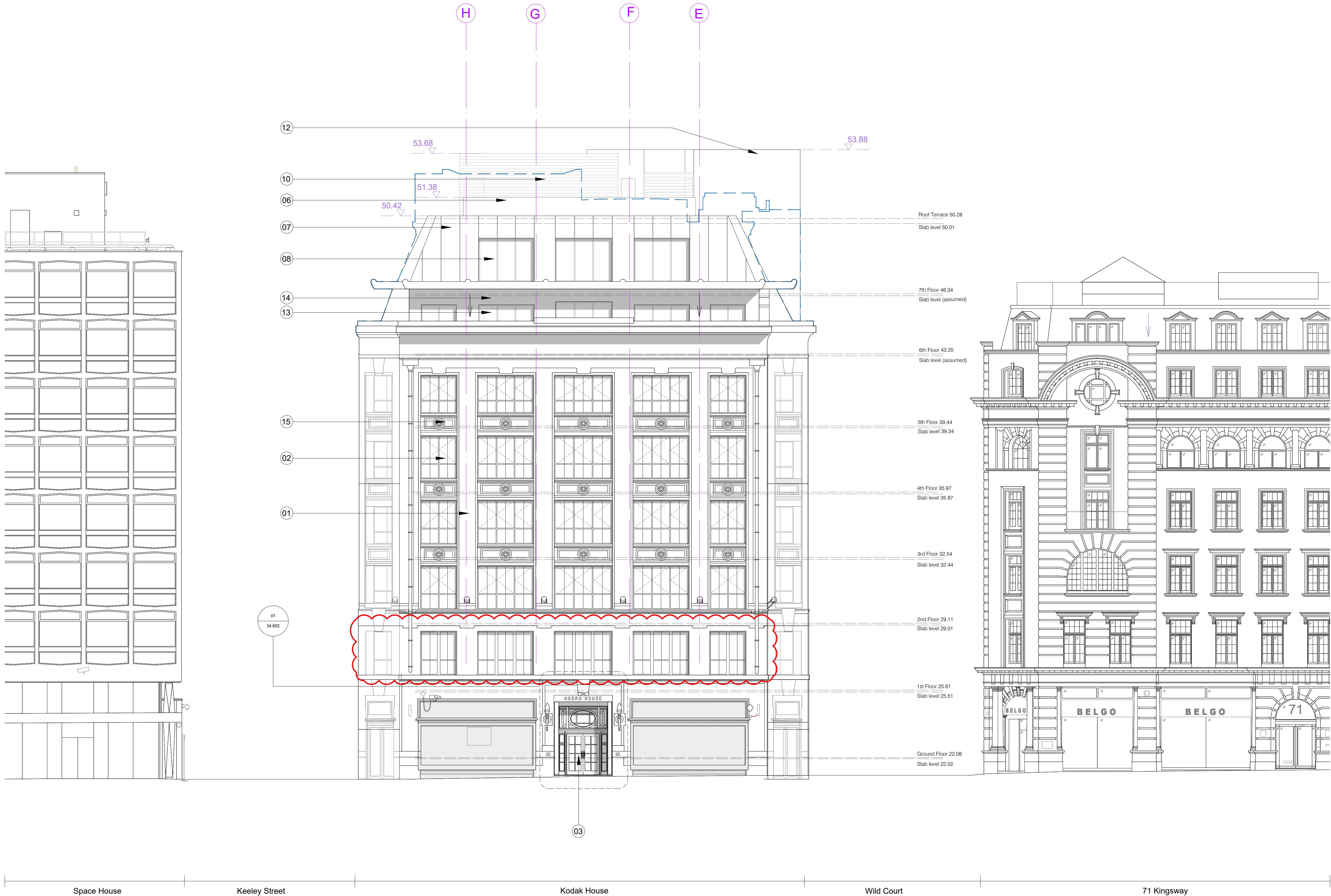
Status	Purpose of issue	RIBA stage
S2	For Planning	2

Project No.	Drawn	Checked	Scale	Rev.
1914	FB	TJ	1:100 @ A1 1:200 @ A3	P5

Drawing No.
1914-BG-01-ZZ-DR-A-20.272

Do not scale from this drawing. The Contractor is to take and check all dimensions on site before work commences. Discrepancies must be reported to the Architect. Subcontractors must verify all dimensions on site before making a shop drawing or commencing manufacturing. This drawing is copyright. ©

© Copyright Barr Gazetas Ltd.
A 10 Heddon Street, London, W1B 4BG
T 0207 636 5561
W www.barrgazetas.com



Space House

Keeley Street

Kodak House

Wild Court

71 Kingsway

01
20.202

Proposed Kingsway Elevation
1:100@A1, 1:200@A3