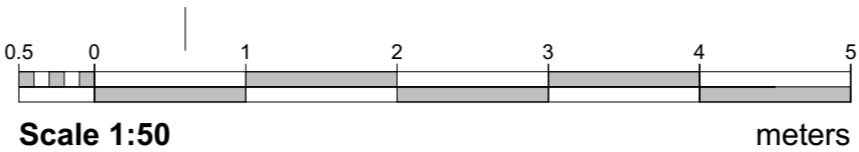
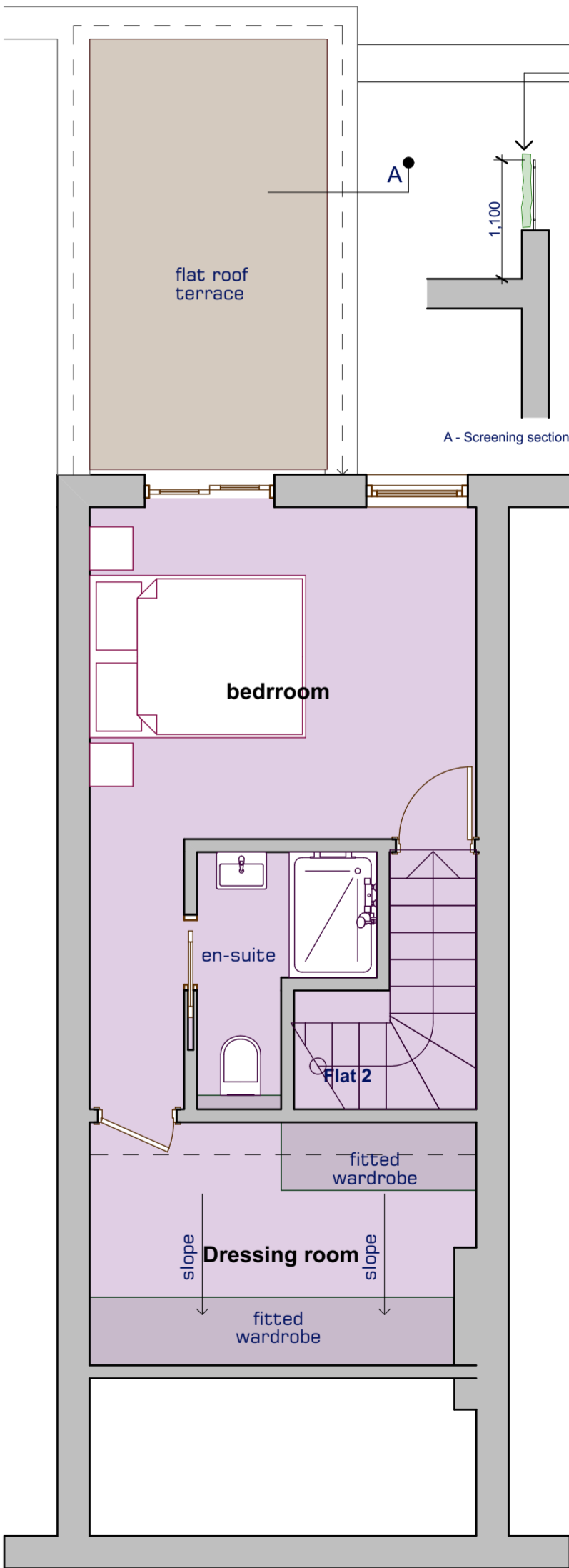
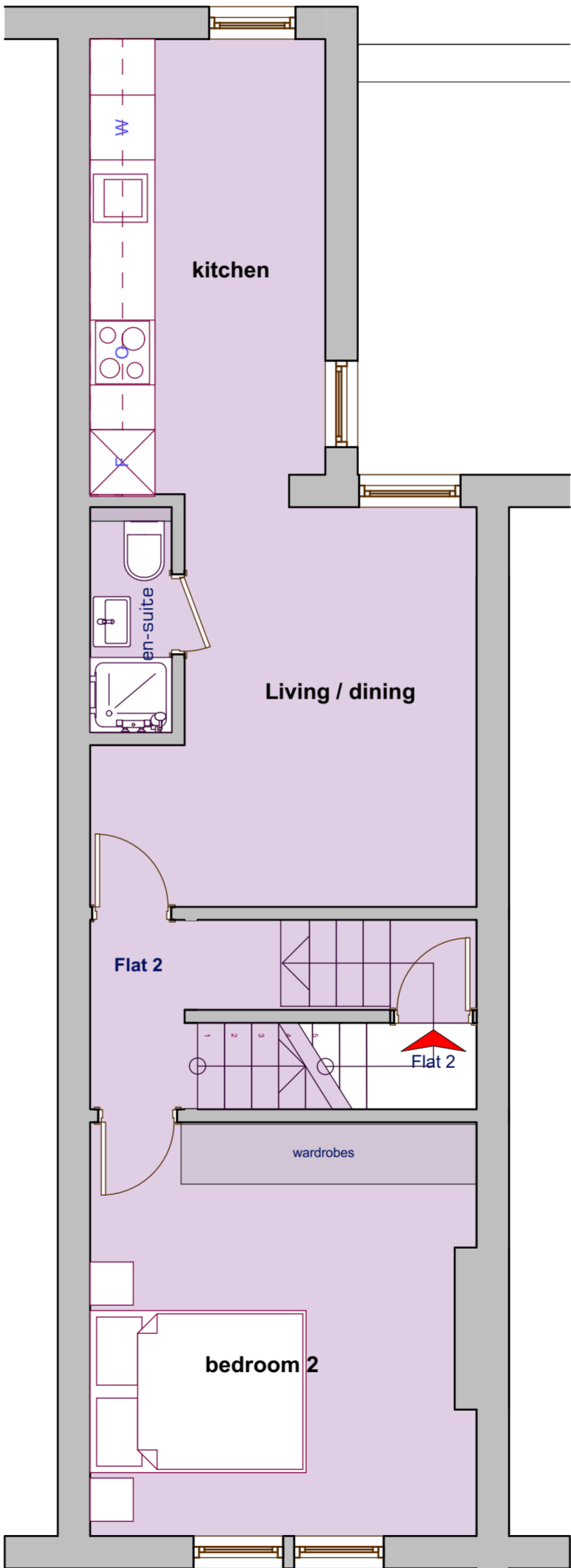
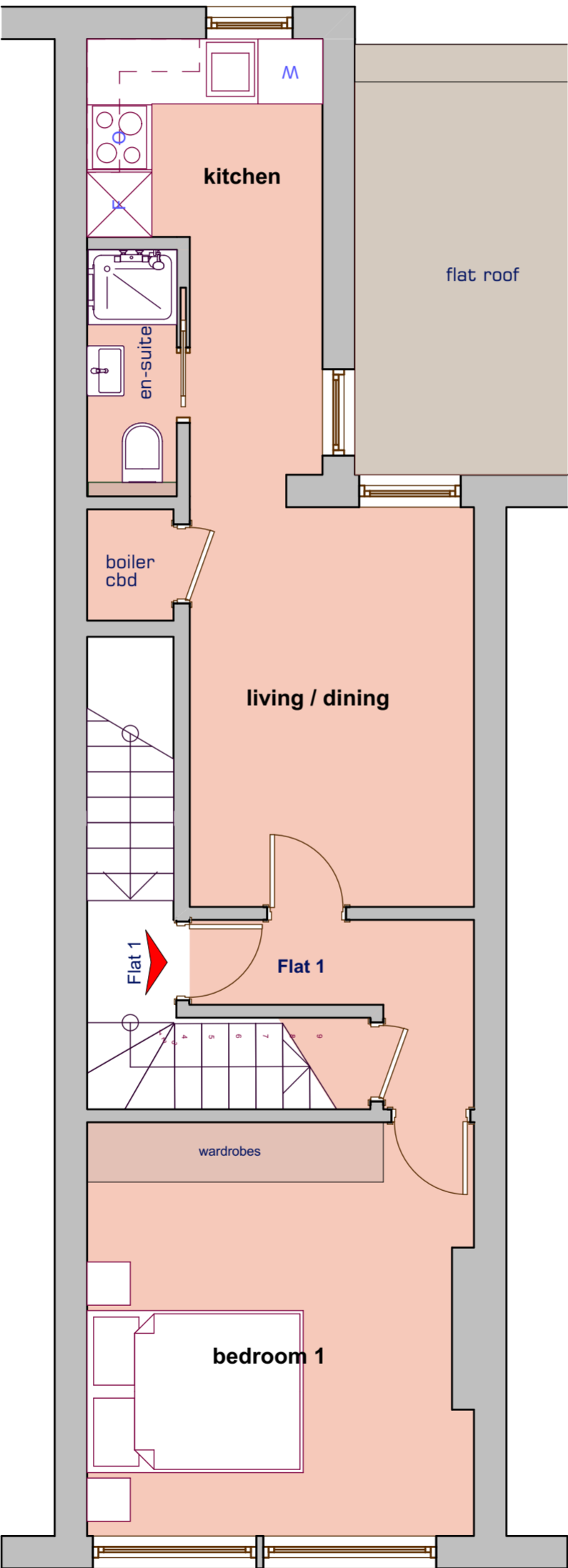


| Schedule of areas | | |
|-------------------|--------------|-----------------------|
| | Story | Area |
| Flat 1 | First Floor | 37.95 |
| | | 37.95 m ² |
| Flat 2 | second floor | 42.41 |
| | third floor | 28.54 |
| | | 70.95 m ² |
| | | 108.90 m ² |

| Table 1 - Minimum gross internal floor areas and storage (m ²) | | | | | |
|--|--------------------------------|----------------------|--------------------|--------------------|------------------|
| Number of bedrooms(b) | Number of bed spaces (persons) | 1 storey dwellings | 2 storey dwellings | 3 storey dwellings | Built-in storage |
| 1b | 1p | 39 (37) ² | | | 1.0 |
| | 2p | 50 | 58 | | 1.5 |
| 2b | 3p | 61 | 70 | | |
| | 4p | 70 | 79 | | 2.0 |
| 3b | 4p | 74 | 84 | 90 | |
| | 5p | 86 | 93 | 99 | 2.5 |
| | 6p | 95 | 102 | 108 | |
| 4b | 5p | 90 | 97 | 103 | |
| | 6p | 99 | 106 | 112 | |
| | 7p | 108 | 115 | 121 | 3.0 |
| | 8p | 117 | 124 | 130 | |
| 5b | 6p | 103 | 110 | 116 | |
| | 7p | 112 | 119 | 125 | 3.5 |
| | 8p | 121 | 128 | 134 | |
| 6b | 7p | 116 | 123 | 129 | |
| | 8p | 125 | 132 | 138 | 4.0 |



| RevID | Comment |
|-------|--|
| A | Bedroom & living swapped in flat 2 |
| B | entrance flat 2 and ensuite flat 1 amended |
| C | terrace screening detail added |

| Issued By | Issue Date |
|-----------|------------|
| IDP | 25-09-2019 |
| IDP | 25-10-2019 |
| IDP | 20-1-2020 |

preliminary

