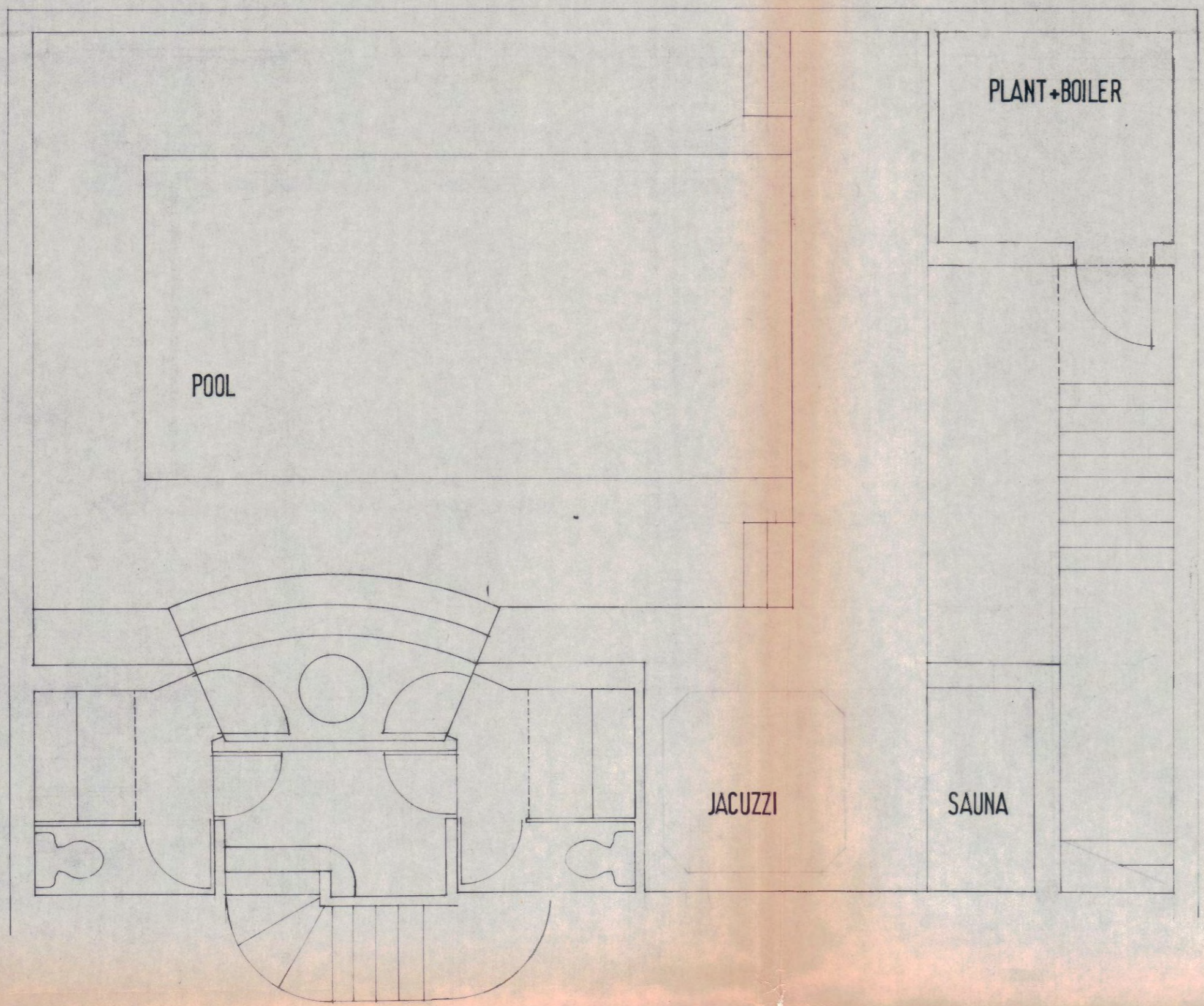
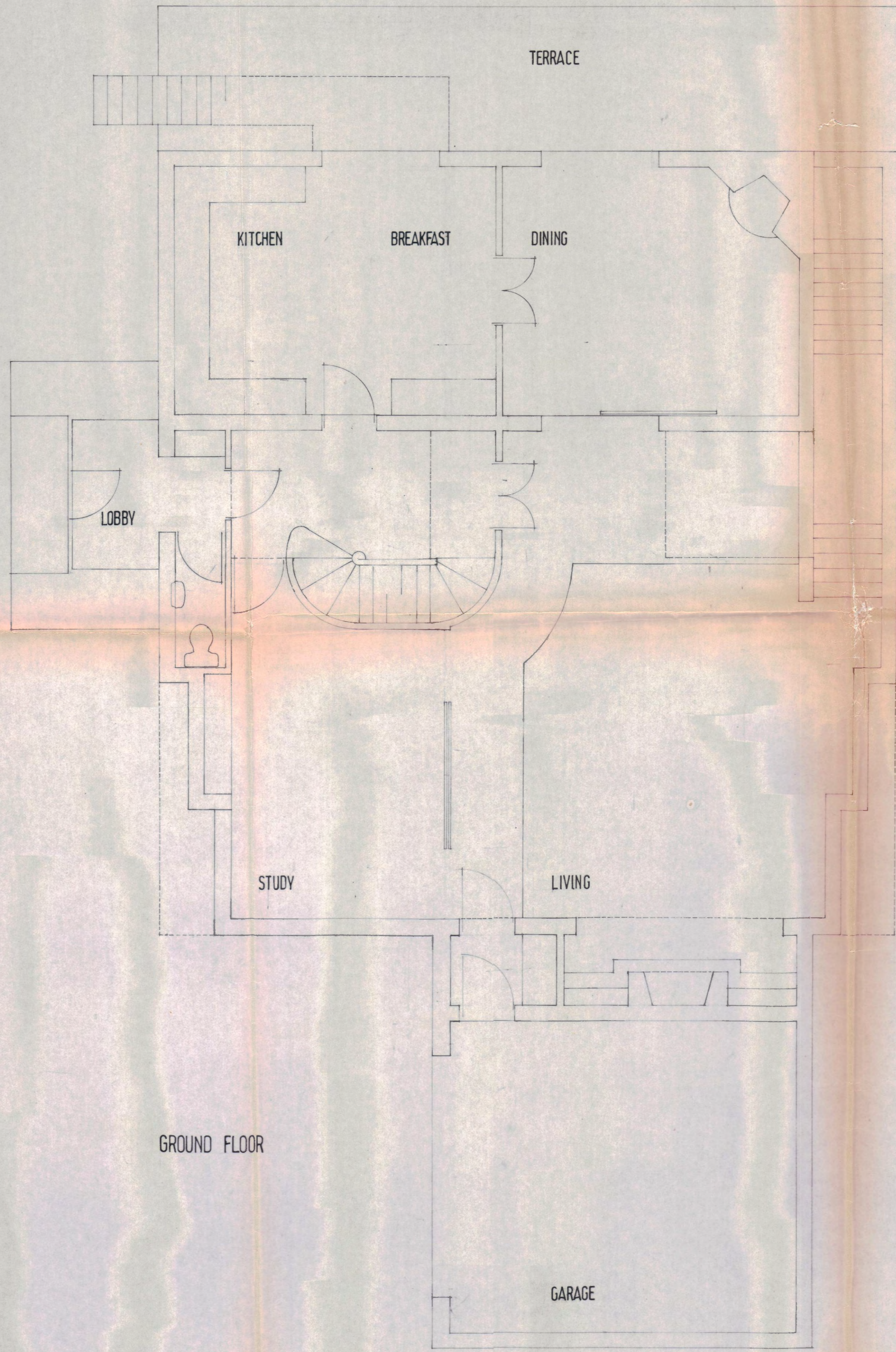


notes

PLANNING AND COMMUNICATIONS
DEPARTMENT
CAMDEN
- 5 JUL 1982
VOL _____
ACK _____
REFERRED TO _____



BASEMENT



GROUND FLOOR

CTP/15/4/A/34486
(R3)

DMS, Architects
SPEDAN TOWER

drawing
PLANS
D+

LONDON BOROUGH OF CAMDEN
TOWN AND COUNTRY PLANNING ACTS
7 SEP 1982
APPROVED
PLANS ON BEHALF OF THE COUNCIL

no.	revision
scale 1:1:50	date 1982

EAS
SP15Y