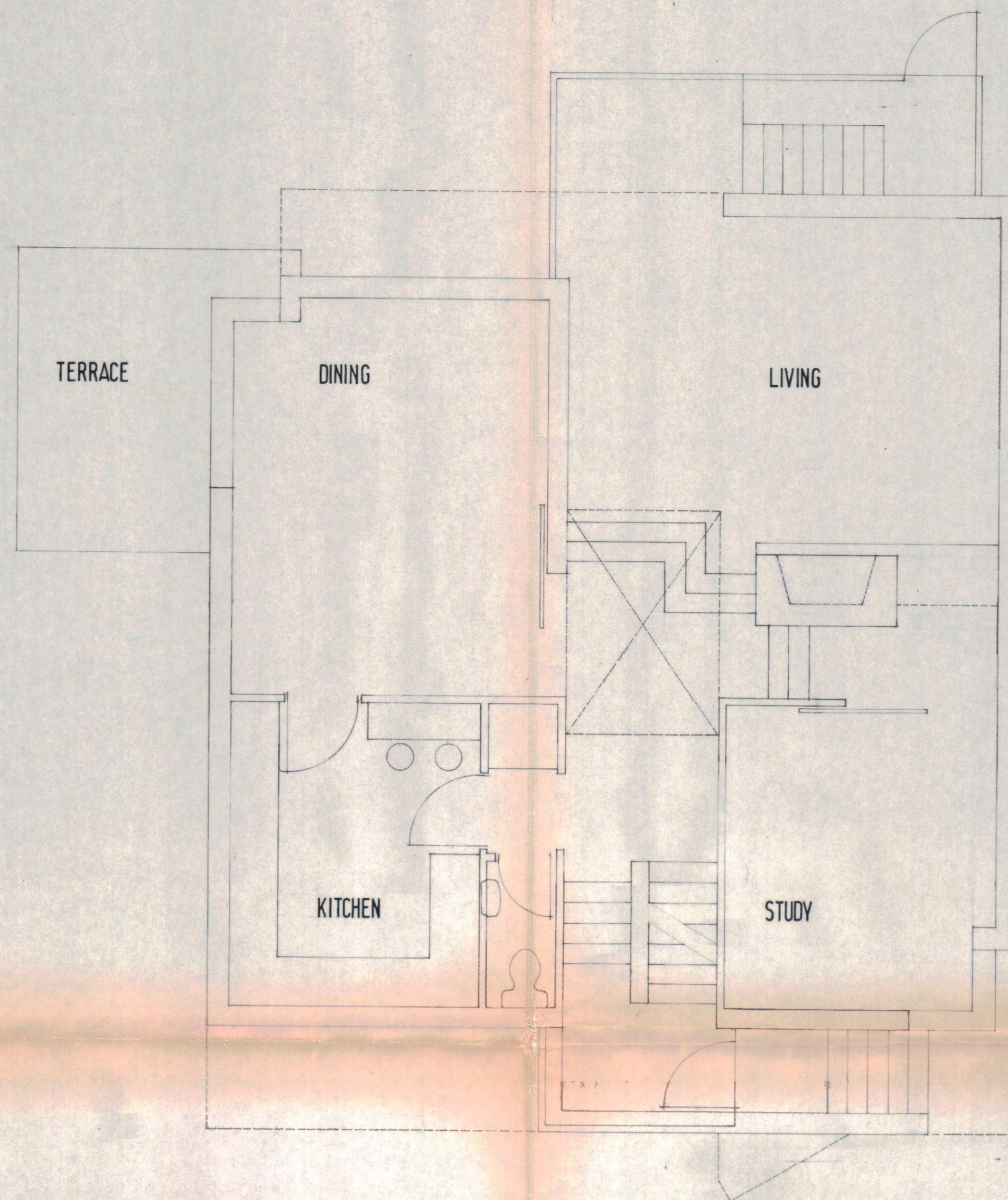
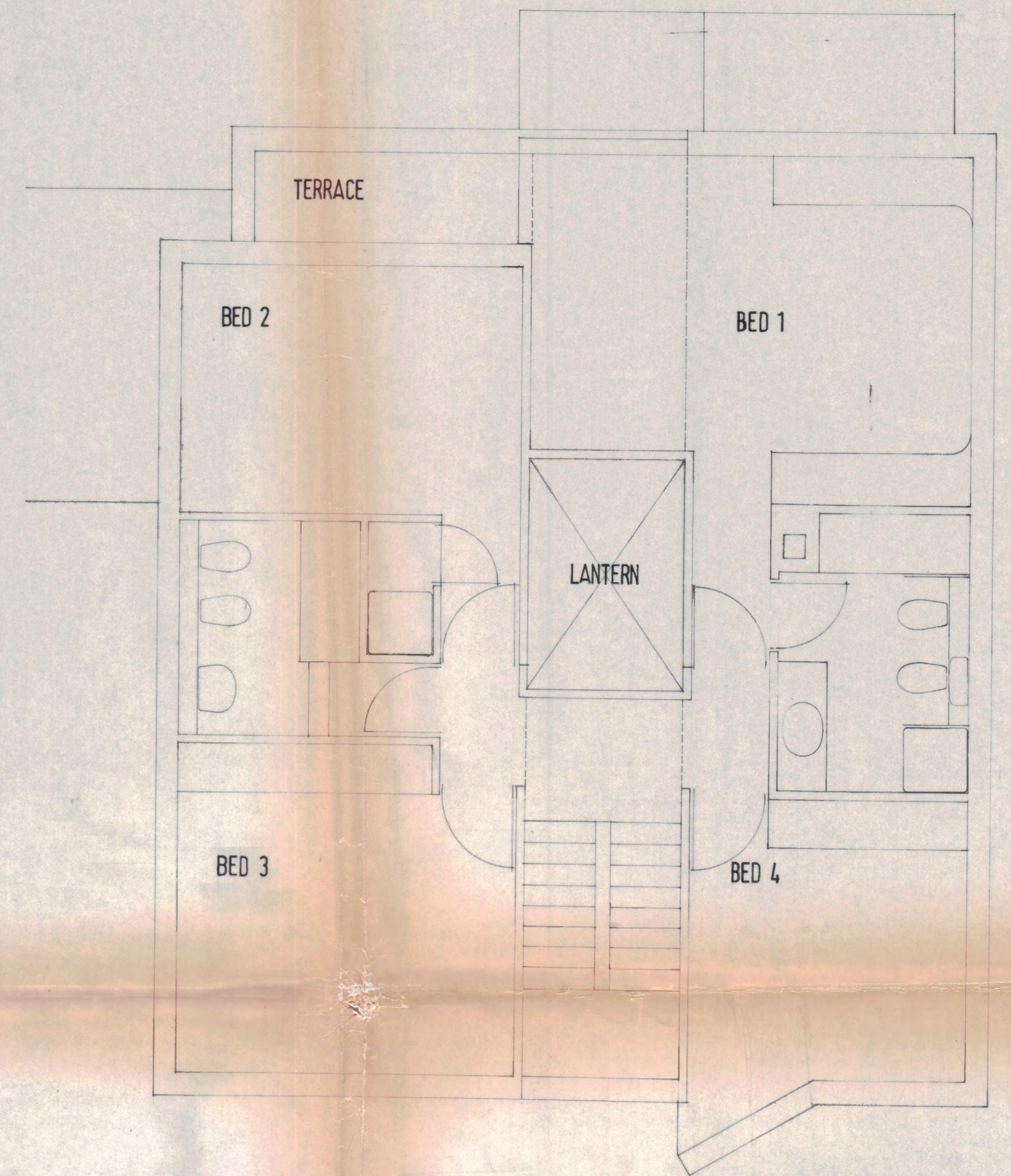


LOWER GROUND FLOOR



GROUND FLOOR



FIRST FLOOR

LONDON BOROUGH OF CAMDEN  
TOWN AND COUNTRY PLANNING ACTS  
7 SEP 1982  
PLANS APPROVED  
ON BEHALF OF THE COUNCIL

CTP/05/4/A/34456.  
(R3)

BAS, Architects  
SPEDAN TOWER

drawing  
~~STAIRS~~  
PLANS  
B1

PLANNING AND COMMUNICATIONS  
DEPARTMENT  
CAMDEN  
- 5 JUL 1982

no.	revision
scale 1:50	date 14th 82

SP 14 Y